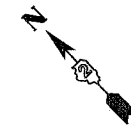


MEIGS CORP.

CONTRACT NO. 64237

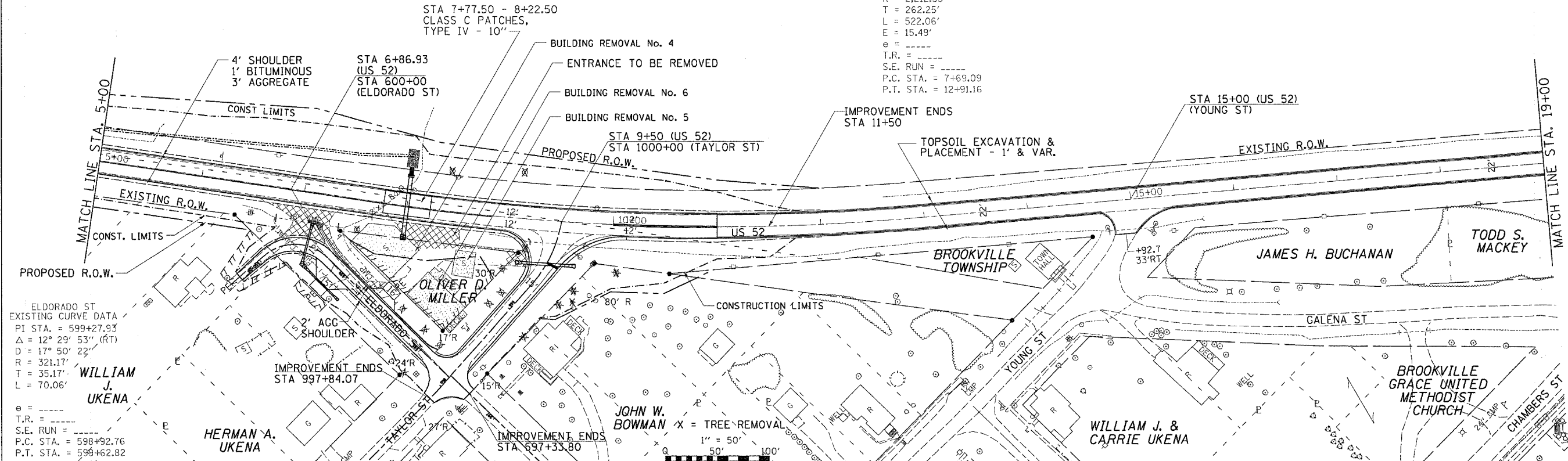
F.A.S. RTE.	SECTION	COUNTY	TOTAL SHEETS	SHEET NO.
2079	**	CARROLL & OGLE	232	47
STA. 5+00		TO STA. 20+50		
FED. ROAD DIST. NO.	ILLINOIS	FED. AID PROJECT		
* (US 52)		** (16, 17, 18) RS-3 & 16BRM-1		

US 52
 EXISTING CURVE DATA
 PI STA. = 10+31.34
 $\Delta = 13^\circ 31' 14''$ (LT)
 $D = 2^\circ 35' 23''$
 $R = 2,212.35'$
 $T = 262.25'$
 $L = 522.06'$
 $E = 15.49'$
 $e = \text{---}$
 $T.R. = \text{---}$
 $S.E. RUN = \text{---}$
 $P.C. STA. = 7+69.09$
 $P.T. STA. = 12+91.16$



PLAN	DATE
REVIEWED	
PLOTTED	
CHECKED	
DATE	

PROFILE	DATE
REVIEWED	
PLOTTED	
CHECKED	
DATE	



DATE-TIME
 DDM-SPEC
 REV
 REF