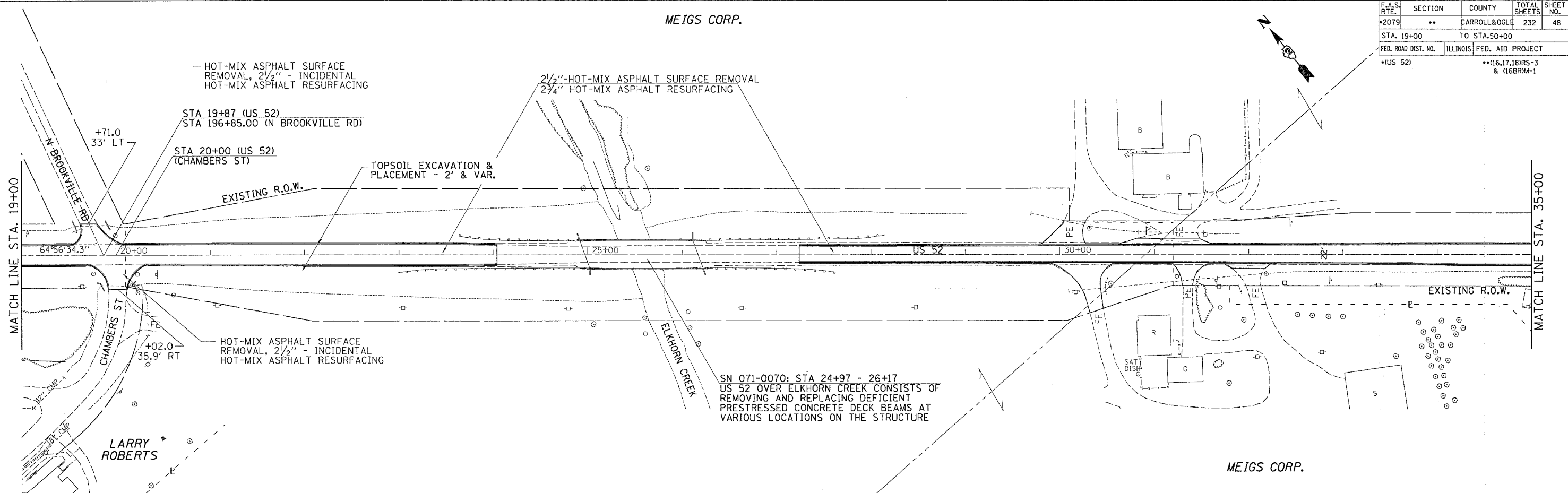


F.A.S. RTE.	SECTION	COUNTY	TOTAL SHEETS	SHEET NO.
2079	**	CARROLL & OGLE	232	48
STA. 19+00		TO STA. 50+00		
FED. ROAD DIST. NO.	ILLINOIS	FED. AID PROJECT		
*US 52		**16.17.18RS-3 & 16BRIM-1		

MEIGS CORP.

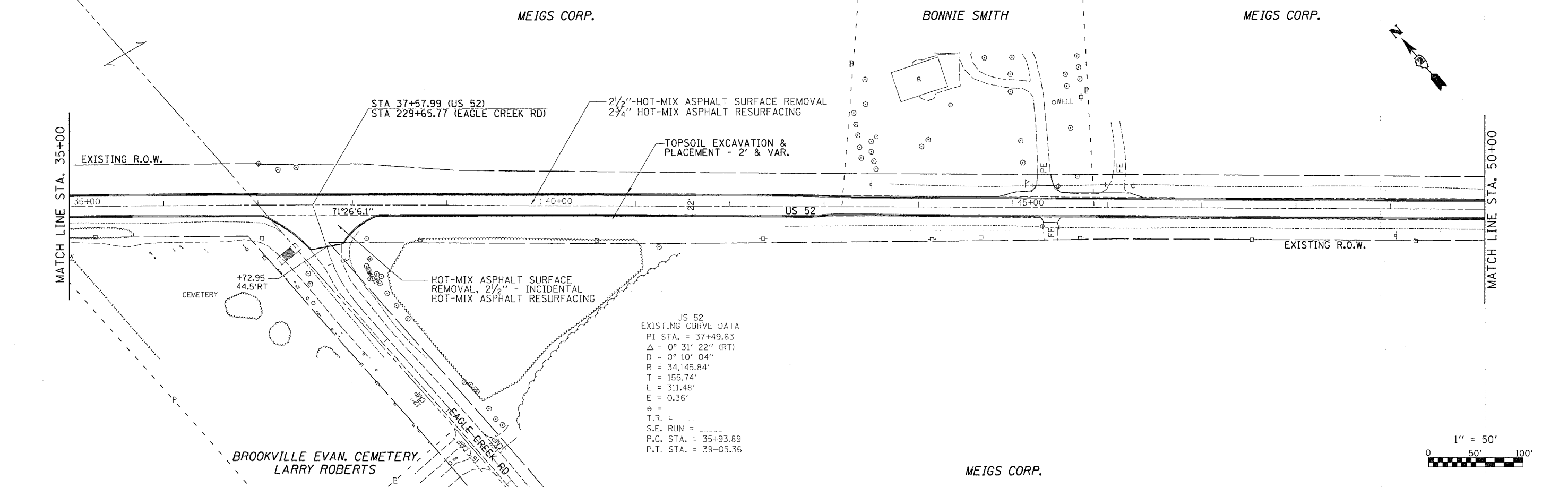


SN 071-0070: STA 24+97 - 26+17
 US 52 OVER ELKHORN CREEK CONSISTS OF
 REMOVING AND REPLACING DEFICIENT
 PRESTRESSED CONCRETE DECK BEAMS AT
 VARIOUS LOCATIONS ON THE STRUCTURE

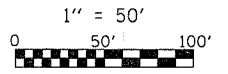
MEIGS CORP.

BONNIE SMITH

MEIGS CORP.



US 52
 EXISTING CURVE DATA
 P.I. STA. = 37+49.63
 Δ = 0° 31' 22" (RT)
 D = 0° 10' 04"
 R = 34,145.84'
 T = 155.74'
 L = 311.48'
 E = 0.36'
 e =
 T.R. =
 S.E. RUN =
 P.C. STA. = 35+93.89
 P.T. STA. = 39+05.36



PLOT DATE = Thu Mar 08 06:32:44 2007
 FILE NAME = c:\projects\222265\us22265\us22265.plt.dgn
 USER NAME = jg
 USER = jg