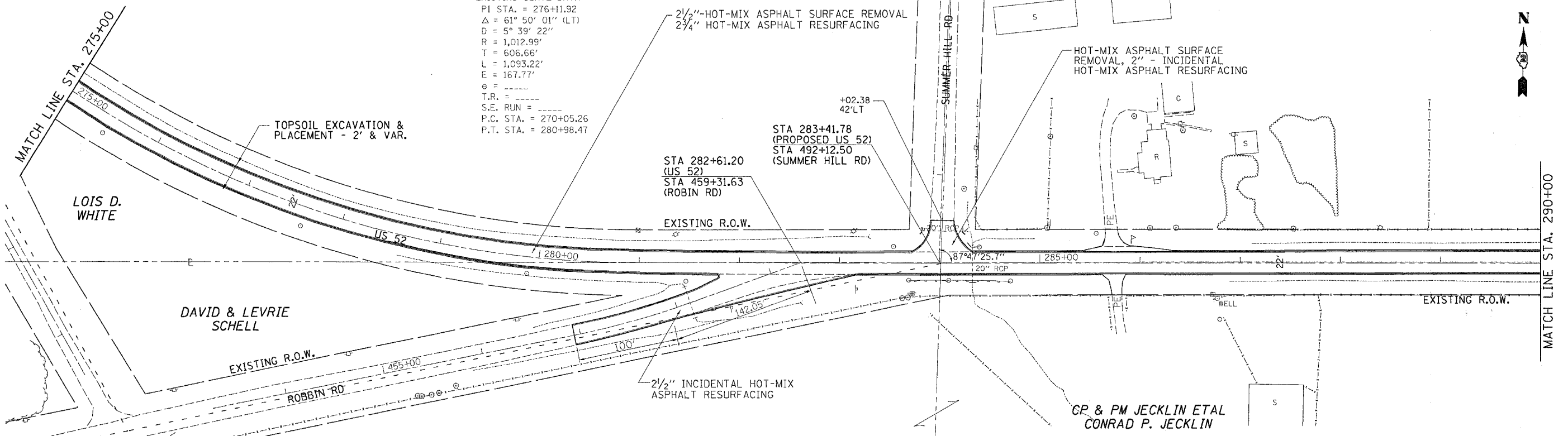


F.A.S. RTE.	SECTION	COUNTY	TOTAL SHEETS	SHEET NO.
*2079	**	CARROLL & OGLE	232	58
STA. 275+00		TO STA. 305+00		
FED. ROAD DIST. NO.	ILLINOIS	FED. AID PROJECT		
* (US 52)		** (16,17,18) RS-3 & (16) RM-1		

LOIS D. WHITE

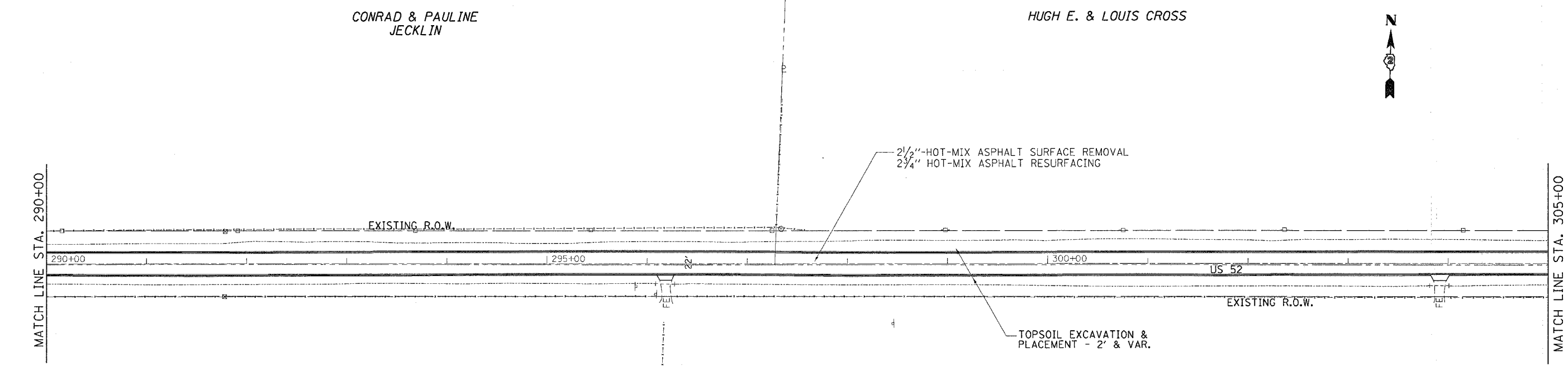
CONRAD & PAULINE JECKLIN

US 52  
 EXISTING CURVE DATA  
 PI STA. = 276+11.92  
 $\Delta = 61^\circ 50' 01''$  (LT)  
 $D = 5^\circ 39' 22''$   
 $R = 1,012.99'$   
 $T = 606.66'$   
 $L = 1,093.22'$   
 $E = 167.77'$   
 $\theta =$   
 $T.R. =$   
 $S.E. RUN =$   
 $P.C. STA. = 270+05.26$   
 $P.T. STA. = 280+98.47$

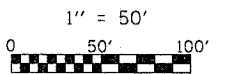


CONRAD & PAULINE JECKLIN

HUGH E. & LOUIS CROSS



CP & PM JECKLIN ETAL  
 CONRAD JECKLIN



PLOT DATE: Thu Nov 28 06:52:59 2007  
 FILE NAME: c:\projects\2079\2079.dwg  
 PLOT SCALE: 1/8" = 1' IN.  
 USER NAME: dssad