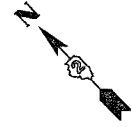


| F.A.S. RTE. | SECTION | COUNTY | TOTAL SHEETS | SHEET NO. |
|---------------------|---------|---------------------------|--------------|-----------|
| 2079 | ** | CARROLL & OGLE | 232 | 78 |
| STA. 5+00 | | TO STA. 20+50 | | |
| FED. ROAD DIST. NO. | | ILLINOIS FED. AID PROJECT | | |
| *(US 52) | | **16,17,18BRS-3 & 16BRM-1 | | |

MEIGS CORP.

| | | | | |
|---|-----------|-----------|-----------|------------|
| Drainage Area = | 21.10 | acres | | |
| Existing Low Grade Elevation: | 788.78 | ft. @ | 8+00 | |
| Proposed Low Grade Elevation: | 789.07 | ft. @ | 8+00 | |
| Flood | Frequency | Discharge | Headwater | Elev. (ft) |
| | Year | cfs | Existing | Proposed |
| Ten-Year | 10 | 37 | 788.12 | 786.60 |
| Design | 50 | 51 | 790.14 | 786.83 |
| Base | 100 | 59 | 791.64 | 786.95 |
| EX Overtopping | 7 | 34 | 788.78 | |
| Max Calc | 500 | 82 | | 787.27 |
| 10-Year Velocity through Existing Culvert = | | 8.2 | fps | |
| 10-Year Velocity through Proposed Culvert = | | 7.1 | fps | |



STA 7+81
REMOVAL OF EXISTING STRUCTURES No. 3
(SEE SPECIAL PROVISIONS)

STA 599+75
REMOVAL OF EXISTING STRUCTURES No. 8
(SEE SPECIAL PROVISIONS)

STONE RIPRAP, CLASS A4

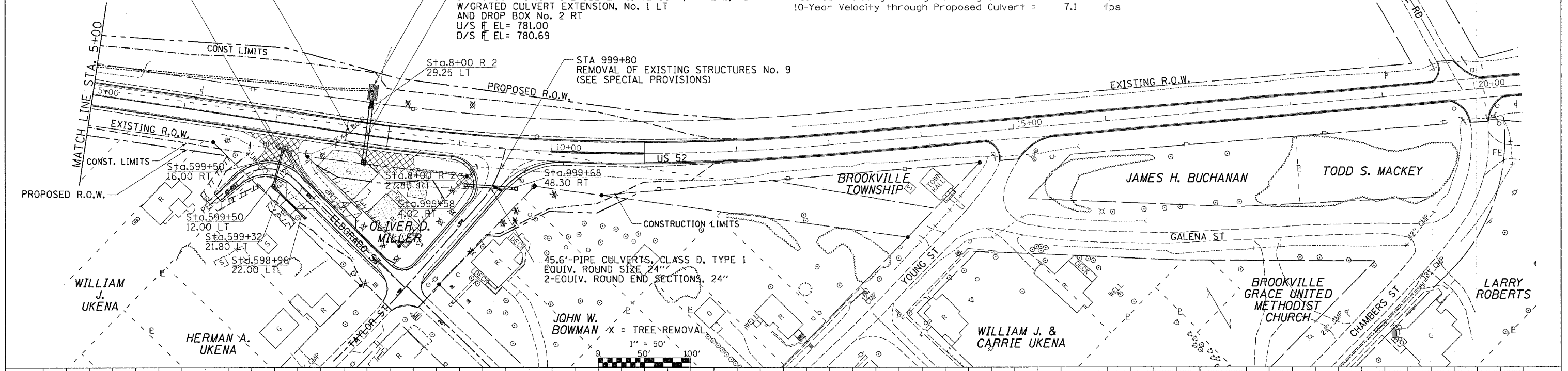
STA 8+00 - 57.5' PIPE CULVERTS, CLASS A, TYPE 2, 42"
W/ GRATED CULVERT EXTENSION, No. 1 LT
AND DROP BOX No. 2 RT
U/S F EL= 781.00
D/S F EL= 780.69

STA 999+80
REMOVAL OF EXISTING STRUCTURES No. 9
(SEE SPECIAL PROVISIONS)

Sta. 8+00 R 2
29.25 LT

PROPOSED R.O.W.

EXISTING R.O.W.



| PLAN | DATE | BY |
|----------|------|----|
| REVISION | | |
| DATE | | |
| BY | | |
| DATE | | |
| BY | | |
| DATE | | |
| BY | | |
| DATE | | |

| PROFILE | DATE | BY |
|----------|------|----|
| REVISION | | |
| DATE | | |
| BY | | |
| DATE | | |
| BY | | |
| DATE | | |
| BY | | |
| DATE | | |

