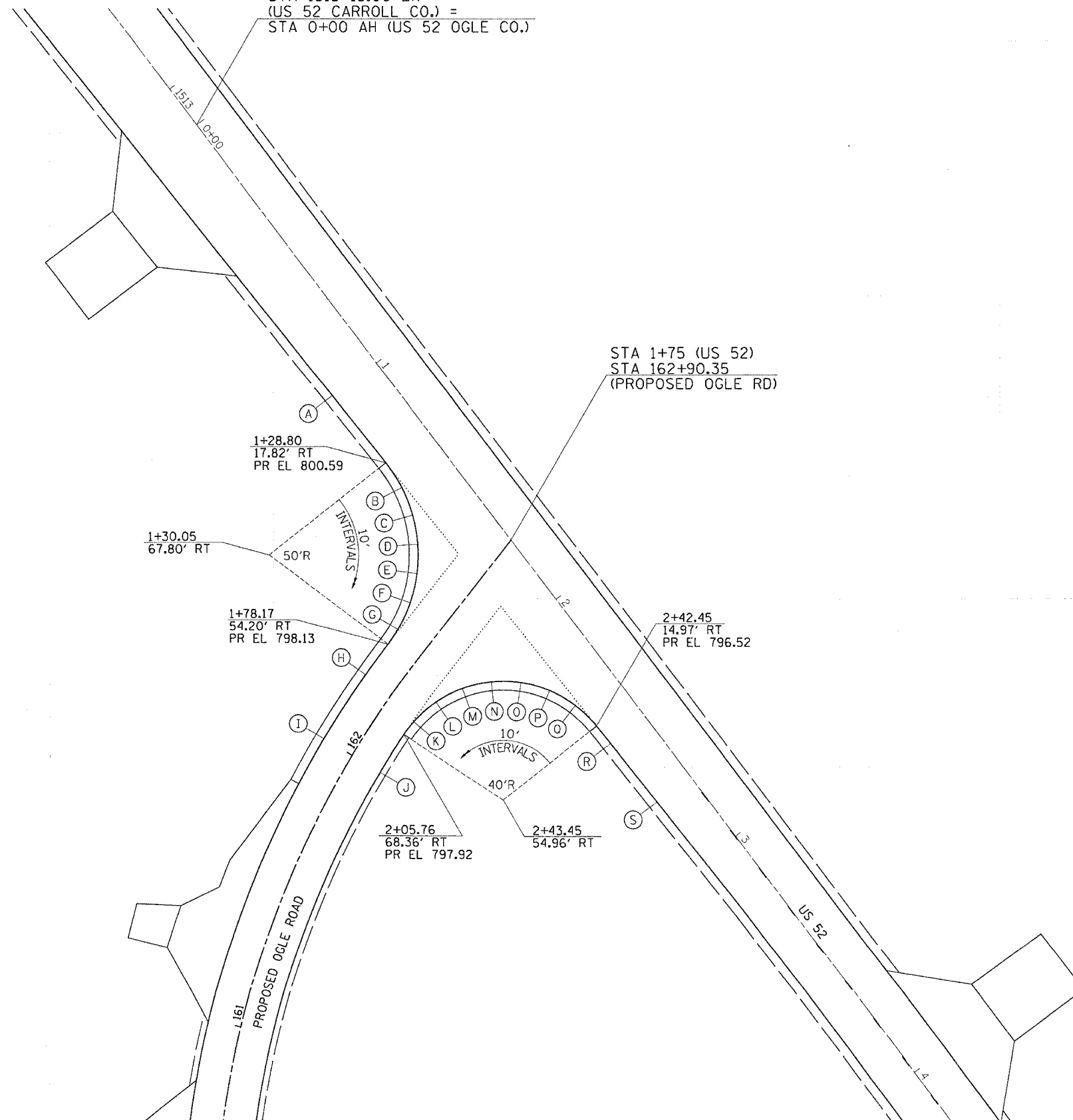


F.A.S. RTE.	SECTION	COUNTY	TOTAL SHEETS	SHEET NO.
2079	**	CARROLL & OGLE	232	82
STA.		TO STA.		
FED. ROAD DIST. NO.		ILLINOIS FED. AID PROJECT		
*US 52)		** (16,17,18)RS-3 & (16BR)M-1		



PAVEMENT ELEVATION DETAILS PROPOSED OGLE ROAD

COUNTY LINE EQUATION
STA 1513+15.00 BK
(US 52 CARROLL CO.) =
STA 0+00 AH (US 52 OGLE CO.)



	STATION US 52	OFFSET US 52	PROPOSED EDGE OF PAVEMENT ELEVATION
A	1+00.00	18.54' RT	801.71
B	1+38.76	18.56' RT	800.16
C	1+48.37	21.27' RT	799.60
D	1+57.24	25.84' RT	798.85
E	1+65.04	32.08' RT	798.09
F	1+71.44	39.74' RT	798.18
G	1+76.19	48.52' RT	798.17
	STATION PROPOSED OGLE ROAD	OFFSET PROPOSED OGLE ROAD	PROPOSED EDGE OF PAVEMENT ELEVATION
H	162+25.00	11.00' LT	798.01
I	162+00.00	11.00' LT	797.79
J	162+00.00	11.00' RT	797.79
	STATION US 52	OFFSET US 52	PROPOSED EDGE OF PAVEMENT ELEVATION
K	2+04.28	63.07' RT	797.97
L	2+03.49	53.13' RT	797.98
M	2+05.18	43.30' RT	797.89
N	2+09.26	34.20' RT	797.61
O	2+15.46	26.38' RT	797.17
P	2+23.40	20.35' RT	797.02
Q	2+32.58	16.46' RT	796.81
R	2+50.00	14.78' RT	796.27
S	2+75.00	14.16' RT	795.52

PLOT DATE = Wed Mar 07 15:37:18 2007
FILE NAME = c:\pcc\mca\202285\622851lev.dgn
PLOT SCALE = 20,0000 / 1 IN.
USER NAME = dssidd

REVISIONS	
NAME	DATE

ILLINOIS DEPARTMENT OF TRANSPORTATION

FAS ROUTE 2079 (US 52)
SECTION (16,17,18)RS-3
CARROLL & OGLE COUNTIES

SCALE: VERT. DATE
HORIZ. DATE

DRAWN BY
CHECKED BY