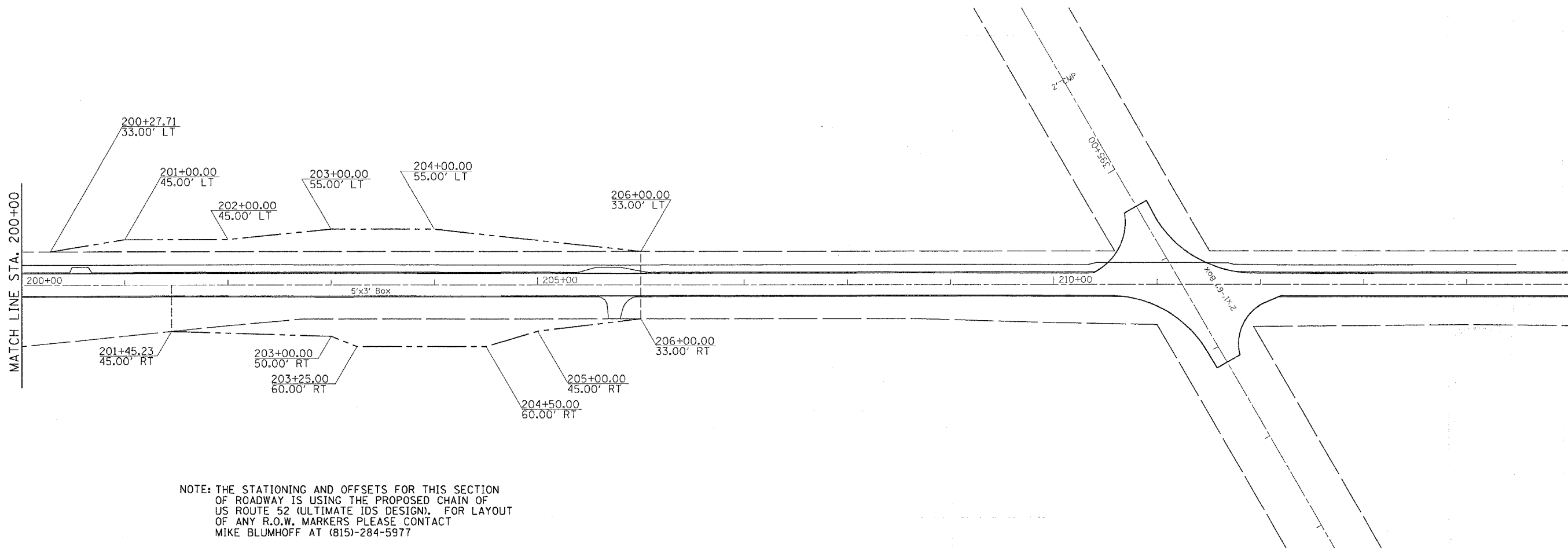


R.O.W. & EASEMENT DETAILS

CONTRACT NO. 64237

F.A.S. RTE.	SECTION	COUNTY	TOTAL SHEETS	SHEET NO.
2079	**	CARROLL & OGLE	232	90
STA.		TO STA.		
FED. ROAD DIST. NO.		ILLINOIS	FED. AID PROJECT	
(US 52)		** (16,17,18)RS-3 & (16BR)M-1		



NOTE: THE STATIONING AND OFFSETS FOR THIS SECTION OF ROADWAY IS USING THE PROPOSED CHAIN OF US ROUTE 52 (ULTIMATE IDS DESIGN). FOR LAYOUT OF ANY R.O.W. MARKERS PLEASE CONTACT MIKE BLUMHOFF AT (815)-284-5977

PLOT DATE = Wed Mar 07 15:05:58 2007
 FILE NAME = S:\2007\12282655\12282655.dwg
 PLOT SCALE = 50.0000' / IN.
 USER NAME = dssdd

REVISIONS	
NAME	DATE

ILLINOIS DEPARTMENT OF TRANSPORTATION
FAS ROUTE 2079 (US 52)
SECTION (16, 17, 18)RS-3
CARROLL & OGLE COUNTIES
 SCALE: VERT. DRAWN BY
 HORIZ. CHECKED BY
 DATE

R.O.W. & EASEMENT DETAILS