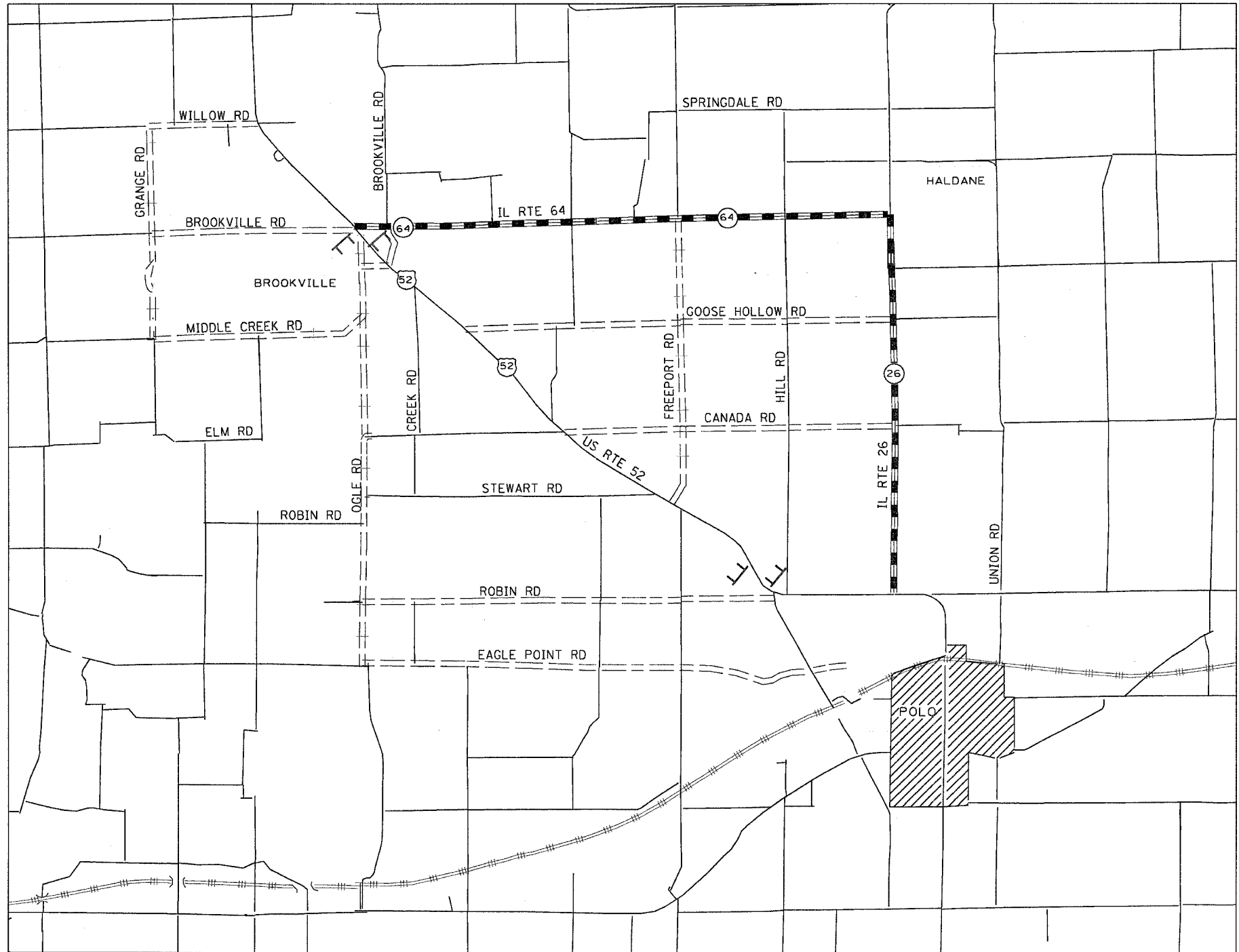
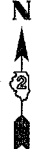


DETOUR ROUTE

CLOSURE 1 ON US RTE 52
DETOUR ON IL RTE 64 AND IL RTE 26 FOR 9 MILES

F.A.S. RTE.	SECTION	COUNTY	TOTAL SHEETS	SHEET NO.
*2079	**	CARROLL & OGLE	232	115
STA.		TO STA.		
FED. ROAD DIST. NO.		ILLINOIS FED. AID PROJECT		
*(US 52)		**(16,17,18)RS-3 & (16BR)M-1		



LEGEND

- TYPE III BARRICADE W/STEADY BURNING MONODIRECTIONAL LIGHTS
- DETOUR ROUTE
- GOOD NEIGHBOR ROUTE

0 50' 100'

REVISIONS	
NAME	DATE

ILLINOIS DEPARTMENT OF TRANSPORTATION
FAS ROUTE 2079 (US 52)
SECTION (16,17,18)RS-3 & (16BR)M-1
CARROLL & OGLE COUNTIES

SCALE: VERT. _____
HORIZ. _____
DATE _____ DRAWN BY _____
CHECKED BY _____

PLOT DATE = Wed Mar 07 14:24:32 2007
FILE NAME = I:\Users\j2822885\OneDrive\115.dgn
PLOT SCALE = 1/4" = 100'
USER NAME = j2822885