

F.A.S. RTE.	SECTION	COUNTY	TOTAL SHEETS	SHEET NO.
*2079	**	CARROLL & OGLE	232	123
STA.		TO STA.		
FED. ROAD DIST. NO.		ILLINOIS FED. AID PROJECT		
*(US 52)		**(16,17,18)RS-3 & (16BR)M-1		

DROP BOX NO. 3

RT STA 178 + 82 (US 52)

BILL OF MATERIALS (FOR REINFORCEMENT)

BAR	SIZE	NO.	LENGTH	WEIGHT (LB)
a	#5	28	14'-10"	433.2
b	#7	42	5'-0"	429.2
h	#6	16	5'-0"	120.2
h ₃	#6	6	1'-2"	10.5
h ₄	#6	4	14'-10"	89.1
L	#5	22	5'-6"	126.2
L ₁	#5	4	6'-1"	25.4
L ₂	#5	10	6'-8"	69.5
s	#4	16	3'-3"	34.7
v ₁	#5	12	2'-8"	33.4
v ₂	#5	2	2'-4"	4.9
v ₃	#5	2	2'-1"	4.3
v ₄	#5	2	1'-10"	3.8

DESCRIPTION	UNIT	QTY.
CLASS "SI" CONCRETE	CU YD	5.9
REINFORCEMENT BARS	LB	1,384.4
3" GALVANIZED STEEL PIPE	FOOT	2 @ 15'-5"
3" GALV PIPE CAPS	EACH	6 @ 4'-10"
1/4" GALV. STEEL PLATE (9" NOMINAL)	EACH	10
1/2" x 4" x 14" GALV. STEEL PLATE	EACH	10
5/8" x 9" GALV. STEEL BOLTS	EACH	12
EXPANSION BOLTS 1/2"Ø	EACH	20

GENERAL NOTES:

THIS WORK SHALL BE PAID FOR AT THE CONTRACT UNIT PRICE PER EACH FOR DROP BOX NO. 3.

SLOPE FLOW LINE FOR DROP BOX NO. 3 IS THE SAME RATE AS THE FLOW LINE OF THE PIPE.

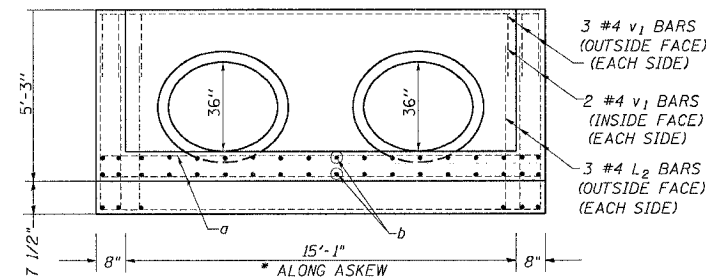
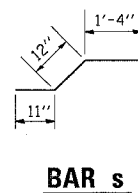
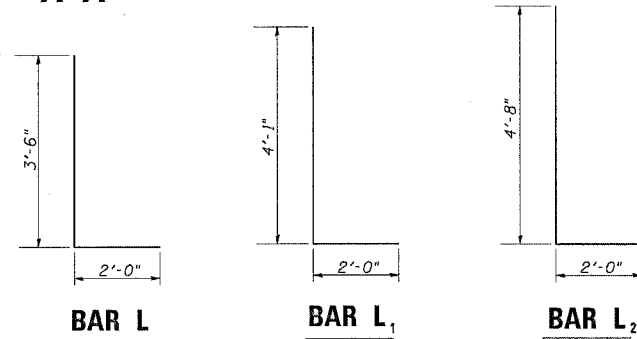
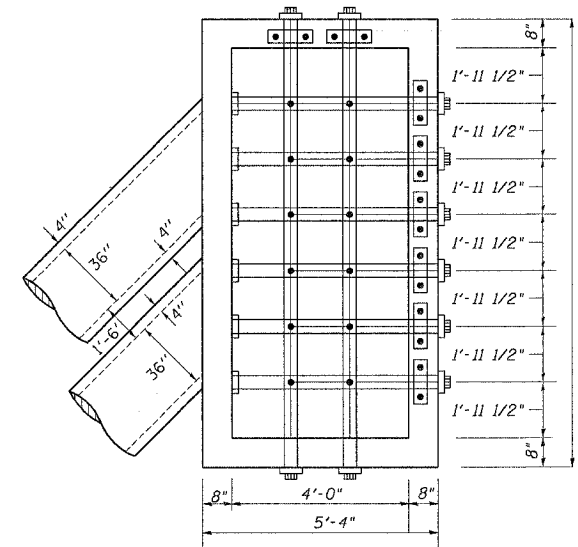
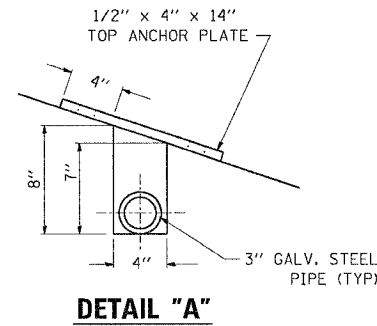
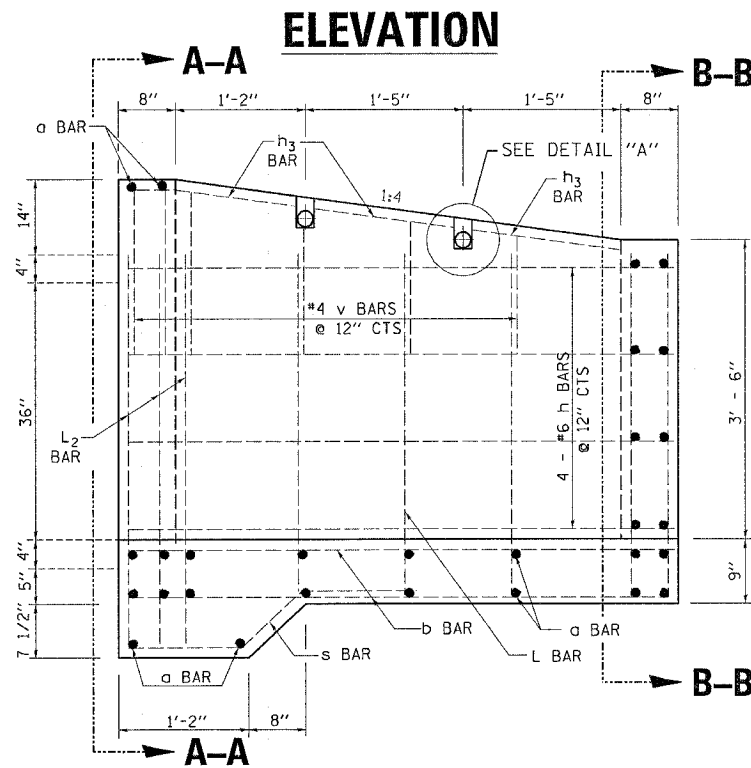
BOLTS, NUTS, AND WASHERS SHALL BE IN ACCORDANCE WITH ARTICLE 1006.08 OF THE STANDARD SPECIFICATION AND SHALL BE GALVANIZED.

STEEL PIPES SHALL CONFORM TO A.S.T.M. A-53 (TYPE E OR S) GRADE B, SCHEDULE 40, AND SHALL BE GALVANIZED CONFORMING TO A.S.T.M. A-120. CONTRACTOR SHALL FIELD VERIFY PIPE LENGTH.

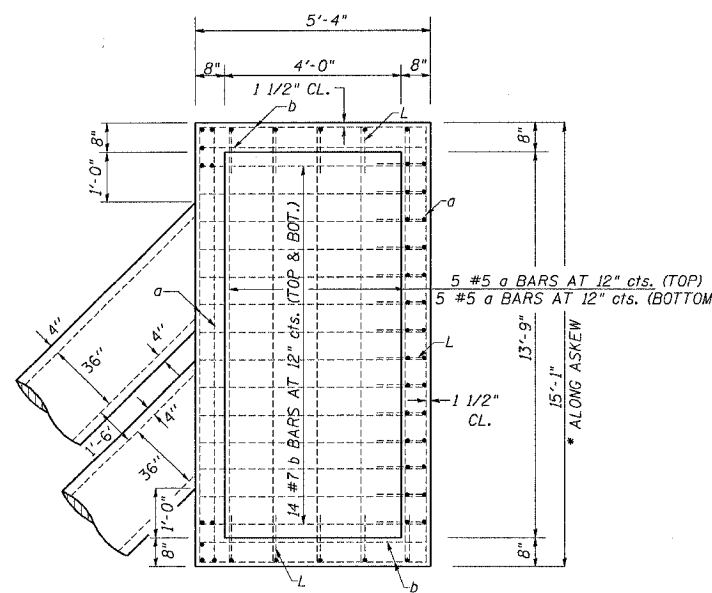
STEEL PLATES SHALL CONFORM TO AASHTO M-183 AND SHALL BE GALVANIZED CONFORMING TO AASHTO M-111.

REINFORCEMENT BARS SHALL CONFORM TO THE REQUIREMENTS OF AASHTO M 31 OR M 322, GRADE 40 OR 60.

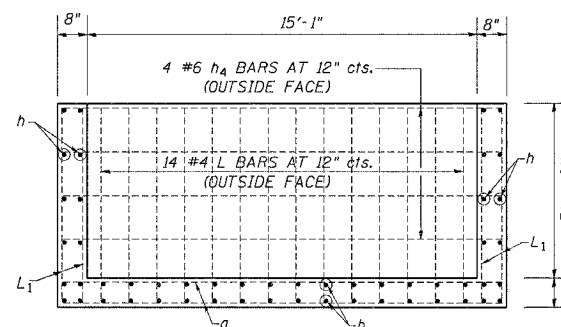
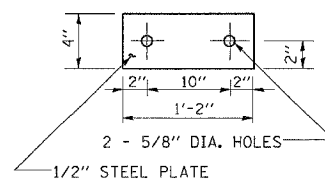
SEE PLAN AND PROFILE SHEET FOR MORE INFORMATION. SEE CROSS SECTION SHEET FOR MORE INFORMATION.



SECTION A-A



TOP ANCHOR PLATE



SECTION B-B

PLOT DATE = Wed Mar 87 13:51:28 2887
 FILE NAME = c:\pcc\jars\c282855\d282855p1.dgn
 PLOT NO. = 7 / 31
 USER NAME = drcadd