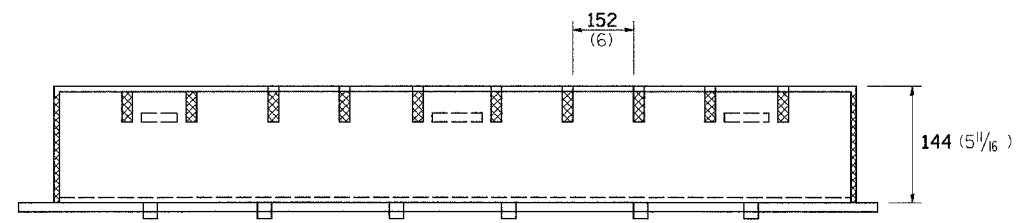
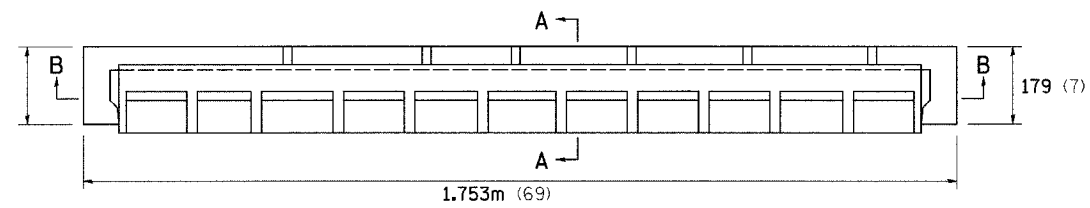
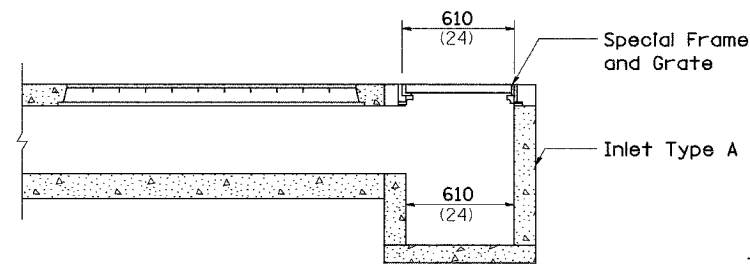


F.A.P. RTE.	SECTION	COUNTY	TOTAL SHEETS	SHEET NO.
*595	5HBR	ROCK ISLAND	139	107
STA.		TO STA.		
FED. ROAD DIST. NO.		ILLINOIS	FED. AID PROJECT	
*IL 5/IL 92				

DETAIL OF SLOTTED VANE DRAIN 305 (12) WITH 152 (6) SLOT

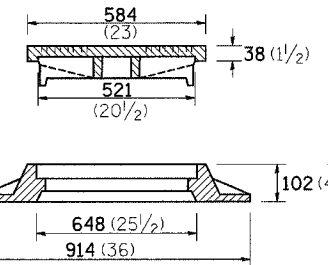
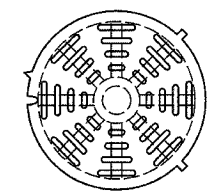


SECTION B-B

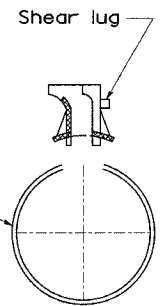


SIDE VIEW

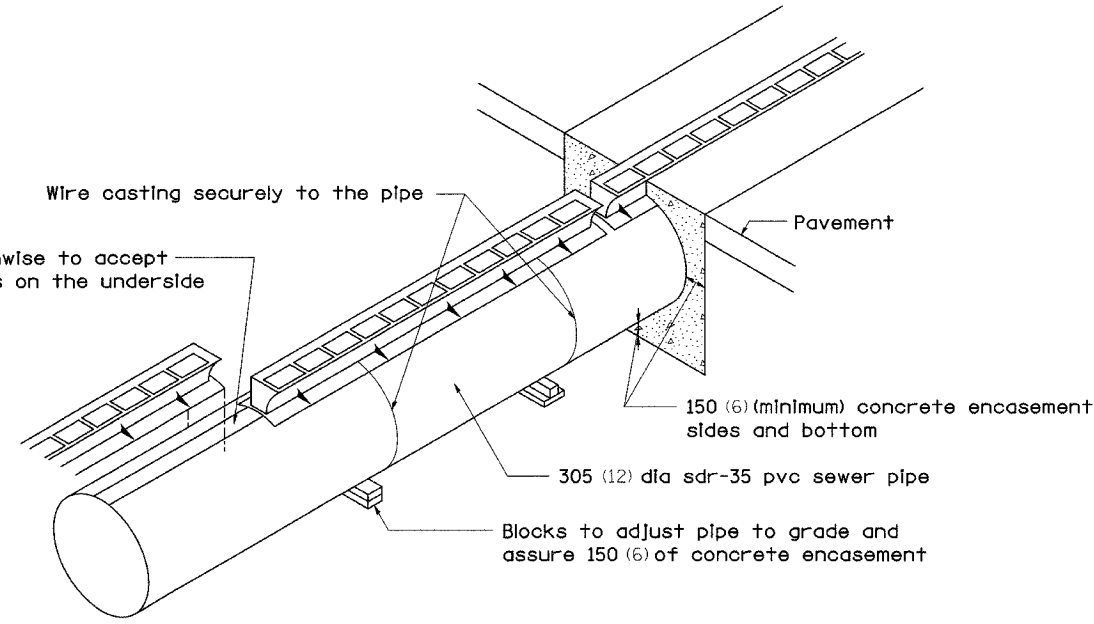
SPECIAL FRAME AND GRATE



Total Weight 129 Kg. (285 Lbs.)



SECTION A-A



GENERAL NOTES:

- Class SI concrete shall be used throughout.
- The contract unit price per foot for SLOTTED DRAIN 300 (12) w/150 (6) SLOT shall include the grate, class SI concrete, sdr-35 pvc 300(12) sewer pipe, blocks, wire and excavation.
- The Inlet TYPE A to be in accordance with Standard 602301.
- The contract unit price each for INLETS, TYPE A, WITH SPECIAL FRAME, OPEN LID shall include a Type A Inlet and the special frame and grate detailed above.
- ALL DIMENSIONS ARE IN MILLIMETERS (INCHES) UNLESS OTHERWISE NOTED.

PLOT DATE = Wed Aug 22 13:42:52 2007
 FILE NAME = c:\p\projects\20080203\dr0203.dwg
 PLOTTER = HPGL
 PLOT SCALE = 1:1
 PLOT REFERENCE = 0