

F.A.P. RTE.	SECTION	COUNTY	TOTAL SHEETS	SHEET NO.
553	120T-2	OGLE	59	1

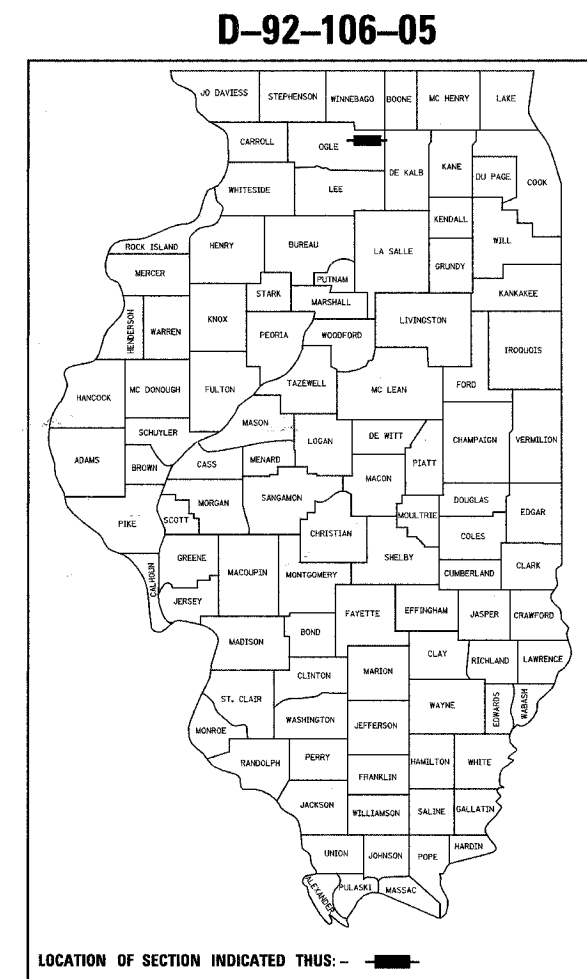
STATE OF ILLINOIS  
DEPARTMENT OF TRANSPORTATION  
DIVISION OF HIGHWAYS

# PROPOSED HIGHWAY PLANS

FAP ROUTE 553 (IL 72)  
SECTION 120T-2  
PROJECT ACF-0553(150)  
OGLE COUNTY  
C-92-008-07



FOR INDEX OF SHEETS, SEE SHEET NO. 2  
FOR STATE STANDARDS, SEE SHEET NO. 2



LOCATION OF SECTION INDICATED THUS: - [shaded rectangle] -

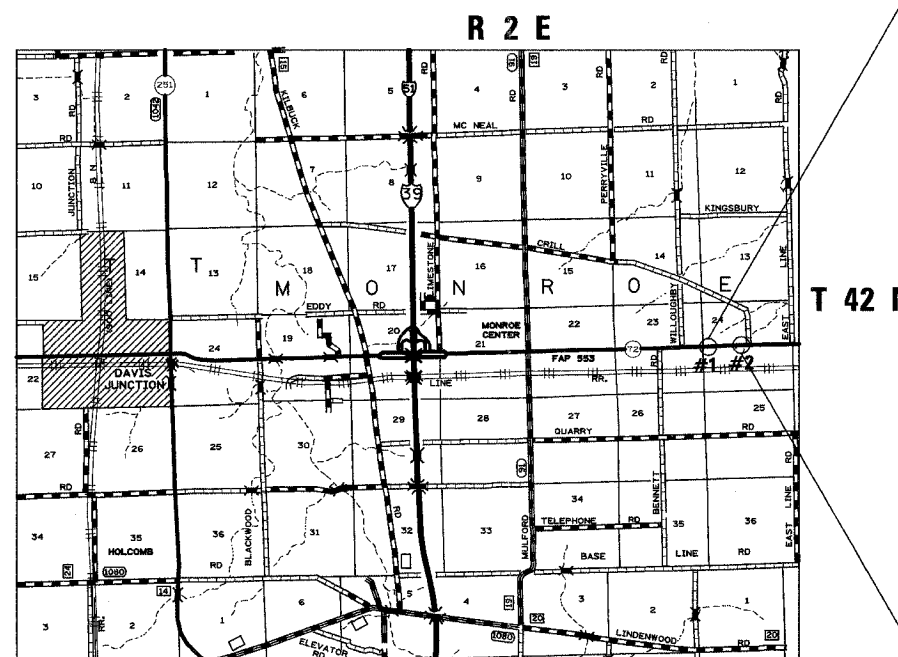
PROJECT ENGINEER: MASOOD AHMAD  
SENIOR SQUAD LEADER: SAM ABDULLAH (815) 284-5935  
STUDIES & PLANS SQUAD ENGINEER: COREY CONDERMAN (815) 284-5936

EXISTING S.N. 071-1141  
PROPOSED S.N. 071-1160  
STA 2109 + 85  
REMOVE EXISTING 6'X5.5' BOX CULVERT  
AND CONSTRUCT 2 CELL 6'X5' BOX  
CULVERT AT 27° SKEW WITH NEW  
STA 2109 + 64.78

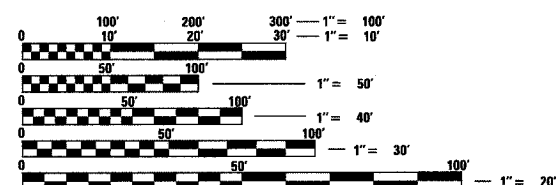
SECTION & IMPROVEMENT BEGINS  
STA 2106 + 80  
SECTION ENDS  
STA 2112 + 20

EXISTING S.N. 071-1140  
PROPOSED S.N. 071-1161  
STA 2131 + 99  
REMOVE EXISTING 6'X4' BOX CULVERT  
AND CONSTRUCT 2 CELL 6'X3' BOX  
CULVERT AT 45° SKEW WITH NEW  
STA 2131 + 60

SECTION BEGINS  
STA 2128 + 80  
SECTION & IMPROVEMENT ENDS  
STA 2134 + 20



MONROE TOWNSHIP, SECTION 24



FULL SIZE PLANS HAVE BEEN PREPARED USING STANDARD  
ENGINEERING SCALES. REDUCED SIZED PLANS WILL NOT  
CONFORM TO STANDARD SCALES. IN MAKING MEASUREMENTS  
ON REDUCED PLANS, THE ABOVE SCALES MAY BE USED.

J.U.L.I.E.  
JOINT UTILITY LOCATION INFORMATION FOR EXCAVATION  
1-800-892-0123

GROSS LENGTH OF PROJECT = 2440 LIN. FT = 0.46 MILE  
NET LENGTH OF PROJECT = 2440 LIN. FT = 0.46 MILE

STATE OF ILLINOIS  
DEPARTMENT OF TRANSPORTATION  
DIVISION OF HIGHWAYS

SUBMITTED 8/10 20 07

*Chris J. [Signature]*  
DEPUTY DIRECTOR OF HIGHWAYS, REGION ENGINEER

October 12, 20 07

*Eric E. [Signature]*  
ENGINEER OF DESIGN AND ENVIRONMENT

October 12, 20 07

*Milton R. [Signature]*  
DIRECTOR OF HIGHWAYS, CHIEF ENGINEER

PRINTED BY THE AUTHORITY  
OF THE STATE OF ILLINOIS