

F.A.P. RTE.	SECTION	COUNTY	TOTAL SHEETS	SHEET NO.
553	120I-2	OGLE	59	19
STA. _____		TO STA. _____		
FED. ROAD DIST. NO. _____ ILLINOIS FED. AID PROJECT				

PATRICIA A. BOSETTI

SN 071-1161

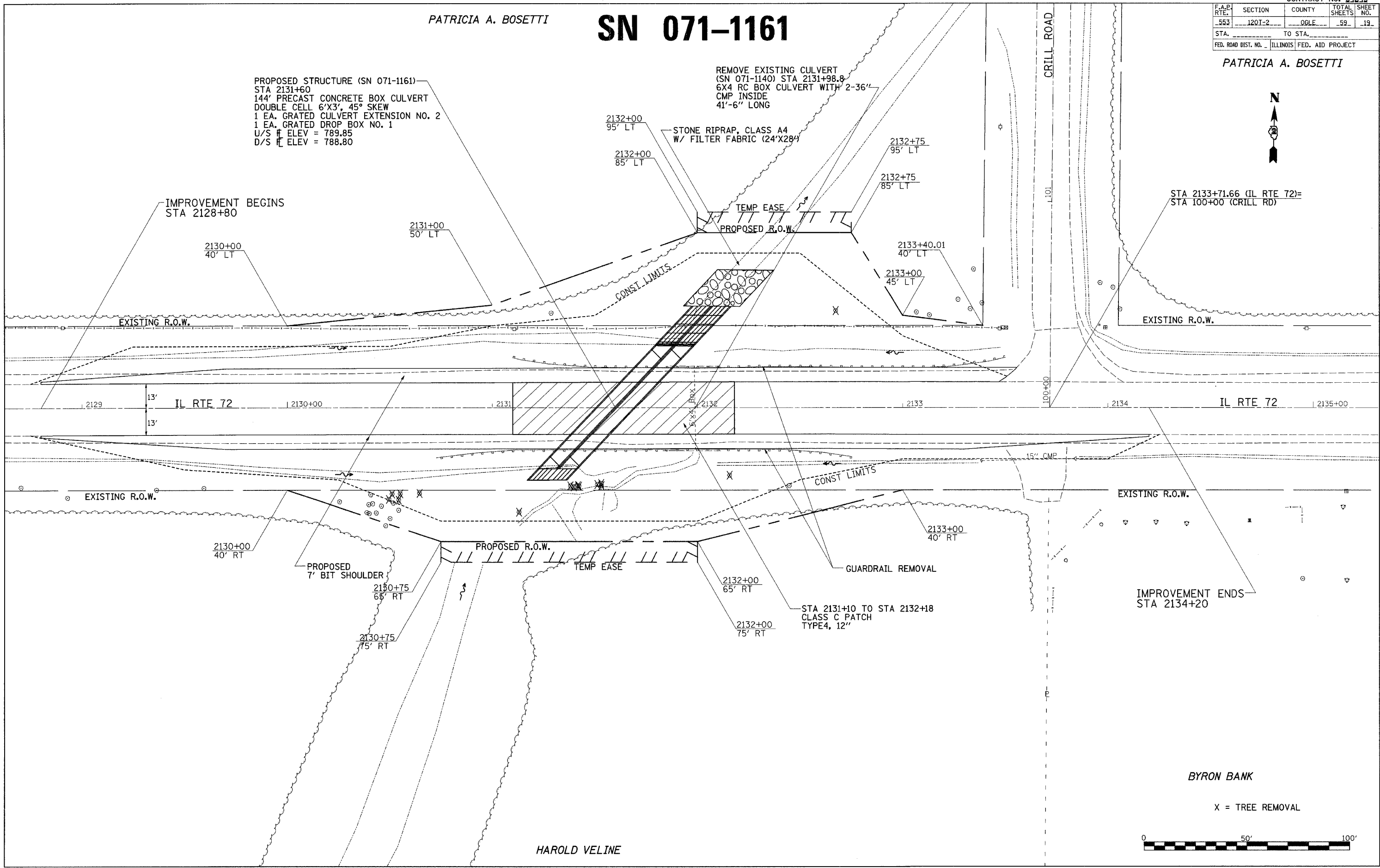
PATRICIA A. BOSETTI



PROPOSED STRUCTURE (SN 071-1161)
 STA 2131+60
 144' PRECAST CONCRETE BOX CULVERT
 DOUBLE CELL 6'X3', 45° SKEW
 1 EA. GRATED CULVERT EXTENSION NO. 2
 1 EA. GRATED DROP BOX NO. 1
 U/S ELEV = 789.85
 D/S ELEV = 788.80

REMOVE EXISTING CULVERT
 (SN 071-1140) STA 2131+98.8
 6X4 RC BOX CULVERT WITH 2-36"
 CMP INSIDE
 41'-6" LONG

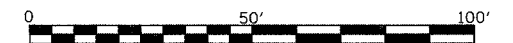
STA 2133+71.66 (IL RTE 72)=
 STA 100+00 (CRILL RD)



PLOT DATE = Mon Jul 30 11:46:53 2007
 PLOT SCALE = 1/4" = 10' (Horizontal) / 1/8" = 10' (Vertical)
 USER NAME = dbosetti

BYRON BANK

X = TREE REMOVAL



HAROLD VELINE