

RED BIRD PARTNERS, LP

SN 071-1160

RED BIRD PARTNERS, LP

CONTRACT NO. 64843

F.A.P. RTE.	SECTION	COUNTY	TOTAL SHEETS	SHEET NO.
553	1201-2	OGLE	59	25
STA. _____		TO STA. _____		
FED. ROAD DIST. NO. _____ ILLINOIS FED. AID PROJECT				

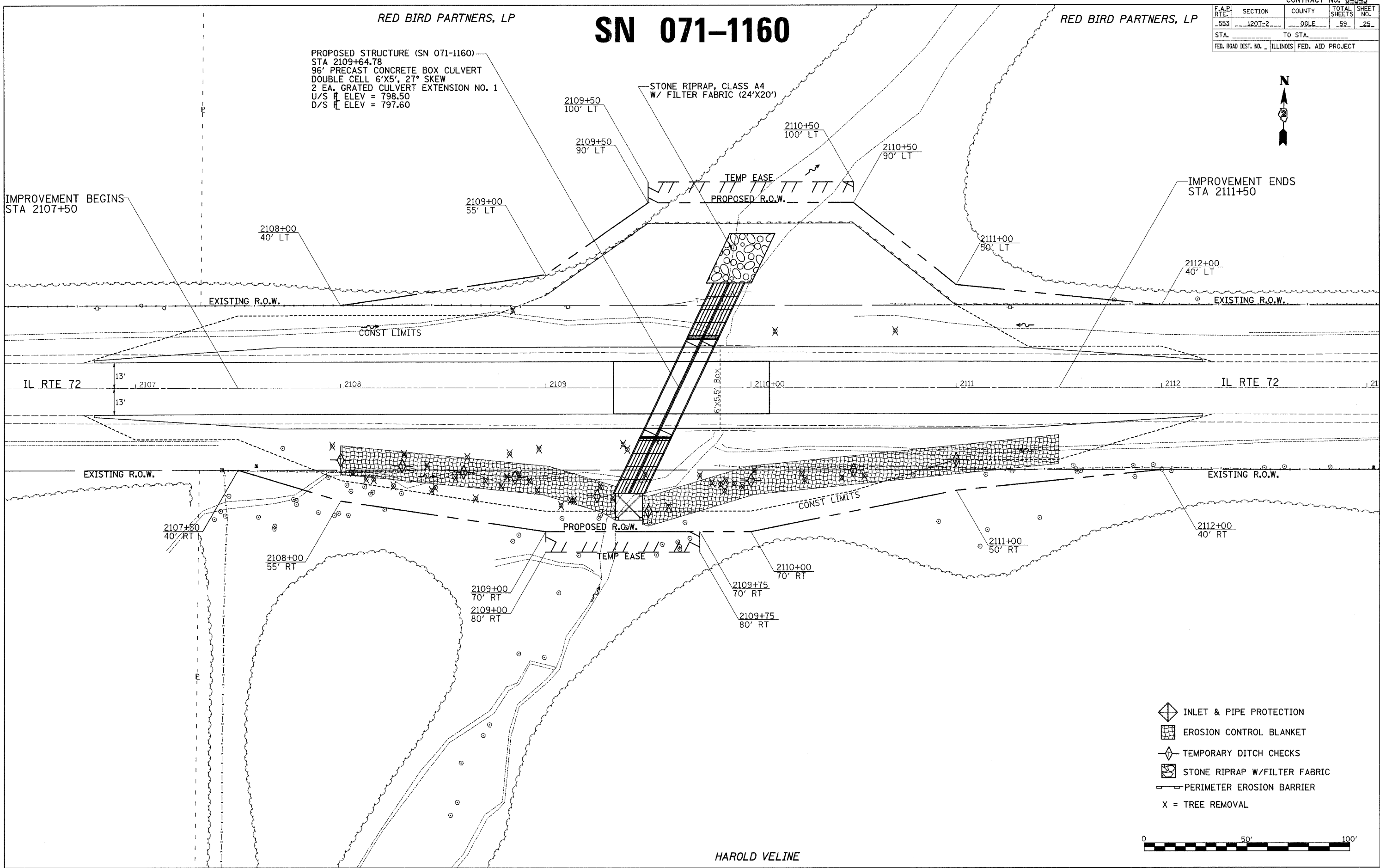
PROPOSED STRUCTURE (SN 071-1160)
 STA 2109+64.78
 96' PRECAST CONCRETE BOX CULVERT
 DOUBLE CELL 6'X5', 27° SKEW
 2 EA. GRATED CULVERT EXTENSION NO. 1
 U/S ELEV = 798.50
 D/S ELEV = 797.60

STONE RIPRAP, CLASS A4
 W/ FILTER FABRIC (24'X20')



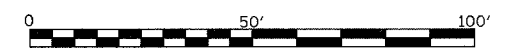
IMPROVEMENT BEGINS
 STA 2107+50

IMPROVEMENT ENDS
 STA 2111+50



IL RTE 72 2107 2108 2109 2110+00 2111 2112 IL RTE 72

- INLET & PIPE PROTECTION
- EROSION CONTROL BLANKET
- TEMPORARY DITCH CHECKS
- STONE RIPRAP W/FILTER FABRIC
- PERIMETER EROSION BARRIER
- X = TREE REMOVAL



PLOT DATE = Tue Aug 07 09:24:36 2007
 PLOT SCALE = 1/8" = 20'-0" (1/8" = 20'-0")
 USER NAME = dssadd

HAROLD VELINE

EROSION CONTROL DETAILS