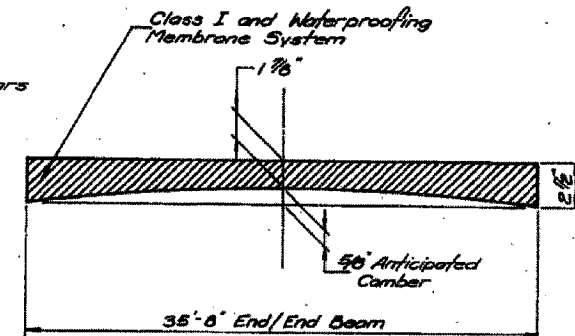
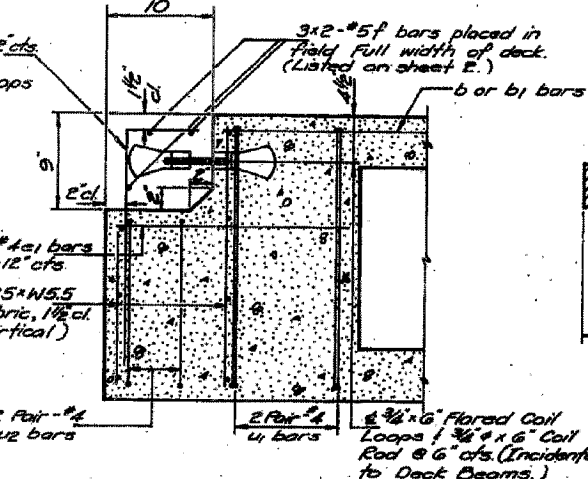
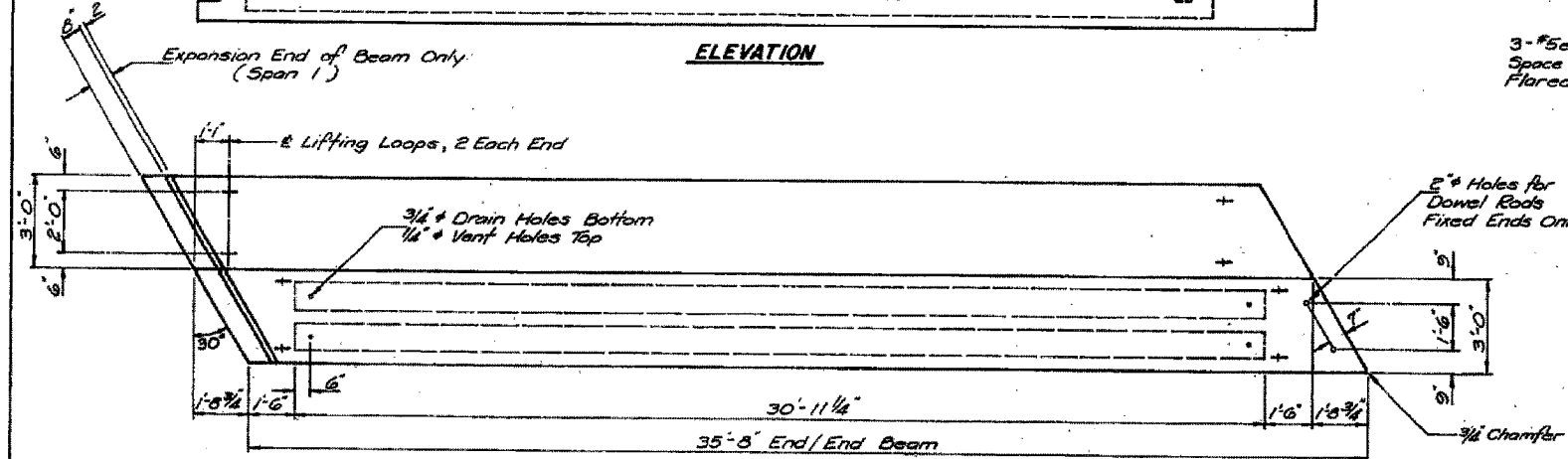
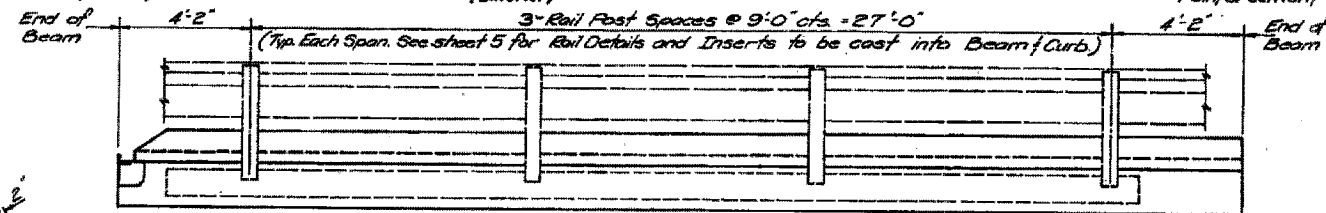
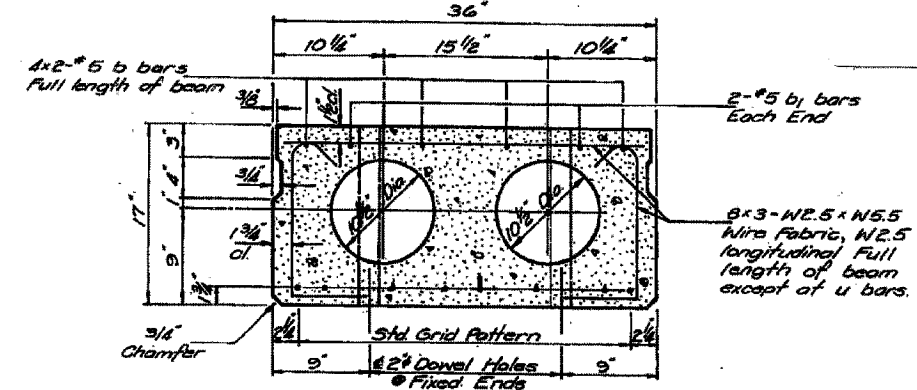
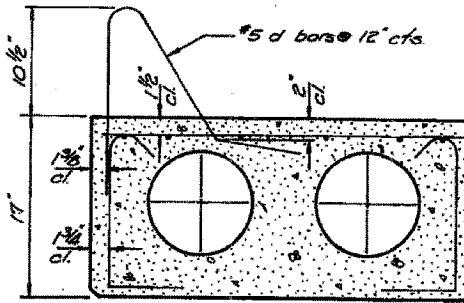
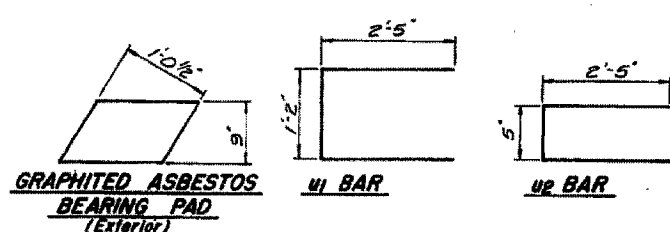
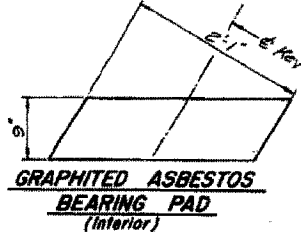
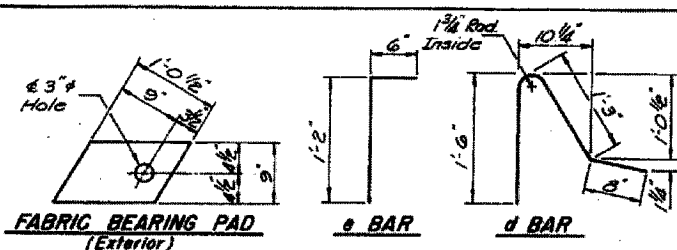
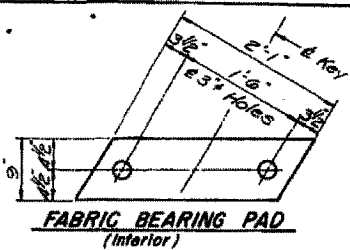


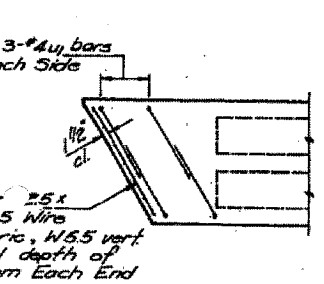
NO.	DATE	BY	CHECKED	SCALE	SHEET
1	7/10/58	J.D. DAVISS			7
2					
3					
4					
5					



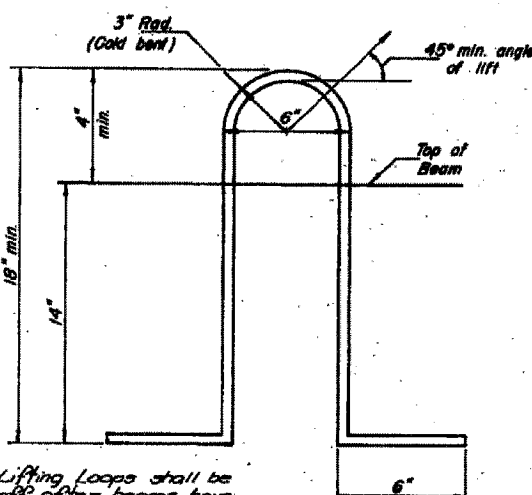
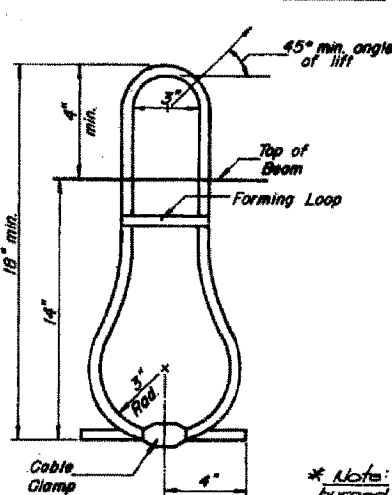
ANTICIPATED CAMBER DIAGRAM

ONE BEAM SHALL BE INSTALLED

Beam No.	Span	Length	Support	Interior Unit No.	Interior Unit Length
b1	25'	30'		1	25'
b2	25'	30'		1	25'
b3	25'	30'		1	25'
b4	25'	30'		1	25'
b5	25'	30'		1	25'
b6	25'	30'		1	25'
b7	25'	30'		1	25'
b8	25'	30'		1	25'
b9	25'	30'		1	25'
b10	25'	30'		1	25'



DESIGNED: V.S.N.
CHECKED: D.H.C.
DRAWN: R.A.W.
CHECKED: K.L.F.



* Note: Lifting Loops shall be burned off after beams have been erected.

- NOTES**
- Prestressing steel shall be non-galvanized high strength, stress-relieved 7-wire strand, Grade 270. The nominal diameter shall be 1/2" and the nominal cross-sectional area shall be 0.183 sq. in. Lifting loops shall be 1/2" diameter, 5x25 class wire rope with fiber core and shall have a minimum ultimate tensile strength of 21,000 lbs. or 2-1/2" - 270 ksi strands.
 - After beams have been erected, holes for the dowel anchors shall be drilled into the substructure and the anchor dowels shall be grouted in place.
 - Reinforcement bars shall conform to ASTM A-31 or A-36, Grade 60.
 - One of reinforcement and accessories cast into the beam at bearing ends, of armor angles, and of grouting longitudinal shear keys is included in unit price bid for "Precast Prestressed Concrete Deck Beams."
 - The bearing seat surfaces shall be adjusted by shimming to assure firm and even bearing. Two 1/8" fabric adjusting shims of the dimensions of the Exterior Bearing Pad shall be provided for each bearing.
 - Keyway surfaces shall be cleaned to remove form oil or other bonding material prior to shipment of beams. Cleaning shall be done by sandblasting the keyway areas between the top of the beam and the bottom edge of the key.