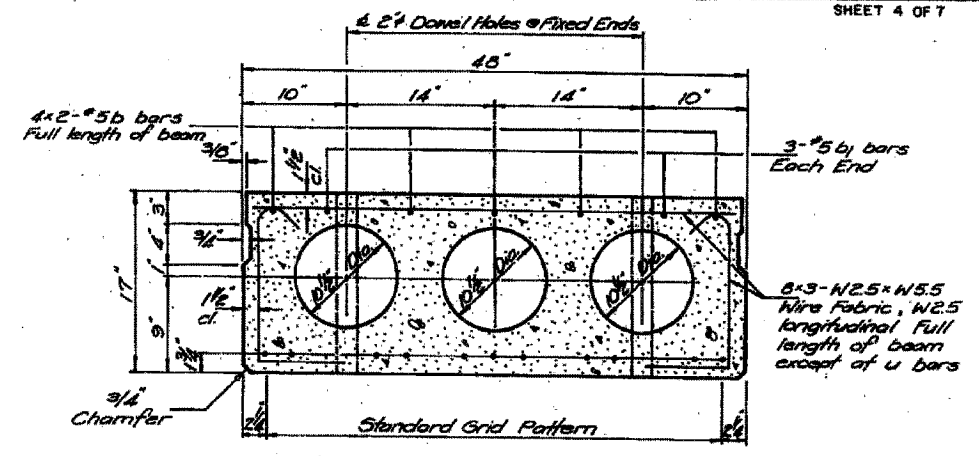
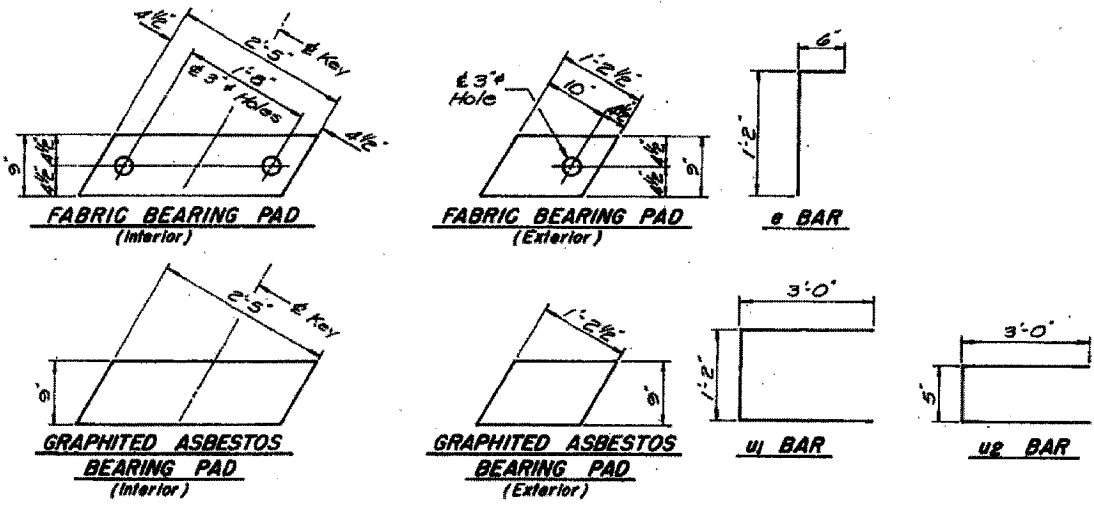
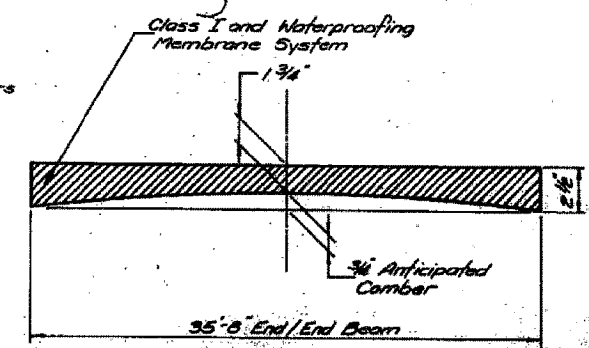
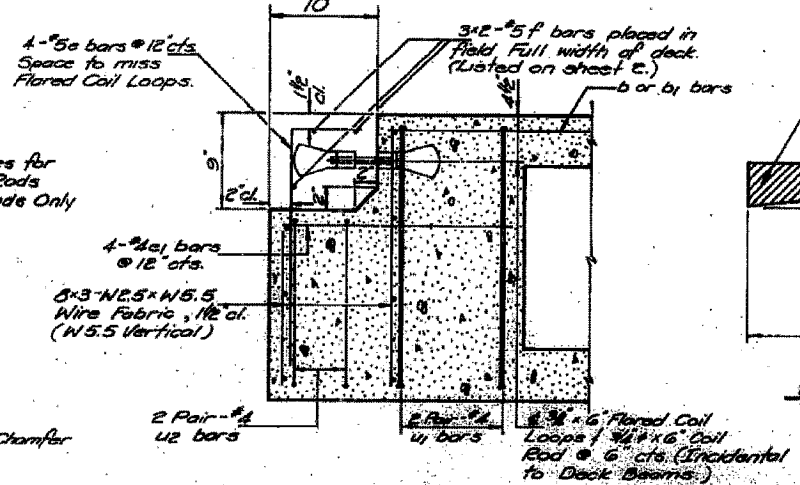
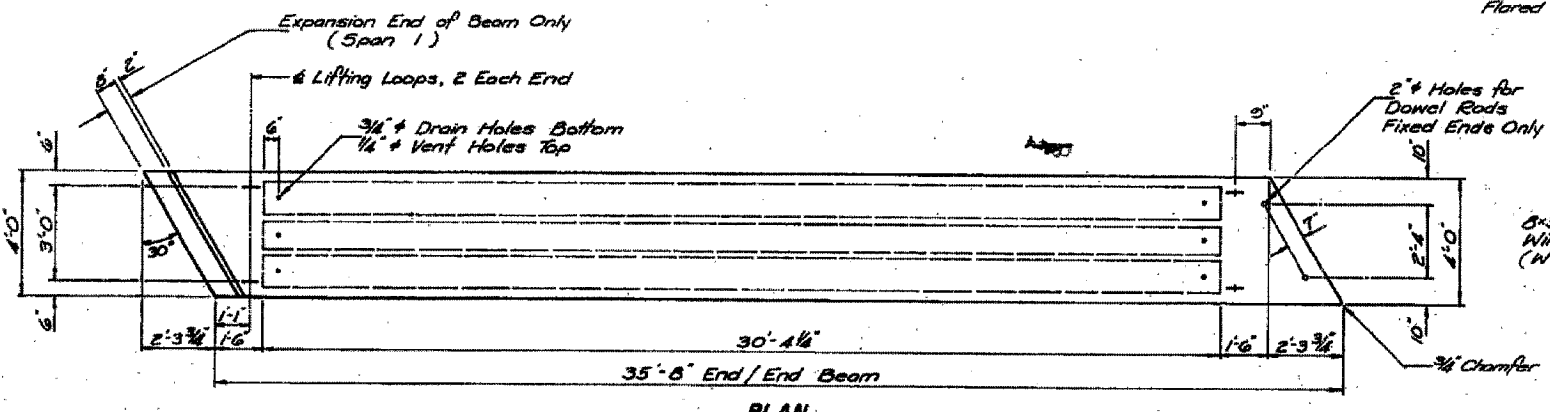


PROJECT	NO.	DATE	BY
NO.	NO.	NO.	NO.

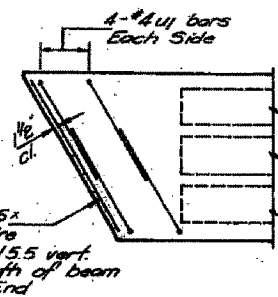


TYPICAL SECTION
 1/2" Strands, Each Strand Stressed to 28,900 lbs.
 11-Strands 1 3/4" up.
 Place Strands Symmetrically about C of Beam.

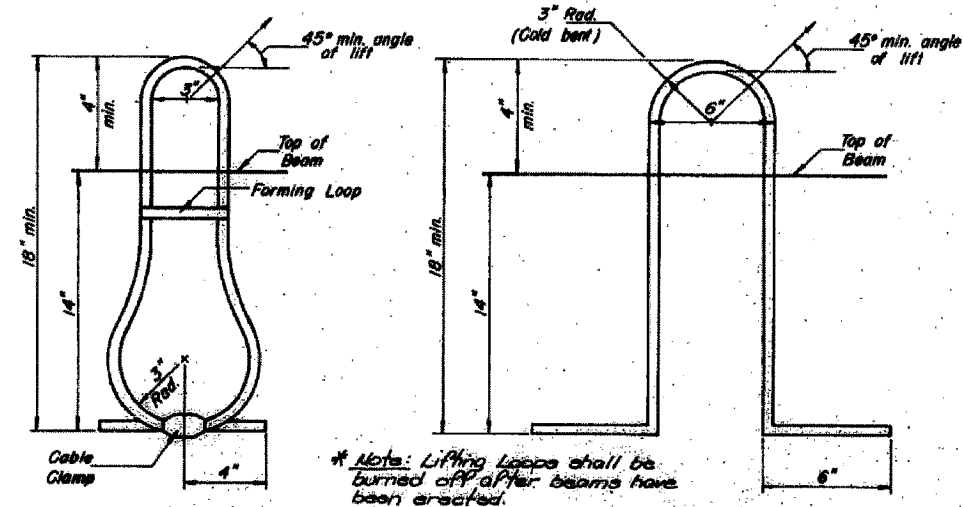
Handwritten notes: 35'-8" 34'-1" 4" eB19 - eB19



ANTICIPATED CAMBER DIAGRAM



END PLAN (FIXED END)



LIFTING LOOP DETAIL ALTERNATE (A)

LIFTING LOOP DETAIL ALTERNATE (U)

* Note: Lifting Loops shall be burned off after beams have been erected.

END OF BEAM

NOTES

Prestressing steel shall be non-petroleum base, strand, stress-relieved, Type 1920, Grade 270. The nominal diameter shall be 1/2" and the nominal cross-sectional area shall be 0.196 sq. in. Lifting loops shall be 1/2" diameter, 6 x 25 chrome manganese steel and the minimum ultimate tensile strength of 11,000 lbs. or 2-1/2 x 270 ksi. After beams have been erected, holes for the steel anchors shall be drilled into the substructure and the anchor bolts shall be installed in place. Reinforcement bars shall be installed in accordance with the drawings. Care of reinforcement and substructure shall be the responsibility of the contractor. Cleaning shall be done by sandblasting. The working end surface shall be cleaned by sandblasting to remove rust and other material. The 1/8" fabric supporting wires of the substructure of the concrete bearing pad shall be provided for each bearing. Railway surfaces shall be cleaned to remove rust and/or other hard breaking material and to provide a clean surface. Cleaning shall be done by sandblasting. Between the top of the beam and the bottom of the key.

No.	Site	Length

DESIGNED:	V. S. N.
CHECKED:	D. H. G.
DRAWN:	R. A. W.
CHECKED:	K. L. F.