

F.A.P. RTE.	SECTION	COUNTY	TOTAL SHEETS	SHEET NO.
308	(104BR)M	JO DAVIESS	13	1

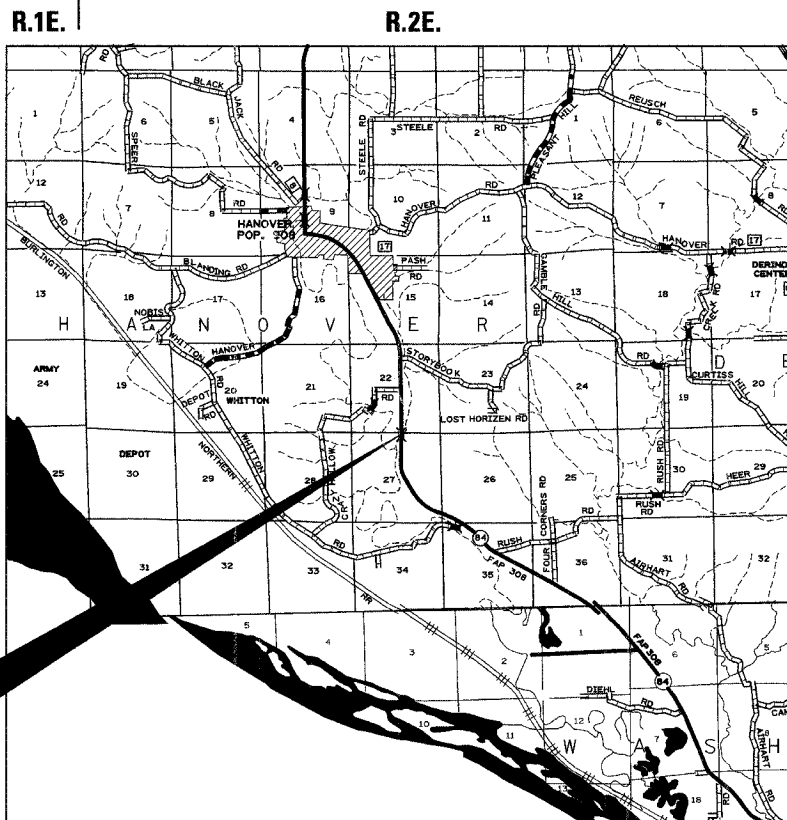
STATE OF ILLINOIS  
DEPARTMENT OF TRANSPORTATION  
DIVISION OF HIGHWAYS

**PROPOSED  
HIGHWAY PLANS**

FAP ROUTE 308 (IL 84)  
SECTION (104BR)M  
PROJECT  
JO DAVIESS COUNTY  
C-92-009-08

FOR INDEX OF SHEETS, SEE SHEET NO. 2  
FOR STATE STANDARDS, SEE SHEET NO. 2

D-92-015-08



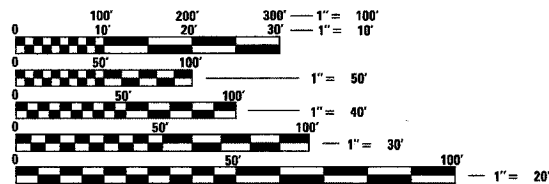
T.26 N.

CARROLL COUNTY

HANOVER TOWNSHIP SECTION - 27

PROJECT LOCATION  
STR. NO. 043-0038

CARROLL COUNTY



FULL SIZE PLANS HAVE BEEN PREPARED USING STANDARD ENGINEERING SCALES. REDUCED SIZED PLANS WILL NOT CONFORM TO STANDARD SCALES. IN MAKING MEASUREMENTS ON REDUCED PLANS, THE ABOVE SCALES MAY BE USED.

J.U.L.I.E.  
JOINT UTILITY LOCATION INFORMATION FOR EXCAVATION  
1-800-892-0123

STATE OF ILLINOIS  
DEPARTMENT OF TRANSPORTATION  
DIVISION OF HIGHWAYS

SUBMITTED August 27, 20 07  
George F. Ryan  
DEPUTY DIRECTOR OF HIGHWAYS, REGION ENGINEER

October 12, 20 07  
Eric E. Haran  
ENGINEER OF DESIGN AND ENVIRONMENT

October 12, 20 07  
Milton R. Sees, P.E.  
DIRECTOR OF HIGHWAYS, CHIEF ENGINEER

**PRINTED BY THE AUTHORITY  
OF THE STATE OF ILLINOIS**

PROJECT ENGINEER: NAHMOUD ETEMADI (815) 284-5393

CONTRACT NO. 64D87

FAP ROUTE 308 (IL 84) SECTION (104BR)M JO DAVIESS COUNTY

F.A.P. RTE.	SECTION	COUNTY	TOTAL SHEETS	SHEET NO.
308	(104BRIM	JO DAVIESS	13	2
STA.		TO STA.		
FED. ROAD DIST. NO.	ILLINOIS	FED. AID PROJECT		

## INDEX OF SHEETS

1	COVER SHEET
2	INDEX OF SHEETS
2	STATE STANDARDS
3	SUMMARY OF QUANTITIES
4	GENERAL NOTES
5 - 6	SN 043-0038 DETAILS
7 - 13	EXISTING STRUCTURE PLANS FOR SN 043-0038

## STATE STANDARDS

701006 - 02	Off-Road Operations, 2L, 2W, More Than 4.5 m (15') Away
701201 - 02	Lane Closure, 2L, 2W, Day Only, for Speeds > 45 MPH
702001 - 06	Traffic Control Devices

F.A.P. RTE.	SECTION	COUNTY	TOTAL SHEETS	SHEET NO.
308	004BRM	JO DAVIESS	13	3
STA.		TO STA.		
FED. ROAD DIST. NO.	ILLINOIS FED. AID PROJECT			

CODE NUMBER	ITEM	UNIT	TOTAL QUANTITY	100% STATE
				043-0038
				SFTY - 2A
				100% STATE
50500405	FURNISHING AND ERECTING STRUCTURAL STEEL	POUND	35980	35980
67100100	MOBILIZATION	L SUM	1	1
70100450	TRAFFIC CONTROL AND PROTECTION, 701201 <sup>STANDARD</sup>	L SUM	1	1

\*SPECIALTY ITEM

# GENERAL NOTES

ROUTE NO.	SEC.	COUNTY	TOTAL SHEETS	SHEET NO.
FAP 308 (IL 84)	(104BR)M	JoDaviess	13	4
FED ROAD DIST. NO.	ILLINOIS	PROJECT		
Contract #64D87				

This structure will retain the same number 043-0038.

The contractor shall submit four copies of the required shop drawings for review and approval to the Bureau of Bridges and Structures, 2300 South Dirksen Parkway, Springfield, IL 62764. After approval of initial submittal, the contractor shall submit one set of shop drawings to Dave Lippert, Engineer of Materials, 126 East Ash Street, Springfield, IL 62706, and eight (8) sets of shop drawings to be distributed to:

- District 2 District Engineer (1)
- Fabricator (1)
- Contractor (2)
- Resident Engineer (2)
- District 2 Bureau of Materials (2)

The Contractor shall be responsible for protecting utility property during construction operations as outlined in Article 107.31 of the Standard Specifications. A minimum of 48 hours advance notice is required for non-emergency work. The JULIE number is 800-892-0123. The following listed utilities located within the project limits or immediately adjacent to the project construction limits are members of JULIE:

- Gallatin River Communications
- Verizon

If any guardrail is removed, it shall be the responsibility of the contractor to replace at no cost to the Department.

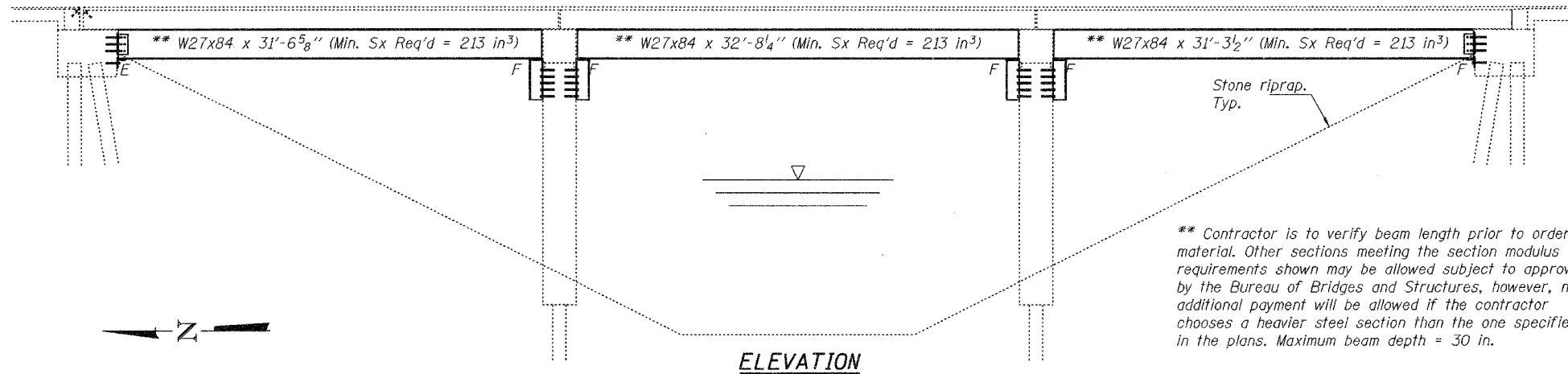
Program #5  
(Arch. Size)  
Enlarge  
200%  
Enlarge 107%

STATE OF ILLINOIS  
DEPARTMENT OF TRANSPORTATION

ROUTE NO.	SECTION	COUNTY	TOTAL SHEETS	SHEET NO.
308	*	JO DAVIESS	13	5
FED. ROAD DIST. NO. 7		ILLINOIS	FED. AID PROJECT-	

SHEET NO. 1  
2 SHEETS

Contract Number: 64D87



**GENERAL NOTES**

All structural steel shall conform to AASHTO Classification M-270 Gr. 36, unless otherwise noted.

Plan dimensions and details relative to existing plans are subject to routine variations. The Contractor shall field verify existing dimensions and details affecting new construction and make necessary approved adjustments prior to construction or ordering of materials. Such variations shall not be cause for additional compensation for a change in scope of the work, however, the Contractor will be paid for the quantity actually furnished based upon the unit price bid for the work.

The contractor is advised that the existing PPC Deck Beams are in a deteriorated condition with reduced load carrying capacity. It is the contractor's responsibility to account for the condition of the beams when developing construction procedures.

See Section 584 of the Standard Specifications for Epoxy Grouting of Threaded Rods; Minimum embedment 9".

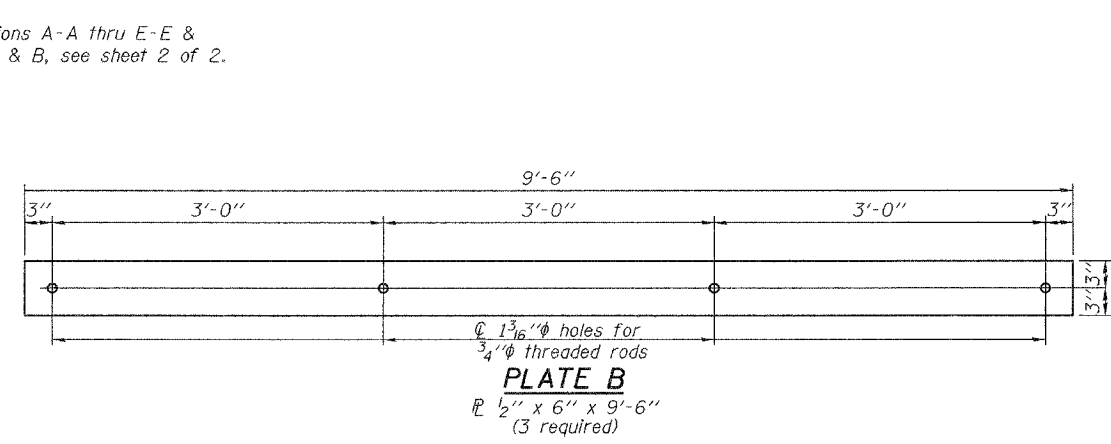
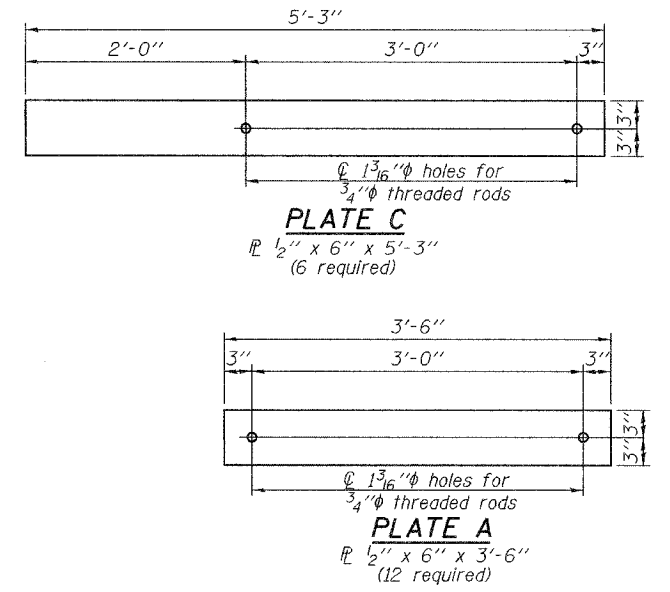
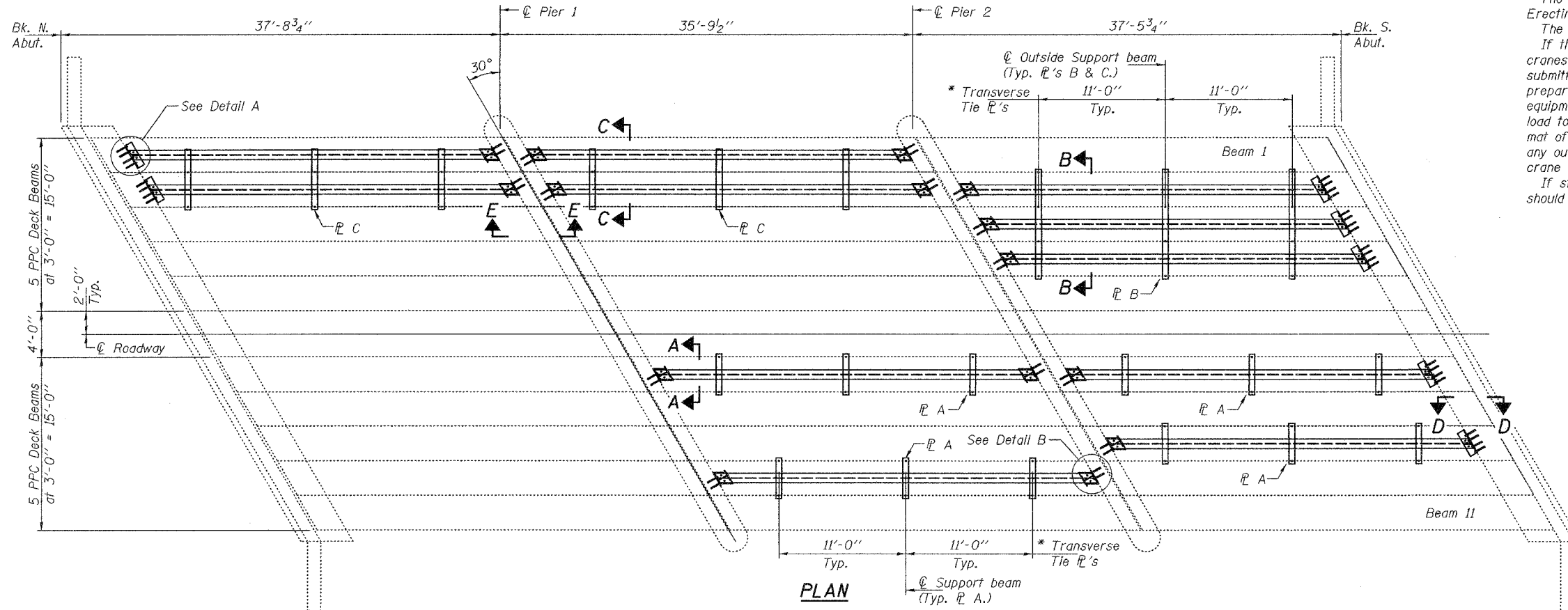
The cost of epoxy grouting threaded rods on the pier cap and beams shall be included with Furnishing and Erecting Structural Steel.

The cost of any excavation required shall be included with Furnishing and Erecting Structural Steel.

The Contractor has the option of using used steel. See Special Provisions.

If the contractor's procedure for placement of beams involves placement of cranes or other heavy equipment on the bridge, a detailed procedure shall be submitted to the Engineer for approval. The procedure shall include calculations, prepared and sealed by an Illinois Licensed Structural Engineer, verifying that the equipment and procedure used will not overstress the existing beams. To distribute load to multiple beams and protect the existing surface, in all cases a double layer mat of heavy timbers shall be used at all times under crane tracks or wheels and any outriggers in the down position. If necessary, shims shall be used under the crane mat to ensure uniform contact with the underlying beams.

If staging is required for installation of the steel beams, Stage I construction should be on the east side of the structure.



**TOTAL BILL OF MATERIAL**

ITEM	UNIT	QUANTITY
Furnishing and Erecting Structural Steel	Pound	35980

**PLAN AND ELEVATION  
FA 18 OVER  
TRIBUTARY TO APPLE RIVER  
JO DAVIESS COUNTY  
SN 043-0038**

DESIGNED	SJB
CHECKED	VHV
DRAWN	baliva
CHECKED	SJB VHV

SEPTMBER 10, 2007

EXAMINED *Ralph E. Anderson*  
REPAIR PLANS UNIT CHIEF

PASSED *Ralph E. Anderson*  
ENGINEER OF BRIDGES AND STRUCTURES



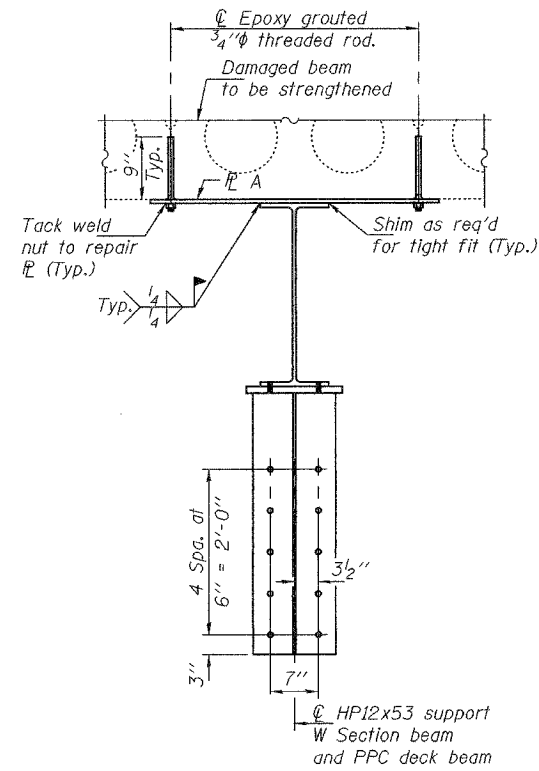
Expires: November 30, 2008

STATE OF ILLINOIS  
DEPARTMENT OF TRANSPORTATION

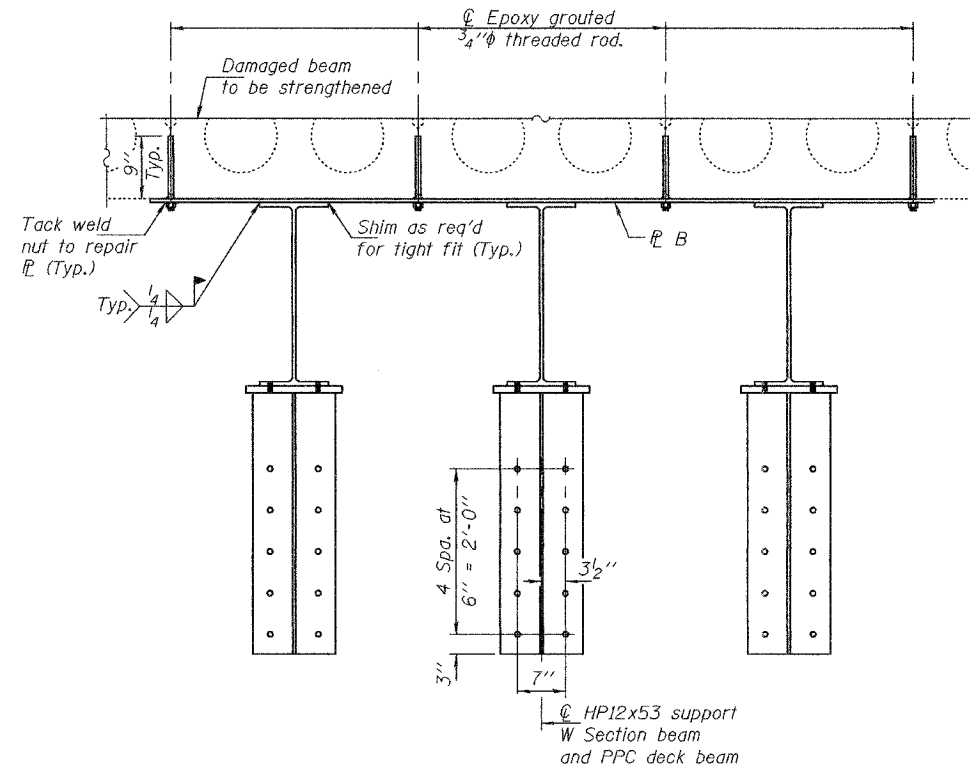
ROUTE NO.	SECTION	COUNTY	TOTAL SHEETS	SHEET NO.
308	*	JO DAVIESS	13	6
FED. ROAD DIST. NO. 7		ILLINOIS		FED. AID PROJECT-

Contract Number: 64D87

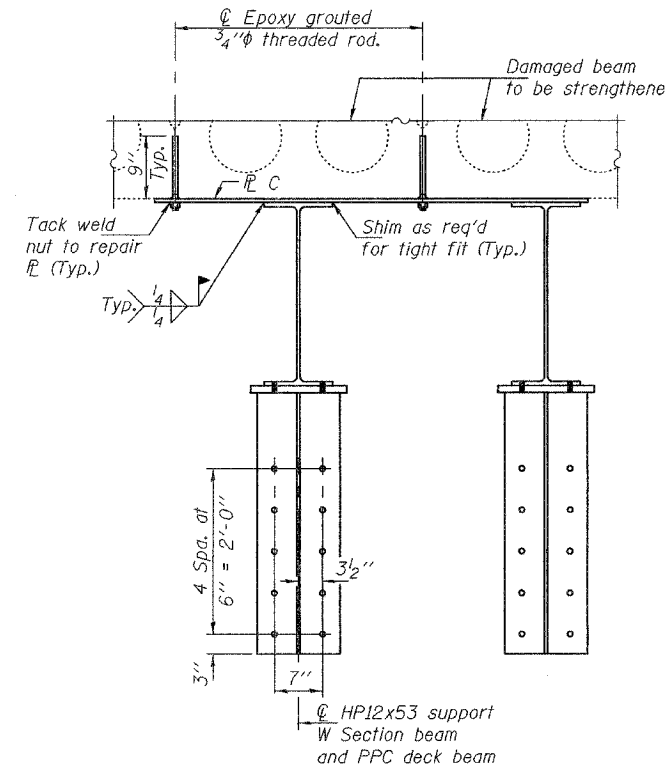
SHEET NO. 2  
2 SHEETS



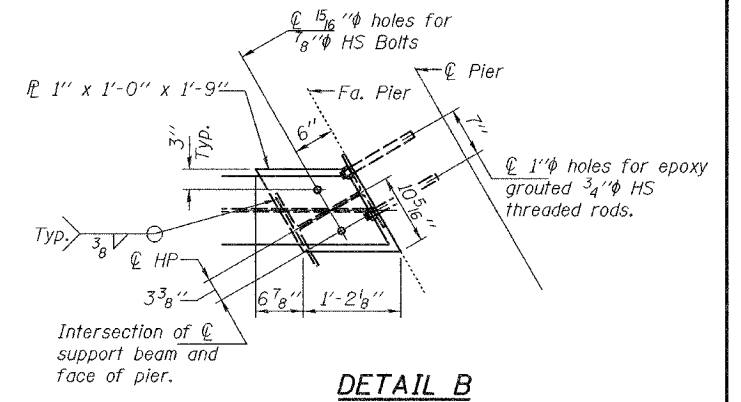
SECTION A-A



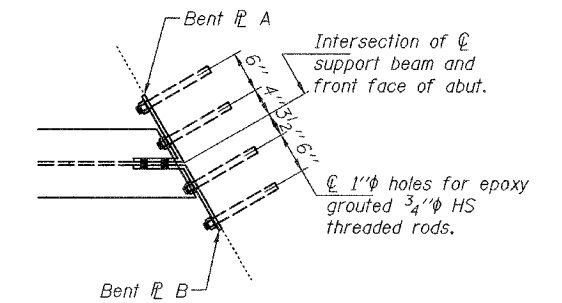
SECTION B-B



SECTION C-C

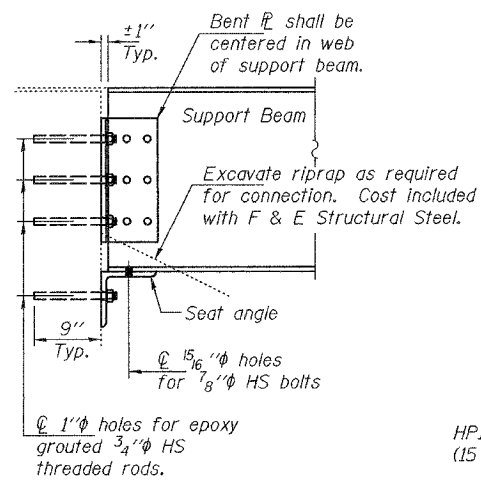


DETAIL B

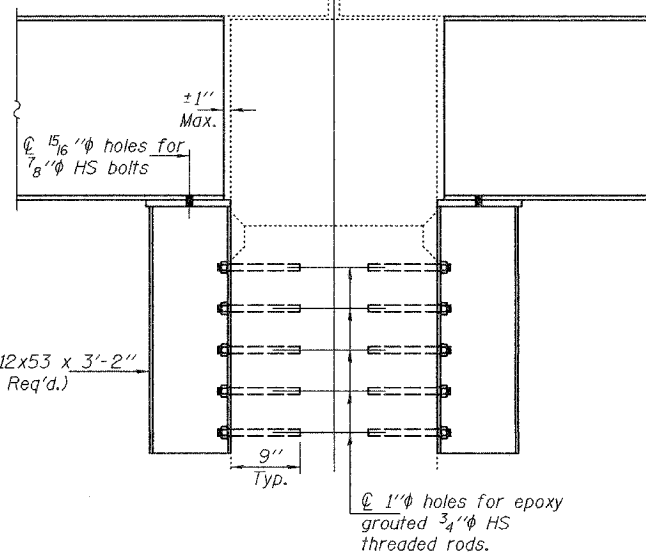


DETAIL A

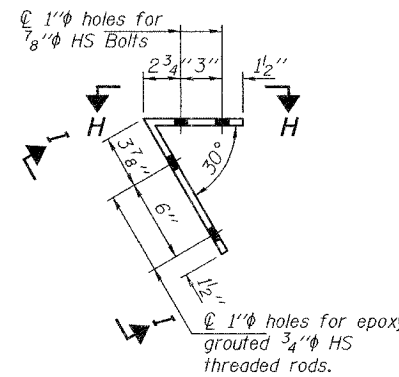
L 8 x 8 x 3/4 not shown for clarity



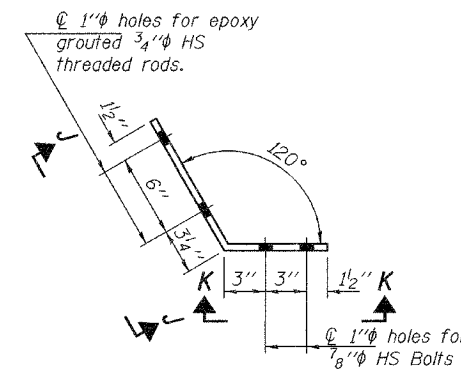
SECTION D-D



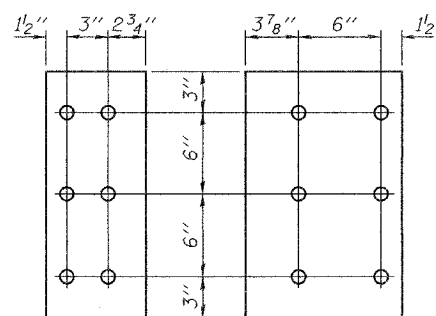
SECTION E-E



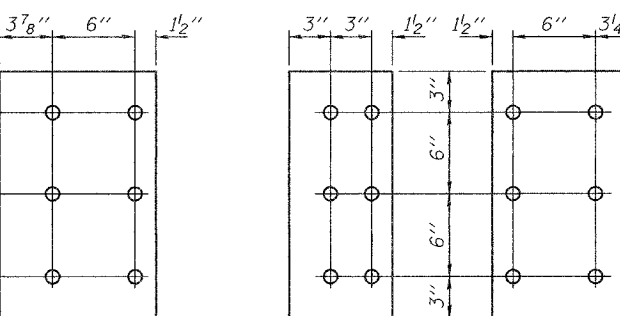
BENT PLATE A  
L 1/2" x 1'-6" x 1'-6 5/8"  
(7 Req'd)



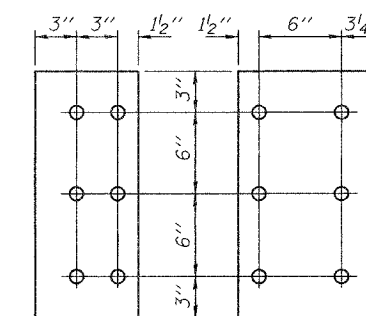
BENT PLATE B  
L 1/2" x 1'-6" x 1'-6 1/4"  
(7 Req'd)



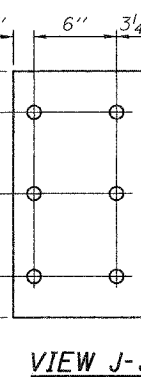
VIEW H-H



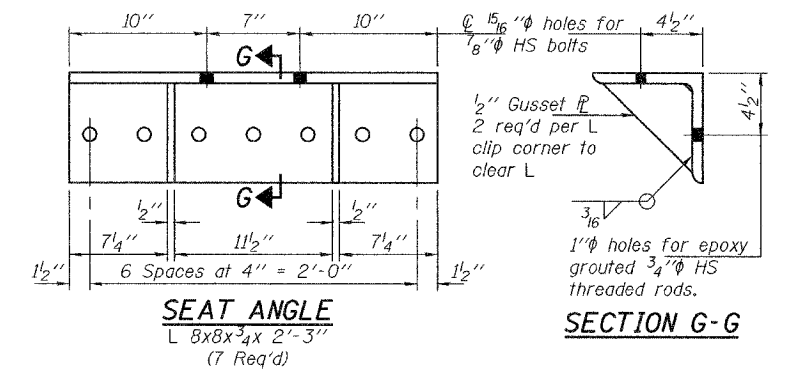
VIEW I-I



VIEW K-K



VIEW J-J



SEAT ANGLE  
L 8x8x3/4 x 2'-3"  
(7 Req'd)

SECTION G-G

DESIGNED	SJB
CHECKED	VHV
DRAWN	baliva
CHECKED	SJB VHV

SEPTEMBER 10, 2007

EXAMINED *Carl Poyry*  
REPAIR PLANS UNIT CHIEF

PASSED *Ralph E. Anderson*  
ENGINEER OF BRIDGES AND STRUCTURES

REPAIR DETAILS  
FA 18 OVER  
TRIBUTARY TO APPLE RIVER  
JO DAVIESS COUNTY  
SN 043-0038

STATE OF ILLINOIS  
DEPARTMENT OF TRANSPORTATION

FOR INFORMATIONAL PURPOSES ONLY

CONTRACT #64D87

043-00 ~~00~~  
38

PROJECT NO.	SECTION	COUNTY	TOTAL SHEETS	SHEET NO.
043-00	104-BR	JO DAVIESS	13	7

P-92-083-79

INDEX OF SHEETS

1. COVER SHEET
2. TYPICAL SECTIONS & CONSTRUCTION DETAILS
3. SUMMARY OF QUANTITIES & GENERAL NOTES
4. SCHEDULE OF QUANTITIES
5. PLAN & PROFILE ILL. RTE. 84
6. PLAN & PROFILE RUNAROUND
- 7-13. BRIDGE PLANS
14. BOX CULVERT EXTENSION
- 15-19. STATION CROSS SECTIONS

STANDARD NUMBERS:

- 1686-4 SYMBOLS & ABBREVIATIONS
- 2113-2 NAME PLATE FOR BRIDGES
- 2298-5 TYPICAL APPLICATION OF TRAFFIC CONTROL DEVICES
- 2299-9 DESIGN OF TRAFFIC CONTROL DEVICES
- 2300-2 FLAGMEN TRAFFIC CONTROL SIGN
- 2301-4 TYPICAL APPLICATION OF TRAFFIC CONTROL DEVICES (CASE I)
- 2302-4 TYPICAL APPLICATION OF TRAFFIC CONTROL DEVICES (CASE II)
- 2303-5 TYPICAL APPLICATION OF TRAFFIC CONTROL DEVICES (CASE III)
- 2305-4 TYPICAL APPLICATION OF TRAFFIC CONTROL DEVICES (CASE IV)
- 2310-5 TYPICAL APPLICATION OF TRAFFIC CONTROL DEVICES (CASE V)
- 2324-5 BRIDGE APPROACH SHOULDER PAVEMENT
- 2336-3 TRAFFIC BARRIER TERMINAL, TYPE 1 & 1A
- 2340-3 TRAFFIC BARRIER TERMINAL, TYPE 5 & 5A
- 2382-1 BRIDGE APPROACH PAVEMENT (2 SHEETS)
- 2135 DETAILS OF PERMANENT SURVEY MARKERS
- 2149-II DELINEATORS
- 2350-2 METAL POSTS FOR SIGNS, MARKERS & DELINEATORS
- 2230-13 STEEL PLATE BEAM GUARDRAIL
- 2381 TEMPORARY EROSION CONTROL SYSTEMS
- 2228-4 METAL END SECTION FOR PIPE CULVERTS

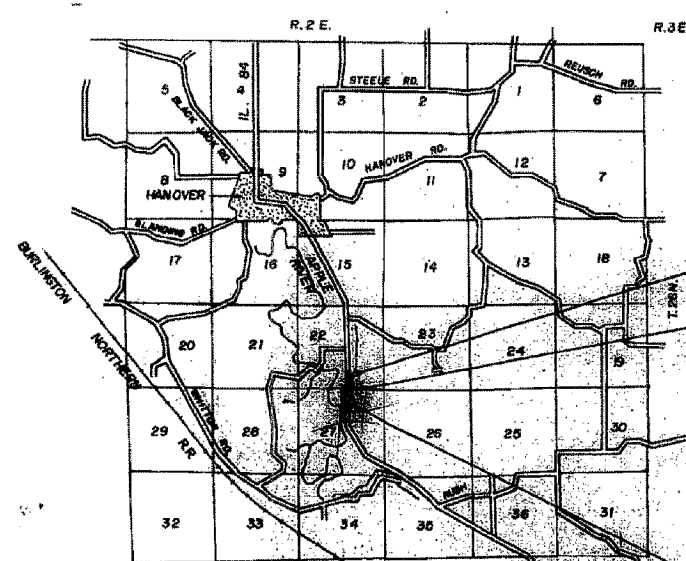
PLANS FOR PROPOSED  
FEDERAL AID HIGHWAY

SCALE IN FEET



F.A. ROUTE 18 (ILL. 84)  
SECTION 104-BR  
PROJECT GR-18 (117)  
JO DAVIESS COUNTY

C-92-065-81



PROJECT GR-18 (117)  
SECTION 104-BR  
BEGINS STA. 123+25

SECTION 104-BR STA. 125+71  
CONSISTS OF A THREE SPAN PRECAST PRESTRESSED  
CONCRETE DECK BEAM STRUCTURE CARRYING F.A.  
ROUTE 18 OVER A TRIBUTARY TO APRILE RIVER.  
THREE EQUAL SPANS AT 84'-4" CENTER TO CENTER  
OF PILES, 111'-0" BACK TO BACK OF ABUTMENTS  
SUPPORTED ON CONCRETE ENCASED PILE BENT  
PIERS AND SPILL THRU PILE BENT ABUTMENTS.  
SKEW 50° RT.



LENGTH OF SECTION = 575.00 FEET (0.93 MILES)  
LENGTH OF BRIDGE = 575.00 FEET (0.93 MILES)

STATE OF ILLINOIS  
DEPARTMENT OF TRANSPORTATION

Submitted: Nov 18 1981

Checked: \_\_\_\_\_

Prepared: \_\_\_\_\_

Approved: \_\_\_\_\_

043-0038

DESIGN DESIGNATION  
465 (2000) MAJOR 0.91 (P.C.C.)

CALL J.U.L.I.E.  
BEFORE YOU DIG  
800-892-0123  
HANOVER TWP.

CONTRACT NO. 35337



**BENCHMARK:** Chisled "D" on Northeast Wingwall of Existing Structure. Elev. 606.37

**EXISTING STRUCTURE:**

Structure No. 043-0029; built as S.B.I. Etc. 80, Section 104 B in 1920 at Station 125+71, consists of a one span reinforced concrete abutments on closed reinforced concrete abutments. Existing bridge length 28'-10 1/2" Bk. to Bk. of Abut. and existing bridge width 40'-0" Face to Face of rail. Contractor shall remove and dispose of the Existing Structure after construction of the temporary runaround is completed. No Salvage.

\*Backwater from Apple River  
H.W.E. 604.7 @ Sta. 605.1  
G.O. 605.1  
G.O. 610.3

**WATERWAY INFORMATION**

Drainage Area - 4.0 Sq. Mi. Low Grade El. 609.00 @ Sta. 125+71.00									
Flood	Freq. Yr.	Q C.F.S.	Opening Sq. Ft.		Nat. #	Head - Ft.		Headwater El.	
			Exist.	Prop.		Exist.	Prop.	Exist.	Prop.
Design	50	1938	202	490	599.50	.99	.13	600.49	599.63
Base	100	2239	217	532	600.20	1.28	.17	601.48	600.37
Max. Calc.	500	2957	251	634	601.80	1.78	.19	603.58	601.99

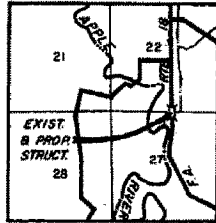
FOR INFORMATIONAL PURPOSES ONLY

**GENERAL NOTES:**

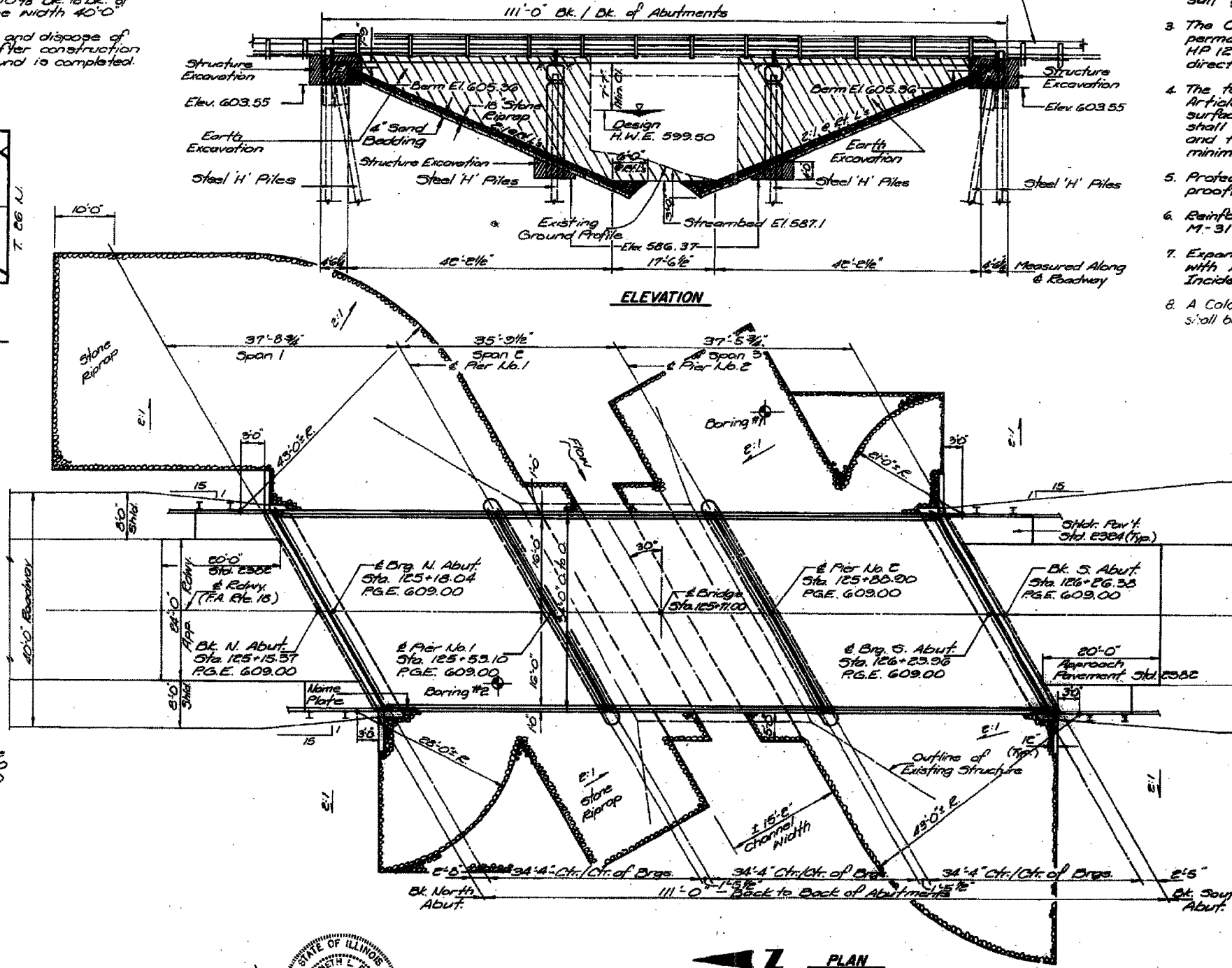
1. See Proposal for Boring Data.
2. Layout of Stone Riprap Slope Wall may be varied in the field to suit ground conditions as directed by the Engineer.
3. The Contractor shall drive one (1) Steel HP 12x53 test pile in a permanent location at the North Abutment and one (1) Steel HP 12x53 test pile in a permanent location at Pier No. 1 as directed by the Engineer before ordering the remainder of piles.
4. The top surface of the beams shall be finished in accordance with Article 505.06 of the Standard Specifications except that the surface shall not be roughened by brooming. The finished surface shall be free of depressions or high spots with sharp corners and the top edge of keys shall be rounded or chamfered a minimum of 1/8".
5. Protective Coat shall not be applied to surfaces to which Waterproofing Membrane System is applied.
6. Reinforcement Bars shall conform to the requirements of A.A.S.H.T.O. M-31 or M-53, Grade 60, unless noted otherwise.
7. Expansion Guards shall be fabricated and erected in accordance with Article 503.07 (c) of the Standard Specifications. Cost Incidental.
8. A Calcium Nitrite Corrosion Inhibitor, as covered in the Special Provisions shall be used in the concrete for precast prestressed concrete deck beams.

NUMBER	REV.	DATE	BY	REASON
1				

SHEET 1 OF 7



LOCATION SKETCH



STATION 125 + 71  
BUILT 1920 BY  
STATE OF ILLINOIS  
FA. 18 SEG 104-BR  
PROJECT 64-B(117)  
LOADING HS 20  
\*STR. NO. \_\_\_\_\_

**NAME PLATE**  
(See Std. 2113)  
\* Structure Number to be supplied by District.

**TOTAL BILL OF MATERIAL**

Item	Unit	Super.	Sub.	Total
Structure Excavation	C.Y.	—	—	209
Bit Conc. Surf. Crs. Mix. D Class I	Ton	47	—	47
Removal of Exist. Structure	Each	—	—	1
Stone Riprap	C.Y.	—	10.47	10.47
Class X Concrete	C.Y.	13.2	211.1	224.3
Prec. Press. Conc. Dt. Bms. 17" Depth	S.F.	3635	—	3635
Steel Reinforcing, Type T-1	L.F.	215	—	215
Reinforcement Bars	Lbs.	470	12350	12820
Steel Piles, HP 12x53	L.F.	—	981	981
Test Piles, Steel HP 12x53	Each	—	2	2
Name Plate	Each	—	—	1
Polymer Concrete Mortar For Crs.	L.F.	1070	—	1070
Waterproofing Membrane System	S.Y.	356	—	356
Protective Coat	S.Y.	36	—	36
Preformed Joint Seal (4")	L.F.	40	—	40

Note: Quantity of Earth Excavation within structure limits included with Roadway Quantities.

**GENERAL PLAN & ELEVATION**

FA. 18 OVER TRUSSWAY TO APPLE RIVER  
SECTION 104-BR  
JO DAVISS COUNTY  
STATION 125+71.00

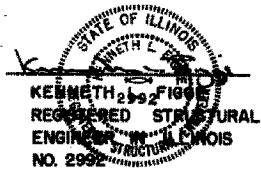
**ROADWAY DATA**

FA. Rte. 18 (Ill. Rte. 84)  
Class: Major Highway  
D.M.V.: 465 (2000)  
A.D.T.: 2100 (1980), 3100 (2000)  
Design Speed: 70 M.P.H.

Structure Sta. 125+71.00  
P.G.E. 609.00

**PROFILE GRADE**  
(Top of Class I)

DESIGNED:	V.S.N.
CHECKED:	K.L.F.
DRAWN:	R.A.W.
CHECKED:	K.L.F.



APPROVED

FOR RECORD - CONTRACT ONLY  
Kenneth J. Pigeon  
Registered Structural Engineer  
No. 2992

**DESIGN STRESSES**

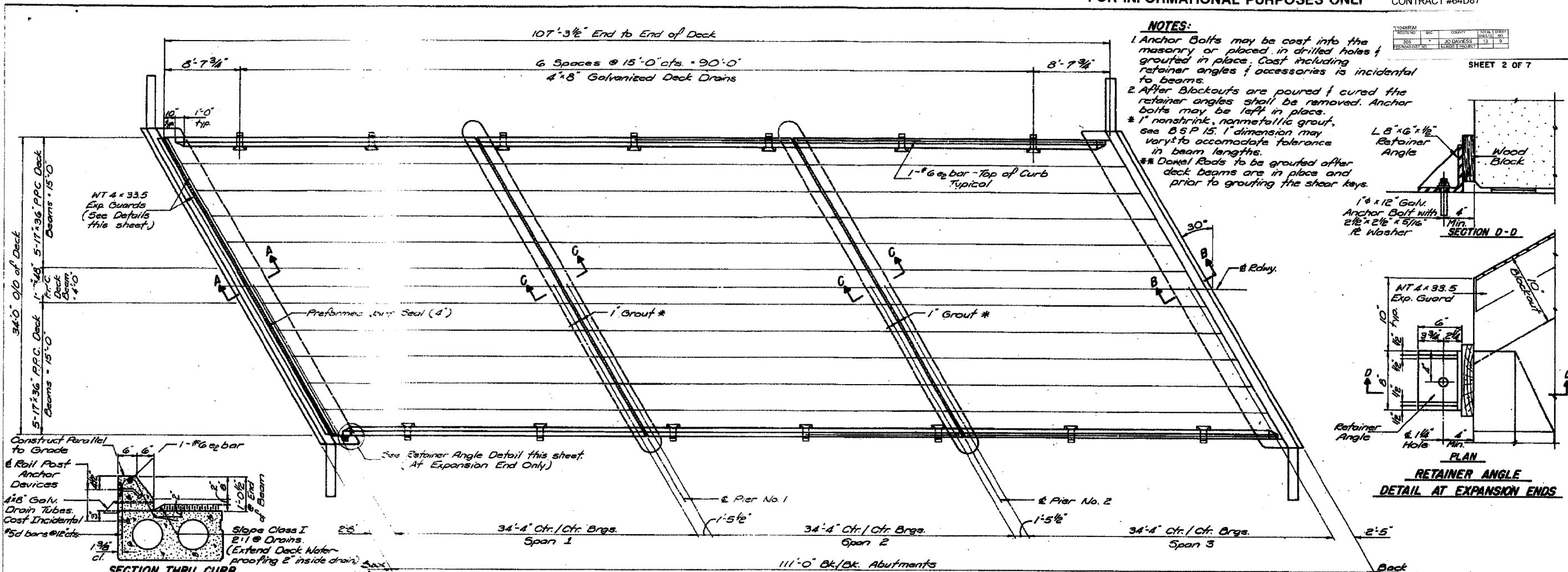
PRECAST PRESTRESSED UNITS      CAST IN PLACE CONCRETE  
 $f'_c = 5,000$  p.s.i.       $f'_c = 3,500$  p.s.i.  
 $f_{ti} = 4,000$  p.s.i.       $f_y = 60,000$  p.s.i. (Comp.)  
 $f_s = 270,000$  p.s.i. (1/2" Strands)       $n = 9$   
 $f_{si} = 189,000$  p.s.i. (1/2" Strands)

LOADING HS 20-44

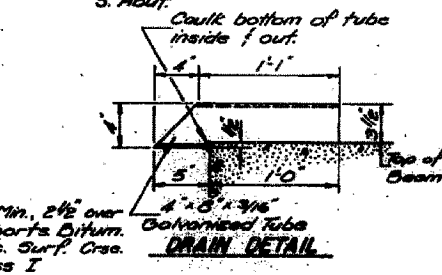
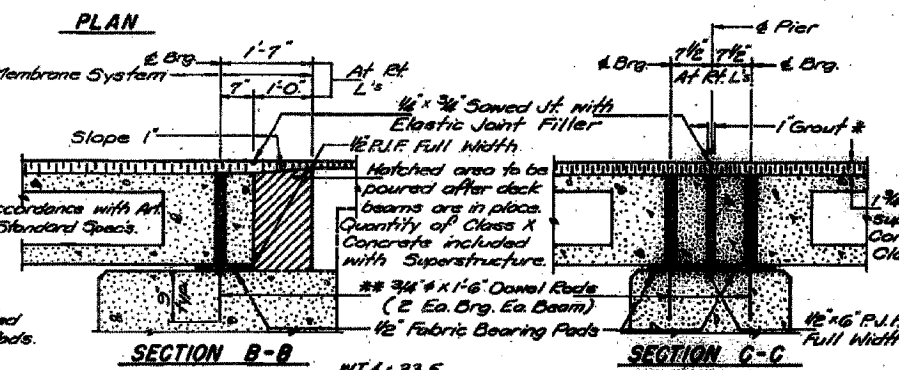
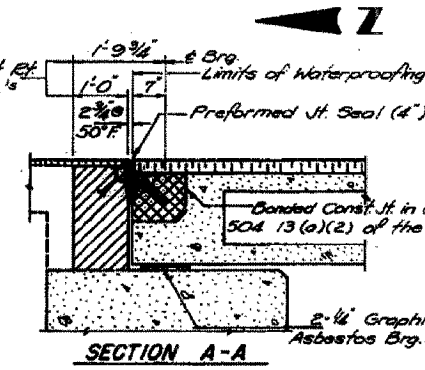
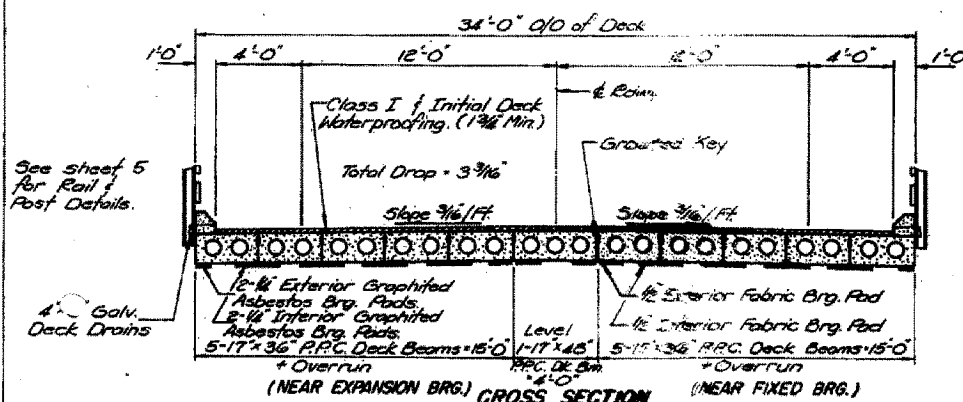
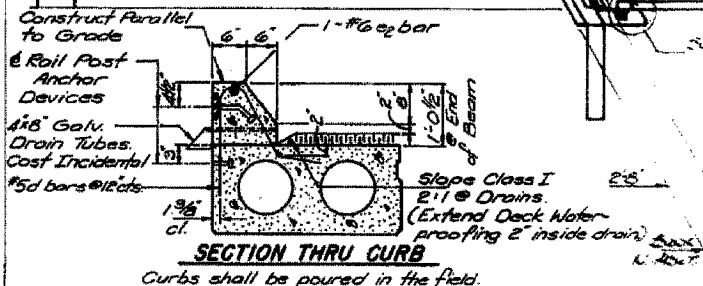
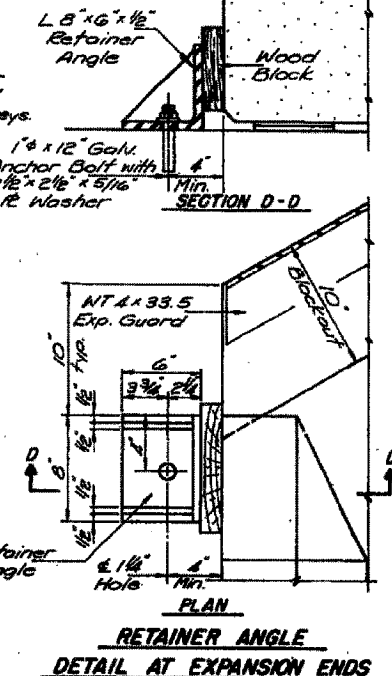
Design Specifications: 1977 A.A.S.H.T.O.; 1973, 1979; 1980 Interim Specifications (Allow 25 p.s.f. for future wearing surface)

K. M. S. E. NO. 1891 / 0028





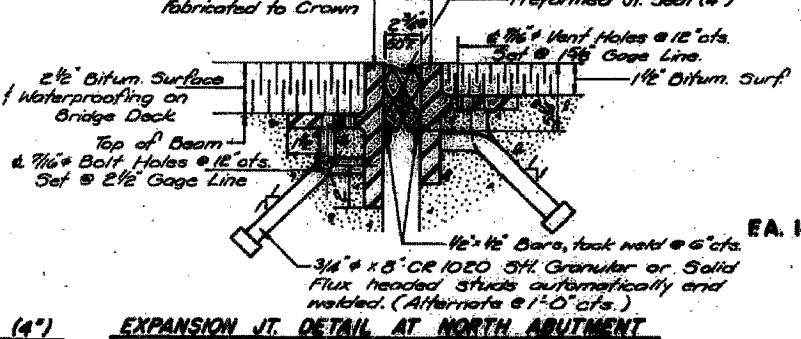
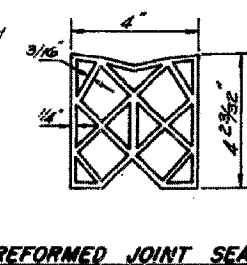
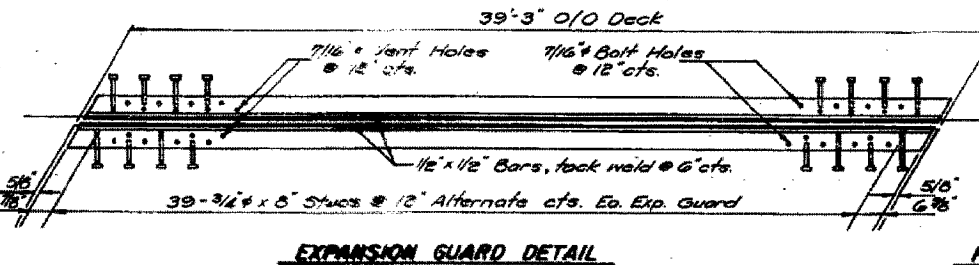
**NOTES:**  
 1 Anchor Bolts may be cast into the masonry or placed in drilled holes & grouted in place. Cast including retainer angles & accessories is incidental to beams.  
 2 After Blockouts are poured & cured the retainer angles shall be removed. Anchor bolts may be left in place.  
 \* 1" nonshrink, nonmetallic grout, see B 5 P 15. 1" dimension may vary to accommodate tolerance in beam lengths.  
 \*\* Dowel Rods to be grouted after deck beams are in place and prior to grouting the shear keys.



**BILL OF MATERIAL**

Bar No.	Size	Length	Shape
#2	1E	6'	18'-8"
#3	6	5'	20'-4"
#4	17 x 36 P.P.C. Dk. Beams	Sq. Ft.	3210
#5	17 x 48 P.P.C. Dk. Beams	Sq. Ft.	488
#6	Reinforcement Bars	Lbs.	470
#7	Class X Concrete	Cu. Yds.	13.2
#8	Preformed Jt. Seal (4")	Ln. Ft.	40

DESIGNED: V. S. N.  
 CHECKED: D. H. G.  
 DRAWN: R. A. W.  
 CHECKED: K. L. F.



**SUBSTRUCTURE DECK**  
 FA. 18 OVER TRIBUTARY TO APPLE RIVER  
 SECTION 104-BR  
 JO DAVISS COUNTY  
 STATION 125 + 71.00

H. M. S. & S. INC. 1981/008

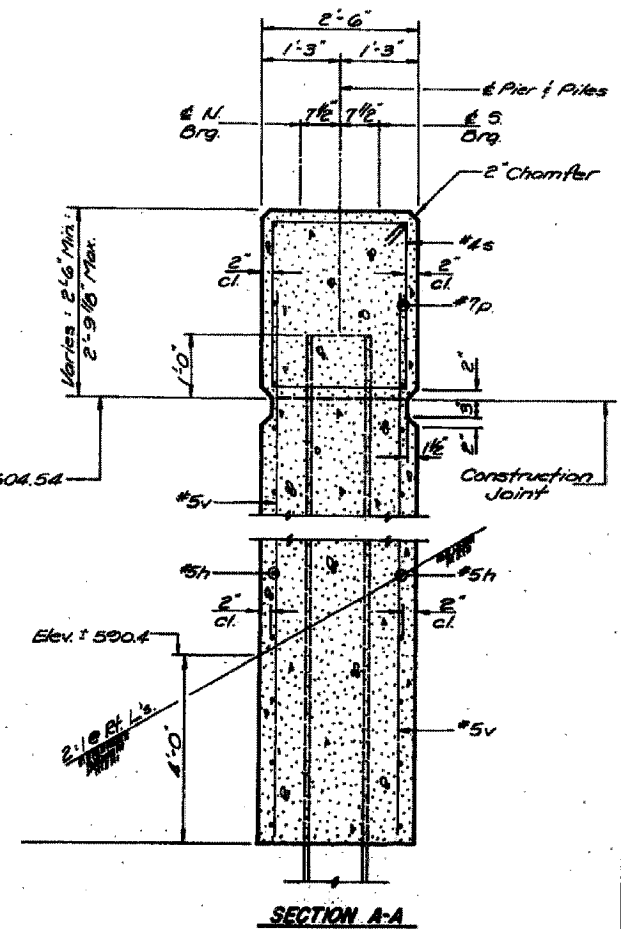
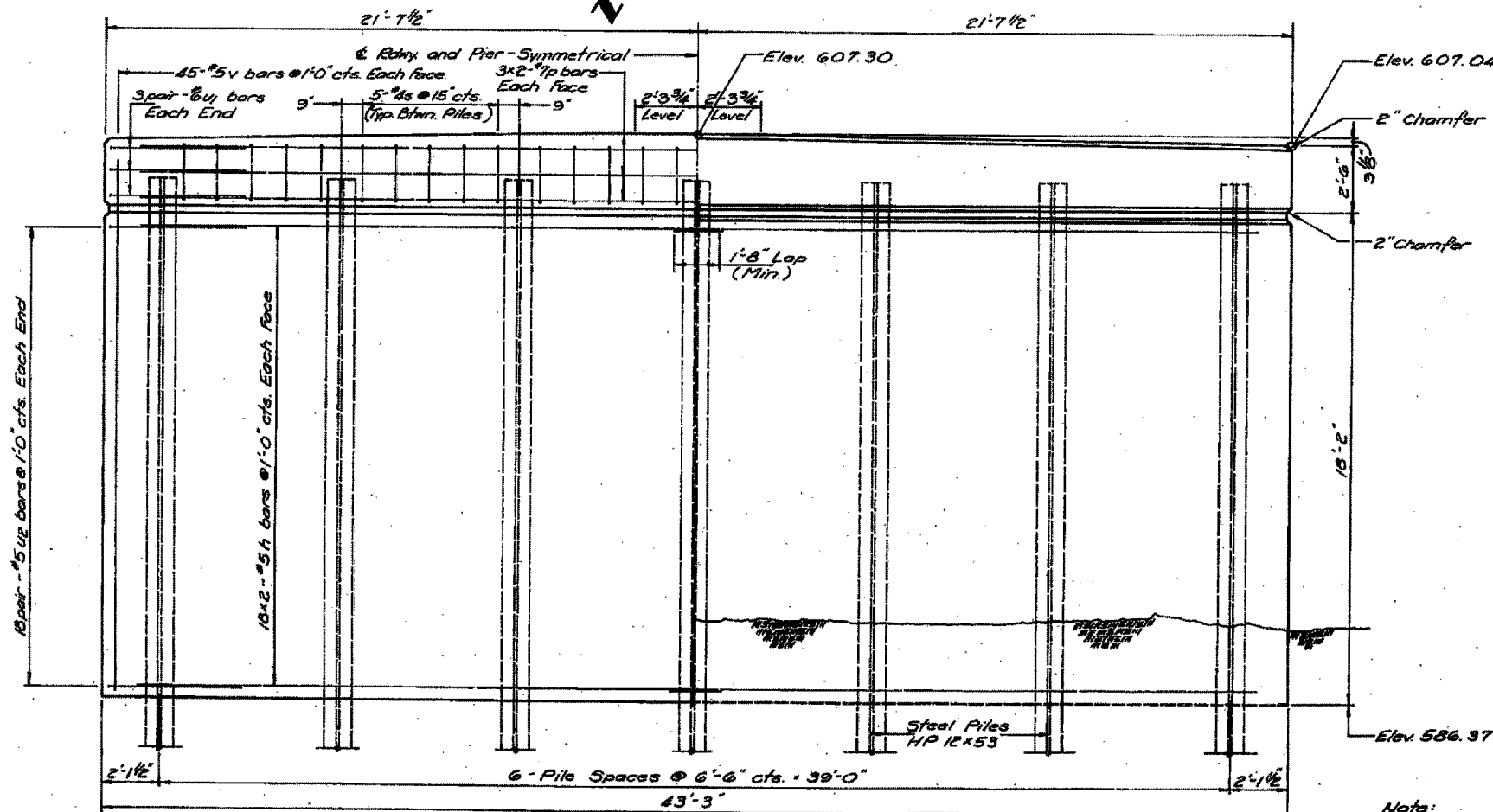
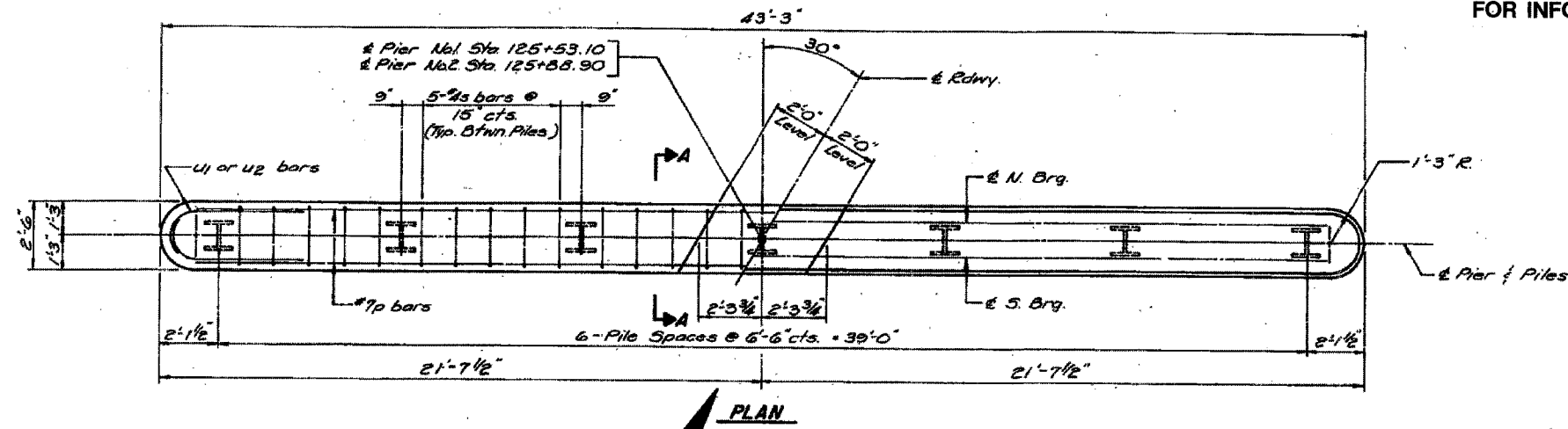




FOR INFORMATIONAL PURPOSES ONLY

NO.	DATE	BY	REVISION
1		J.D. DAVISS	
2			

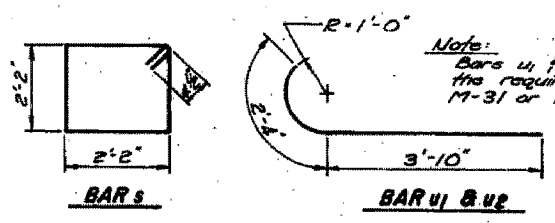
SHEET 6 OF 7



Bar	Size	Length	Spacing	Notes
h	#5	21'-3"		
p	#2	10'-9"		
s	#4	9'-5"		
u1	#5	6'-2"		
u2	#5	6'-2"		
v	#5	19'-9"		
Class X Concrete	C.Y.	762		
Reinforcement Bars	Lbs.	9280		
Steel Piles HP 12x53	L.F.	257		
Test Pile 5H HP 12x53	Each	1		

Note: Bars indicated thus 18x2 #5 etc. indicates 18 lines of bars with 2 lengths per line.

DESIGNED:	V.S.N.
CHECKED:	D.H.C.
DRAWN:	R.A.W.
CHECKED:	K.L.F.



	PILE DATA	
	Pier No. 1	Pier No. 2
Type	5H HP 12x53	5H HP 12x53
Estimated Length	42 Ft.	36 Ft.
Capacity	Refusal	Refusal
Number	6	7
Test Pile	1	

PIER NO. 1 & NO. 2  
 FA. IS OVER BRIDGE TO APPLE RIVER  
 STA. 125+71.00  
 JO DAVISS COUNTY

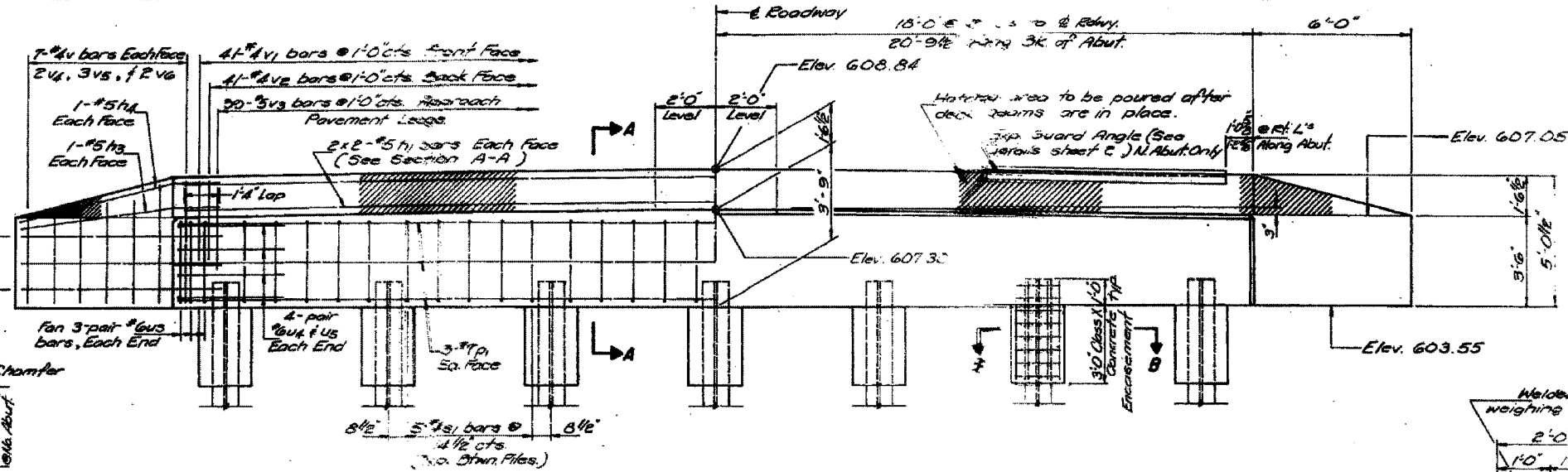


ROUTE NO.	SEC.	COUNTY	TOWNSHIP
306		JO DAVISS	13 13
PROJECT NO.	PROJECT		

**Note:**  
Bend #2, #3, & #4 bars in field.  
Bar #3 shall conform to the requirements of A.A.S.H.T.O. M-31 or M-53, Grade 40.

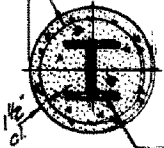
Hatched area to be poured after deck beams are in place. Quantity of Class X Concrete included with Superstructure.

Expansion Guard Angle North Abut. Only (See details sheet E.)



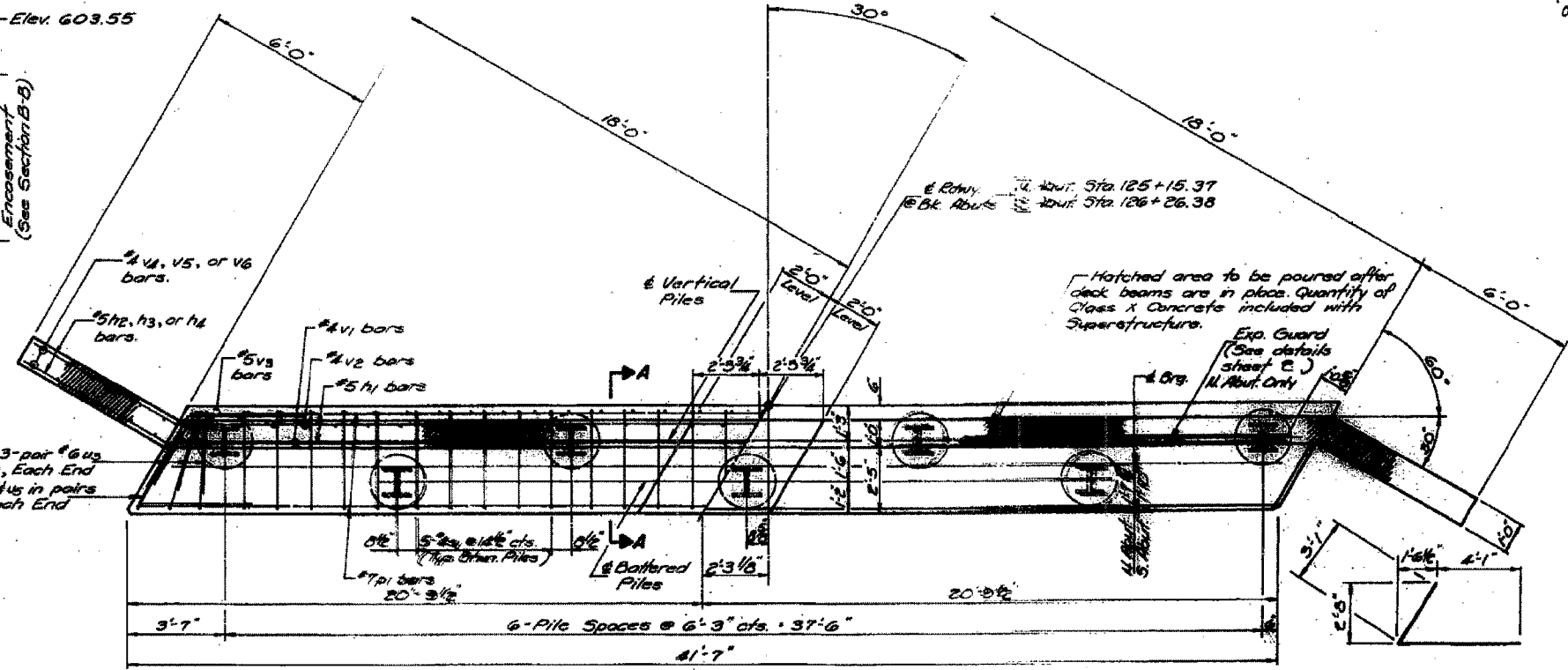
ELEVATION

Welded wire fabric 6x6-W40xW40 weighing 55 #/100 sq. ft. The cost of class X concrete encasement is incidental to the cost of furnishing piles. Forms for encasement may be omitted when soil conditions will permit.



SECTION B-B

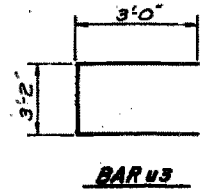
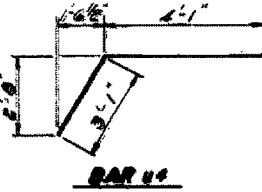
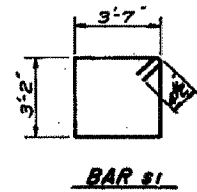
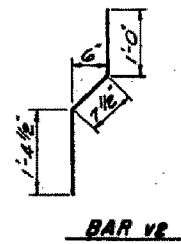
SECTION A-A



PLAN

**Note:**  
Bars indicated thus 2x2-#5 etc. indicates 2 lines of bars with 2 lengths per line.

DESIGNED:	V.S.N.
CHECKED:	D.H.C.
DRAWN:	R.A.W.
CHECKED:	K.L.F.



Type	PILE DATA	
	N. Abut.	S. Abut.
Size	SH HP 12x53	SH HP 12x53
Estimated Length	41 Ft	34 Ft
Capacity	Refusal	Refusal
Number	6	7
Test Pile	1	

NORTH & SOUTH ABUTS.

Bar No.	Size	Length	Shape
#1	#5	21'3"	—
#2	#5	7'6"	—
#3	#5	7'9"	—
#4	#5	8'3"	—
#5	#7	41'3"	—
#6	#6	14'3"	□
#7	#5	5'2"	—
#8	#5	7'2"	—
#9	#5	7'0"	—
#10	#5	3'0"	—
#11	#5	3'3"	—
#12	#5	3'3"	—
#13	#5	2'0"	—
#14	#5	3'0"	—
#15	#5	3'0"	—
#16	#5	3'0"	—
#17	#5	3'0"	—
#18	#5	3'0"	—
#19	#5	3'0"	—
#20	#5	3'0"	—
#21	#5	3'0"	—
#22	#5	3'0"	—
#23	#5	3'0"	—
#24	#5	3'0"	—
#25	#5	3'0"	—
#26	#5	3'0"	—
#27	#5	3'0"	—
#28	#5	3'0"	—
#29	#5	3'0"	—
#30	#5	3'0"	—
#31	#5	3'0"	—
#32	#5	3'0"	—
#33	#5	3'0"	—
#34	#5	3'0"	—
#35	#5	3'0"	—
#36	#5	3'0"	—
#37	#5	3'0"	—
#38	#5	3'0"	—
#39	#5	3'0"	—
#40	#5	3'0"	—
#41	#5	3'0"	—
#42	#5	3'0"	—
#43	#5	3'0"	—
#44	#5	3'0"	—
#45	#5	3'0"	—
#46	#5	3'0"	—
#47	#5	3'0"	—
#48	#5	3'0"	—
#49	#5	3'0"	—
#50	#5	3'0"	—
#51	#5	3'0"	—
#52	#5	3'0"	—
#53	#5	3'0"	—
#54	#5	3'0"	—
#55	#5	3'0"	—
#56	#5	3'0"	—
#57	#5	3'0"	—
#58	#5	3'0"	—
#59	#5	3'0"	—
#60	#5	3'0"	—
#61	#5	3'0"	—
#62	#5	3'0"	—
#63	#5	3'0"	—
#64	#5	3'0"	—
#65	#5	3'0"	—
#66	#5	3'0"	—
#67	#5	3'0"	—
#68	#5	3'0"	—
#69	#5	3'0"	—
#70	#5	3'0"	—
#71	#5	3'0"	—
#72	#5	3'0"	—
#73	#5	3'0"	—
#74	#5	3'0"	—
#75	#5	3'0"	—
#76	#5	3'0"	—
#77	#5	3'0"	—
#78	#5	3'0"	—
#79	#5	3'0"	—
#80	#5	3'0"	—
#81	#5	3'0"	—
#82	#5	3'0"	—
#83	#5	3'0"	—
#84	#5	3'0"	—
#85	#5	3'0"	—
#86	#5	3'0"	—
#87	#5	3'0"	—
#88	#5	3'0"	—
#89	#5	3'0"	—
#90	#5	3'0"	—
#91	#5	3'0"	—
#92	#5	3'0"	—
#93	#5	3'0"	—
#94	#5	3'0"	—
#95	#5	3'0"	—
#96	#5	3'0"	—
#97	#5	3'0"	—
#98	#5	3'0"	—
#99	#5	3'0"	—
#100	#5	3'0"	—

NORTH & SOUTH ABUTMENTS  
F.A. & S. Abutments TO APPLE RIVER  
SECTION 104-BR  
JO DAVISS COUNTY  
STATION 125 + 71.00

NO. 10317 D053