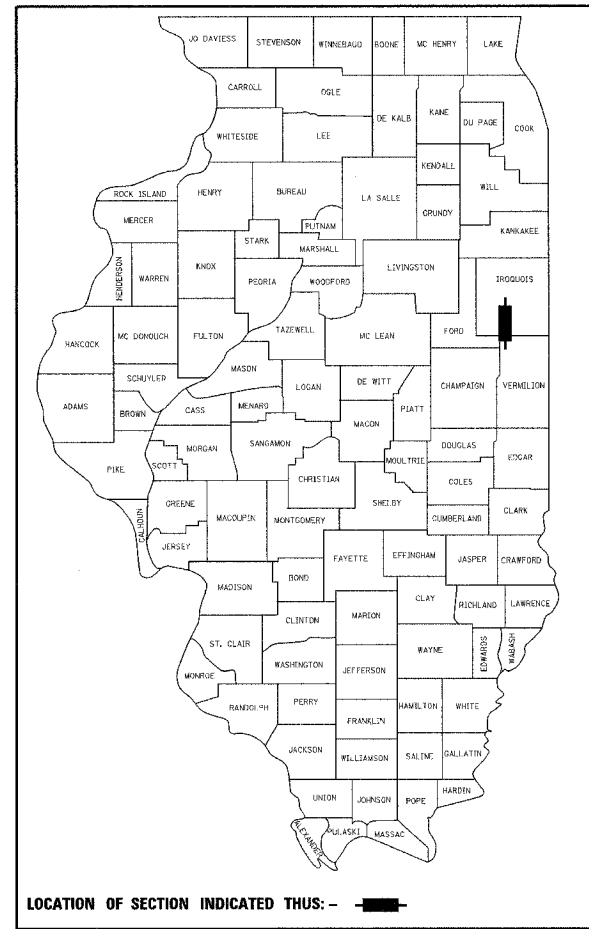


F.A.P. RTE.	SECTION	COUNTY	TOTAL SHEETS	SHEET NO.
840	123 BR-2	IROQUOIS	67	1

CONTRACT NO. 66612  
#6711-68

P-93-053-04  
D-93-013-06



DESIGN DESIGNATION: RURAL MINOR ARTERIAL  
2008 ADT = 2300  
P.V. = 87.2% S.U. = 7% M.U. = 5.8%

STATE OF ILLINOIS  
DEPARTMENT OF TRANSPORTATION  
DIVISION OF HIGHWAYS

SUBMITTED 8/16 20 07  
Deputy Director of Highways, Region Engineer  
October 12, 2007  
Interim Engineer of Design and Environment  
October 12, 2007  
Director of Highways, Chief Engineer

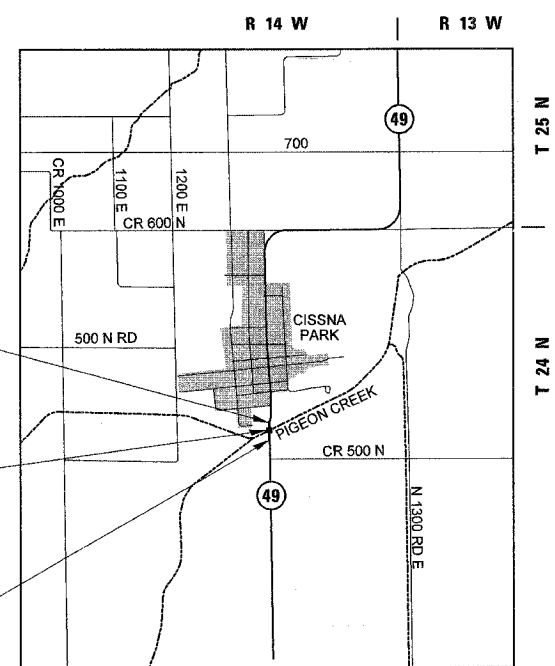
PRINTED BY THE AUTHORITY  
OF THE STATE OF ILLINOIS

STATE OF ILLINOIS  
DEPARTMENT OF TRANSPORTATION  
DIVISION OF HIGHWAYS

PLANS FOR PROPOSED  
HIGHWAY IMPROVEMENT

F.A.P. ROUTE 840 (ILLINOIS ROUTE 49)  
OVER PIGEON CREEK  
SECTION 123 BR-2  
PROJECT ACBRF-0840(056)  
IROQUOIS COUNTY

C-93-013-06  
BRIDGE REPLACEMENT



LOCATION MAP  
NOT TO SCALE

GROSS & NET LENGTH = 1,240 FT. = 0.235 MI.

**rjngroup** License # 184-000813  
200 West Front Street  
Wheaton, IL 60187  
Excellence through Ownership

8-7-07  
David W. Blak  
REGISTERED P.E., STATE OF ILLINOIS  
11-30-07 EXPIRES

STATE OF ILLINOIS  
WILLIAM J. VEGRZYN  
4983 HANOVER PARK IL  
LICENSED STRUCTURAL ENGINEER

8-7-07  
William J. Vegrzyn  
REGISTERED P.E., STATE OF ILLINOIS  
11-30-08 EXPIRES

INDEX OF SHEETS

1. COVER
2. GENERAL NOTES
3. SUMMARY OF QUANTITIES
- 4-5. TYPICAL SECTIONS
6. SCHEDULE OF QUANTITIES
7. ALIGNMENT, TIES & BENCHMARKS
8. TRAFFIC CONTROL CONSTRUCTION STAGING NOTES AND DETAILS STAGE I
- 9-10. TRAFFIC CONTROL CONSTRUCTION STAGING STAGE I
11. TRAFFIC CONTROL CONSTRUCTION STAGING NOTES AND DETAILS STAGE II
- 12-13. TRAFFIC CONTROL CONSTRUCTION STAGING STAGE II
- 14-15. PLAN & PROFILE
16. EROSION CONTROL, LANDSCAPING AND PAVEMENT MARKING PLAN
17. RIGHT-OF-WAY PLAN
- 18-37. BRIDGE PLANS
- 38-44. EXISTING BRIDGE PLANS
- 45-46A. DETAILS
- 47-67. CROSS SECTIONS

HIGHWAY STANDARDS

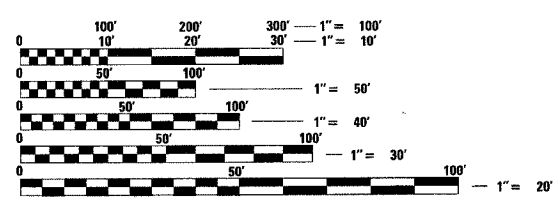
- 000001-04 STANDARD SYMBOLS, ABBREVIATIONS AND PATTERNS
- 280001-03 TEMPORARY EROSION CONTROL SYSTEMS
- 420401-05 BRIDGE APPROACH PAVEMENT
- 515001-02 NAME PLATE FOR BRIDGES
- 601101 CONCRETE HEADWALL FOR PIPE DRAIN
- 606001-03 CONCRETE CURB TYPE B AND COMBINATION CONCRETE CURB AND GUTTER
- 630001-07 STEEL PLATE BEAM GUARDRAIL
- 630201-04 PCC/HMA STABILIZATION AT STEEL PLATE BEAM GUARDRAIL
- 630301-04 SHOULDER WIDENING FOR TYPE 1 (SPECIAL) GUARDRAIL TERMINALS
- 631031-06 TRAFFIC BARRIER TERMINAL TYPE 6
- 635006-02 REFLECTOR AND TERMINAL MARKER PLACEMENT
- 635011-01 REFLECTOR MARKER AND MOUNTING DETAILS
- 667101 PERMANENT SURVEY MARKERS
- 701301-02 LANE CLOSURE, 2L, 2W, SHORT TIME OPERATIONS
- 701321-08 LANE CLOSURE, 2L, 2W, BRIDGE REPAIR WITH BARRIER
- 701326-02 LANE CLOSURE, 2L, 2W, PAVEMENT WIDENING, FOR SPEEDS ≥45 MPH
- 702001-06 TRAFFIC CONTROL DEVICES
- 704001-03 TEMPORARY CONCRETE BARRIER
- 720001 SIGN PANEL MOUNTING DETAILS
- 720006-01 SIGN PANEL ERECTION DETAILS
- 780001-01 TYPICAL PAVEMENT MARKINGS
- 781001-02 TYPICAL APPLICATIONS RAISED REFLECTIVE PAVEMENT MARKERS

STRUCTURE NUMBER 038-0181 (STA 284 + 75)  
REMOVE AND REPLACE THE EXISTING BRIDGE DECK,  
VAULTED ABUTMENT SLABS, APPROACH SLABS AND  
ALL JOINTS UTILIZING STAGED CONSTRUCTION.  
REMOVE AND REPLACE THE EXPANSION BEARINGS  
AT THE VAULTED ABUTMENTS. REPAIR SUBSTRUCTURE  
AND SLOPE WALLS. PERFORM ALL NECESSARY  
ROADWAY WORK TO COMPLETE THE BRIDGE REPAIRS,  
INCLUDING GUARDRAIL REMOVAL AND REPLACEMENT  
AND SHOULDER WIDENING AT ALL FOUR QUADRANTS  
OF THE BRIDGE.

END IMPROVEMENT  
STA 289 + 50

SECTION 123 BR-2  
SN 038-0181 (EXISTING)  
038-0217 (PROPOSED)  
BRIDGE REPLACEMENT

BEGIN IMPROVEMENT  
STA 277 + 10



FULL SIZE PLANS HAVE BEEN PREPARED USING STANDARD  
ENGINEERING SCALES. REDUCED SIZED PLANS WILL NOT  
CONFORM TO STANDARD SCALES. IN MAKING MEASUREMENTS  
ON REDUCED PLANS, THE ABOVE SCALES MAY BE USED.

MICROFILMED \_\_\_\_\_  
REEL NUMBER \_\_\_\_\_  
AWARDED \_\_\_\_\_  
RESIDENT ENGINEER \_\_\_\_\_  
AS BUILT CHANGES WERE MADE  
ON THE FOLLOWING SHEETS \_\_\_\_\_

J.U.L.I.E.  
JOINT UTILITY LOCATION INFORMATION FOR EXCAVATION  
1-800-892-0123

DISTRICT 3 NO. (815) 434-6131  
PROJECT ENGINEER: JOE KANNEL  
UNIT CHIEF: MICHELE LINDEMANN  
TOWNSHIP: PIGEON GROVE

CONTRACT NO. 66612