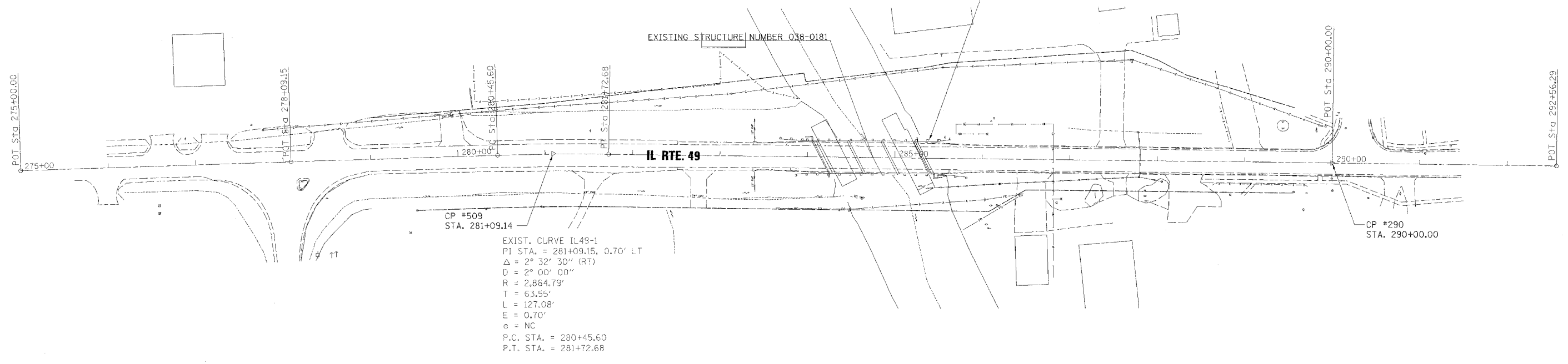


F.A.P. RTE.	SECTION	COUNTY	TOTAL SHEETS	SHEET NO.
840	123 BR-2	IROQUOIS	67	7
FED. ROAD DIST. NO. 7 ILLINOIS		FED. AID PROJECT		

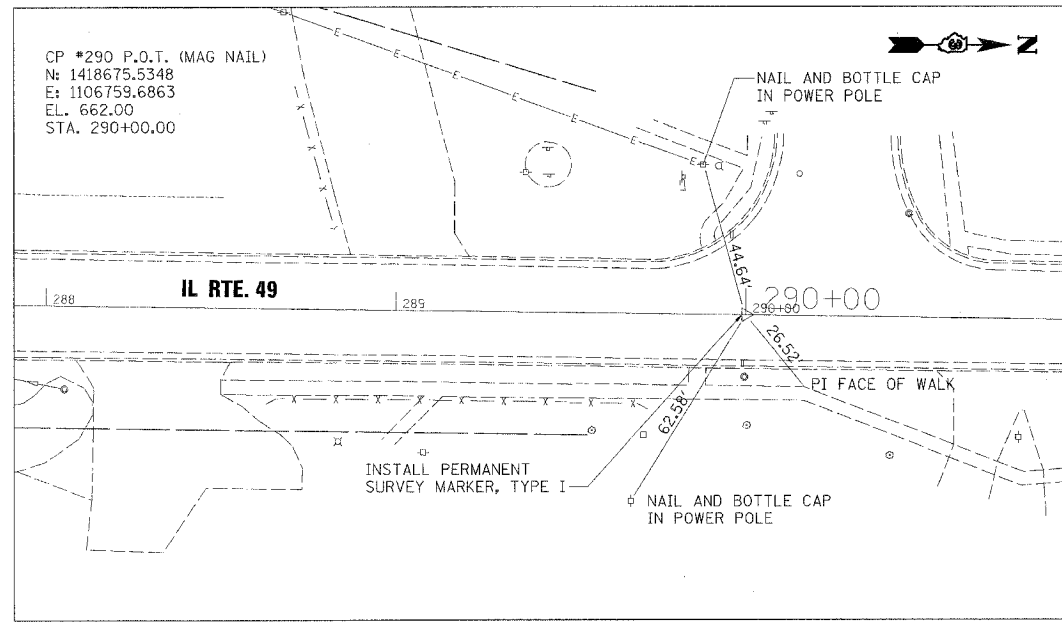
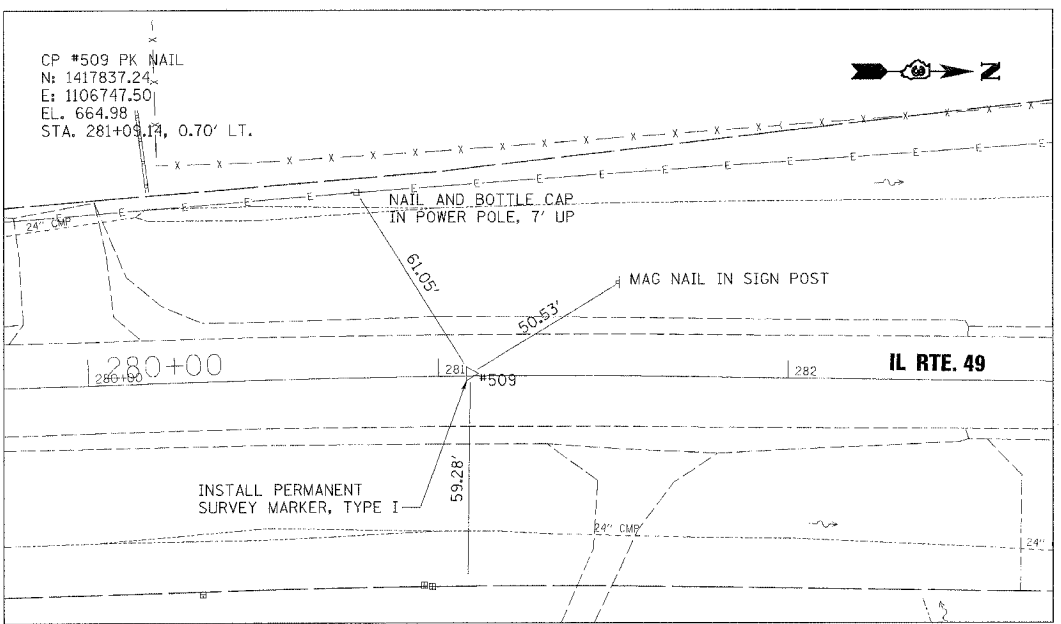
CONTRACT NO. 66612

BENCHMARK: STA. 285+25.78, 18.5' LT  
BRASS MONUMENT ON TOP OF N.W.  
WINGWALL AT BRIDGE ELEV. 666.03



CP #509  
STA. 281+09.14

EXIST. CURVE IL49-1  
PI STA. = 281+09.15, 0.70' LT  
 $\Delta = 2^\circ 32' 30''$  (RT)  
 $D = 2^\circ 00' 00''$   
 $R = 2,864.79'$   
 $T = 63.55'$   
 $L = 127.08'$   
 $E = 0.70'$   
 $e = NC$   
P.C. STA. = 280+45.60  
P.T. STA. = 281+72.68



PLOT SCALE: 1"=50'  
 PLOT TIME: 8:36:48 AM  
 PLOTTED BY: JTRCBB  
 ANI2022070004\design\202207\_Align & Ties.dwg  
 MODEL NAME: Default

 Excellence through Ownership 200 West Front Street Wheaton, IL 60187	REVISIONS		ILLINOIS DEPARTMENT OF TRANSPORTATION F.A.P. ROUTE 840 (IL-49)  <b>ALIGNMENT, TIES &amp; BENCHMARKS</b>  SCALE: 1"=50' DATE: AUGUST 7, 2007 DRAWN BY: JMC CHECKED BY: DWB
	NAME	DATE	