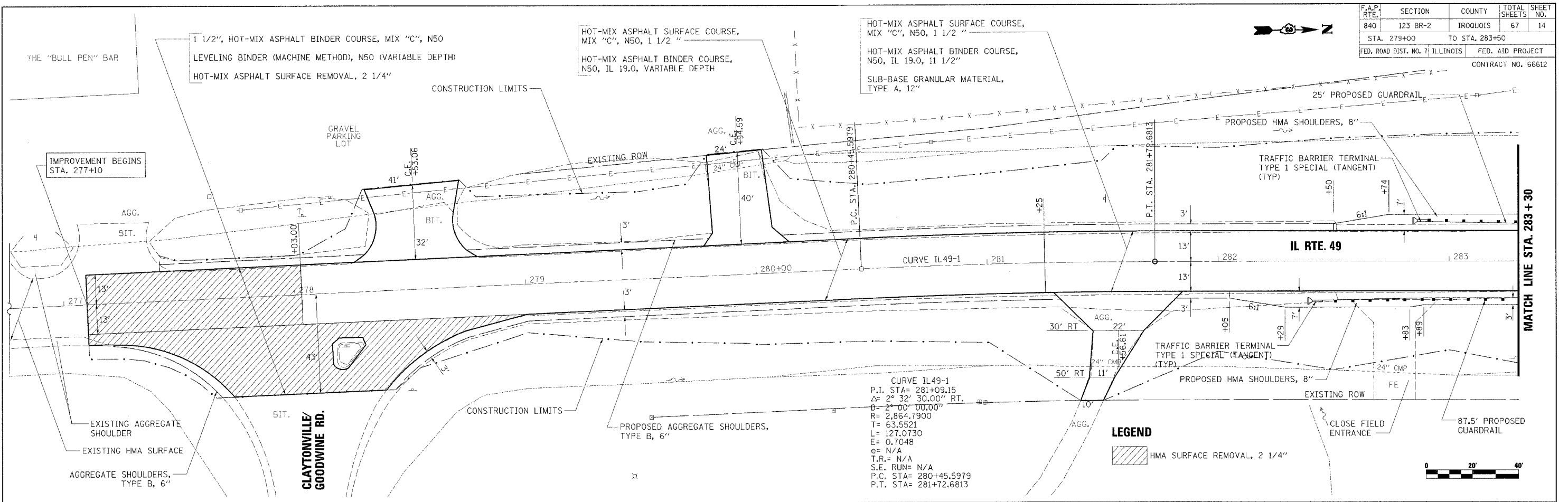
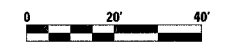


F.A.P. RTE.	SECTION	COUNTY	TOTAL SHEETS	SHEET NO.
840	123 BR-2	IROQUOIS	67	14
STA. 279+00		TO STA. 283+50		
FED. ROAD DIST. NO. 7		ILLINOIS		FED. AID PROJECT
CONTRACT NO. 66612				



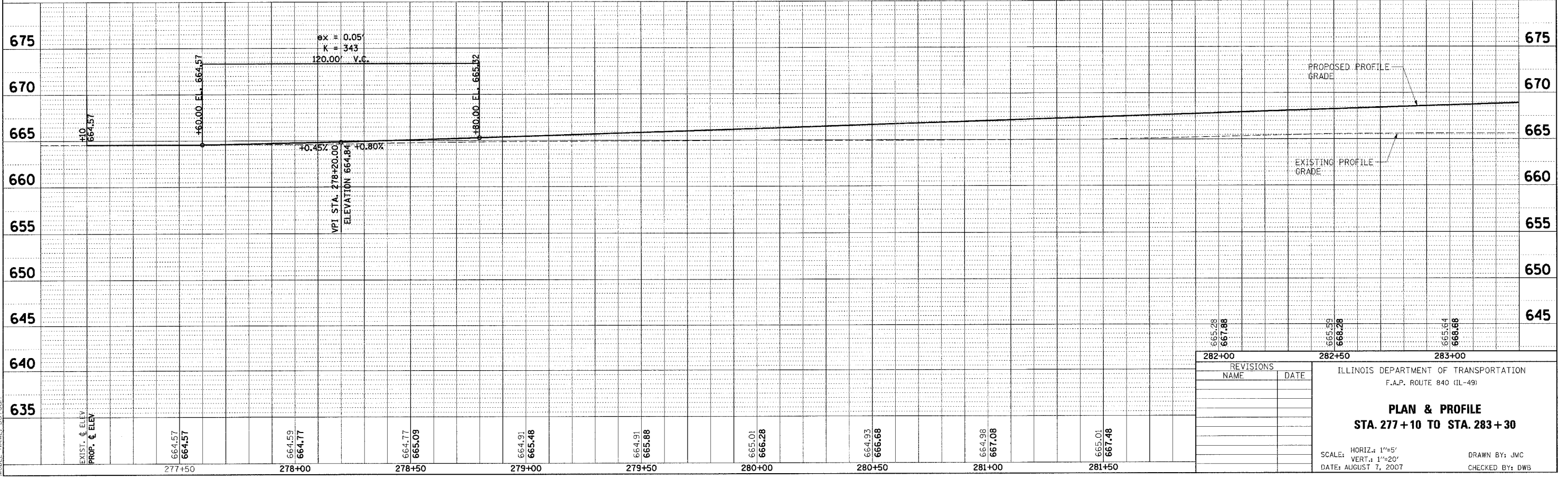
CURVE IL 49-1
 P.I. STA= 281+09.15
 Δ= 2° 32' 30.00" RT.
 R= 2,864.7900
 T= 63.5521
 L= 127.0730
 E= 0.7048
 e= N/A
 T.R.= N/A
 S.E. RUN= N/A
 P.C. STA= 280+45.5979
 P.T. STA= 281+72.6813

LEGEND
 HMA SURFACE REMOVAL, 2 1/4"



PLAN	SURVEYED	BY	DATE
	NOTED		
	CHECKED		
	DATE		

PROFILE	SURVEYED	BY	DATE
	NOTED		
	CHECKED		
	DATE		



REVISIONS		ILLINOIS DEPARTMENT OF TRANSPORTATION	
NAME	DATE	F.A.P. ROUTE 840 (IL-49)	
		PLAN & PROFILE	
		STA. 277 + 10 TO STA. 283 + 30	
SCALE: HORIZ.: 1"=5'		DRAWN BY: JMC	
VERT.: 1"=20'		CHECKED BY: DWB	
DATE: AUGUST 7, 2007			

PLOT SCALE: 1"=20'
 PLOT DATE: 8/7/2007
 PLOT TIME: 3:43:48 PM
 PLOTTER: Ely
 A:\020207\road\Design\200207_Plan_Profile.dwg
 MODEL NAME: DerFault