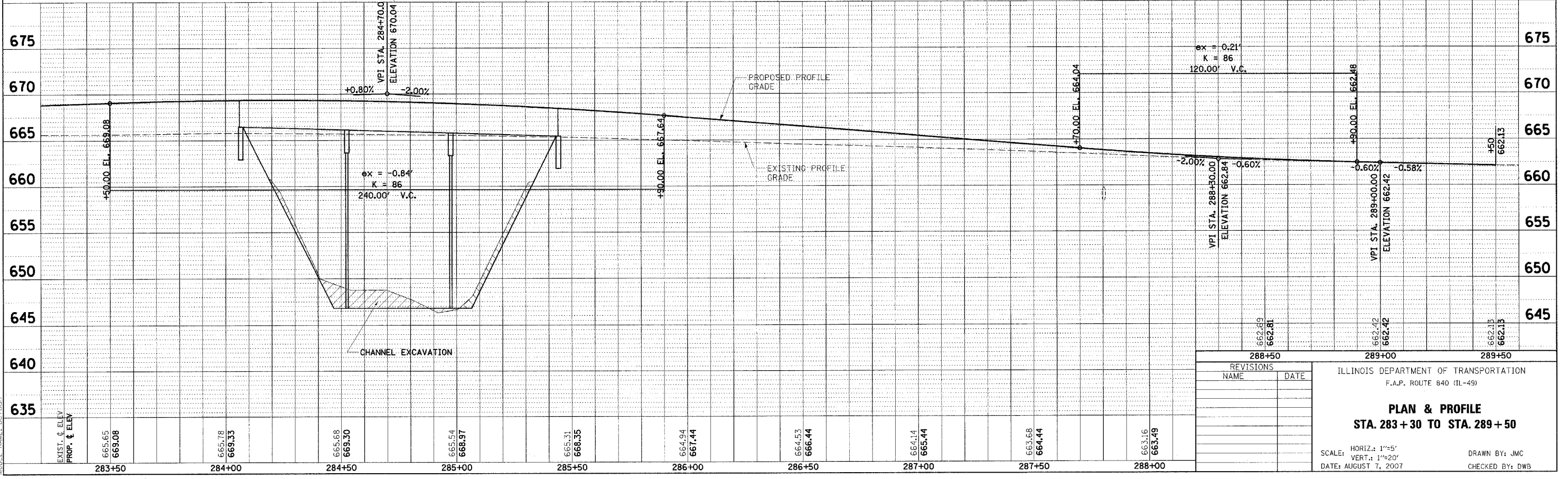
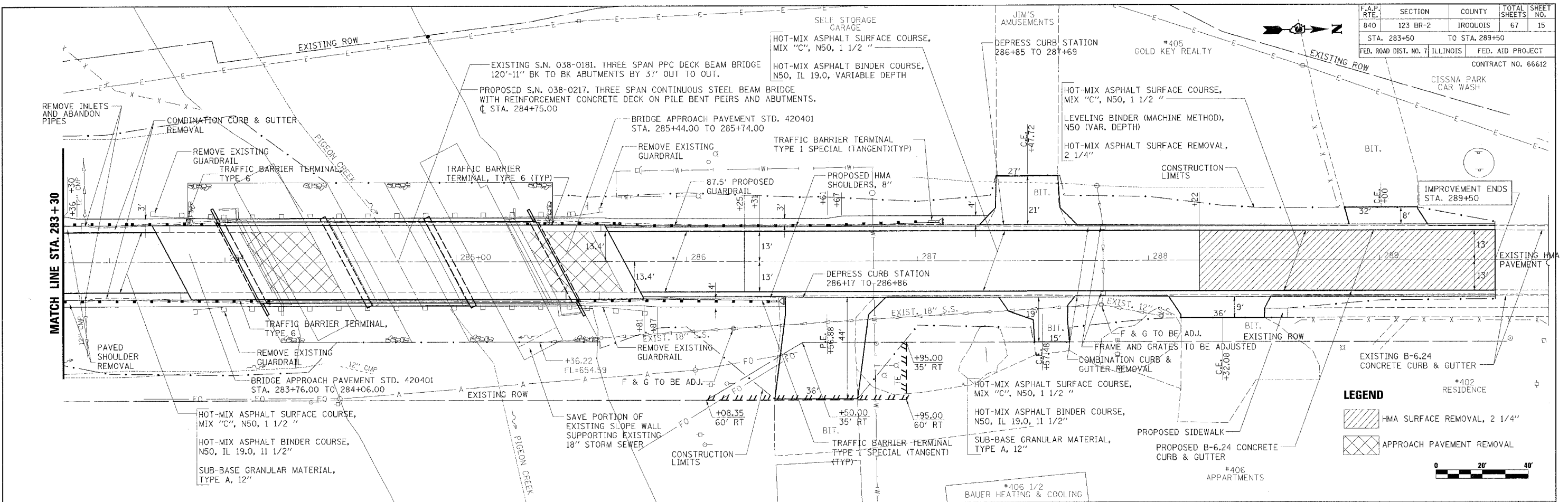


F.A.P. RTE.	SECTION	COUNTY	TOTAL SHEETS	SHEET NO.
840	123 BR-2	IROQUOIS	67	15
STA. 283+50		TO STA. 289+50		
FED. ROAD DIST. NO. 7 ILLINOIS		FED. AID PROJECT		CONTRACT NO. 66612



PLAN	SURVEYED	DATE
	ALIGNED	
	CHECKED	
	BY	
	NO.	

PROFILE	SURVEYED	DATE
	ALIGNED	
	CHECKED	
	BY	
	NO.	

PLOT SCALE: 1/20
 PLOT DATE: 8/7/2007
 PLOT TIME: 8:59:05 AM
 PLOT FILE: AV020207\road\resign\200207_Plan.dwg
 MODEL NAME: Default

REVISIONS	
NAME	DATE

ILLINOIS DEPARTMENT OF TRANSPORTATION
 F.A.P. ROUTE 840 (IL-49)
PLAN & PROFILE
STA. 283+30 TO STA. 289+50
 SCALE: HORIZ.: 1"=5'
 VERT.: 1"=20'
 DATE: AUGUST 7, 2007
 DRAWN BY: JMC
 CHECKED BY: DWB