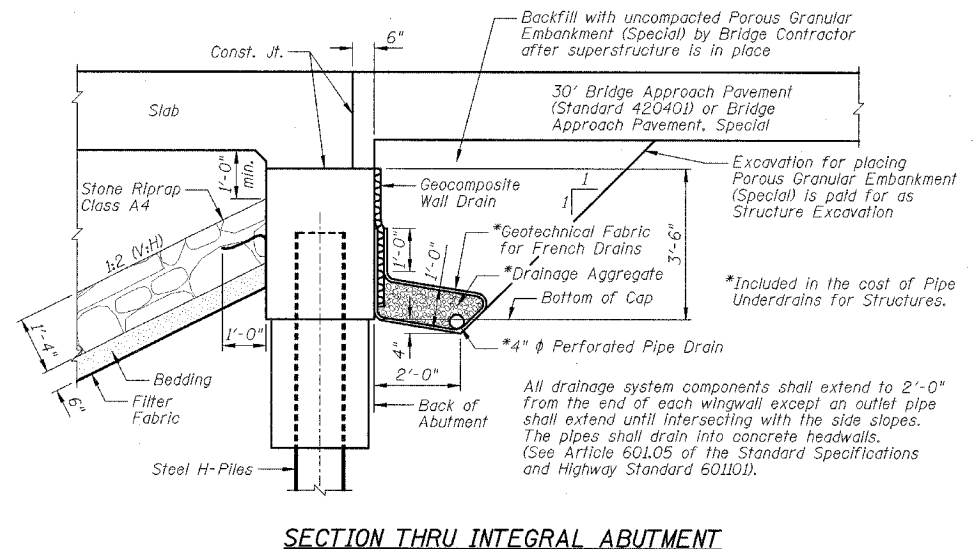
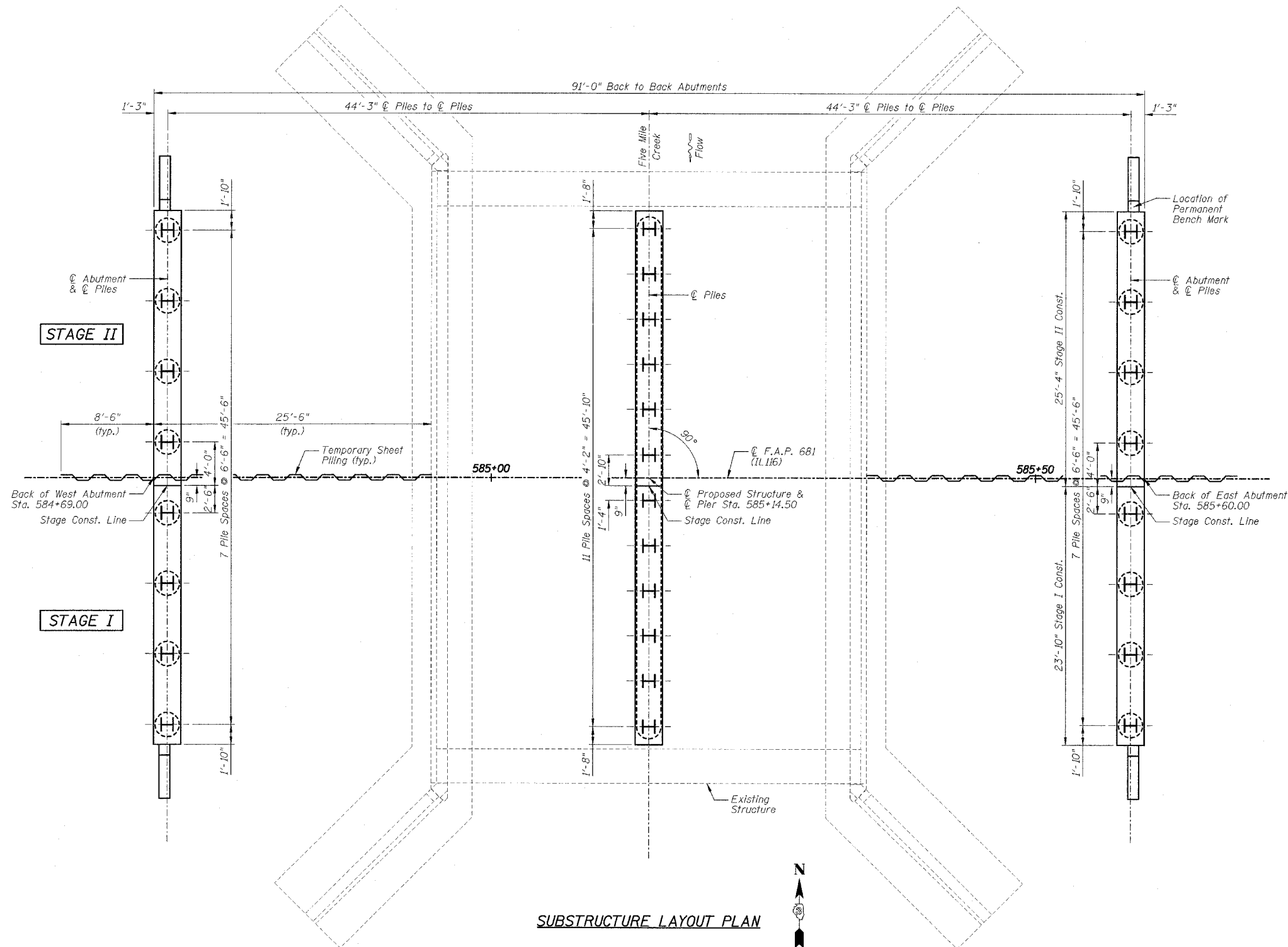


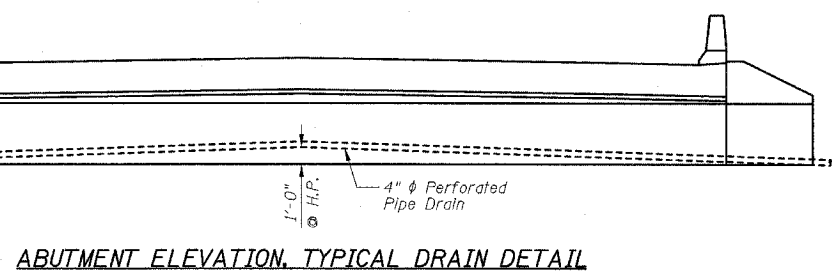
STATE OF ILLINOIS  
DEPARTMENT OF TRANSPORTATION

CONTRACT NO. 66625				
F.A.P. RTE.	SECTION	COUNTY	TOTAL SHEETS	SHEET NO.
681	114BR	LIVINGSTON	43	19
STA.		TO STA.		
FED. ROAD DIST. NO.		ILLINOIS	FED. AID PROJECT	
SHEET NO. B2				
OF 14 SHEETS				



TOTAL BILL OF MATERIAL

ITEMS	UNITS	SUPER	SUB	TOTAL
Channel Excavation	Cu Yd		1800	1800
Porous Granular Embankment, Special	Cu Yd		92	92
Stone Riprap, Class A4	Sq Yd		1205	1205
Filter Fabric	Sq Yd		1205	1205
Removal of Existing Structures	Each	1		1
Structure Excavation	Cu Yd		281	281
Floor Drains	Each	8		8
Concrete Structures	Cu Yd		90.5	90.5
Concrete Superstructure	Cu Yd	329.1		329.1
Bridge Deck Grooving	Sq Yd	440		440
Protective Coat	Sq Yd	535		535
Reinforcement Bars, Epoxy Coated	Pound	57,530	8060	65,590
Bar Splitters	Each	177	50	227
Furnishing Steel Piles HP14x73	Foot		1948	1948
Driving Piles	Foot		1948	1948
Test Pile Steel HP14x73	Each		3	3
Temporary Sheet Piling	Sq Ft		2126	2126
Name Plates	Each	1		1
Geocomposite Wall Drain	Sq Yd		44	44
Pipe Underdrains For Structures 4"	Foot		150	150
Permanent Bench Marks	Each		1	1
Underwater Structure Excavation Protection - Location 1	Each		1	1



GENERAL NOTES:

- 1.) Reinforcement bars shall conform to the requirements of ASTM A 706 Gr. 60 (IL Modified). See Special Provision.
- 2.) Reinforcement bars designated (E) shall be epoxy coated.
- 3.) Layout of slope protection system may be varied to suit ground conditions in the field as directed by the Engineer.
- 4.) The Contractor shall drive test piles to 110% of the nominal required bearing specified in production locations at substructures specified or approved by the Engineer before ordering the remainder of piles.
- 5.) The Contractor shall make allowance for the deflection of forms, shrinkage and settlement of falsework. In addition to allowance for dead load deflection. Forms for deck slab shall be removed prior to placement of bridge approach pavement.
- 6.) Limits of Channel Excavation are within the limits of the existing R.O.W.
- 7.) The cost of removing the existing bituminous overlay shall be included in the cost of "Removal of Existing Structures".

REVISIONS	
NAME	DATE

ILLINOIS DEPARTMENT OF TRANSPORTATION  
GENERAL NOTES, BILL OF MATERIAL,  
SECTION AND SUBSTRUCTURE LAYOUT PLAN  
F.A.P. 681 (IL116) OVER FIVE MILE CREEK  
SECTION 114BR  
LIVINGSTON COUNTY  
STATION 585+14.50  
STRUCTURE NO. 053-0181  
DESIGNED BY: JML DRAWN BY: DJM  
DATE: 02/05/07 CHECKED BY: MSW