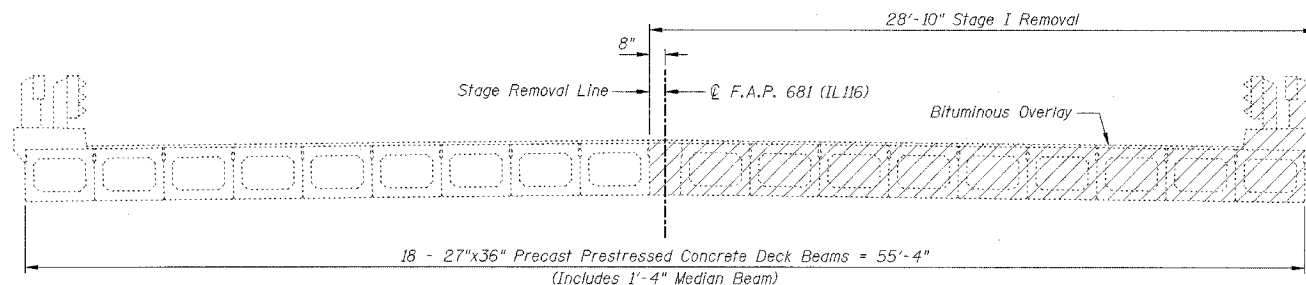


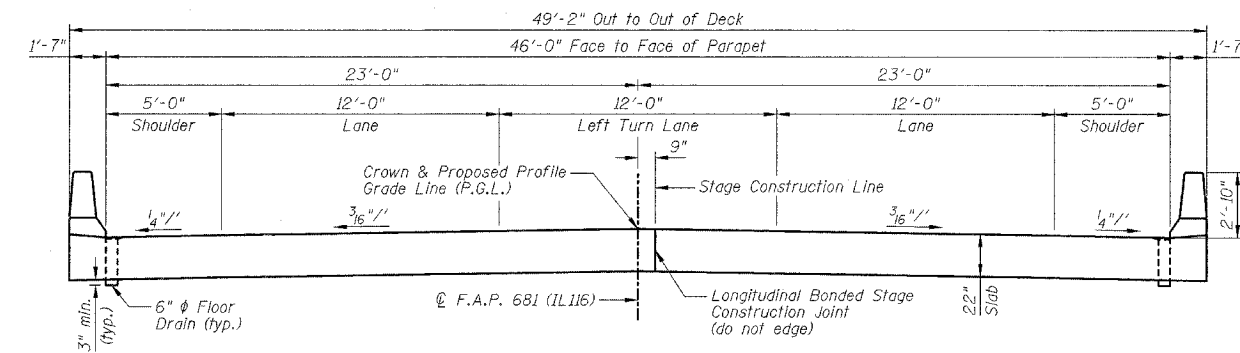
STATE OF ILLINOIS
DEPARTMENT OF TRANSPORTATION

F.A.P. RTE.	SECTION	COUNTY	TOTAL SHEETS	SHEET NO.
681	114BR	LIVINGSTON	43	20
STA.	TO STA.			
FED. ROAD DIST. NO.	ILLINOIS	FED. AID PROJECT		

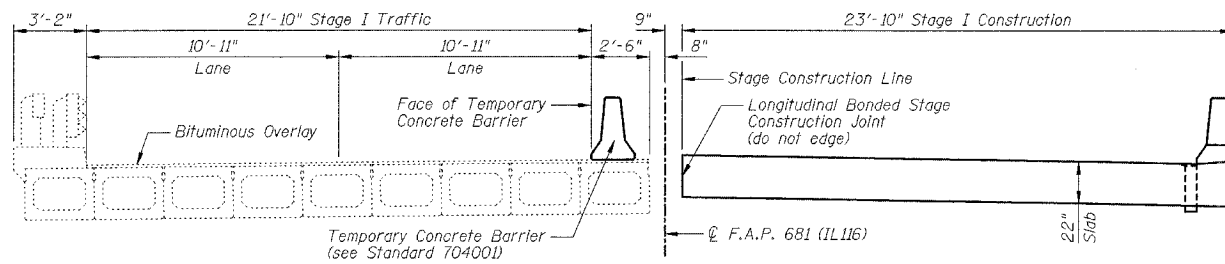
SHEET NO. B3
OF 14 SHEETS



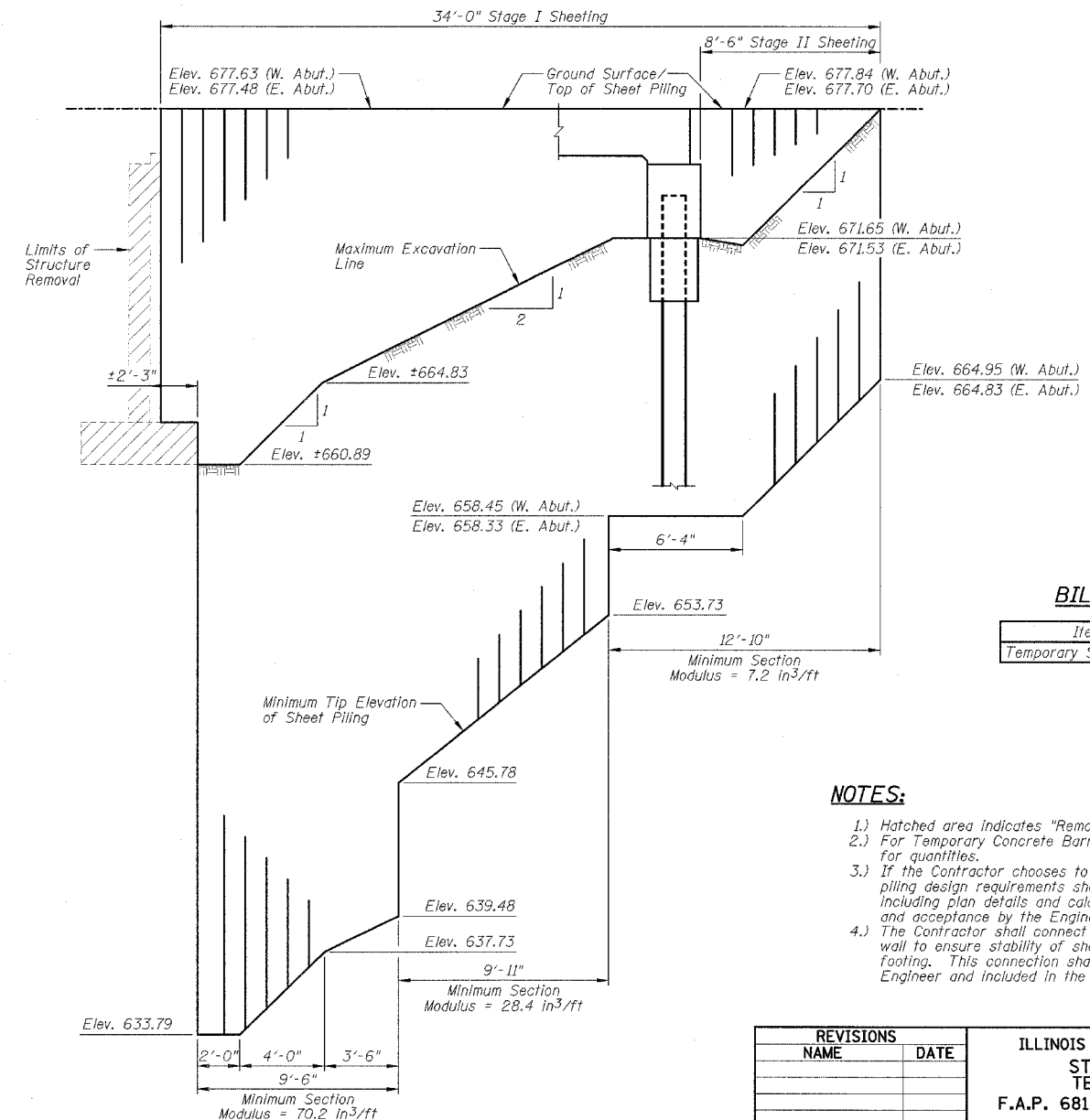
STAGE I REMOVAL
(Looking East)



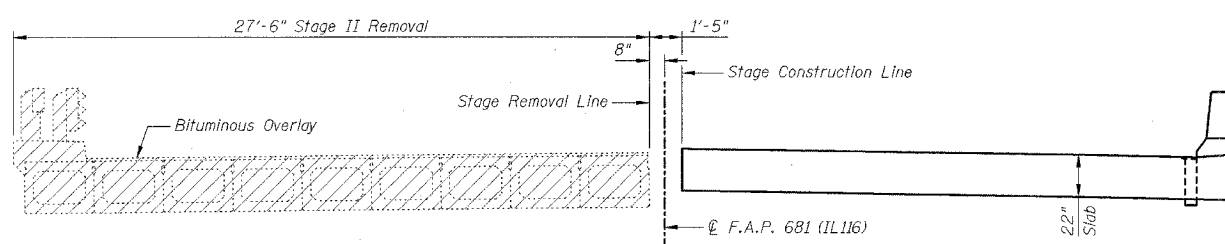
CROSS SECTION
(Looking East)



STAGE I CONSTRUCTION
(Looking East)



TEMPORARY SHEET PILING DETAIL



STAGE II REMOVAL
(Looking East)

BILL OF MATERIAL

Item	Unit	Quantity
Temporary Sheet Piling	Sq. Ft.	2126

NOTES:

- 1.) Hatched area indicates "Removal of Existing Structures".
- 2.) For Temporary Concrete Barrier, see Sheet B4. See Roadway Plans for quantities.
- 3.) If the Contractor chooses to alter the temporary catclerated sheet piling design requirements shown on the plans, a design submittal including plan details and calculations will be required for review and acceptance by the Engineer.
- 4.) The Contractor shall connect the first sheet to the existing abutment wall to ensure stability of sheets driven to the top of the existing footing. This connection shall be reviewed and accepted by the Engineer and included in the cost for "Temporary Sheet Piling".

REVISIONS	
NAME	DATE

ILLINOIS DEPARTMENT OF TRANSPORTATION
STAGE CONSTRUCTION AND
TEMPORARY SHEET PILING
F.A.P. 681 (IL116) OVER FIVE MILE CREEK
SECTION 114BR
LIVINGSTON COUNTY
STATION 585+14.50
STRUCTURE NO. 053-0181
DESIGNED BY: JML DRAWN BY: DJM
DATE: 02/05/07 CHECKED BY: MSW