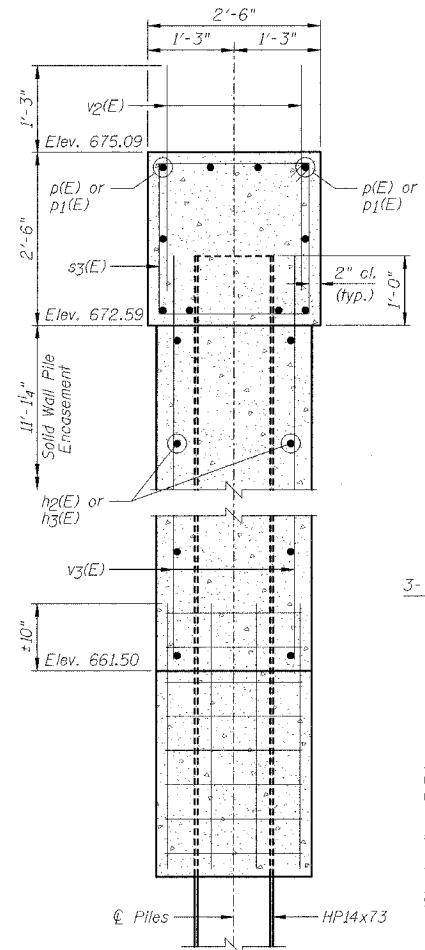


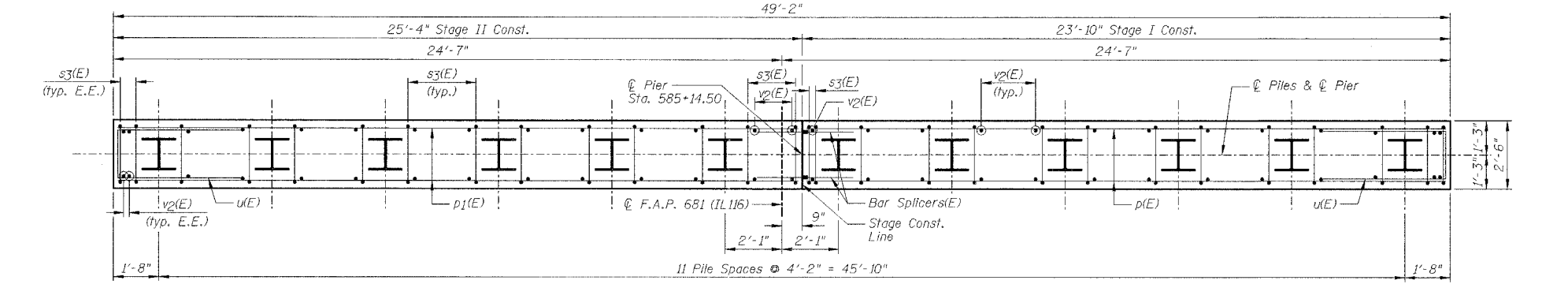
STATE OF ILLINOIS
DEPARTMENT OF TRANSPORTATION

CONTRACT NO. 66625				
F.A.P. RTE.	SECTION	COUNTY	TOTAL SHEETS	SHEET NO.
681	114BR	LIVINGSTON	43	29
STA.		TO STA.		
FED. ROAD DIST. NO.		ILLINOIS FED. AID PROJECT		

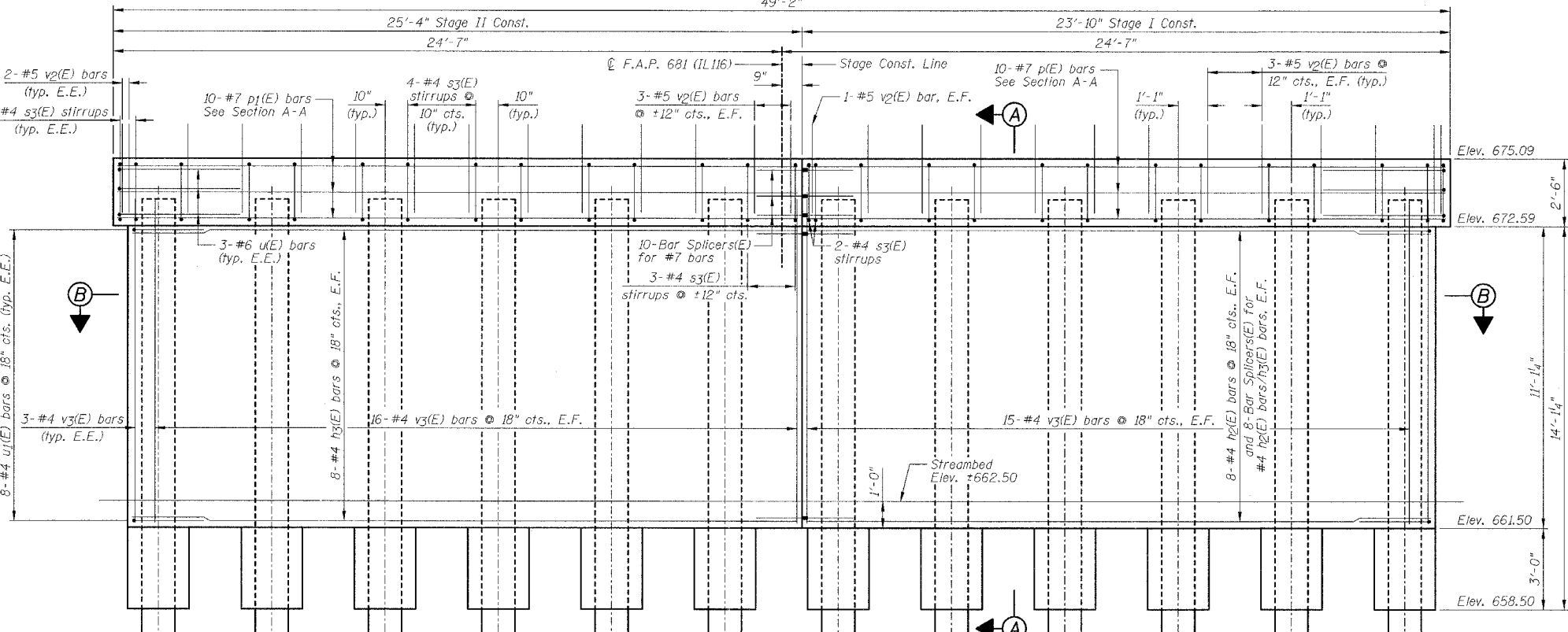
SHEET NO. B12
OF 14 SHEETS



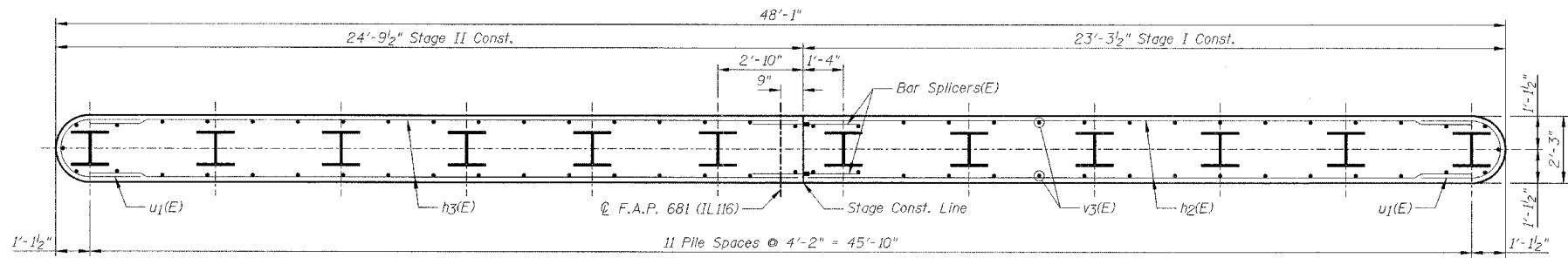
SECTION A-A



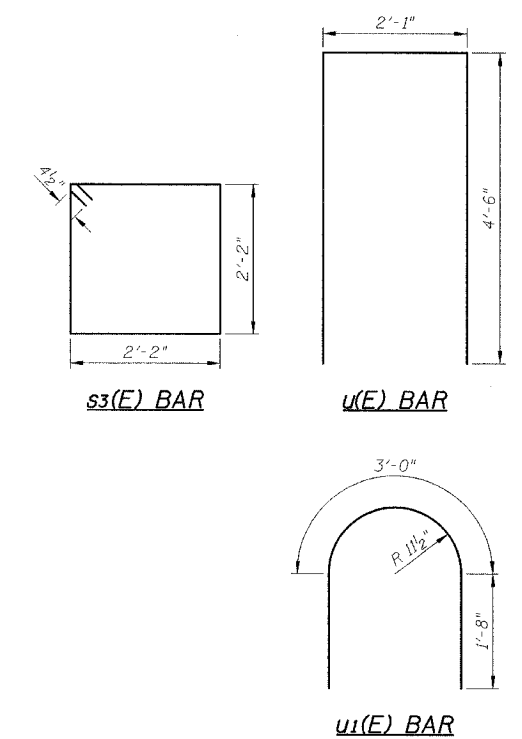
PLAN



ELEVATION
(Looking East)



SECTION B-B



PIER
BILL OF MATERIAL

Bar	No.	Size	Length	Shape
h2(E)	16	#4	22'-7"	—
h3(E)	16	#4	24'-1"	—
p1(E)	10	#7	23'-6"	—
p1(E)	10	#7	25'-0"	—
s3(E)	51	#4	9'-5"	□
u(E)	6	#6	11'-1"	□
u1(E)	16	#4	6'-4"	C
v2(E)	76	#5	3'-3"	—
v3(E)	68	#4	11'-11"	—
Item	Unit	Quantity		
Structure Excavation	Cu Yd	37		
Concrete Structures	Cu Yd	54.7		
Reinforcement Bars, Epoxy Coated	Pound	2780		
Furnishing Steel Piles HP14x73	Foot	968		
Driving Piles	Foot	968		
Test Pile Steel HP14x73	Each	1		
Bar Splicers	Each	26		

PILE DATA:

Type	HP14x73 Steel
No. Req'd.	11+1 Test Pile
Est. Length	88 feet
Nominal Required Bearing	136 kips
Allowable Resistance Available	408 kips

Note: Drive test pile under Stage I.

- NOTES:**
- 1.) Work this sheet with Sheets B2 & B12A.
 - 2.) E.E. denotes Each End & E.F. denotes Each Face.
 - 3.) See Sheet B5 for Bar Splicer Details.

REVISIONS	
NAME	DATE
DJM	9/21/07

ILLINOIS DEPARTMENT OF TRANSPORTATION
PIER
F.A.P. 681 (IL116) OVER FIVE MILE CREEK
SECTION 114BR
LIVINGSTON COUNTY
STATION 585+14.50
STRUCTURE NO. 053-0181
DESIGNED BY: JML
DATE: 02/05/07
DRAWN BY: DJM
CHECKED BY: MSW