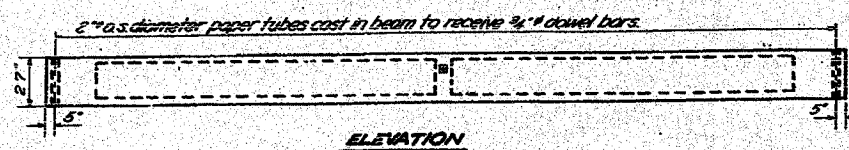
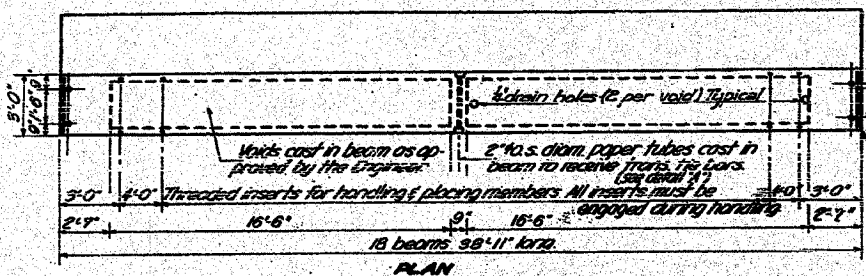
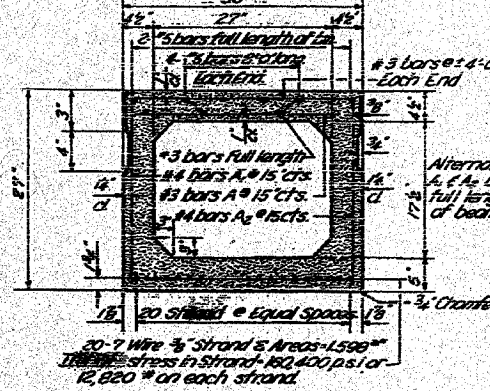
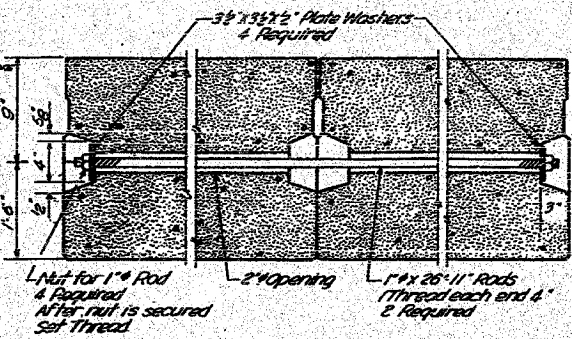


STATE OF ILLINOIS
 DEPARTMENT OF PUBLIC WORKS & BUILDINGS
 DIVISION OF HIGHWAYS

SHEET NO. 2	4 SHEETS
-------------	----------

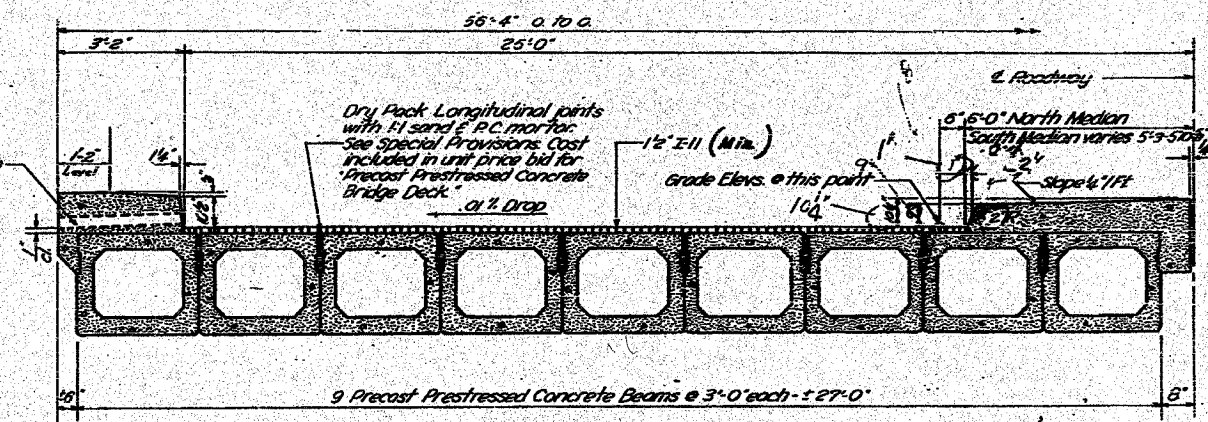
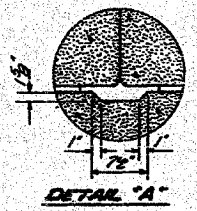
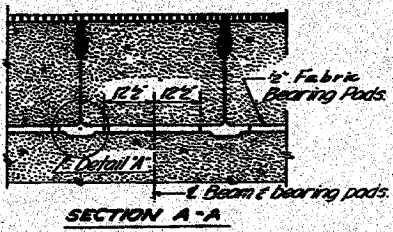
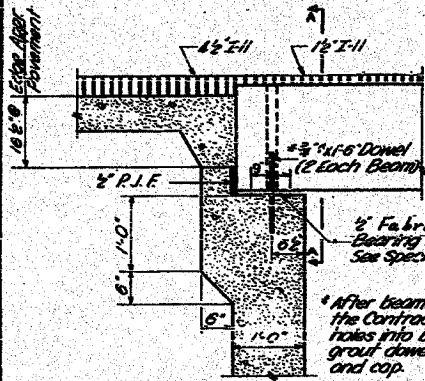


GENERAL NOTES
 For item "Precast Prestressed Concrete Bridge Deck" See Specifications, Specifications
 Strand used as prestressing element shall be non-polymerized, high strength stress-relieved 7 wire strand. The nominal diameter of the strand shall not exceed 3/8" the nominal cross-sectional area shall be 0.09 sq. inches.
 Pockets that receive transverse tie bar on outside beams shall be filled with grout after transverse tie assembly is in place. The 1" Rods in the transverse tie assembly shall be tightened to a snug fit and the threads set.



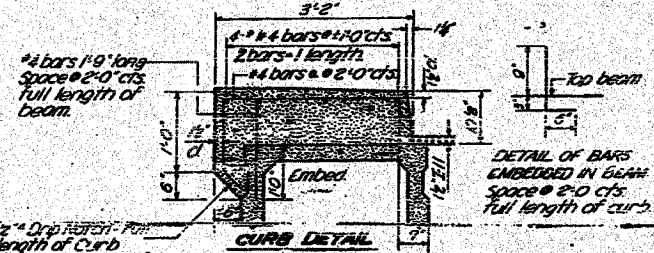
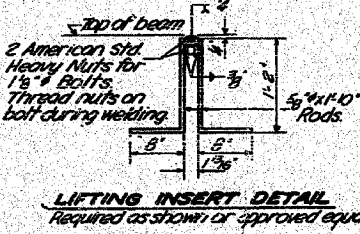
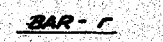
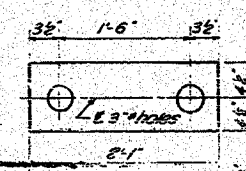
TYPICAL TRANSVERSE TIE ASSEMBLY
 Cost and assembly of Transverse tie is included in unit price bid for Precast Prestressed Concrete Bridge Deck.

TYPICAL SECTION THRU BEAM



HALF CROSS SECTION (Looking East)

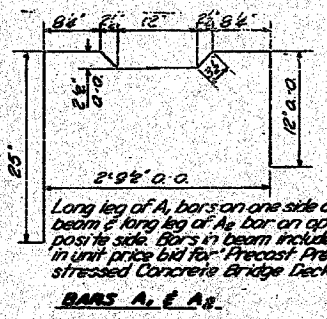
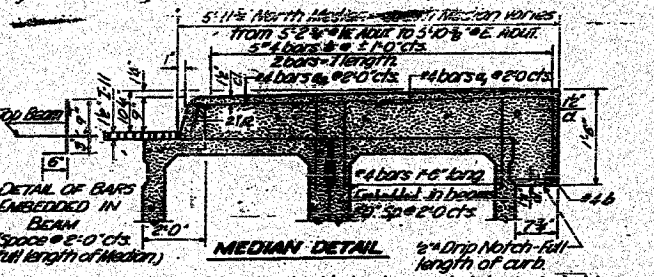
SECTION THRU ABUTMENTS



BILL OF MATERIAL

Bar	No	Size	Length	Shape
a	40	# 4	4'-3"	
a ₁	40	# 4	4'-9"	
a ₂	40	# 4	4'-3"	
b	40	# 4	28'-0"	
d	52	# 5	2'-9"	
e	16	# 5	18'-5"	
f	24	# 8	2'-0"	

Precast Prestressed Concrete Bridge Deck Sq. Ft. 2127
 Class Y Concrete Cu. Yds. 24.7
 Handrail Concrete Cu. Yds. 2.0
 Reinforcement Bars Lbs. 1860
 Name Plates Each 1



DESIGNED: D. J. Cooper
 CHECKED: Charles R. Lunn
 DRAWN: C. E. Koser, J. Putnam
 CHECKED: D. J. Cooper
 EXAMINED: [Signature]
 PASSED: [Signature]
 APPROVED: [Signature]
 Nov. 2, 1959

SUPERSTRUCTURE
 S.B.I. RT. 116 SEC. 114 BR
 LIVINGSTON COUNTY
 STATION 585 + 14.5

Revised 2-6-64 Median curb rev. to match Type B 9.05 Class X Concrete rev. from 20.6 Cu. Yds. to 24.7 Cu. Yds.
 Reinforcement Bars rev. from 1330 Lbs. to 1360 Lbs. H.R.G.

Aug 24, 2007 - 11:05:25 AM
 PLOT NAME = [unclear]
 PLOT SCALE = 20,000.00 X IN.
 USER NAME = [unclear]