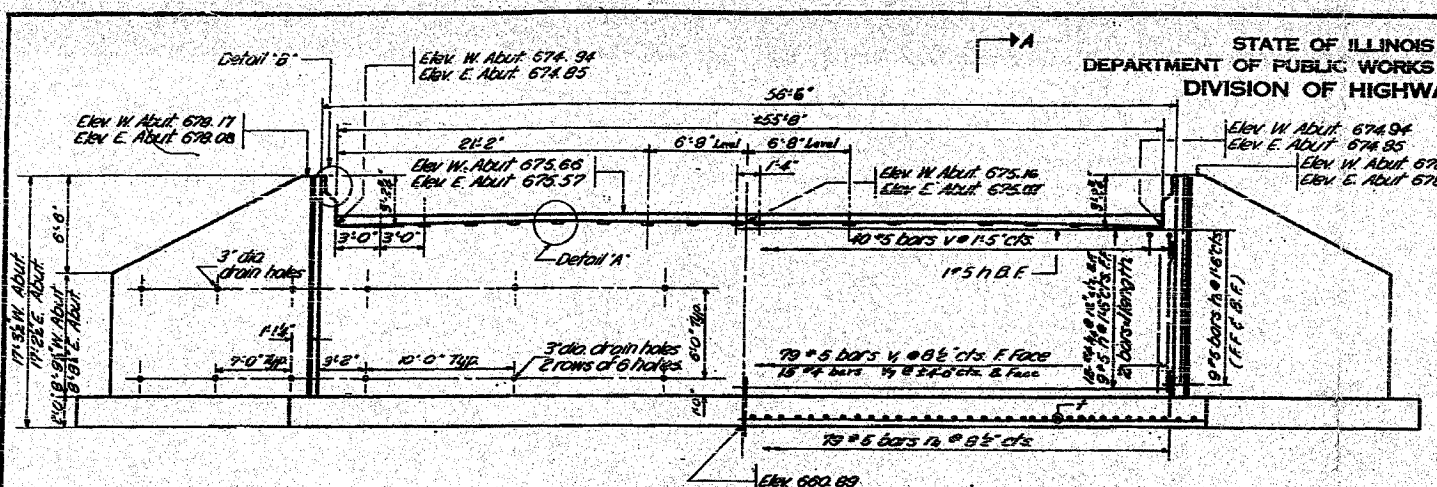


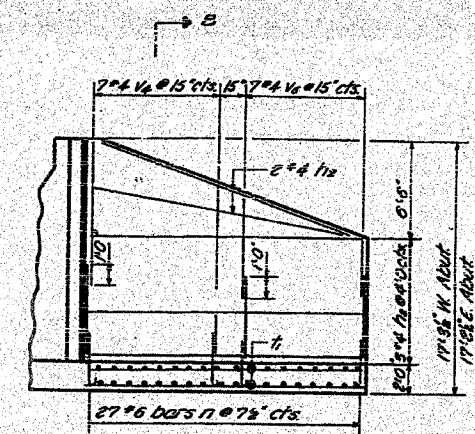
F.A. RTE.	SECTION	COUNTY	TOTAL SHEETS	SHEET NO.
681	114 BR	LIVINGSTON	43	34
STA.		TO STA.		
FED. ROAD DIST. NO.		ILLINOIS FED. AID PROJECT		

STATE OF ILLINOIS
DEPARTMENT OF PUBLIC WORKS & BUILDINGS
DIVISION OF HIGHWAYS

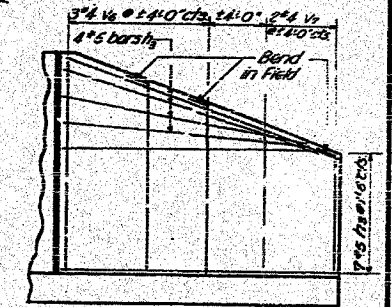
DATE	SECTION	COUNTY	TOTAL SHEETS	SHEET NO.
8-1-59	114 BR	LIVINGSTON	43	34
FED. ROAD DIST. NO. 114 BR				



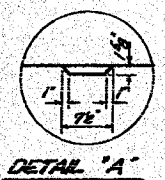
ELEVATION - EAST & WEST ABUTMENTS



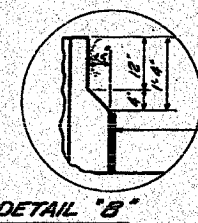
ELEVATION - WING WALL
Showing Steel in Back Face



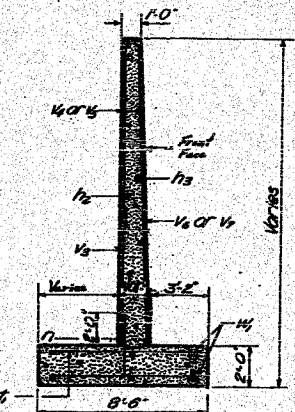
ELEVATION - WING WALL
Showing Steel in Front Face



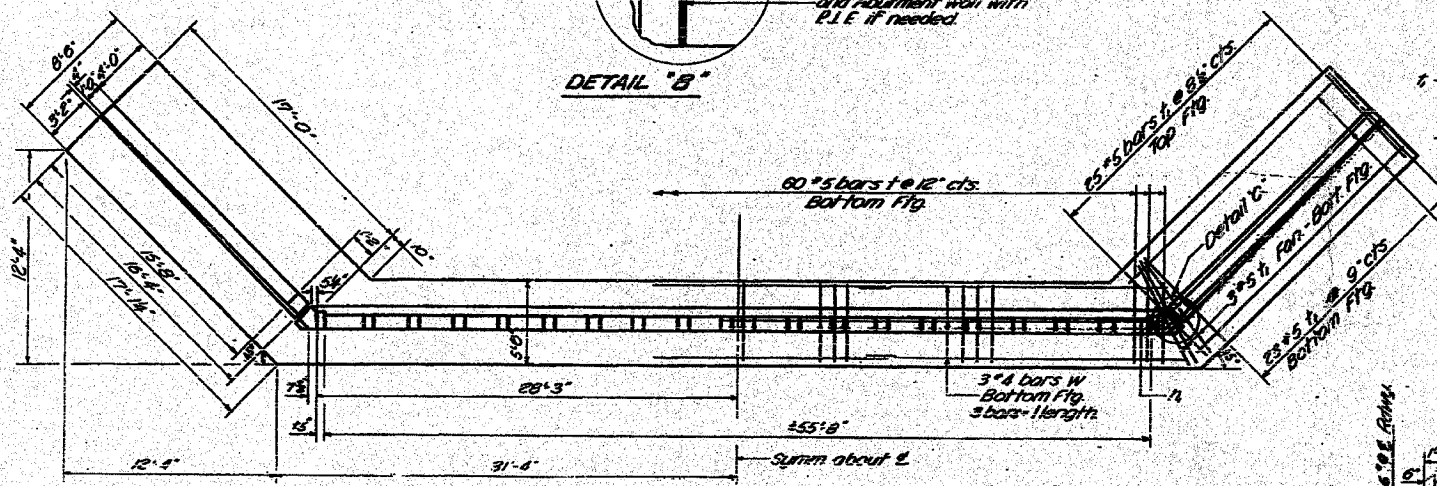
DETAIL 'A'



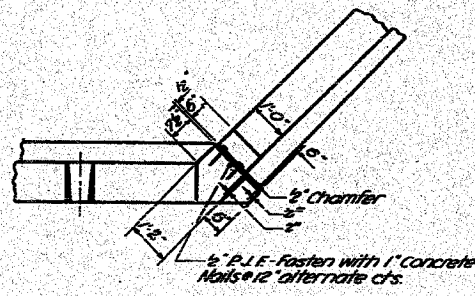
DETAIL 'B'



SECTION B-B



PLAN - EAST & WEST ABUTMENTS



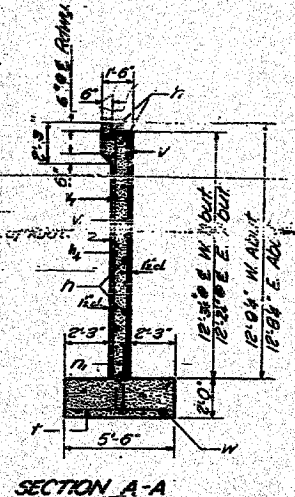
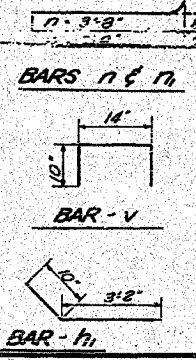
DETAIL 'C' TYPICAL CORNER

BILL OF MATERIAL

Bar	No.	Size	Length	Shape
n	40	# 5	30'-0"	—
n	72	# 5	4'-0"	—
n	20	# 4	16'-0"	—
n	44	# 5	15'-0"	—
n	48	# 4	30'-0"	—
n	108	# 6	4'-4"	—
n	158	# 5	4'-3"	—
f	120	# 5	5'-3"	—
f	204	# 5	8'-3"	—
v	80	# 5	2'-10"	—
v	158	# 5	11'-6"	—
v	16	# 5	15'-0"	—
v	108	# 5	6'-0"	—
v	28	# 4	9'-3"	—
v	28	# 4	6'-0"	—
v	12	# 4	15'-0"	—
v	38	# 4	11'-6"	—
h	18	# 4	21'-6"	—
h	24	# 4	17'-0"	—
Class I Concrete				Cu Yds 1820
Reinforcement Bars				Lbs. 16560
Class A Excavation Re-St. Cu Yds				176
Class B Excavation Re-St. Cu Yds				395

DESIGNED: *Art. Cooper*
CHECKED: *Charles R. Turner*
DRAWN: *D.L. Carter, J. Putnam*
CHECKED: *Charles R. Turner*

EXAMINED: *Nov. 2, 1959*
PASSED: *McDonnell*
APPROVED: *R.H. Bartholomew*



SECTION A-A

ABUTMENT DETAILS
S.B.I. RT. 116 SEC. 114 BR
LIVINGSTON COUNTY
STATION 595 + 14.5

PLOT DATE = Aug 24, 2007 - 11:08:32 AM
PLOT SCALE = 3/4" = 1'-0"
USER NAME = ferguson