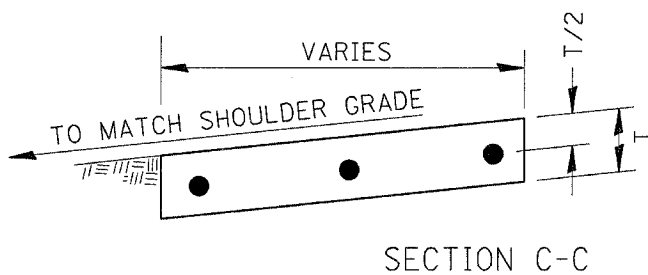
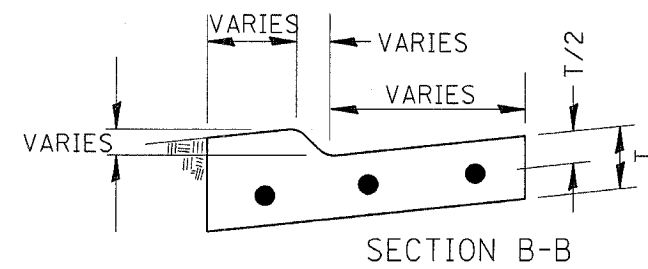
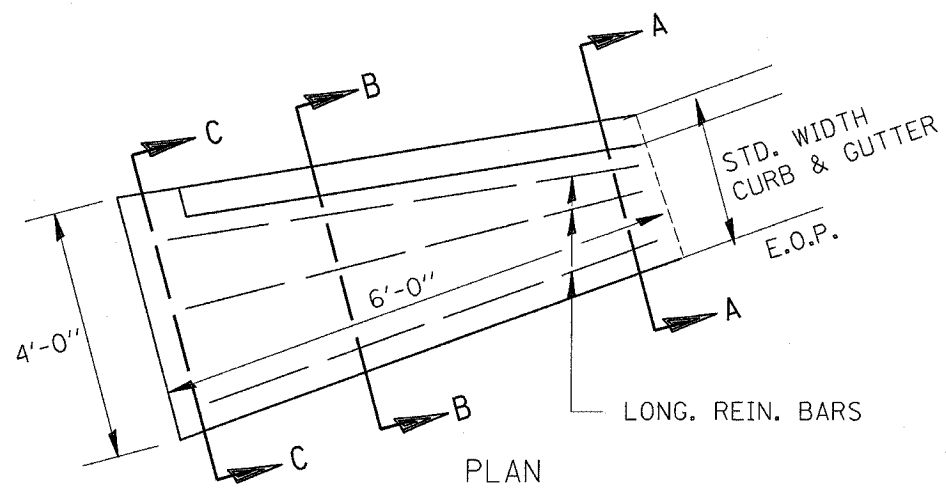
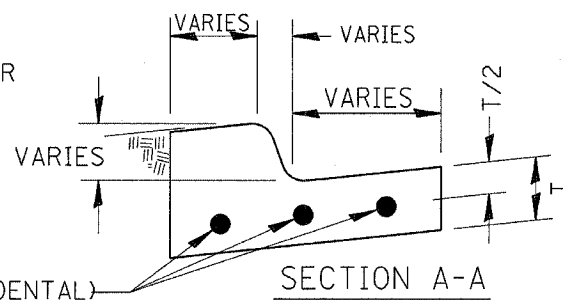
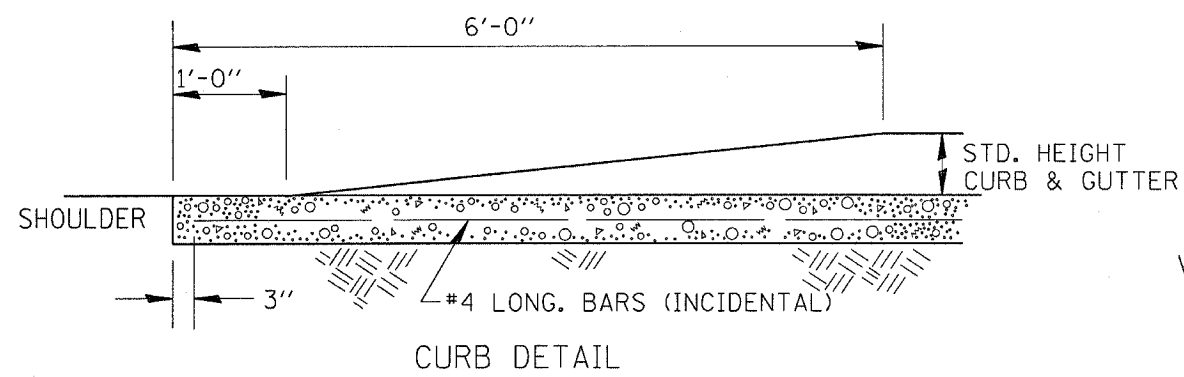
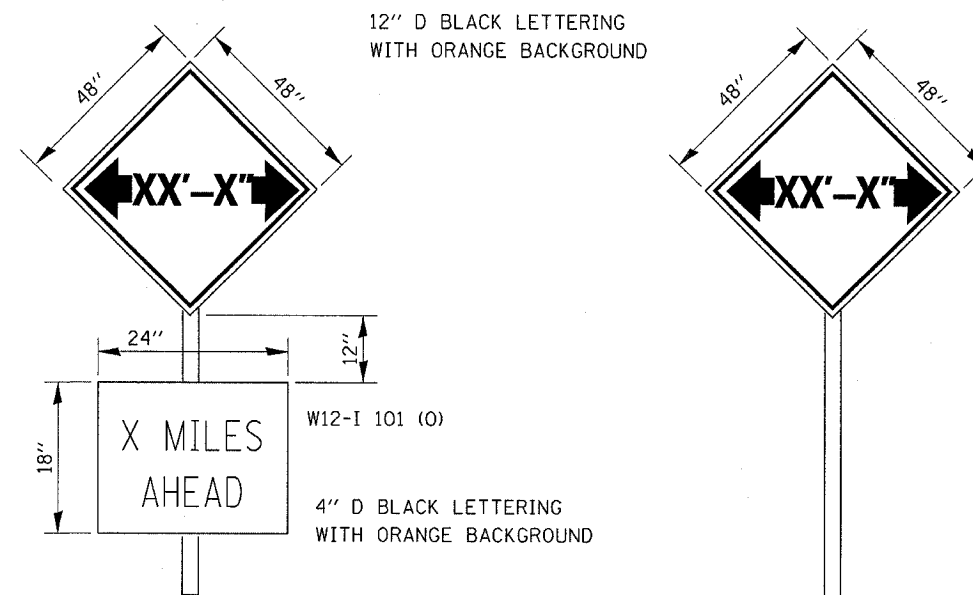


F.A. RTE.	SECTION	COUNTY	TOTAL SHEETS	SHEET NO.
681	114 BR	LIVINGSTON	43	40
STA.		TO STA.		
FED. ROAD DIST. NO.		ILLINOIS	FED. AID PROJECT	



CURB & GUTTER OUTLET, SPECIAL



TO BE POST MOUNTED AS SHOWN ELSEWHERE IN THE PLANS.

THE ENGINEER WILL NOTIFY DISTRICT 3 BUREAU OF OPERATIONS 14 CALENDAR DAYS PRIOR TO INSTALLING ANY TRAFFIC CONTROL DEVICES THAT WILL RESTRICT THE PAVEMENT WIDTH.

THE CONTRACTOR SHALL BE RESPONSIBLE FOR COORDINATING WITH THE ENGINEER TO MEET THIS REQUIREMENT.

COST OF SUPPLYING, INSTALLING, MAINTAINING AND REMOVING WIDTH RESTRICTION SIGNS SHALL BE INCLUDED IN THE COST OF THE TRAFFIC CONTROL AND PROTECTION PAY ITEMS.

WIDTH RESTRICTION SIGNING DETAILS

STAGE I 9' - 6" WIDTH RESTRICTION STAGE II 8' - 6" WIDTH RESTRICTION

SIGNS SHALL BE LOCATED AT THE NORTH, SOUTH, AND WESTBOUND LEGS OF THE IL 47 & IL 116 INTERSECTION AND ONE SIGN AT THE EASTBOUND LEG OF THE IL 116 AND IL 23 INTERSECTION

PLOT DATE = Aug 23, 2007 - 04:05:16 PM
FILE NAME = c:\projects\sep04183\topo.dgn
PLOT SCALE = 20.0000 / 1" / IN.
USER NAME = Ferguson

REVISIONS	
NAME	DATE

ILLINOIS DEPARTMENT OF TRANSPORTATION

DETAILS

SCALE: VERT.
HORIZ.
DATE

DRAWN BY
CHECKED BY