

F.A.I. RTE.	SECTION	COUNTY	TOTAL SHEETS	SHEET NO.
80	06-BHBR	BUREAU	165	16
STA.		TO STA.		
FED. ROAD DIST. NO. 3		ILLINOIS FED. AID PROJECT		

HORIZONTAL CURVE DATA

CURVE EX-WBEX-2

PROP. CURVE EX-WBEX-2  
 PI STA. = 64+89.29  
 N = 1713512.8626  
 E = 2557442.2923  
 $\Delta = 43^\circ 18' 30''$  (RT)  
 D = 8° 21' 24"  
 R = 686.23'  
 T = 272.45'  
 L = 518.24'  
 E = 52.11'  
 S.E. RUN = N/A  
 P.C. STA = 62+16.84  
 N = 1713428.7317  
 E = 2557701.4264  
 P.T. STA = 67+35.08  
 N = 1713751.8286  
 E = 2557311.4348

CURVE EX-WBEX-3

PROP. CURVE EX-WBEX-3  
 PI STA. = 72+15.94  
 N = 1714173.5947  
 E = 2557080.4761  
 $\Delta = 47^\circ 52' 19''$  (LT)  
 D = 12° 53' 43"  
 R = 445.25'  
 T = 197.64'  
 L = 371.24'  
 E = 41.90'  
 S.E. RUN = N/A  
 P.C. STA = 70+18.30  
 N = 1714000.2404  
 E = 2557175.4048  
 P.T. STA = 73+89.54  
 N = 1714219.4751  
 E = 2556888.2311

CURVE EX-FR-1

PROP. CURVE EX-FR-1  
 PI STA. = 73+43.01  
 N = 1714378.9481  
 E = 2557048.9467  
 $\Delta = 49^\circ 53' 59''$  (RT)  
 D = 12° 47' 28"  
 R = 448.87'  
 T = 208.83'  
 L = 390.11'  
 E = 46.20'  
 S.E. RUN = N/A  
 P.C. STA = 71+34.18  
 N = 1714423.1461  
 E = 2556844.8450  
 P.T. STA = 75+24.29  
 N = 1714194.3576  
 E = 2557146.6061

CURVE EX-FR-2

PROP. CURVE EX-FR-2  
 PI STA. = 82+17.85  
 N = 1713581.3074  
 E = 2557470.9463  
 $\Delta = 42^\circ 12' 05''$  (LT)  
 D = 8° 57' 42"  
 R = 640.00'  
 T = 246.96'  
 L = 470.91'  
 E = 46.00'  
 S.E. RUN = N/A  
 P.C. STA = 79+70.89  
 N = 1713799.6031  
 E = 2557355.4548  
 P.T. STA = 84+41.80  
 N = 1713497.1765  
 E = 2557703.1387

CURVE PR-IL89RP-1

PROP. CURVE PR-IL89-1  
 PI STA. = 2257+02.70  
 N = 1715179.3406  
 E = 2556705.9377  
 $\Delta = 1^\circ 24' 29''$  (LT)  
 D = 0° 17' 27"  
 R = 19,692.05'  
 T = 241.97'  
 L = 483.92'  
 E = 1.49'  
 S.E. RUN = N/A  
 P.C. STA = 2254+60.73  
 N = 1714937.4331  
 E = 2556711.5131  
 P.T. STA = 2259+44.65  
 N = 1715421.0380  
 E = 2556694.4199

CURVE PR-IL89RP-2

PROP. CURVE PR-IL89-2  
 PI STA. = 2260+55.21  
 N = 1715531.4765  
 E = 2556689.1571  
 $\Delta = 1^\circ 16' 01''$  (RT)  
 D = 0° 34' 23"  
 R = 10,000.00'  
 T = 110.56'  
 L = 221.12'  
 E = 0.61'  
 S.E. RUN = N/A  
 P.C. STA = 2259+44.65  
 N = 1715421.0380  
 E = 2556694.4199  
 P.T. STA = 2261+65.77  
 N = 1715642.0043  
 E = 2556686.3374

CURVE PIL89LP-1

PROP. CURVE PIL89LP-1  
 PI STA. = 157+02.70  
 N = 1715178.9258  
 E = 2556687.9425  
 $\Delta = 1^\circ 24' 29''$  (RT)  
 D = 0° 17' 27"  
 R = 19,692.05'  
 T = 241.97'  
 L = 483.92'  
 E = 1.49'  
 S.E. RUN = N/A  
 P.C. STA = 154+60.73  
 N = 1714937.0184  
 E = 2556693.5178  
 P.T. STA = 159+44.65  
 N = 1715420.8972  
 E = 2556688.3129

CURVE PIL89LP-2

PROP. CURVE PIL89LP-2  
 PI STA. = 160+55.22  
 N = 1715531.4609  
 E = 2556688.4822  
 $\Delta = 1^\circ 16' 01''$  (LT)  
 D = 0° 34' 23"  
 R = 10,000.00'  
 T = 110.56'  
 L = 221.12'  
 E = 0.61'  
 S.E. RUN = N/A  
 P.C. STA = 159+44.65  
 N = 1715420.8972  
 E = 2556688.3129  
 P.T. STA = 161+65.77  
 N = 1715642.0013  
 E = 2556686.2069

CURVE EX-EBEX-2

PROP. CURVE EX-EBEX-2  
 PI STA. = 100+94.33  
 N = 1713588.4358  
 E = 2556037.3687  
 $\Delta = 43^\circ 26' 22''$  (RT)  
 D = 8° 08' 05"  
 R = 704.92'  
 T = 280.80'  
 L = 533.99'  
 E = 53.87'  
 S.E. RUN = N/A  
 P.C. STA = 98+13.53  
 N = 1713677.5168  
 E = 2555771.0713  
 P.T. STA = 103+47.52  
 N = 1713340.6514  
 E = 2556169.4769

CURVE EX-EBEX-3

PROP. CURVE EX-EBEX-3  
 PI STA. = 107+91.52  
 N = 1712948.8646  
 E = 2556378.3611  
 $\Delta = 45^\circ 25' 14''$  (LT)  
 D = 13° 41' 50"  
 R = 419.30'  
 T = 175.48'  
 L = 331.60'  
 E = 35.24'  
 S.E. RUN = N/A  
 P.C. STA = 106+16.03  
 N = 1713103.7156  
 E = 2556295.8011  
 P.T. STA = 109+47.64  
 N = 1712898.9807  
 E = 2556546.6066

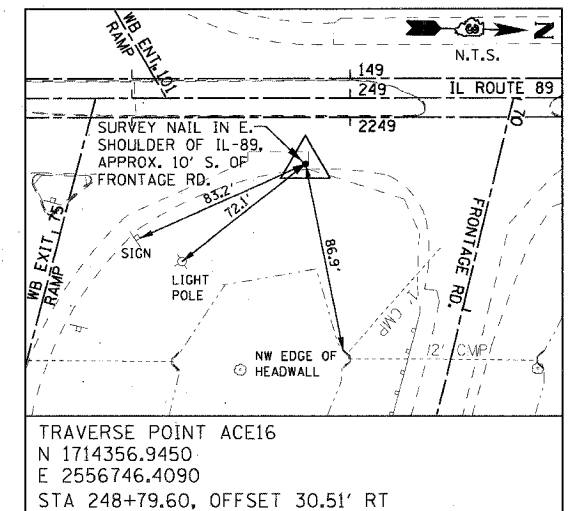
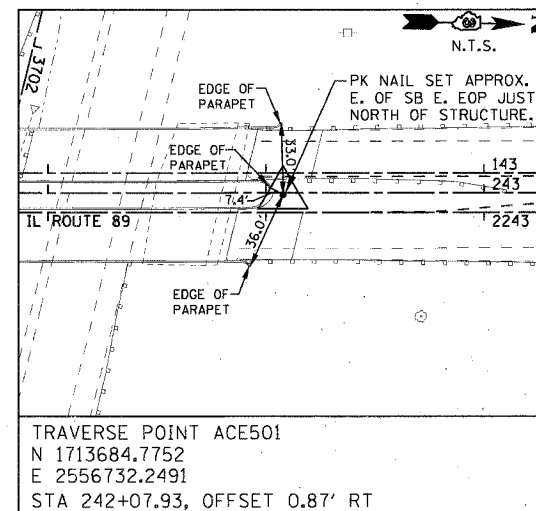
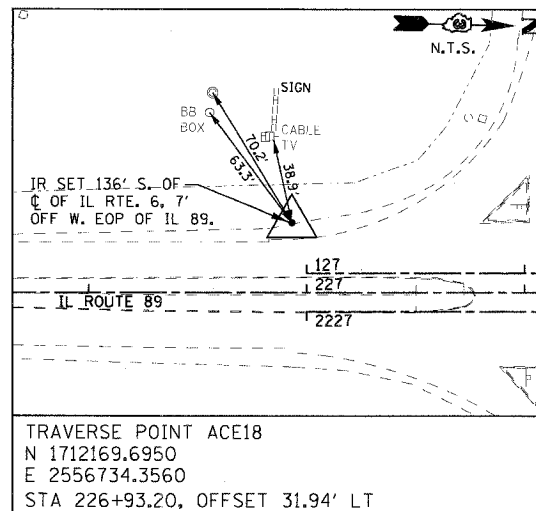
CURVE EX-WBEN-3

PROP. CURVE EX-WBEN-3  
 PI STA. = 92+18.78  
 N = 1713811.0513  
 E = 2555929.5759  
 $\Delta = 42^\circ 59' 08''$  (LT)  
 D = 8° 17' 38"  
 R = 691.42'  
 T = 272.26'  
 L = 518.28'  
 E = 51.67'  
 S.E. RUN = N/A  
 P.C. STA = 89+46.52  
 N = 1713865.5866  
 E = 2555662.8384  
 P.T. STA = 94+64.80  
 N = 1713953.0224  
 E = 2556161.8844

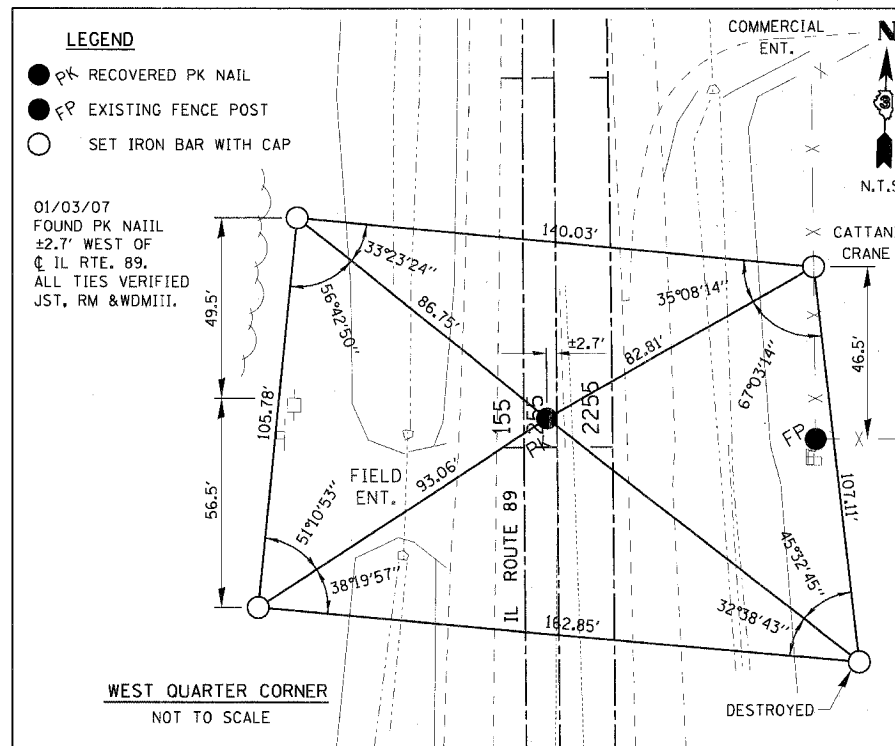
CURVE EX-EBEN-1

PROP. CURVE EX-EBEN-1  
 PI STA. = 60+25.10  
 N = 1713295.5089  
 E = 2557541.1537  
 $\Delta = 42^\circ 56' 02''$  (RT)  
 D = 8° 10' 48"  
 R = 700.44'  
 T = 275.44'  
 L = 524.86'  
 E = 52.21'  
 S.E. RUN = N/A  
 P.C. STA = 57+49.66  
 N = 1713152.0349  
 E = 2557306.0284  
 P.T. STA = 62+74.53  
 N = 1713240.3954  
 E = 2557811.0263

DESCRIPTION	STATION	N. COORDINATE	E. COORDINATE
SB PGL	127+00.00	1712177.0189	2556757.1287
IL-89	227+00.00	1712177.2262	2556766.1264
NB PGL	2227+00.00	1712177.4336	2556775.1240
US RTE 6	1806+00.00	1712306.5689	2556375.8535
SPRINGCREEK DR	1811+00.00	1712316.4268	2557075.7841
I-80	3700+00.00	1713611.3442	2556470.8219
I-80	3705+00.00	1713504.4513	2556959.2622



TRAVERSE TIE POINT DIAGRAMS  
 NOT TO SCALE



MONUMENT DIAGRAM  
 NOT TO SCALE

BENCHMARK INFORMATION					
POINT	N. COORDINATE	E. COORDINATE	STATION	OFFSET	ELEVATION
BM#1	1713440.4800	2556744.8120	239+63.41	7.7983 RT	679.04
DESCRIPTION:	CUT BOX AT SOUTH END OF WEST CONCRETE PARAPET WALL OF NORTHBOUND IL ROUTE 89 OVER I-80				

REVISIONS	
NAME	DATE

ILLINOIS DEPARTMENT OF TRANSPORTATION  
 IL ROUTE 89 OVER I-80

ALIGNMENT & TIES

SCALE: VERT. NONE  
 HORIZ. NONE  
 DATE: 08/10/07

DRAWN BY ACE/CAD  
 CHECKED BY TMH

PLOT DATE = 8/1/2007  
 FILE NAME = g:\projects\2006-18895\_062\road\9991\WB2.dwg  
 PLOT SCALE = 1/8"=1'-0"  
 PLOT TYPE = 1/8"=1'-0"

