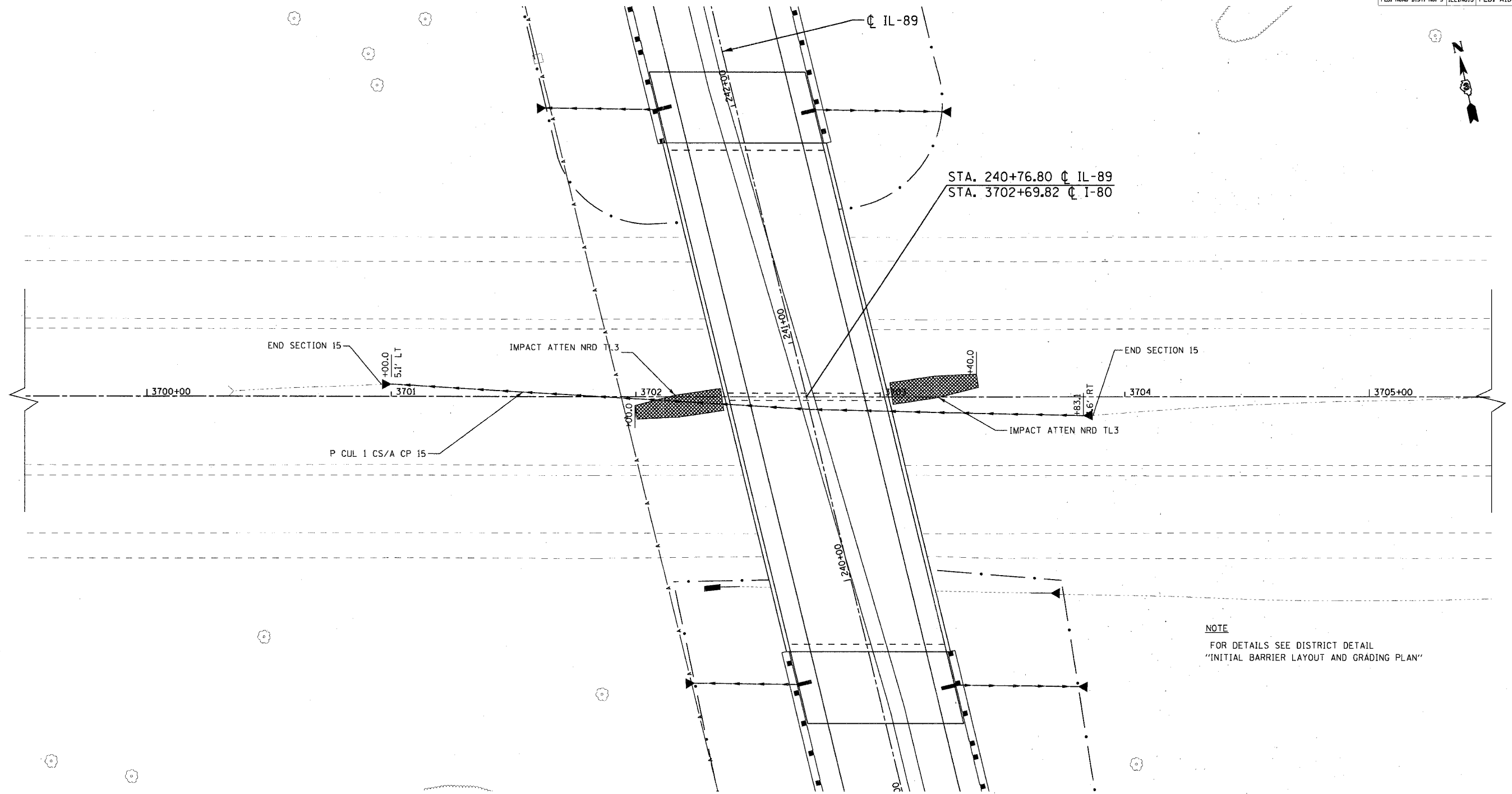


F.A.I. RTE.	SECTION	COUNTY	TOTAL SHEET NO.
80	06-8HBR	BUREAU	165 36
STA. 3699+50.00		TO STA. 3705+50.00	
FED. ROAD DIST. NO. 3 ILLINOIS FED. AID PROJECT			



NOTE
FOR DETAILS SEE DISTRICT DETAIL
"INITIAL BARRIER LAYOUT AND GRADING PLAN"

REVISIONS	
NAME	DATE

ILLINOIS DEPARTMENT OF TRANSPORTATION
IL ROUTE 89 OVER I-80
PROPOSED PLAN
INTERSTATE 80

SCALE: VERT. NONE
HORIZ. NONE
DATE: 08/10/07
DRAWN BY ACE/CAD
CHECKED BY TMH

