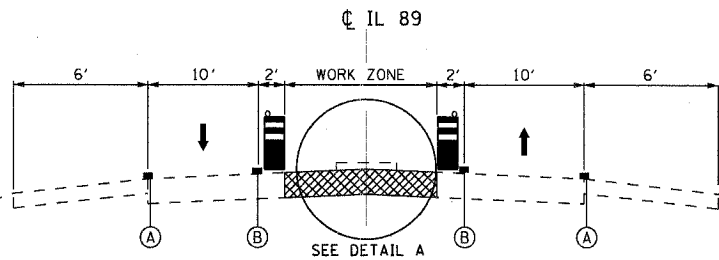
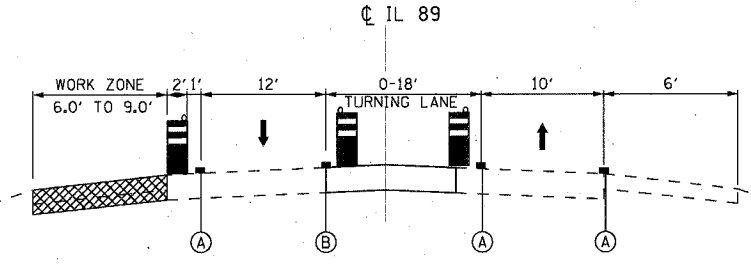


F.A.I. RTE.	SECTION	COUNTY	TOTAL SHEETS	SHEET NO.
80	06-BHBR	BUREAU	165	37
STA.		TO STA.		
FED. ROAD DIST. NO. 3 (ILLINOIS)		FED. AID PROJECT		



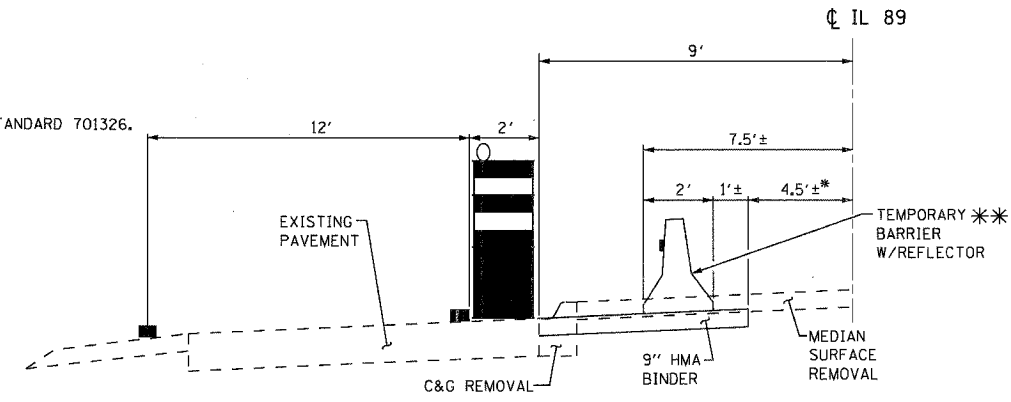
MOT PRE-STAGE A
STA 228+50 TO STA 262+60

1. REMOVE MEDIAN CURB & GUTTER, MEDIAN, AND PAVEMENT MARKING LINES.
2. INSTALL 9" HMA BINDER, PAID FOR AS "HMA SHOULDERS 9" TO HANDLE TRAFFIC IN STAGE 1 AND STAGE 2.
3. SIGNING AND BARRICADING IN ACCORDANCE WITH STANDARDS 701502 AND 701701.
4. TO BE PAID FOR AS TRAFFIC CONTROL AND PROTECTION, STANDARD 701326.



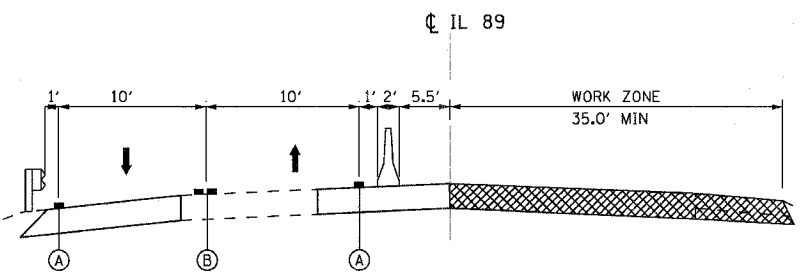
MOT PRE-STAGE B
STA 228+50 TO STA 262+60

1. REMOVE SOUTHBOUND OUTSIDE SHOULDER AND GUARDRAIL.
2. INSTALL 9" HMA BINDER, PAID FOR AS "HMA SHOULDERS 9" TO HANDLE TRAFFIC IN STAGE 1.
3. SIGNING AND BARRICADING IN ACCORDANCE WITH STANDARDS 701326 AND 701502
4. TO BE PAID FOR AS TRAFFIC CONTROL AND PROTECTION, STANDARD 701326.



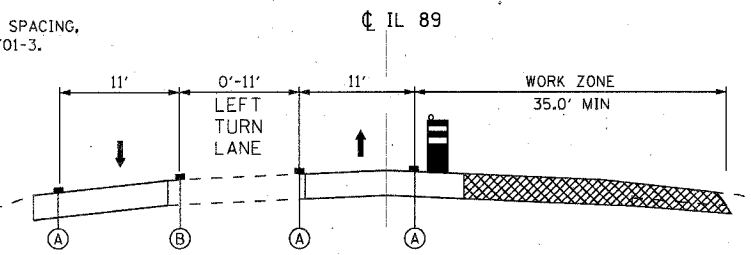
DETAIL A

* TEMPORARY PAVEMENT SHOULD NOT BE CONSTRUCTED BEYOND THIS IN RECONSTRUCTION AREA.
** FOR PRISMATIC BARRIER REFLECTOR SPACING, SEE DISTRICT DETAILS 701-2 AND 701-3.



MOT STAGE 1
STA 238+10 TO STA 243+70
(LOOKING NORTH)

1. REMOVE AND REPLACE THE NORTHBOUND STRUCTURE.
2. REMOVE THE PAVEMENT ON EACH SIDE OF THE BRIDGE AND ANY CONFLICTING PAVEMENT MARKING LINES.
3. INSTALL THE BASE AND BINDER COURSES AND OUTSIDE SHOULDER.
4. TO BE PAID FOR AS TRAFFIC CONTROL COMPLETE.



MOT STAGE 1
STA 228+60 TO STA 238+10
STA 243+70 TO STA 255+00
(LOOKING NORTH)

1. REMOVE AND REPLACE THE NORTHBOUND STRUCTURE.
2. REMOVE THE PAVEMENT ON EACH SIDE OF THE BRIDGE.
3. INSTALL THE BASE AND BINDER COURSES AND OUTSIDE SHOULDER.
4. TO BE PAID FOR AS TRAFFIC CONTROL COMPLETE.

MOT LEGEND

- (A) TEMPORARY PAVEMENT MARKING - LINE 4", WHITE (70300220)
- (B) TEMPORARY PAVEMENT MARKING - LINE 4", YELLOW (70300220)
- (C) PAVEMENT MARKING TAPE, TYPE III 4", WHITE (70300520) (ON APPROACH SLAB AND BRIDGE ONLY)
- (D) PAVEMENT MARKING TAPE, TYPE III 4", YELLOW (70300520) (ON APPROACH SLAB AND BRIDGE ONLY)

* NOTE: STAGES 1, 2, AND 3 - SIGNING AND FLAGGERS SHALL BE IN ACCORDANCE WITH STATE STANDARD 701326 WHEN THE CONTRACTOR'S OPERATIONS ENCR OACH INTO THE OPEN.

REVISIONS	
NAME	DATE

ILLINOIS DEPARTMENT OF TRANSPORTATION
IL ROUTE 89 OVER I-80
MAINTENANCE OF TRAFFIC
TYPICAL SECTIONS

SCALE: VERT. NONE
HORIZ. NONE
DATE: 08/10/07

DRAWN BY ACE/CAD
CHECKED BY TMH

PLOT DATE: 8/9/2007
 FILE NAME: g:\projects\2004\89_082\cadd\BPH011\PL1.dwg
 PLOT SCALE: 1/8" = 1' IN.
 PLOT TIME: 1:02:55 AM

