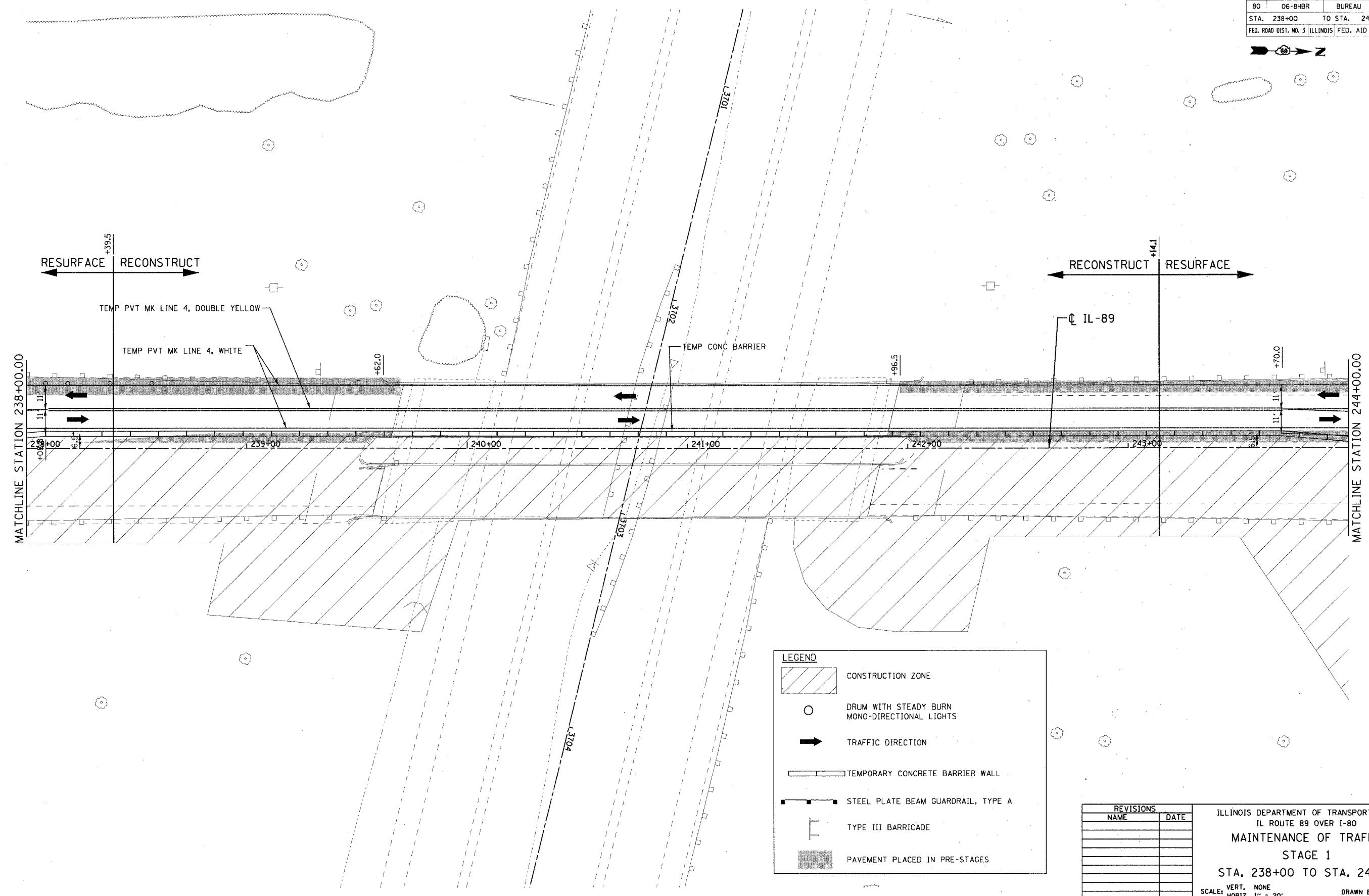


F.A.I. RTE.	SECTION	COUNTY	TOTAL SHEETS	SHEET NO.
80	06-BHBR	BUREAU	165	41
STA. 238+00		TO STA. 244+00		
FED. ROAD DIST. NO. 3 ILLINOIS FED. AID PROJECT				



LEGEND

- CONSTRUCTION ZONE
- DRUM WITH STEADY BURN MONO-DIRECTIONAL LIGHTS
- TRAFFIC DIRECTION
- TEMPORARY CONCRETE BARRIER WALL
- STEEL PLATE BEAM GUARDRAIL, TYPE A
- TYPE III BARRICADE
- PAVEMENT PLACED IN PRE-STAGES

REVISIONS	
NAME	DATE

ILLINOIS DEPARTMENT OF TRANSPORTATION
 IL ROUTE 89 OVER I-80
MAINTENANCE OF TRAFFIC
STAGE 1
 STA. 238+00 TO STA. 244+00

VERT. NONE
 SCALE: HORIZ. 1" = 20'
 DATE: 08/10/07

DRAWN BY ACE/CAD
 CHECKED BY TMH

PLOT DATE: 8/9/2007
 FILE NAME: G:\proj\12854\891_382\cead\89M1183.dwg
 PLOT SCALE: 25.000000 / 1 IN.
 USER NAME: zplamnd

