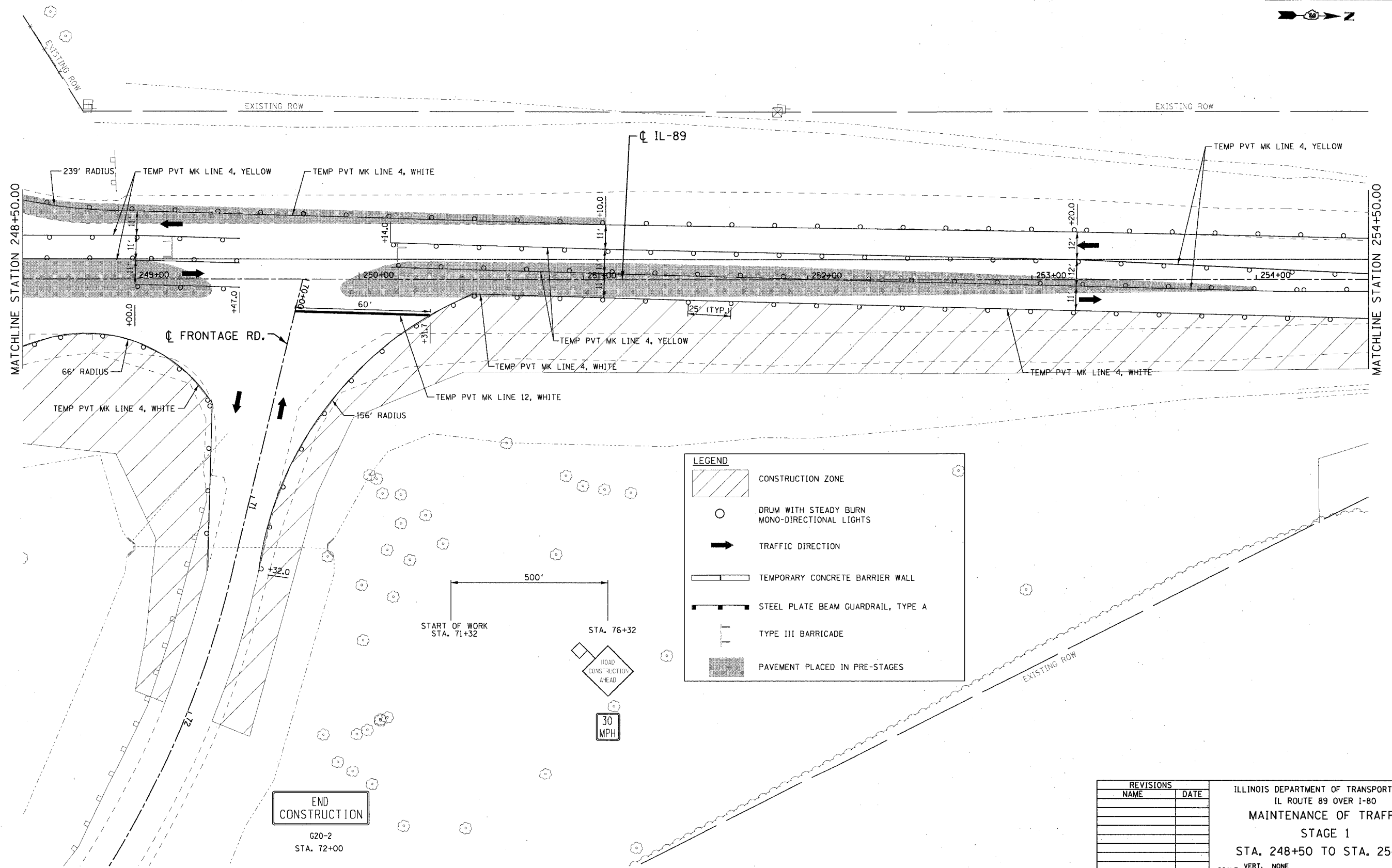
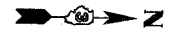
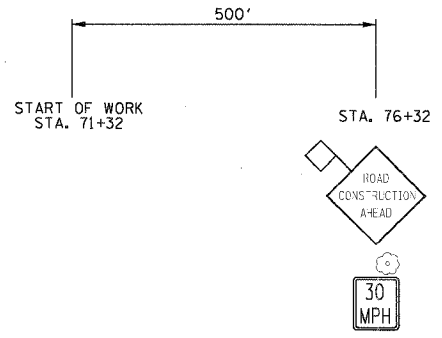


F.A.I. RTE.	SECTION	COUNTY	TOTAL SHEETS	SHEET NO.
80	06-BHBR	BUREAU	165	43
STA. 248+50 TO STA. 254+50			FED. ROAD DIST. NO. 3 ILLINOIS FED. AID PROJECT	



LEGEND

- CONSTRUCTION ZONE
- DRUM WITH STEADY BURN MONO-DIRECTIONAL LIGHTS
- TRAFFIC DIRECTION
- TEMPORARY CONCRETE BARRIER WALL
- STEEL PLATE BEAM GUARDRAIL, TYPE A
- TYPE III BARRICADE
- PAVEMENT PLACED IN PRE-STAGES



END CONSTRUCTION
G20-2
STA. 72+00

REVISIONS	
NAME	DATE

ILLINOIS DEPARTMENT OF TRANSPORTATION
IL ROUTE 89 OVER I-80
MAINTENANCE OF TRAFFIC
STAGE 1
STA. 248+50 TO STA. 254+50
SCALE: VERT. NONE
HORIZ. 1" = 20'
DATE: 08/10/07
DRAWN BY ACE/CAD
CHECKED BY TMH

PLOT DATE = 8/12/08
 FILE NAME = c:\p\proj\20844885\082\cadd\89MT108.dwg
 PLOT SCALE = 20.0000' / 1"
 USER NAME = zbrand

