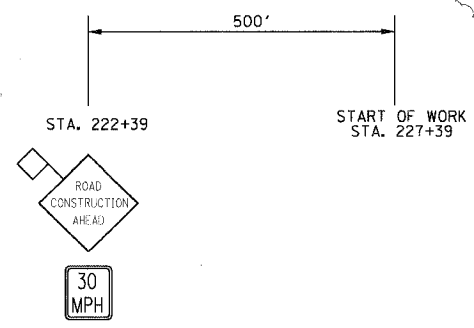
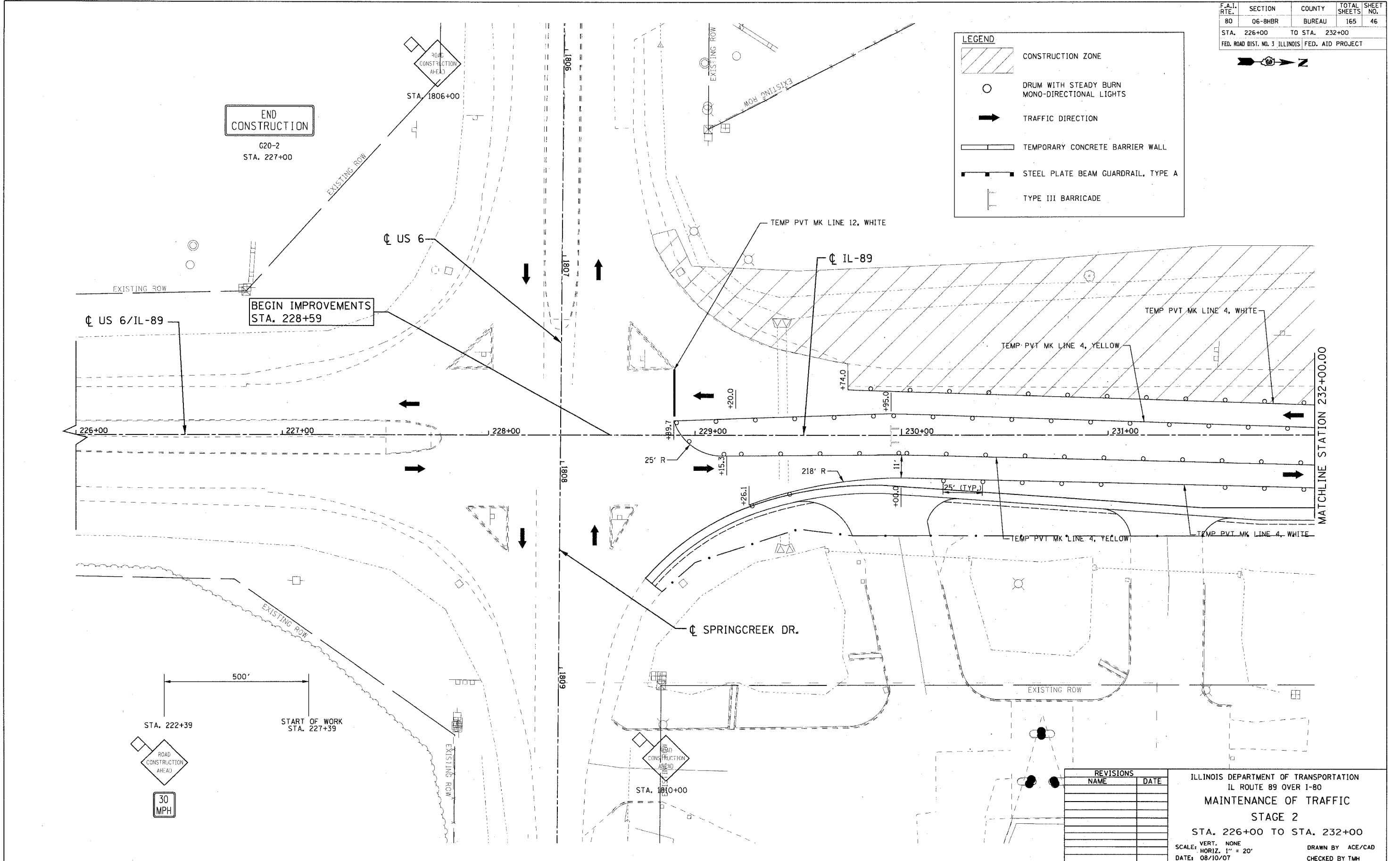


F.A.I. RTE.	SECTION	COUNTY	TOTAL SHEETS	SHEET NO.
80	06-8HBR	BUREAU	165	46
STA. 226+00		TO STA. 232+00		
FED. ROAD DIST. NO. 3 ILLINOIS FED. AID PROJECT				

LEGEND

- CONSTRUCTION ZONE
- DRUM WITH STEADY BURN MONO-DIRECTIONAL LIGHTS
- TRAFFIC DIRECTION
- TEMPORARY CONCRETE BARRIER WALL
- STEEL PLATE BEAM GUARDRAIL, TYPE A
- TYPE III BARRICADE



REVISIONS	
NAME	DATE

ILLINOIS DEPARTMENT OF TRANSPORTATION
 IL ROUTE 89 OVER I-80
 MAINTENANCE OF TRAFFIC
 STAGE 2
 STA. 226+00 TO STA. 232+00
 VERT. NONE
 SCALE: HORIZ. 1" = 20'
 DATE: 08/10/07
 DRAWN BY ACE/CAD
 CHECKED BY TMH

PLOT DATE = 8/10/07
 PLOT SCALE = 30' = 1"
 USER NAME = zhanid

