

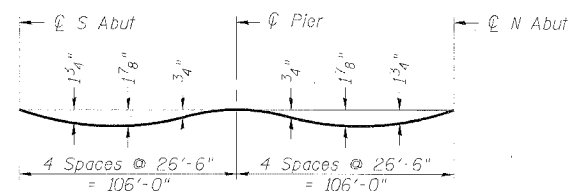
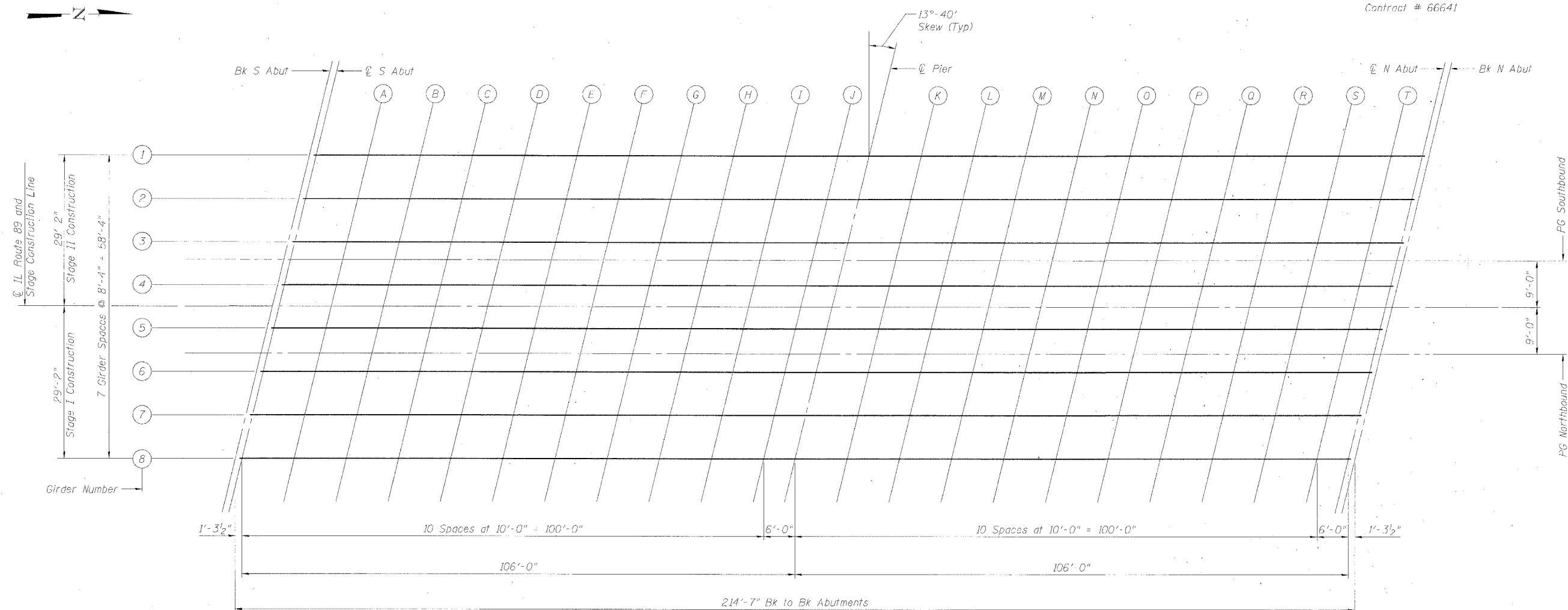
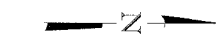
STATE OF ILLINOIS
DEPARTMENT OF TRANSPORTATION

ROUTE NO.	SECTION	COUNTY	SHEET NO.	SHEET
FAI 80	06-8HBR	BURFAU	165	76
FED. ROAD DIST. NO. 7		BILL NO. 8	FED. AID PROJECT	

SHEET NO. 5

22 SHEETS

Contract # 66641

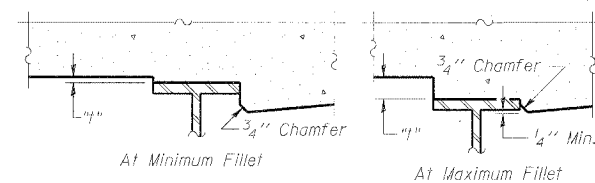


DEAD LOAD DEFLECTION DIAGRAM

(Includes weight of concrete only.)

Note:

The above deflections are not for use in the field if the Engineer is working from "Theoretical Grade Elevations Adjusted for Dead Load Deflection."



FILLET HEIGHTS

To determine "h": After all structural steel has been erected, elevations of the top flanges of the beams shall be taken at intervals shown on the plans. These elevations subtracted from the "Theoretical Grade Elevations Adjusted for Dead Load Deflection", shown on the plans, minus slab thickness, equals the fillet heights "h" above top flange of beams.

**TOP OF DECK ELEVATIONS
(1 OF 3)**

IL ROUTE 89 OVER
FAI ROUTE 80 (I-80)
SECTION 06-8HBR
BUREAU COUNTY
STATION 3702+69.82
STRUCTURE NO. 006-0178

DESIGNED	BPS
CHECKED	BHS
DRAWN	RRG
CHECKED	GSP

PLOT DATE = 7/30/2007
FILE NAME = C:\Users\jerry\Documents\ILLINOIS\006-0178.dwg
PLOT SCALE = 1/4"
USER NAME = jerry

