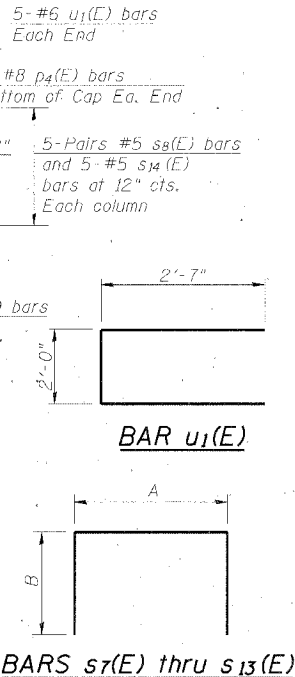
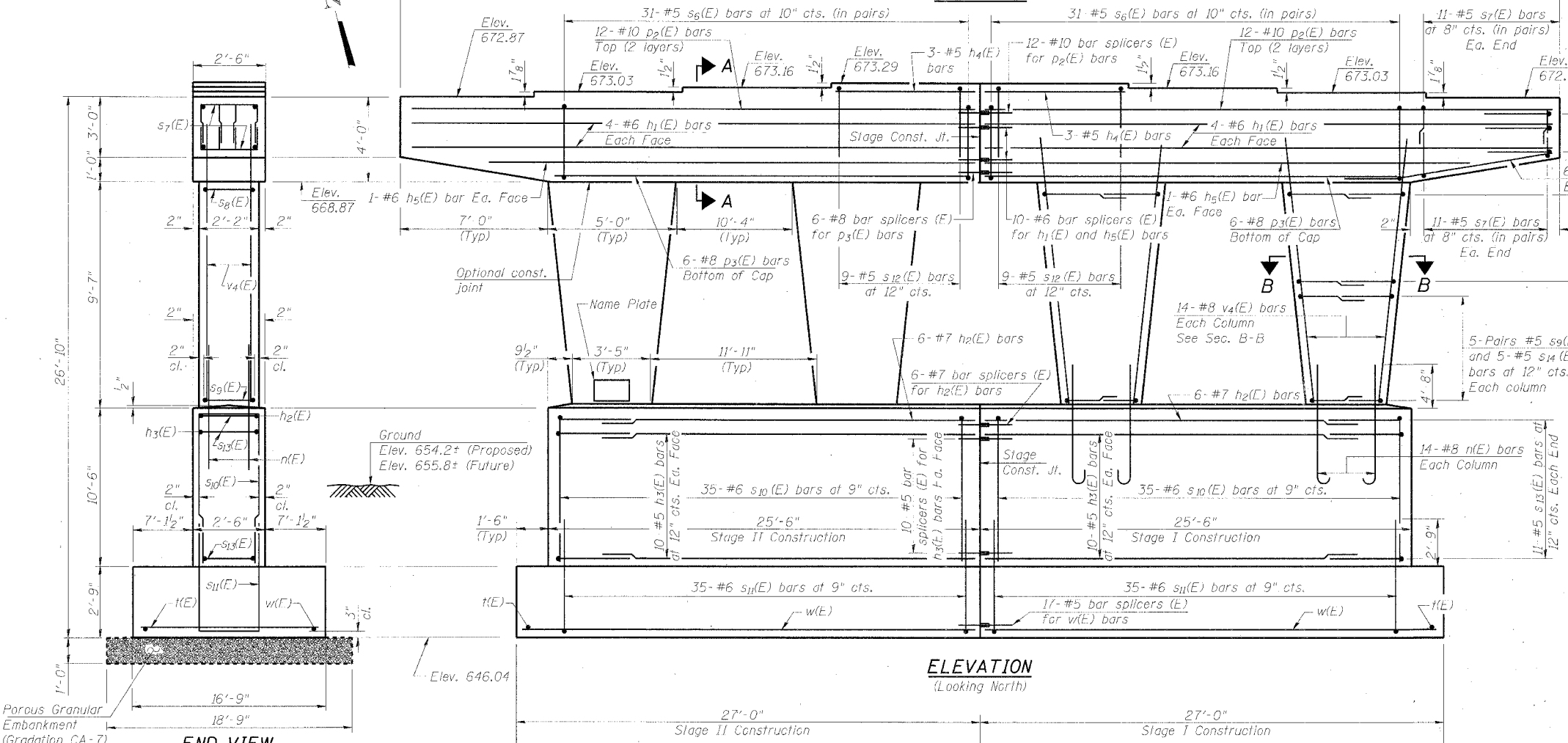
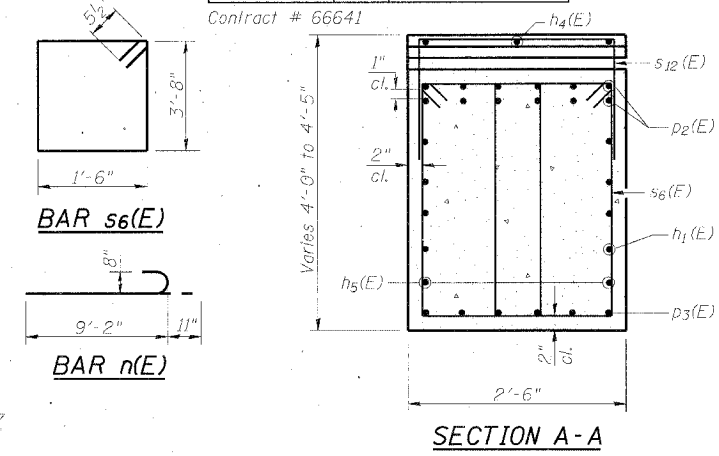
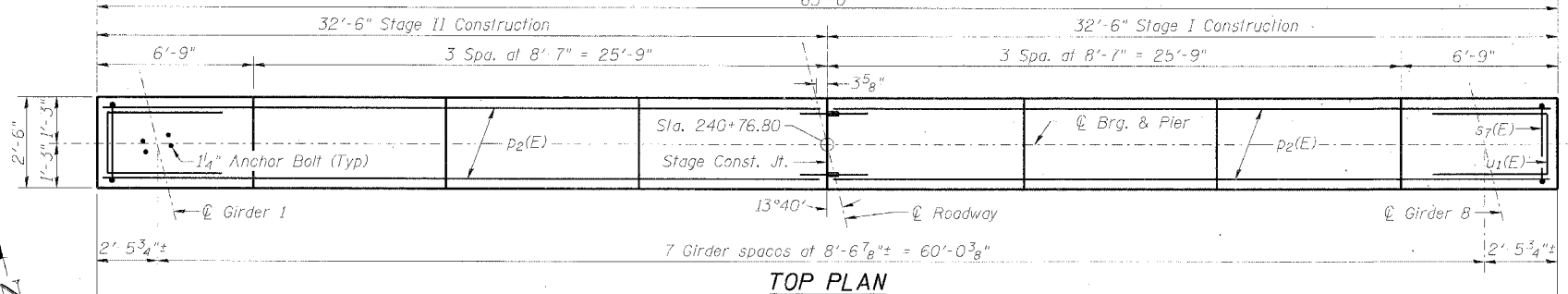
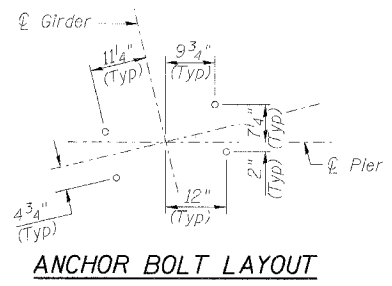


STATE OF ILLINOIS
DEPARTMENT OF TRANSPORTATION

ROUTE NO.	SECTION	COUNTY	DATE	SHEET NO.
FAI 80	06-8HBR	BUREAU	165	89
22 SHEETS				

Contract # 66641

Notes:
Space reinforcement in cap to miss anchor bolts.
Pour steps monolithically with cap.



A & B DIMENSIONS

Bar	A	B
s7(E)	1'-6"	2'-11"
s8(E)	1'-10"	3'-5"
s9(E)	1'-10"	3'-1"
s10(E)	2'-2"	10'-2"
s11(E)	2'-2"	5'-3"
s12(E)	2'-2"	2'-2"
s13(E)	2'-0"	2'-2"

BILL OF MATERIAL

Bar	No.	Size	Length	Shape
h1(E)	16	#6	32'-3"	
h2(E)	12	#7	25'-3"	
h3(E)	40	#5	25'-3"	
h4(E)	6	#5	8'-3"	
h5(E)	4	#6	29'-8"	
n(E)	56	#8	10'-1"	
p2(E)	24	#10	32'-3"	
p3(E)	12	#8	25'-3"	
p4(E)	12	#8	9'-7"	
s6(E)	124	#5	11'-3"	
s7(E)	88	#5	7'-4"	
s8(E)	40	#5	8'-8"	
s9(E)	40	#5	8'-0"	
s10(E)	70	#6	22'-6"	
s11(E)	70	#6	12'-8"	
s12(E)	18	#5	6'-6"	
s13(E)	22	#5	6'-4"	
s14(E)	40	#5	2'-10"	
t(E)	108	#7	16'-5"	
u1(E)	10	#6	7'-2"	
v4(E)	56	#8	11'-7"	
w(E)	34	#5	26'-8"	

Structure Excavation	Cu. Yd.	463
Concrete Structures	Cu. Yd.	179.7
Reinforcement Bars, Epoxy Coated	Pound	21,010
Porous Granular Embankment	Cu. Yd.	39
Concrete Sealer	Sq. Ft.	1,923

END VIEW

Maximum Applied Soil Bearing Pressure = 4,000 psf

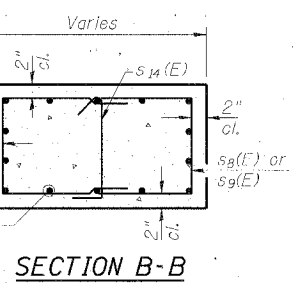
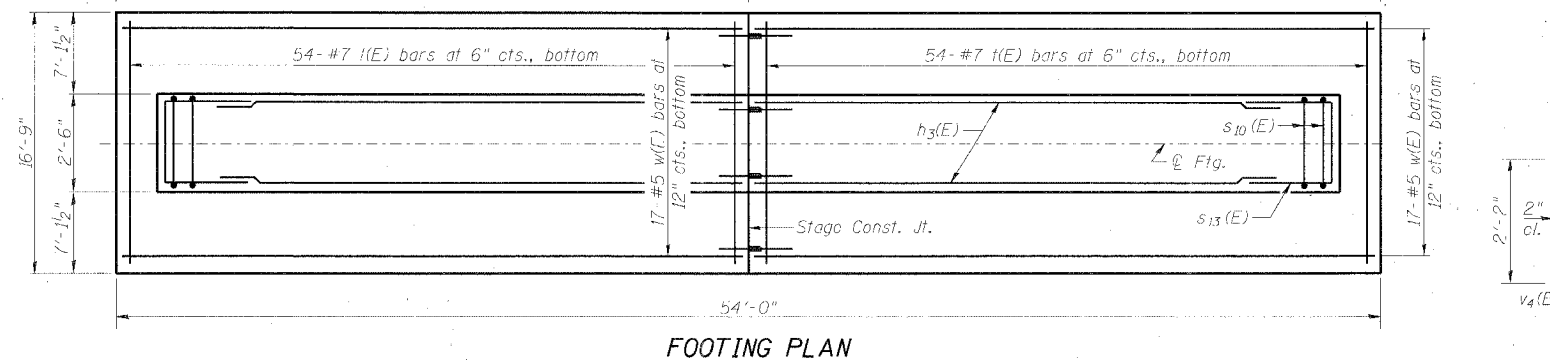
MINIMUM BAR LAP

- #5 bar = 2'-2"
- #6 bar = 2'-7"
- #7 bar = 3'-5"
- #8 bar = 4'-6"

DESIGNED ADB
CHECKED DLS
DRAWN ADB
CHECKED MTH

BAR p4(E)

BAR s14(E)



PIER

IL ROUTE 89 OVER
FAI ROUTE 80 (I-80)
SECTION 06-8HBR
BUREAU COUNTY
STATION 3702+69.82
STRUCTURE NO. 006-0178

PLOT DATE: 7/30/2007
 FILE NAME: g:\proj\1205489_002\cadd\IL89R_P1.dwg
 PLOT SCALE: 1/4"=1'-0"
 USER NAME: zhangp