

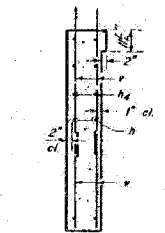
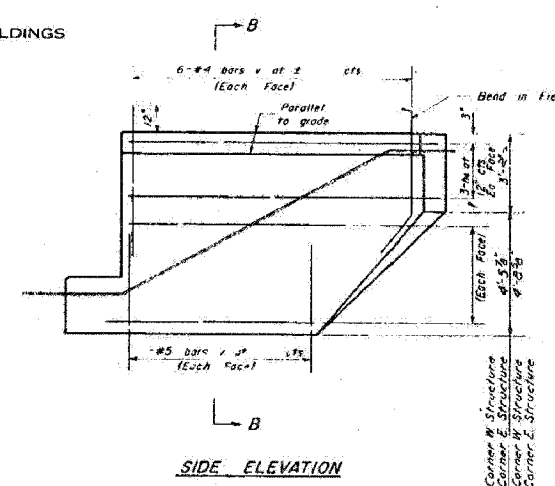
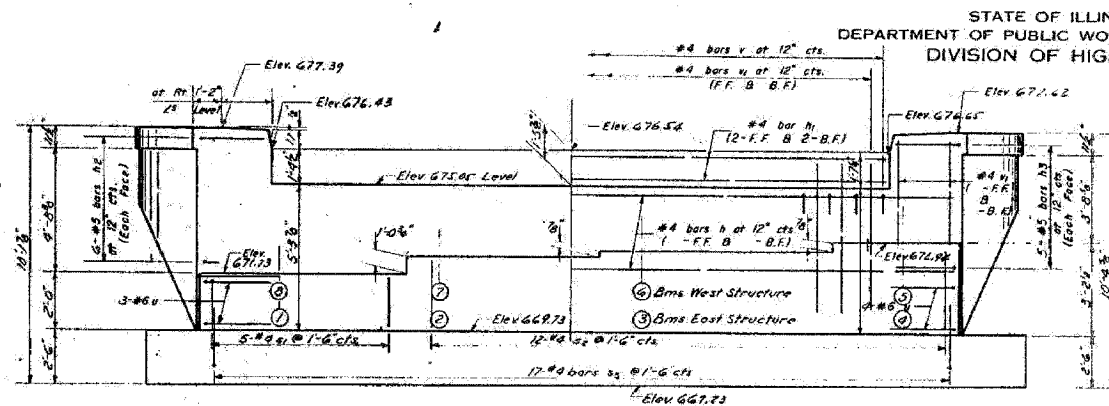
STATE OF ILLINOIS
DEPARTMENT OF TRANSPORTATION

ROUTE NO.	SECTION	COUNTY	STATION	SHEET
FAI 80	06-8HBR	BURFAU	165	99
FED. ROAD DIST. NO. 7	ILLINOIS	FED. AID PROJECT		

Contract # 66641

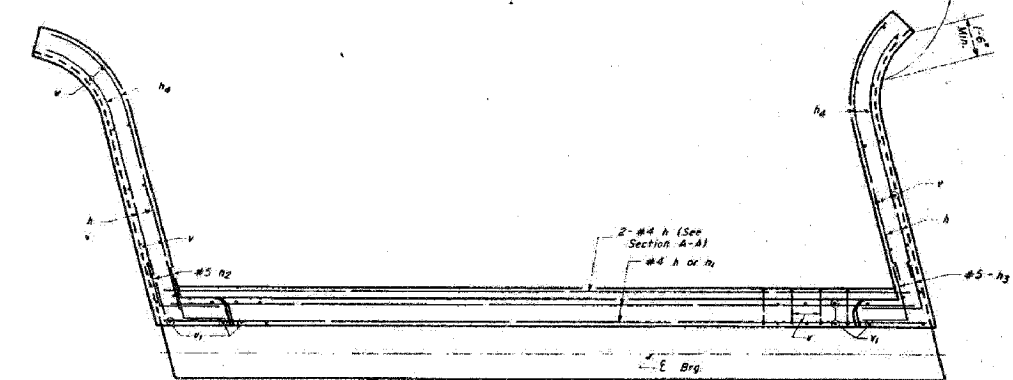
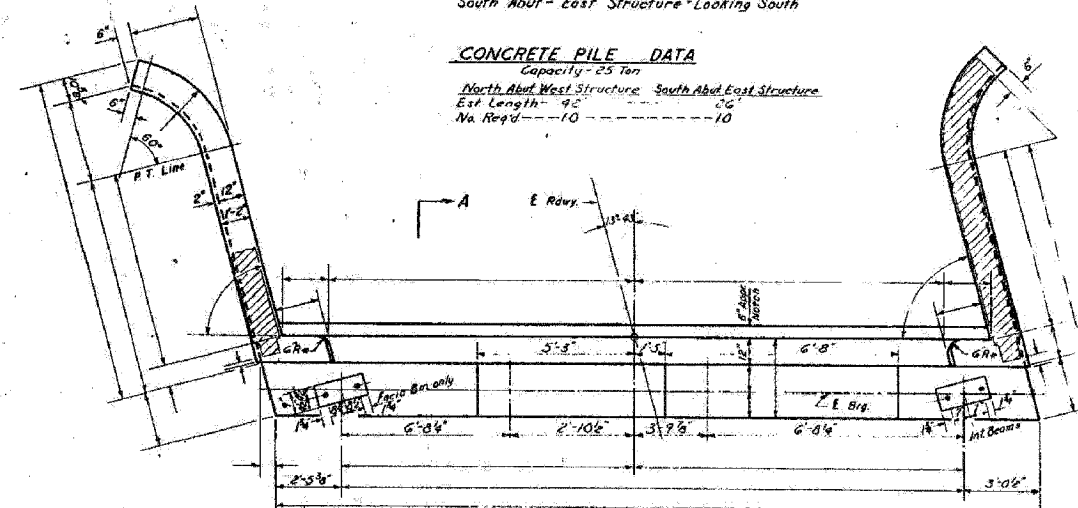
DATE	BY	CHKD	APP'D	NO.	DATE
				21	10

SHEET NO 6
9 SHEETS



ELEVATION
At Right Angles to E. Hwy.
North Abut - West Structure - Looking North
South Abut - East Structure - Looking South

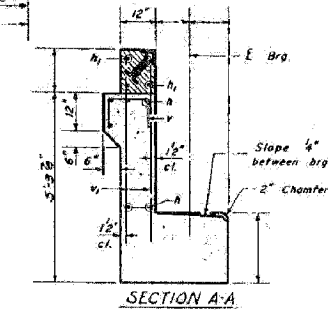
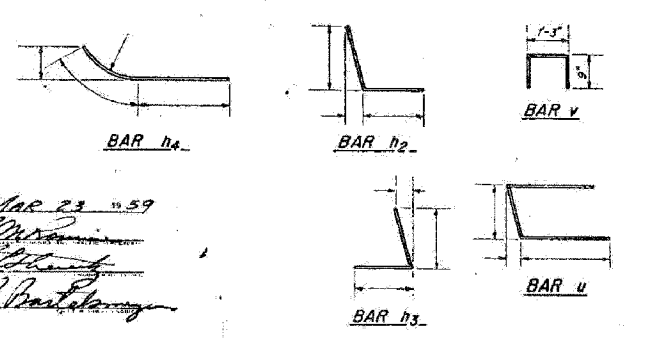
CONCRETE PILE DATA
Capacity - 25 Ton
North Abut West Structure, South Abut East Structure
Est. Length - 92' - 0"
No. Reqd - 10



Note: Contractor shall construct curb without radius when 2' curb gutters are used on bridge approaches (See road plans).

PLAN OF ABUTMENT
Dimensions

PLAN OF ABUTMENT
Reinforcement & Pile Spacing



TWO ABUTMENTS
BILL OF REINFORCEMENT

Bar	No.	Size	Length	Shape	Bar	No.	Size	Length	Shape
h		#4							
h ₁		#4							
h ₂		#5							
h ₃		#5							
h ₄		#5							

Reinforcement Bars identical with those shown on sheet 5.

TWO ABUTMENTS
BILL OF MATERIAL

Item	Unit	Quantity
Class X Concrete	Cu. Yd.	71.3
Reinforcement Bars	Lb.	3870
Concrete Piles	Lm. Ft.	680

DESIGNED: *Edward H. ...*
CHECKED: *Joseph ...*
DRAWN: *W. A. Soudan*
APPROVED: *R. ...*

DATE: *MAR 23 1959*

SEE SHEET NO. 5 FOR ALL DIMENSIONS AND DETAILS NOT SHOWN ON THIS SHEET.

NORTH ABUTMENT
WEST STRUCTURE
& SOUTH ABUTMENT
EAST STRUCTURE
FAI RT80 - SEC. 6-8HB
BUREAU COUNTY
STA. 312+11.70

EXISTING PLANS - 1959

IL ROUTE 89 OVER
FAI ROUTE 80 (I-80)
SECTION 06-8HBR
BUREAU COUNTY
STATION 3702+69.82
STRUCTURE NO. 006-0178

FOR INFORMATION ONLY



PLOT DATE = 6/8/2007
FILE NAME = G:\PROJECT\286489\802\CORD\VLBR9.mxd
PLOT SCALE = 1/4"
USER NAME = zhangyb

A-3-L Drawn 5-20-58 Rev. 9-26-58

Revised 1-23-60. Curb Heights R.R.D.