

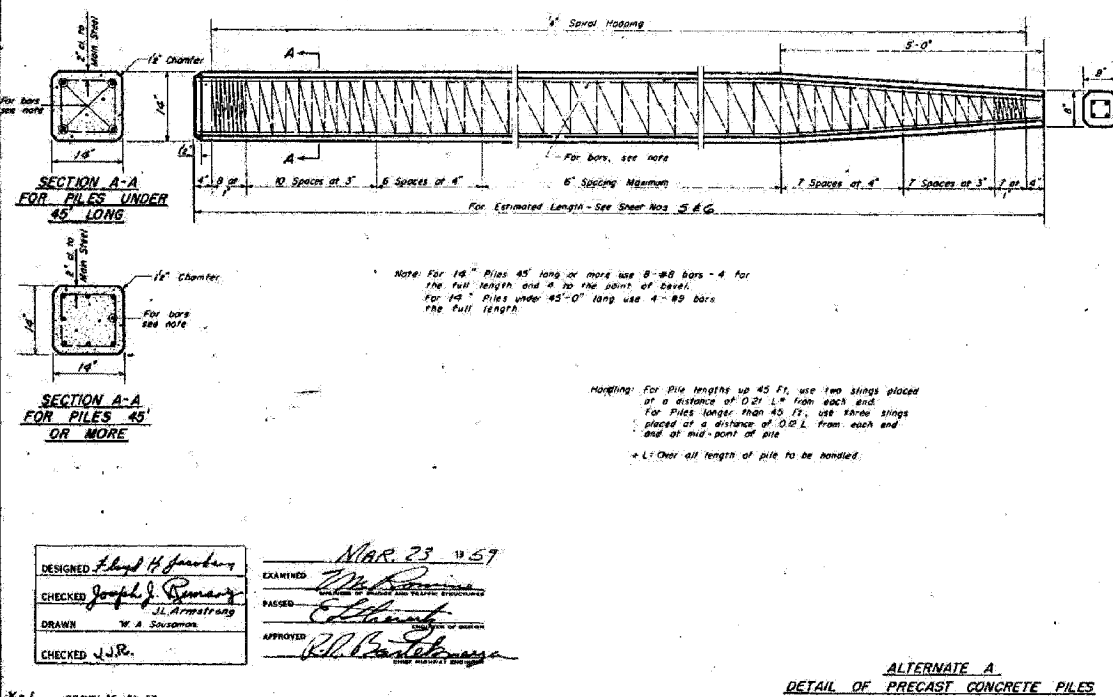
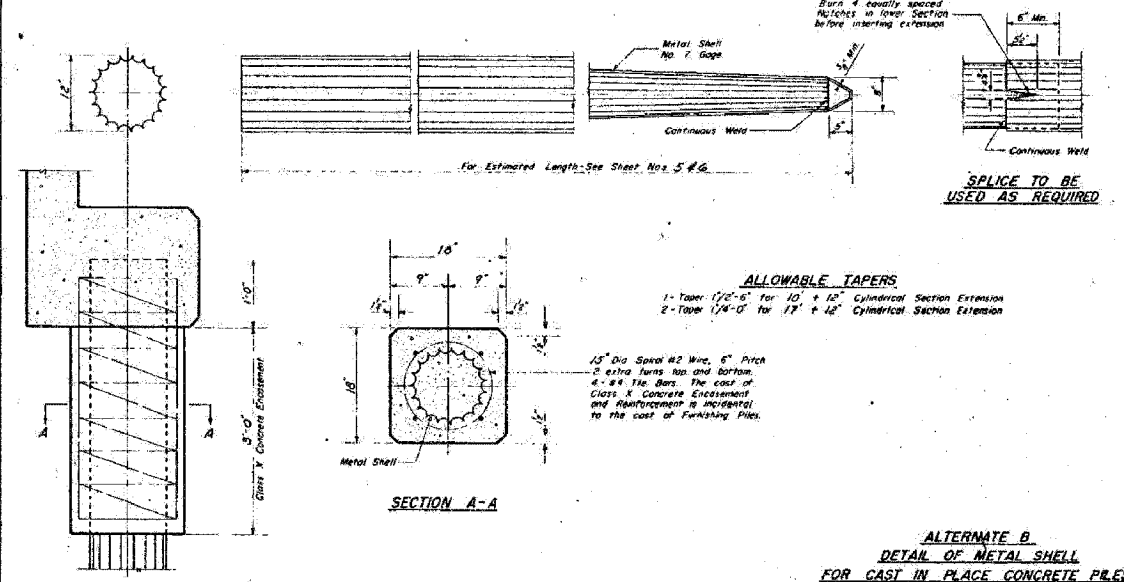
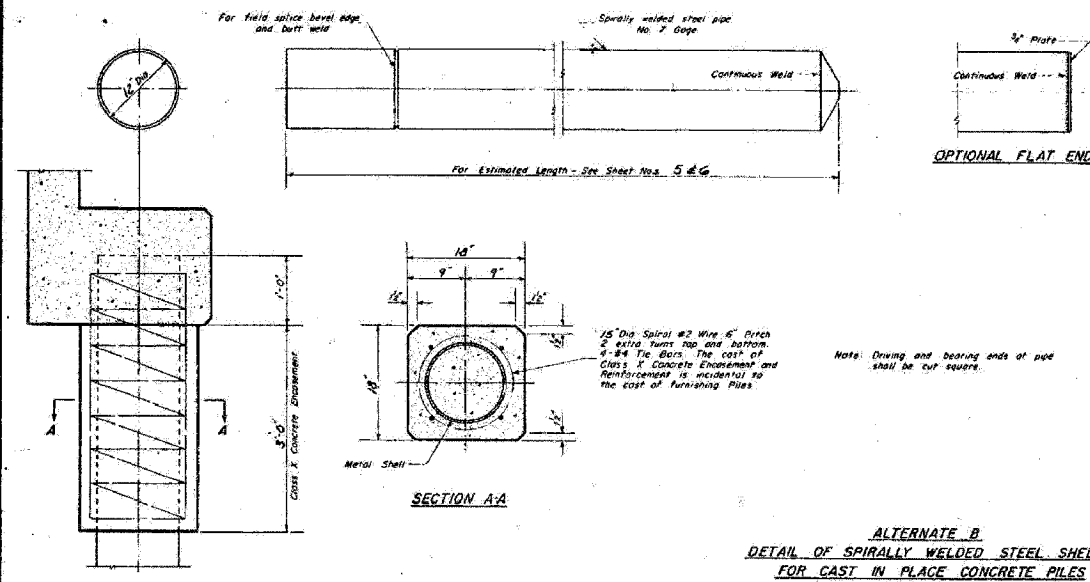
STATE OF ILLINOIS
DEPARTMENT OF TRANSPORTATION

ROUTE NO.	SECTION	COUNTY	POST MILES	SHEET NO.
FAI 80	06	BUREAU	165	102

Contract # 65641

STATE OF ILLINOIS
DEPARTMENT OF PUBLIC WORKS & BUILDINGS
DIVISION OF HIGHWAYS

ROUTE NO.	SECTION	COUNTY	POST MILES	SHEET NO.
FAI 80	06	BUREAU	21	13



Boring No. 1 Located at Sta 1710 1/4 FT. RT. Centerline	Boring No. 2 Located at Sta 1600 1/4 FT. RT. Centerline	Boring No. 3 Located at Sta. 1403 1/4 FT. RT. Centerline
Surface of Ground 637.0	Surface of Ground 636.7	Surface of Ground 635.6
Stiff mottled clay 632.5	Hard mottled clay fill 631.5	Very stiff black silty clay 633.0
Very stiff mottled clay 649.0	Very stiff mottled clay fill 646.5	Very stiff gray mottled clay fill 650.5
Very stiff mottled clay 643.5	Hard mottled silty gravelly fill 643.0	Hard brown mottled clay fill 647.0
Hard brown sandy clay fill 641.5	Dense gray silty sand and gravel 641.5	Very stiff gray sandy silty clay fill 643.0
Hard gray sandy clay fill 637.5	Very dense fine gray silty sand 638.0	Hard gray clay fill 638.0
Hard gray sandy clay fill 636.5	Very stiff gray very sandy till 634.0	Very stiff gray clay fill 635.0
Hard gray sandy clay fill 631.5	Very dense gray silt 631.5	Stiff gray clay fill 628.0

Blows per foot = Penetration of Sampling Spoon
Hammer Weight = 350 Lbs.
Drop = 12 inches
Qu = Unclassified compressive strength in tons per sq ft.

Elevations	Blows per Foot	Qu
650.5	6	220
649.5	6	220
648.0	9	225
647.0	9	225
645.5	39	400
644.5	38	253
643.0	38	253
641.0	30	180
639.5	30	180
638.0	43	201
637.0	43	201
635.0	15	245
633.0	16	241
632.0	18	241
631.5	15	106
629.5	15	106
628.0	18	241
627.0	18	241
626.5	100	805
624.5	100	805
623.0	130	805
622.0	130	805

DESIGNED: *Hand H Gardner*
CHECKED: *Joseph J. Remary*
DRAWN: *J.L. Armstrong*
CHECKED: *J.R.*

EXAMINED: *[Signature]*
PASSED: *[Signature]*
APPROVED: *[Signature]*

MAR. 23 1957

**PILE DETAILS
BORING DATA
FAI RT.80 SEC. 6-8HB
BUREAU COUNTY
STA 312 + 11.90**

EXISTING PLANS - 1959

IL ROUTE 89 OVER
FAI ROUTE 80 (I-80)
SECTION 06-8HBR
BUREAU COUNTY
STATION 3702+69.82
STRUCTURE NO. 006-0178

FOR INFORMATION ONLY



PLOT DATE = 8/8/2007
FILE NAME = C:\PROJECT\20548891_082\CADD\1185.dwg
PLOT SCALE = 1/4" = 1'-0"
USER NAME = z2ajp