

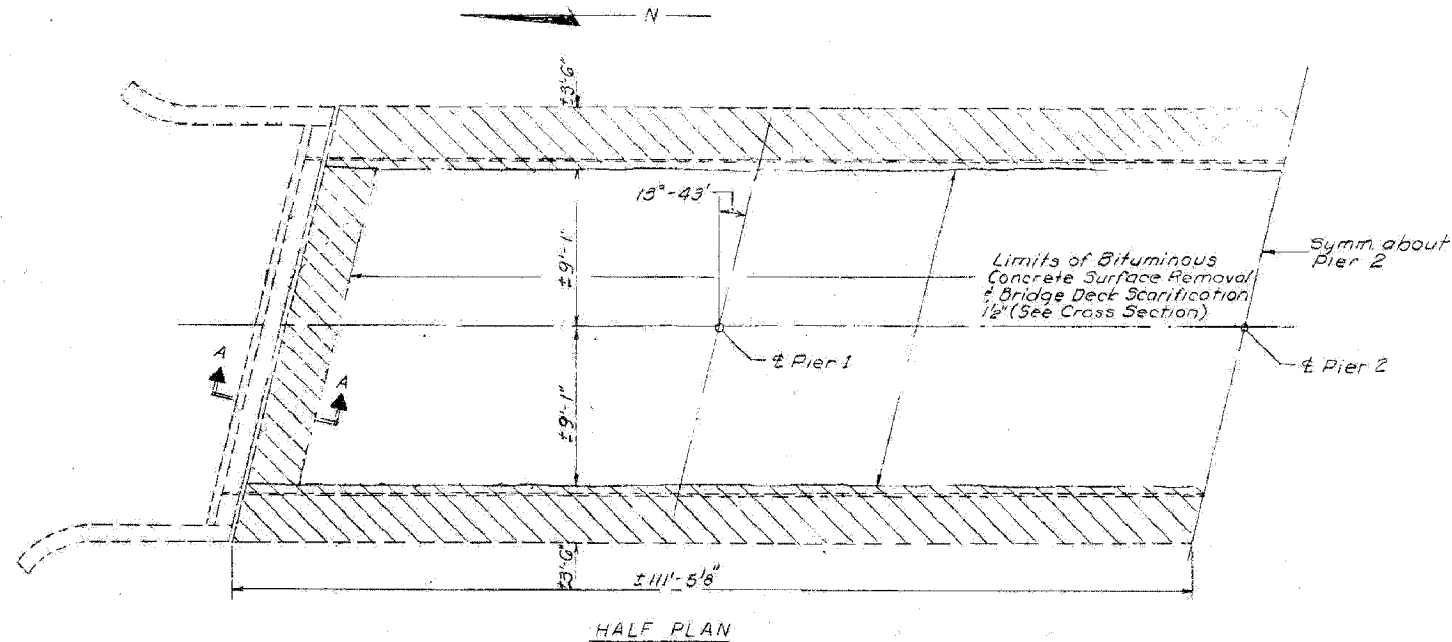
STATE OF ILLINOIS
DEPARTMENT OF TRANSPORTATION

ROUTE NO.	SECTION	COUNTY	TOTAL SHEETS	SHEET NO.
FAI 80	06 8HBR	BUREAU	165	104
FED. ROAD DIST. NO. 7		ILLINOIS	FED. AID PROJECT	

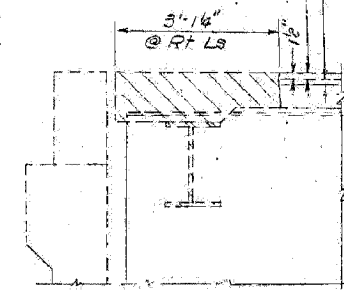
Contract # 66641

STATE OF ILLINOIS
DEPARTMENT OF TRANSPORTATION

ROUTE NO.	SECTION	COUNTY	TOTAL SHEETS	SHEET NO.
FAI 80	06 8HBR	BUREAU	165	104
FED. ROAD DIST. NO. 7		ILLINOIS	FED. AID PROJECT	

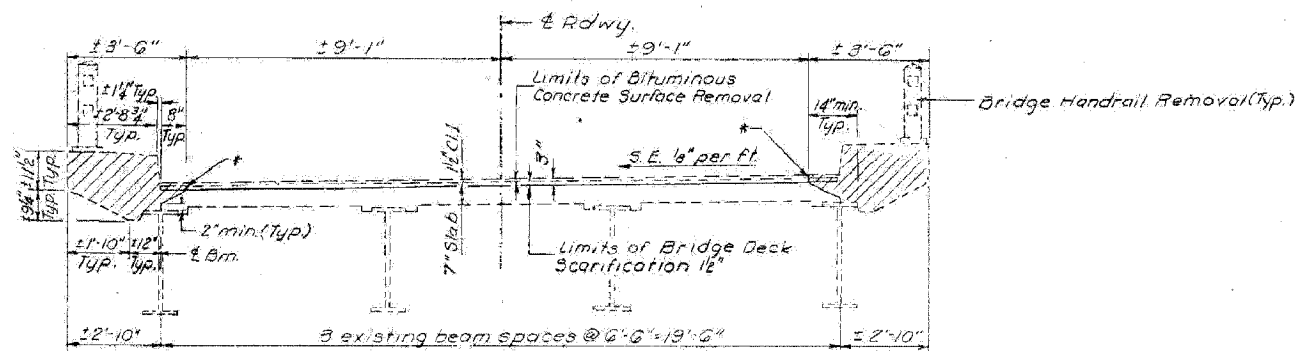


Limits of Bridge Deck Scarification 1 1/2"
Limits of Bituminous Concrete Surface Removal.



SECTION A-A

Notes:
Hatched areas indicate Concrete Removal.
Before making the sawcut in the existing slab a major portion of the cantilevered section of concrete should be removed in order to prevent cracking in the slab. No trucks or heavy construction equipment shall be allowed on the bridge after removal of the cantilevered section has begun.



BILL OF MATERIAL

Item	Unit	Quantity
Concrete Removal	Cu. Yd.	151
Bridge Handrail Removal	Lin. Ft.	892
Bituminous Concrete Surf. Removal	Sq. Yd.	874
Bridge Deck Scarification 1 1/2"	Sq. Yd.	874

DESIGNED Mary Blockdorf
CHECKED Lane Field
DRAWN Mercado
CHECKED Lane Field

EXAMINED
PASSED
APPROVED

CROSS SECTION
East Structure Looking South
West Structure Looking North

* Saw cut existing slab 1" and remove concrete vertically to a point 1" below the existing reinforcing bars.

SUPERSTRUCTURE
REMOVAL DETAILS
FAI RTE. 80 SEC. (06-8HBR)M
BUREAU COUNTY
STA. 312+11.90

EXISTING PLANS - 1985
IL ROUTE 89 OVER
FAI ROUTE 80 (I-80)
SECTION 06-8HBR
BUREAU COUNTY
STATION 3702+69.82
STRUCTURE NO. 006-0178

FOR INFORMATION ONLY