

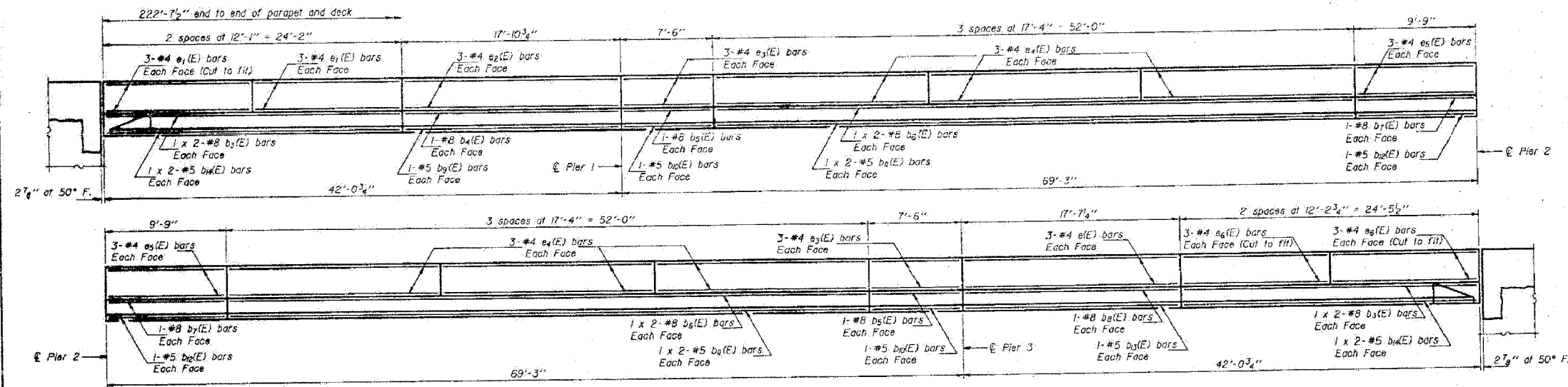
STATE OF ILLINOIS
DEPARTMENT OF TRANSPORTATION

ROUTE NO.	SECTION	COUNTY	SHEET	TOTAL SHEETS
FAI 80	06-8HBR	BUREAU	165	107
ILLINOIS	FED. AID PROJECT			

Contract # 66641

STATE OF ILLINOIS
DEPARTMENT OF TRANSPORTATION

DATE	BY	REVISION
10/26/07	JES	1
11/15/07	JES	2
12/11/07	JES	3
01/15/08	JES	4
02/11/08	JES	5
03/11/08	JES	6
04/11/08	JES	7
05/11/08	JES	8
06/11/08	JES	9
07/11/08	JES	10
08/11/08	JES	11
09/11/08	JES	12
10/11/08	JES	13
11/11/08	JES	14
12/11/08	JES	15
01/11/09	JES	16
02/11/09	JES	17
03/11/09	JES	18
04/11/09	JES	19
05/11/09	JES	20
06/11/09	JES	21
07/11/09	JES	22
08/11/09	JES	23
09/11/09	JES	24
10/11/09	JES	25
11/11/09	JES	26
12/11/09	JES	27
01/11/10	JES	28
02/11/10	JES	29
03/11/10	JES	30
04/11/10	JES	31
05/11/10	JES	32
06/11/10	JES	33
07/11/10	JES	34
08/11/10	JES	35
09/11/10	JES	36
10/11/10	JES	37
11/11/10	JES	38
12/11/10	JES	39
01/11/11	JES	40
02/11/11	JES	41
03/11/11	JES	42
04/11/11	JES	43
05/11/11	JES	44
06/11/11	JES	45
07/11/11	JES	46
08/11/11	JES	47
09/11/11	JES	48
10/11/11	JES	49
11/11/11	JES	50
12/11/11	JES	51
01/11/12	JES	52
02/11/12	JES	53
03/11/12	JES	54
04/11/12	JES	55
05/11/12	JES	56
06/11/12	JES	57
07/11/12	JES	58
08/11/12	JES	59
09/11/12	JES	60
10/11/12	JES	61
11/11/12	JES	62
12/11/12	JES	63
01/11/13	JES	64
02/11/13	JES	65
03/11/13	JES	66
04/11/13	JES	67
05/11/13	JES	68
06/11/13	JES	69
07/11/13	JES	70
08/11/13	JES	71
09/11/13	JES	72
10/11/13	JES	73
11/11/13	JES	74
12/11/13	JES	75
01/11/14	JES	76
02/11/14	JES	77
03/11/14	JES	78
04/11/14	JES	79
05/11/14	JES	80
06/11/14	JES	81
07/11/14	JES	82
08/11/14	JES	83
09/11/14	JES	84
10/11/14	JES	85
11/11/14	JES	86
12/11/14	JES	87
01/11/15	JES	88
02/11/15	JES	89
03/11/15	JES	90
04/11/15	JES	91
05/11/15	JES	92
06/11/15	JES	93
07/11/15	JES	94
08/11/15	JES	95
09/11/15	JES	96
10/11/15	JES	97
11/11/15	JES	98
12/11/15	JES	99
01/11/16	JES	100

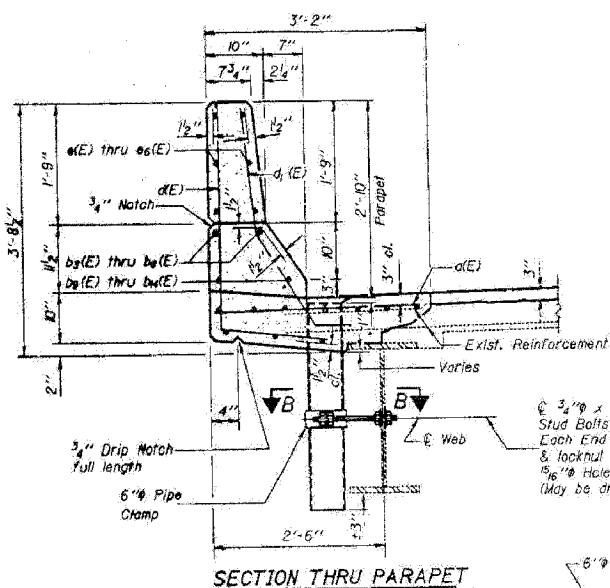


PARAPET ELEVATION
(Showing inside face)

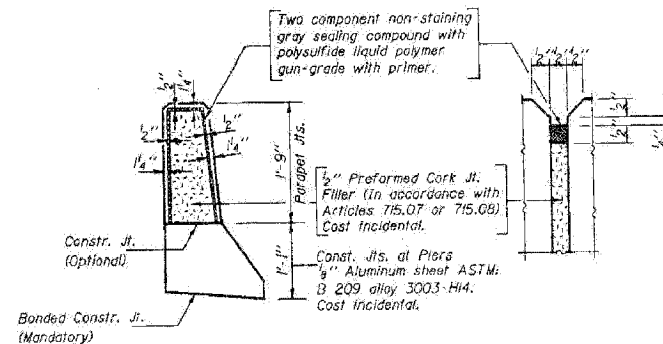
Notes: Reinforcement bars designated (E) shall be epoxy coated.
Bars indicated thus 1 x 2-#5 etc. indicates 1 line of bars with 2 lengths per line.
Work this sheet with sheet #4 & 6.

MIN BAR LAPS

#5 Bar = 2'-2"
#8 Bar = 4'-6"

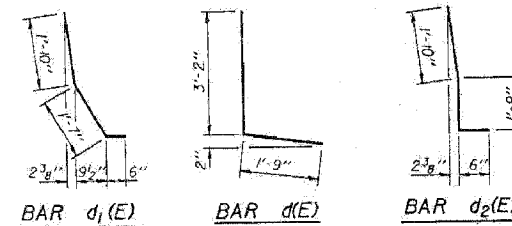


SECTION THRU PARAPET

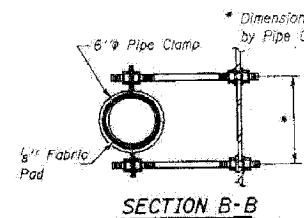


PARAPET JOINT DETAILS

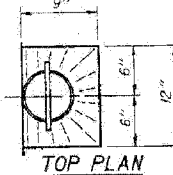
Notes:
The exterior surfaces of the Floor Drain shall be painted with the basic lead silico chromate painting specified for Structural Steel. The exterior surface of the Aluminum tube shall be cleaned and given a washcoat pretreatment in accordance with Steel Structures Painting Council's Spec. SSPC-SP1 & SSPC-Paint 27 prior to painting.
Fiberglass pipe shall conform to ASTM D2998, with short-time rupture strength hoop tensile stress of 30,000 p.s.i. minimum. The surface of the Fiberglass pipe shall be free of bond inhibiting agents.



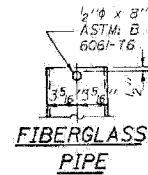
DESIGNED	Mary Blozdorf	EXAMINED	[Signature]
CHECKED	[Signature]	PASSED	[Signature]
DRAWN	Joe Sutherland	APPROVED	[Signature]
CHECKED	[Signature]		



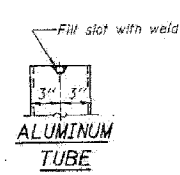
SECTION B-B



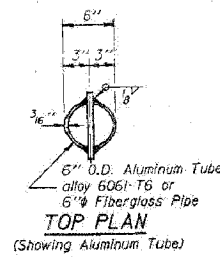
TOP PLAN



FIBERGLASS PIPE



ALUMINUM TUBE



TOP PLAN
(Showing Aluminum Tube)

SUPERSTRUCTURE DETAILS
F.A.I. RT. 80 SEC. (06-8HBR)
BUREAU COUNTY
STATION 312+11.90

EXISTING PLANS - 1985
IL ROUTE 89 OVER
FAI ROUTE 80 (I-80)
SECTION 06-8HBR
BUREAU COUNTY
STATION 3702+69.82
STRUCTURE NO. 006-0178

FOR INFORMATION ONLY