

STATE OF ILLINOIS
DEPARTMENT OF TRANSPORTATION

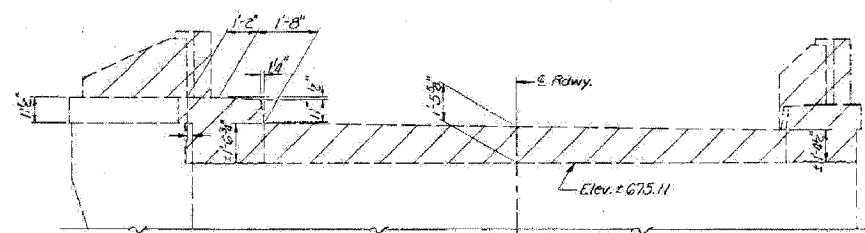
ROUTE NO.	SECTION	COUNTY	SHEET NO.	SHEET TOTAL
FAI 80	06-8HBR	BUREAU	165	109
FED. ROAD DIST. NO. 7		ILLINOIS	CONTRACT PROJECT	

Contract # 66641

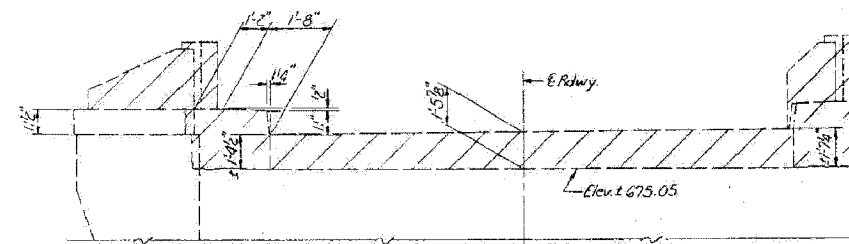
STATE OF ILLINOIS
DEPARTMENT OF TRANSPORTATION

ROUTE NO.	SECTION	COUNTY	SHEET NO.	SHEET TOTAL
FAI 80	06-8HBR	BUREAU	36	53
FED. ROAD DIST. NO. 7		ILLINOIS	CONTRACT PROJECT	

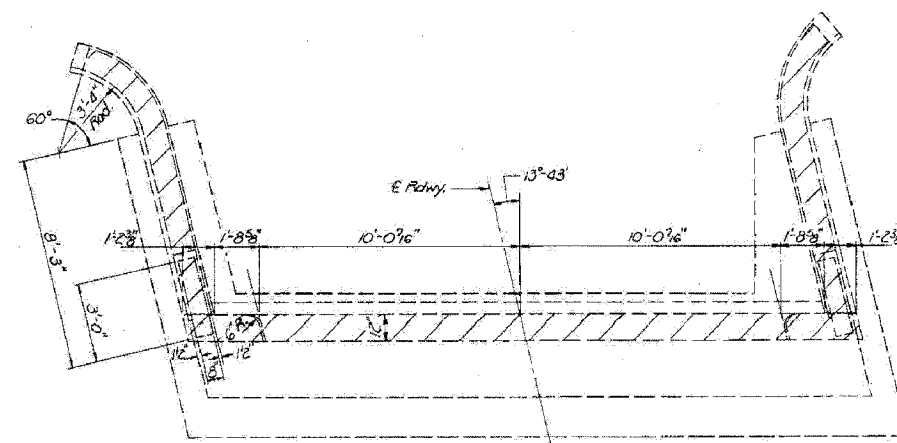
SHEET NO. 7
10 SHEETS



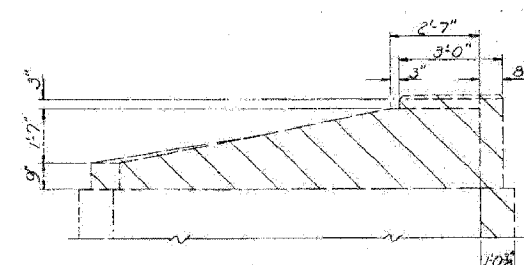
ELEVATION
North Abut. Looking North East Structure
South Abut. Looking South West Structure



ELEVATION
North Abut. Looking North West Structure
South Abut. Looking South East Structure



PLAN
Typ. for all Abutments



WING ELEVATION
Typ. for all Wingwalls.

BILL OF MATERIAL

Item	Unit	Total
Concrete Removal	cu. yd.	13

Note: Hatched areas indicate Concrete Removal

DESIGNED <i>Mary Blaxdorf</i>	EXAMINED <i>May 2 1985</i>
CHECKED <i>Lance Gidd</i>	PASSED <i>[Signature]</i>
DRAWN <i>Joe Sutherland</i>	APPROVED <i>[Signature]</i>
CHECKED <i>Lance Gidd</i>	DIRECTOR OF HIGHWAYS

ABUTMENT CONCRETE REMOVAL
FAI, RT. 80 SEC. 06-8HBR)M
BUREAU COUNTY
STATION 312+11.90

EXISTING PLANS - 1985
IL ROUTE 89 OVER
FAI ROUTE 80 (I-80)
SECTION 06-8HBR
BUREAU COUNTY
STATION 3702+69.82
STRUCTURE NO. 006-0178

FOR INFORMATION ONLY

PLOT DATE = 6/16/2007
FILE NAME = G:\PROJECT\28648891_002\CGDD\1189_mxl\1495_07.dgn
PLOT SCALE = N/A
USER NAME = zhangyb

