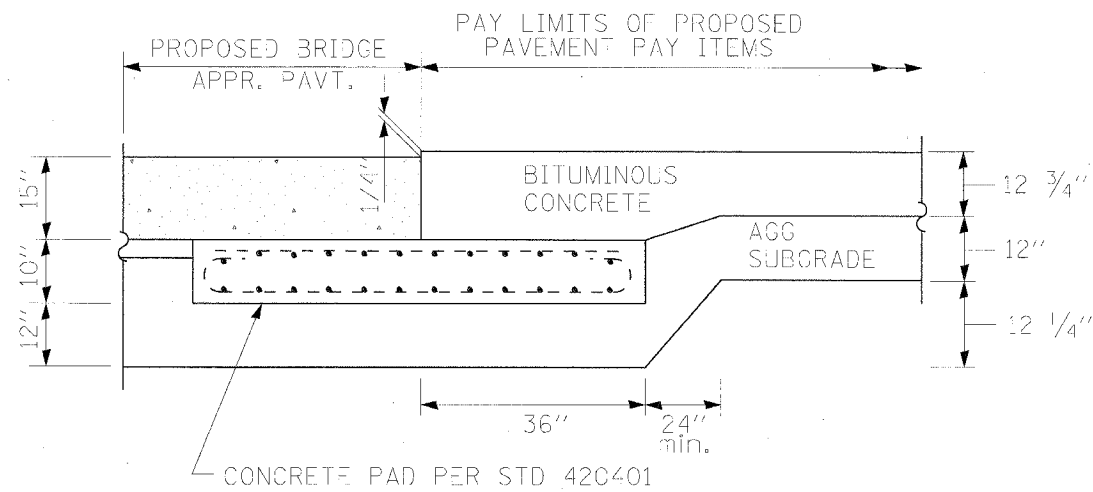


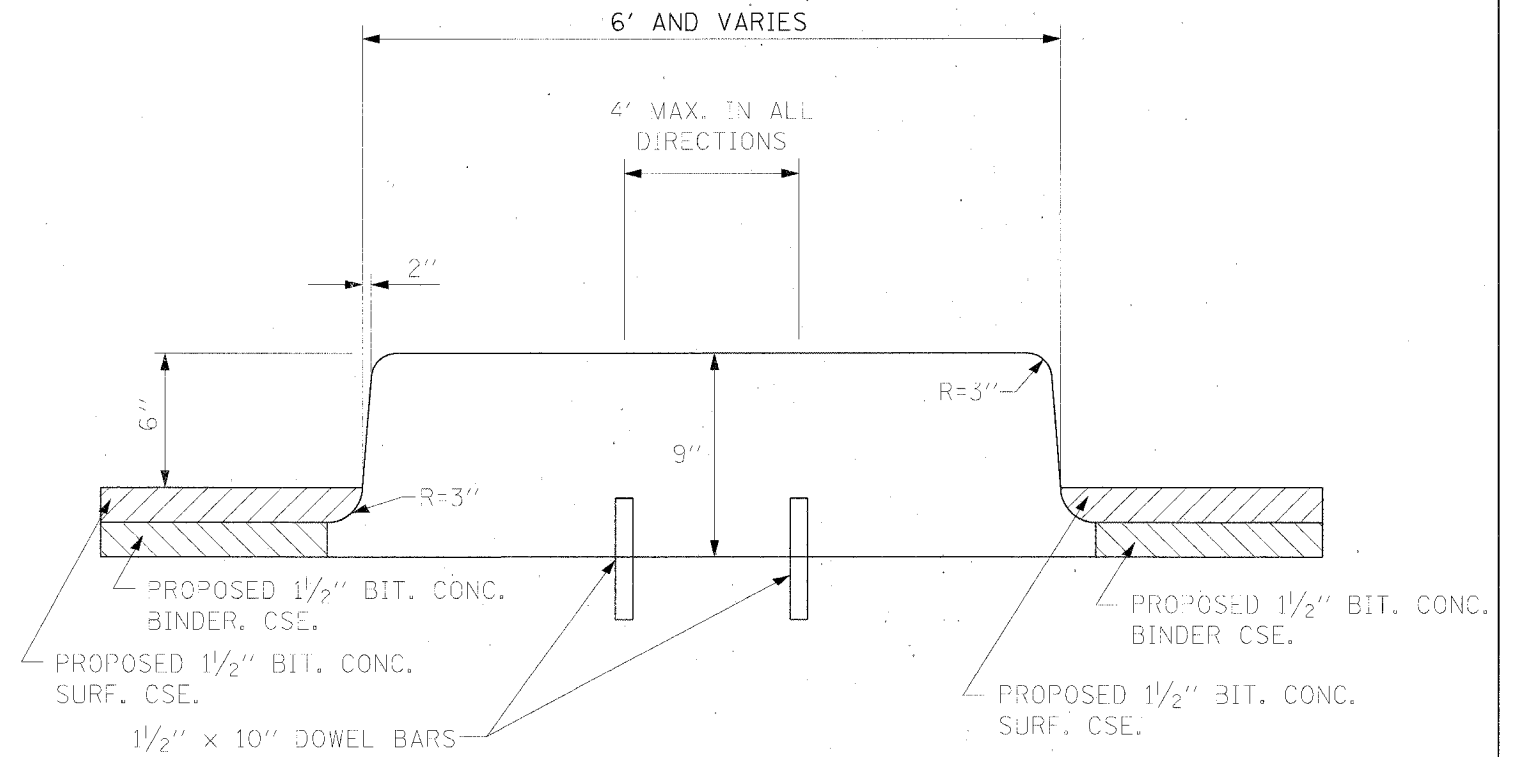
F.A.I. RTE.	SECTION	COUNTY	TOTAL SHEETS	SHEET NO.
80	06-8HBR	BUREAU	165	113
STA.		TO STA.		
FED. ROAD DIST. NO. 3 ILLINOIS FED. AID PROJECT				



BRIDGE APPROACH/PAVEMENT TRANSITION

STATION 239+39.5 (SOUTH OF BRIDGE)

STATION 242+14.1 (NORTH OF BRIDGE)



ISLAND PAVEMENT (SPECIAL)

REVISIONS	
NAME	DATE

ILLINOIS DEPARTMENT OF TRANSPORTATION
IL ROUTE 89 OVER I-80

ROADWAY DETAILS

VERT. NONE
SCALE: HORIZ. 1" = 20'
DATE: 08/10/07

DRAWN BY ACE/CAD
CHECKED BY TMH