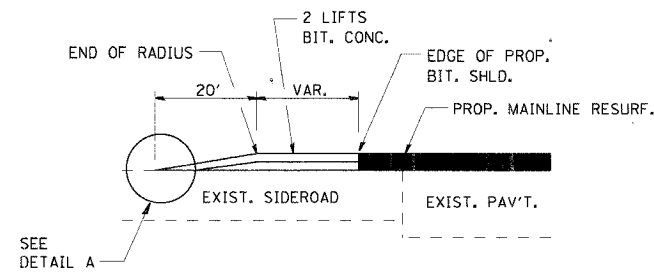
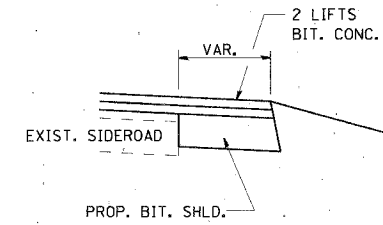


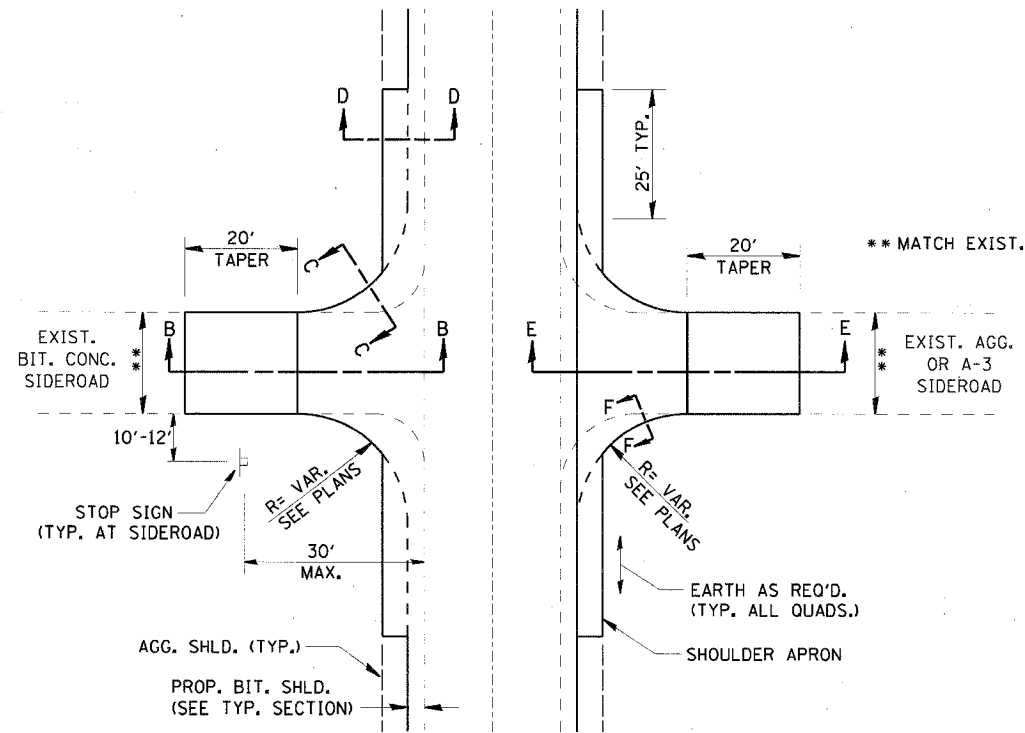
F.A.I. RTE.	SECTION	COUNTY	TOTAL SHEETS	SHEET NO.
80	06-8HBR	BUREAU	165	116
STA.		TO STA.		
FED. ROAD DIST. NO. 3		ILLINOIS FED. AID PROJECT		



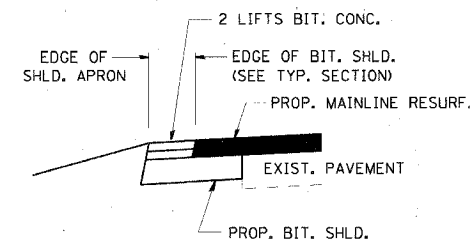
**SECTION B-B**



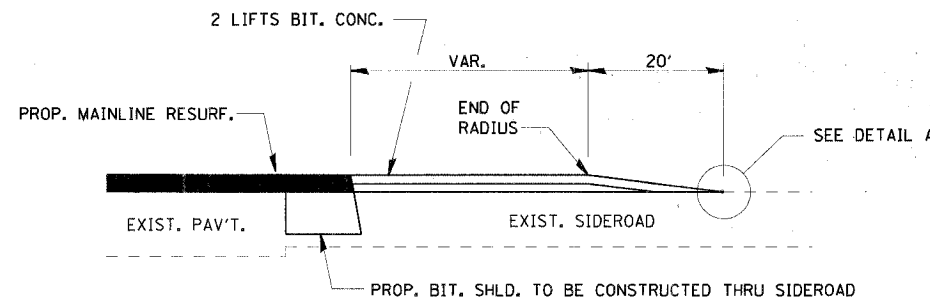
**SECTION C-C**



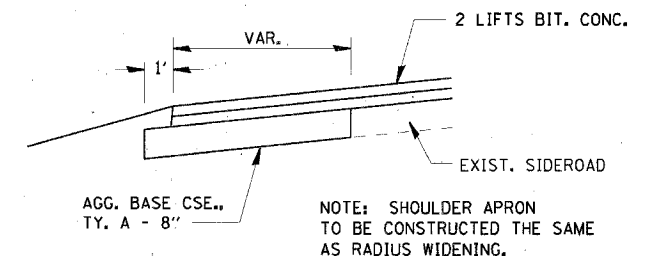
**SIDEROAD DETAIL**



**SECTION D-D**



**SECTION E-E**



**SECTION F-F**

NOTE: SHOULDER APRON TO BE CONSTRUCTED THE SAME AS RADIUS WIDENING.

REVISIONS	
NAME	DATE

ILLINOIS DEPARTMENT OF TRANSPORTATION  
IL ROUTE 89 OVER I-80

DISTRICT 3 DETAILS

SCALE: VERT. NONE  
HORIZ. 1" = 20'  
DATE: 08/10/07

DRAWN BY ACE/CAD  
CHECKED BY TMH