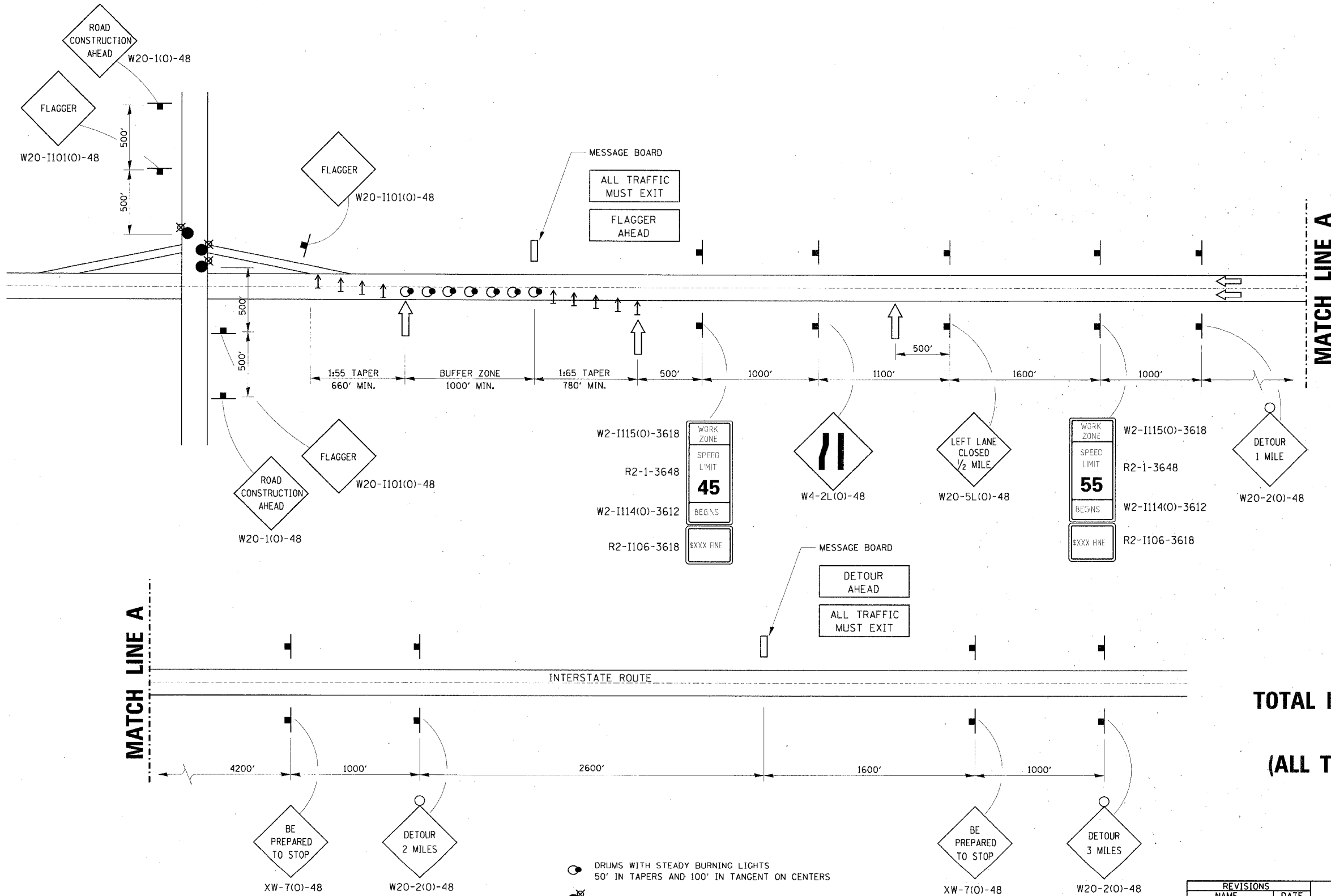


F.A.I. RTE.	SECTION	COUNTY	TOTAL SHEETS	SHEET NO.
80	06-BHBR	BUREAU	165	121
STA.		TO STA.		
FED. ROAD DIST. NO. 3		ILLINOIS FED. AID PROJECT		



**TOTAL INTERSTATE CLOSURE
AT NIGHT
(ALL TRAFFIC MUST EXIT)
701-1**

- DRUMS WITH STEADY BURNING LIGHTS
50' IN TAPERS AND 100' IN TANGENT ON CENTERS
- LIGHTED FLAGGER STATIONS
- ← ARROWBOARD
- ↑ DIRECTION INDICATOR BARRICADE

REVISIONS	
NAME	DATE

ILLINOIS DEPARTMENT OF TRANSPORTATION
IL ROUTE 89 OVER I-80

DISTRICT 3 DETAILS

VERT. NONE
SCALE: HORIZ. 1" = 20'
DATE: 08/10/07

DRAWN BY ACE/CAD
CHECKED BY TMH

PLOT DATE = 8/17/2007
FILE NAME = g:\projects\2007\8891_0802\cadd\89overi80.dwg
PLOT SCALE = 80.0000 / IN.
USER NAME = zbranid

