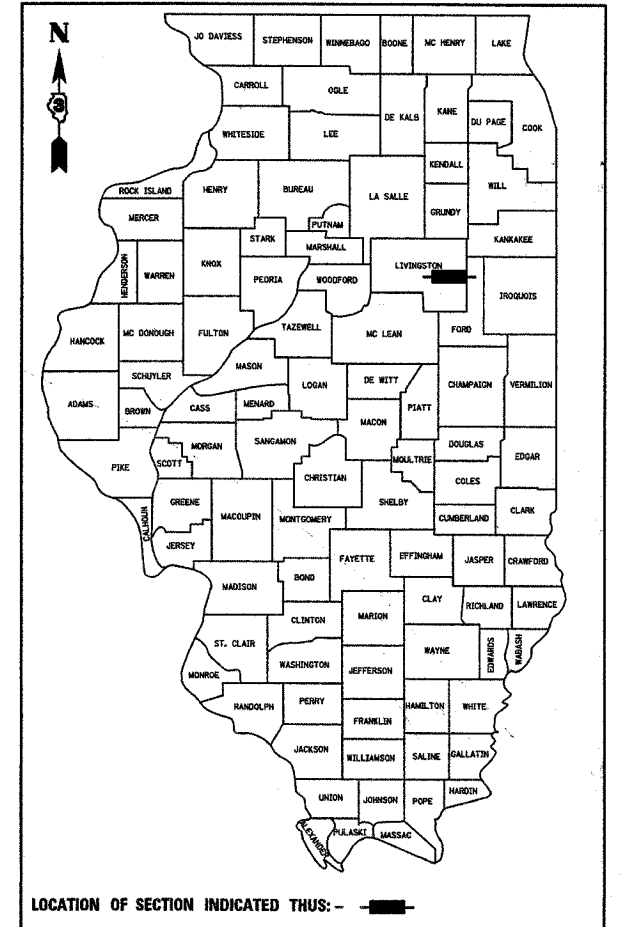


F.A.P. RTE.	SECTION	COUNTY	TOTAL SHEETS	SHEET NO.
681	115 BR	LIVINGSTON	32	1

P-93-038-04
D-93-047-06



STATE OF ILLINOIS
DEPARTMENT OF TRANSPORTATION
DIVISION OF HIGHWAYS

**PROPOSED
HIGHWAY PLANS**

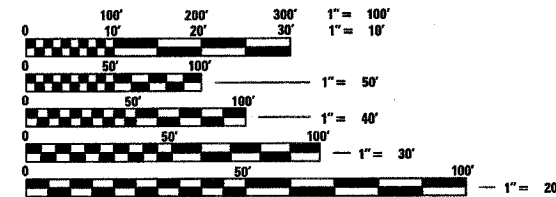
FAP ROUTE 681 (IL ROUTE 116)
SECTION 115 BR
PROJECT ACF-0681(033)
LIVINGSTON COUNTY

C - 93 - 011 - 07

IL ROUTE 116 OVER UNNAMED DRAINAGE DITCH
REPLACEMENT OF EXISTING BRIDGE WITH A DOUBLE PRECAST
BOX CULVERT AND RAISING THE PROFILE GRADE OF THE ROADWAY.

INDEX OF SHEETS

SHEET NO.	ITEM
1	COVER SHEET
2	GENERAL NOTES, COMMITMENTS & HIGHWAY STANDARDS
3	SUMMARY OF QUANTITIES
4	TYPICAL SECTIONS
5	SCHEDULE OF QUANTITIES
6-8	PLAN & PROFILE SHEETS
9-14	STAGE CONSTRUCTION & TRAFFIC CONTROL
15	EROSION CONTROL & PAVEMENT MARKING PLANS
16	ROW PLANS
17-20	CULVERT PLANS & STRUCTURE BORINGS
21-25	EXISTING STRUCTURE PLANS
26-27	DETAILS
28-32	CROSS SECTIONS



FULL SIZE PLANS HAVE BEEN PREPARED USING STANDARD
ENGINEERING SCALES, REDUCED SIZED PLANS WILL NOT
CONFORM TO STANDARD SCALES, IN MAKING MEASUREMENTS
ON REDUCED PLANS, THE ABOVE SCALES MAY BE USED.

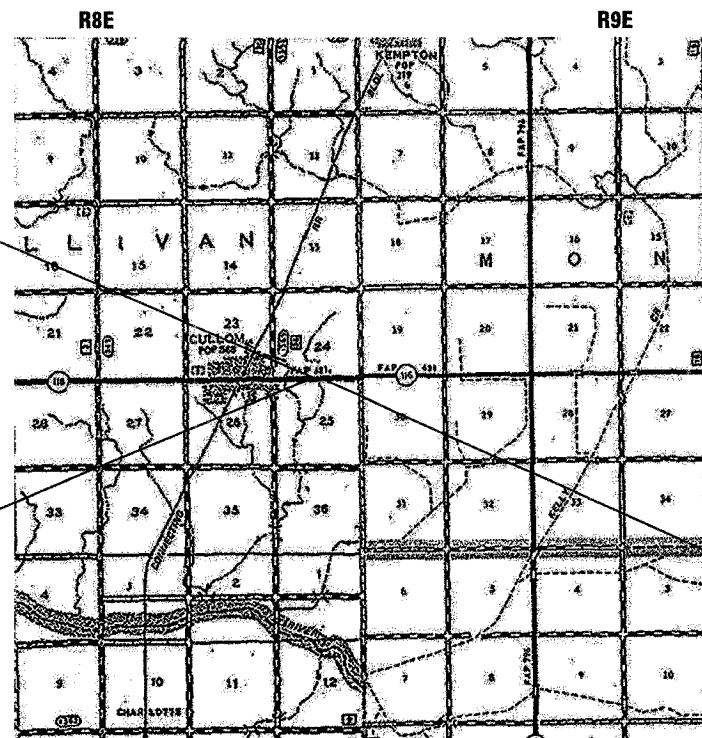
MICROFILMED _____
REEL NUMBER _____
AWARDED _____
RESIDENT ENGINEER _____
AS BUILT CHANGES WERE MADE
ON THE FOLLOWING SHEETS _____

J.U.L.I.E.
JOINT UTILITY LOCATION INFORMATION FOR EXCAVATION
1-800-892-0123

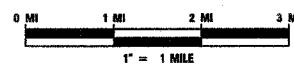
DISTRICT 3 NO. (815) 434-6131

PROJECT ENGINEER: DAVE BROVIAK
UNIT CHIEF: SCOTT FERGUSON

CONTRACT NO. 66690



LOCATION MAP



GROSS LENGTH = 1165 FT. = 0.22 MI.
NET LENGTH = 1165 FT. = 0.22 MI.

STATION 126 + 00.00
DOUBLE 9'x4' PRECAST
CONCRETE BOX CULVERT
EXIST. S.N. 053-0105
PROP. S.N. 053-2568

BEGIN IMPROVEMENT
STA. 121 + 50.00

END IMPROVEMENT
STA. 133 + 15.00

FUNCTIONAL CLASSIFICATION

RURAL MINOR ARTERIAL - F.A.P. 681 (IL RTE. 116)
ADT 1,450 (2009)
PV = 84.0%
SU = 6.7%
MU = 9.3%
DESIGN SPEED = 55 MPH
POSTED SPEED = 55 MPH

STATE OF ILLINOIS
DEPARTMENT OF TRANSPORTATION
DIVISION OF HIGHWAYS

SUBMITTED Aug. 27 20 07
George Ryan
DEPUTY DIRECTOR OF HIGHWAYS, REGION ENGINEER
October 12, 20 07
Eric E. Harman
ENGINEER OF DESIGN AND ENVIRONMENT
October 12, 20 07
Milton L. Seay
DIRECTOR OF HIGHWAYS, CHIEF ENGINEER

PRINTED BY THE AUTHORITY
OF THE STATE OF ILLINOIS