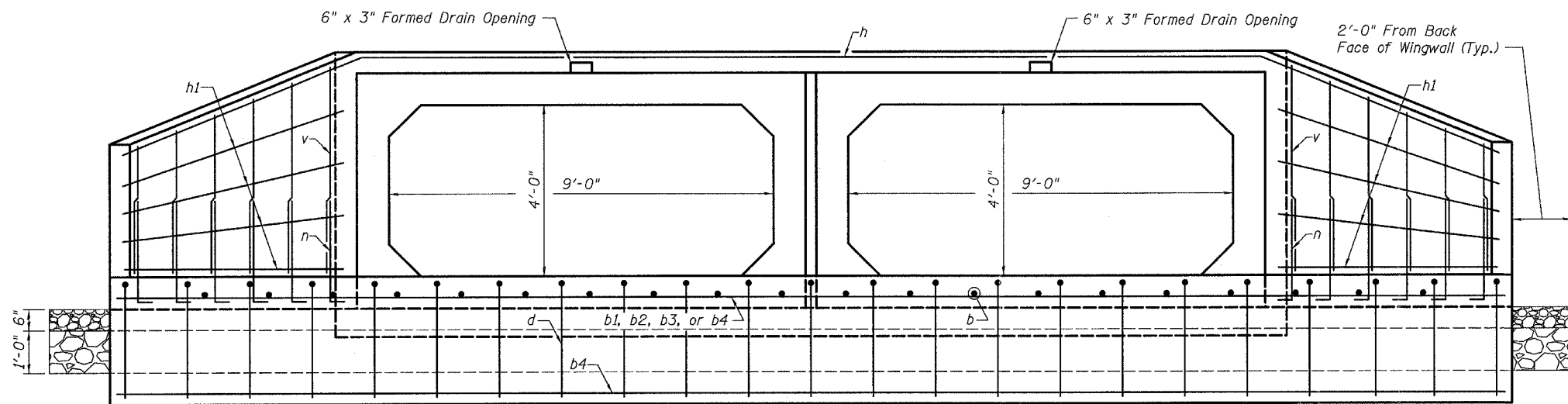


STATE OF ILLINOIS  
DEPARTMENT OF TRANSPORTATION

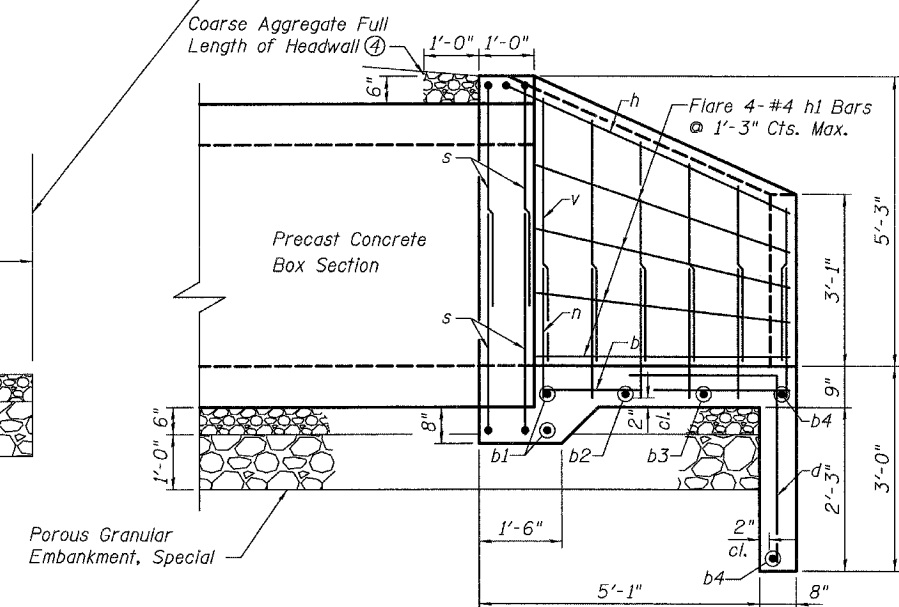
Pay Limits for Structure  
Excavation and Porous  
Granular Embankment, Special

ROUTE NO. FAP 681	SECTION 115 BR	COUNTY LIVINGSTON	TOTAL SHEETS 32	SHEET NO. 18	SHEET NO. 2 4 SHEETS
FED. ROAD DIST. NO. 7		ILLINOIS	FED. AID PROJECT		

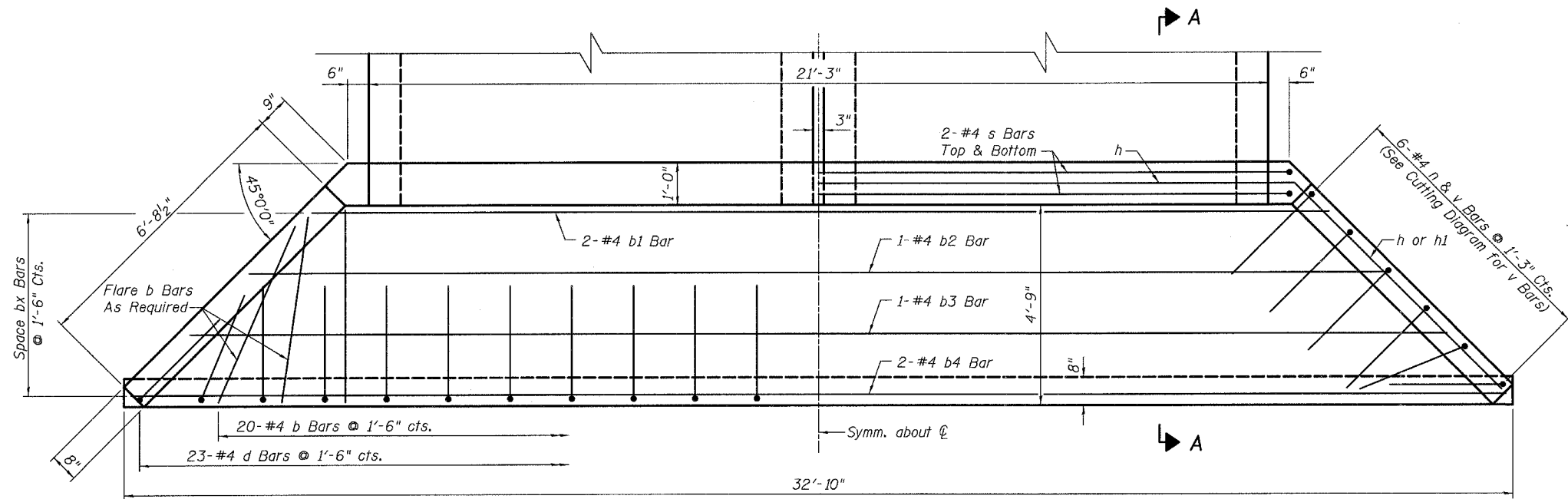
Contract #66690



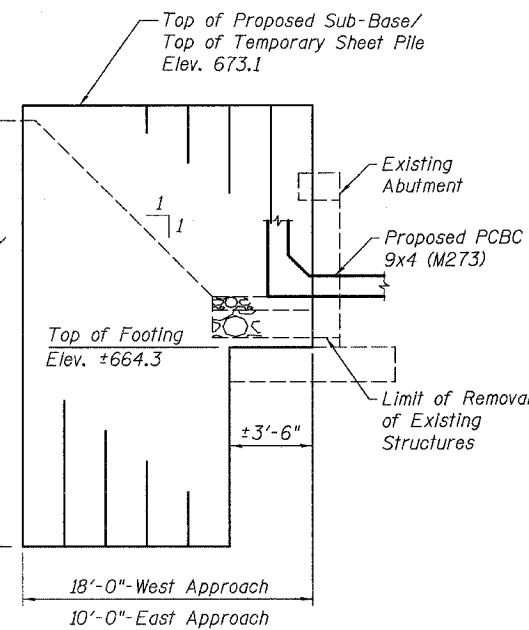
END ELEVATION



SECTION A-A



PLAN

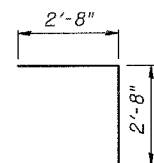


TEMPORARY SHEET PILE DETAIL

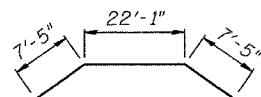
BILL OF MATERIAL  
(Two End Sections)

Bar	No.	Size	Length	Shape	
b	40	#4	4'-5"	—	
b1	4	#4	23'-6"	—	
b2	2	#4	26'-6"	—	
b3	2	#4	29'-6"	—	
b4	4	#4	32'-6"	—	
d	46	#4	5'-4"	—	
h	2	#4	36'-11"	—	
h1	16	#4	7'-0"	—	
n	24	#4	5'-4"	—	
s	8	#4	30'-5"	—	
v	12	#4	7'-11"	—	
Reinforcement Bars				Pound	950
Concrete Structures				Cu. Yd.	17.5

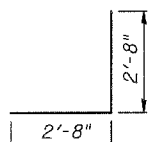
Minimum Tip Elev. Temporary Sheet Piling Elev. 657.1



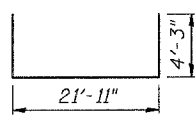
BAR d



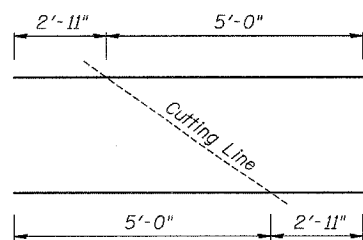
BAR h



BAR n



BAR s



CUTTING DIAGRAM v BARS

Order v Bars full length. Cut bars as shown and use half in one Wingwall and half in the opposite Wingwall.

STATION 126+00  
BUILT 200 BY  
STATE OF ILLINOIS  
F.A.P. RTE. 681 SEC. 115 BR  
LOADING HS20  
STRUCTURE NO. 053-2568

NAME PLATE  
See Std. 515001

- Notes:
- Cast-In-Place Reinforced Concrete End Sections shall be constructed in accordance with Section 542 of the Standard Specifications.
  - Ends of Precast Concrete Box Culvert 9'x4' (M273) sections protruding thru Cast-In-Place Reinforced Concrete End Sections shall be cast without bell or spigot.
  - Bar lap lengths - #4 = 1'-8".
  - Cost of Coarse Aggregate Full Length of Headwall shall be included in the cost of "Concrete Structures".
  - Hard driving may be encountered during the sheet pile installation. The Contractor shall provide the appropriate driving equipment for the soil conditions indicated on the boring logs.

BOX CULVERT END SECTION  
IL 116 OVER DRAINAGE DITCH  
FAP ROUTE 681 - SECTION 115BR  
LIVINGSTON COUNTY  
STATION 126+00.00  
STRUCTURE NO. 053-2568