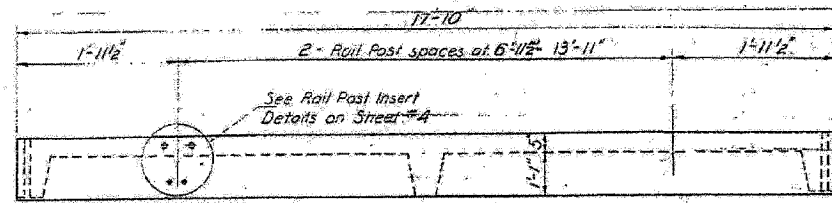


F.A.P. RTE.	SECTION	COUNTY	TOTAL SHEETS	SHEET NO.
681	115 BR	LIVINGSTON	32	23
STA.		TO STA.		
FED. ROAD DIST. NO.		ILLINOIS	FED. AID PROJECT	

STATE OF ILLINOIS  
DEPARTMENT OF PUBLIC WORKS & BUILDINGS  
DIVISION OF HIGHWAYS

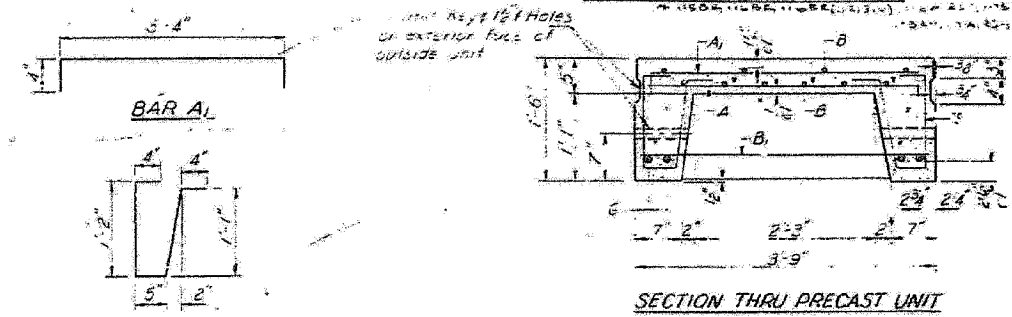
NO.	SECTION	QUANTITY	UNIT	AMOUNT
1	PRECAST CONCRETE BRIDGE SLAB	12.00	LS	36
2	REINFORCEMENT BARS	12.00	LS	36
SHEET NO. 3 5 SHEETS				



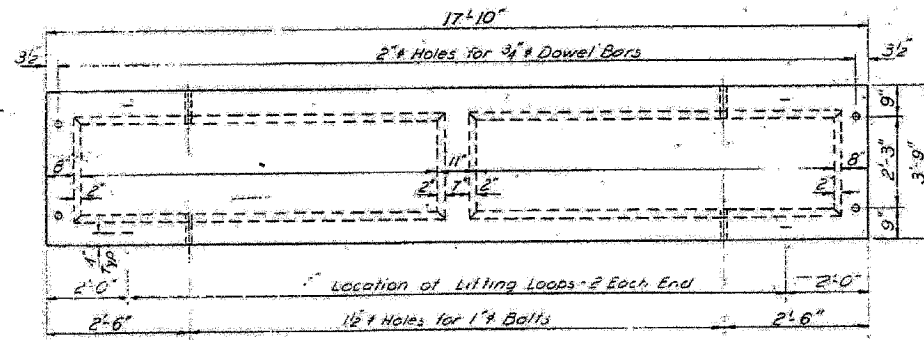
ELEVATION

**BAR LIST - ONE UNIT**  
Reinforcement to be cast into slab

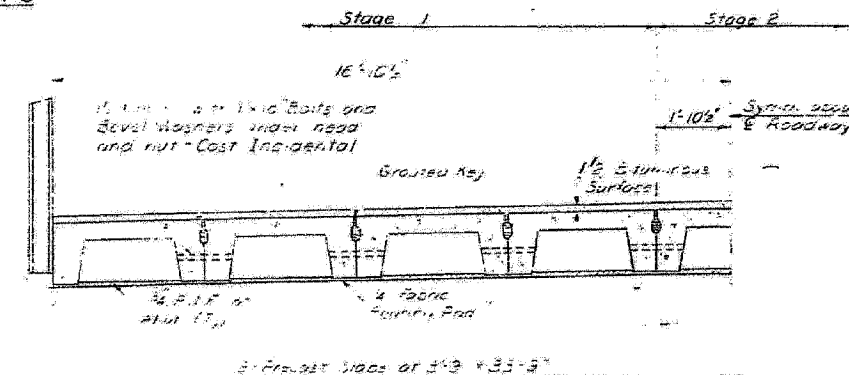
BAR	NO.	SIZE	LENGTH	SHAPE
A	47	#4	3'-3"	
A <sub>1</sub>	24	#4	4'-0"	
B	10	#4	17'-6"	
B <sub>1</sub>	6	#4	3'-6"	
G	4	#10	17'-6"	
S	38	#3	3'-4"	U



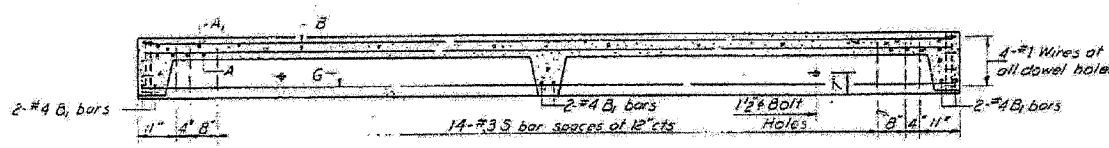
SECTION THRU PRECAST UNIT



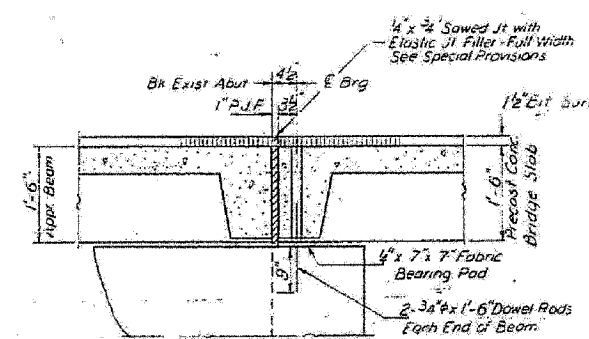
PLAN OF ONE UNIT



HALF CROSS SECTION  
Looking West



LONGITUDINAL SECTION

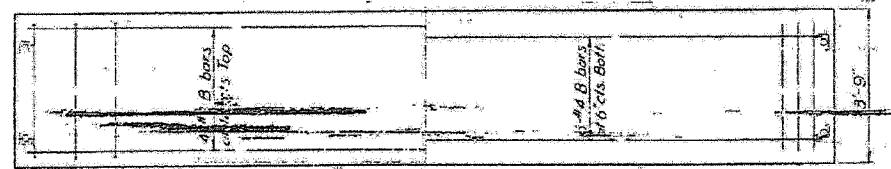


SECTION THRU ABUT.  
AT OUTSIDE BEAM

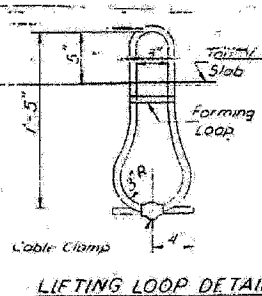
**NOTES**  
Unless otherwise approved by the Engineer, lifting loops shall be 2" x 13" cross wire rope with fiber core and shall have a minimum ultimate strength of 12,000 lbs. Loops shall be turned off after slab has been erected. Holes shall be drilled and anchor dowels grouted in place. Cost of reinforcement and accessories cast into the slab and bearing pads, furnishing, drilling for placing and grouting anchor dowels is included in unit bid price for Precast Concrete Bridge Slab.

**BILL OF MATERIAL**

Item	Unit	Quantity
Precast Concrete Bridge Slab	Sq Ft	602
Removal of Existing Substructure	EACH	1



SLAB REINFORCEMENT



LIFTING LOOP DETAIL

**STRESSES**  
4,500 PSI  
1,800 PSI  
20,000 PSI  
HS-20

**SUPERSTRUCTURE**  
S.B.I. RT.116 SEC.115 BR  
LIVINGSTON COUNTY  
STATION 126+00

DESIGNED	EXAMINED	DATE
CHECKED	ASSED	1970
DRAWN	APPROVED	
CHECKED		

**REVISIONS**

NAME	DATE

NO SCALE SHEET 3 OF 5  
ILLINOIS DEPARTMENT OF TRANSPORTATION  
**EXISTING BRIDGE PLAN FOR INFORMATION ONLY**  
FAP ROUTE 681  
SECTION 115 BR  
LIVINGSTON COUNTY

PLOT DATE = 8/28/2007  
 FILE NAME = H:\V\66690\F115.dwg  
 PLOT SCALE = 28.0000 / IN.  
 USER NAME = RJSER