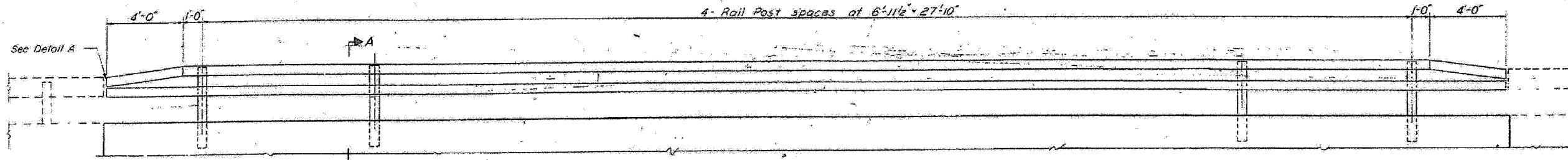


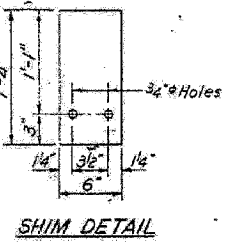
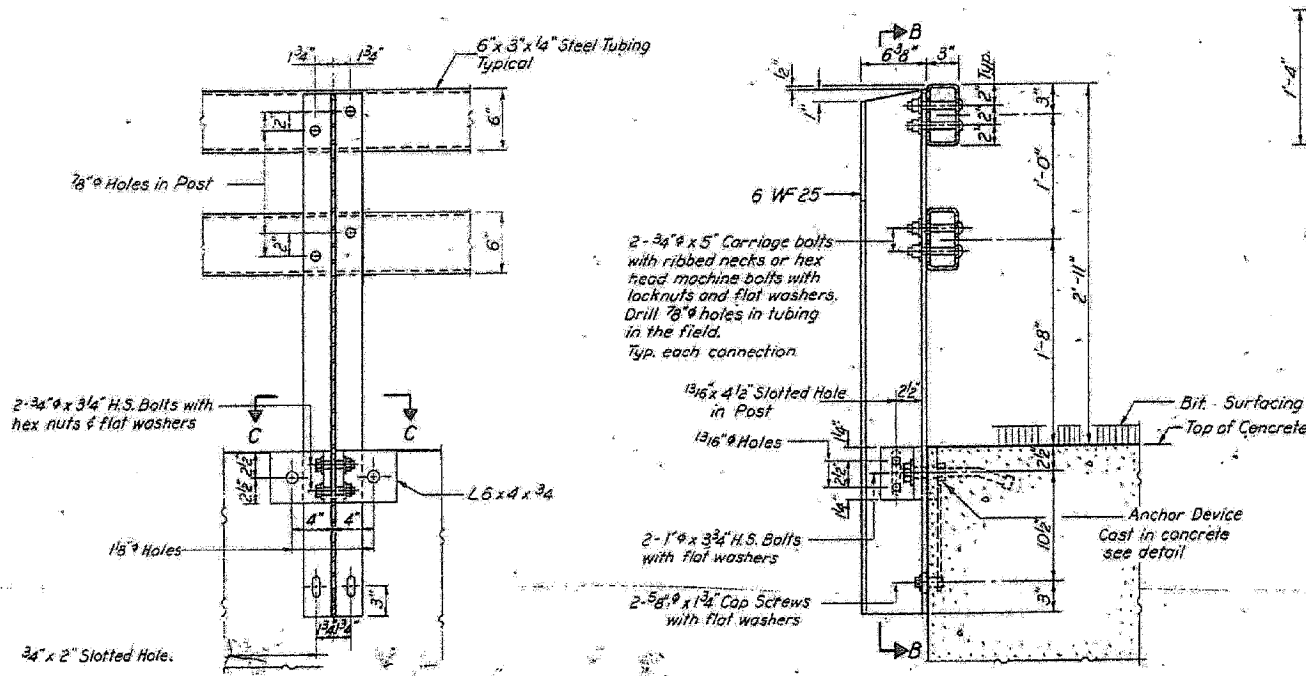
STATE OF ILLINOIS
DEPARTMENT OF PUBLIC WORKS & BUILDINGS
DIVISION OF HIGHWAYS

PROJECT NO.	SECTION	COUNTY	TOTAL SHEETS	SHEET NO.
681	115 BR	LIVINGSTON	32	24

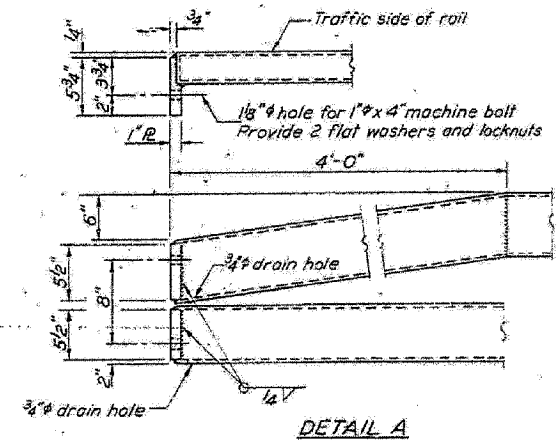
F.A.P. RTE.	SECTION	COUNTY	TOTAL SHEETS	SHEET NO.
681	115 BR	LIVINGSTON	32	24
STA.	TO STA.			
FED. ROAD DIST. NO.	ILLINOIS	FED. AID PROJECT		



ELEVATION
Showing inside face of railing



SHIM DETAIL



DETAIL A

NOTES

Hollow structural steel tubing shall conform to the requirements of ASTM designation A-501 "Hot Formed Welded and Seamless Carbon Steel Structural Tubing."

All other steel shapes and plates shall conform to the requirements of ASTM designation A-36 except posts shall conform to ASTM A-441.

Bolts, cap screws, and nuts shall conform to the requirements of ASTM designation A-307 except for high strength bolts, nuts and washers noted which shall conform to ASTM designation A-325.

All bolts, nuts, cap screws, washers and lock washers shall be galvanized in accordance with ASTM designation A-153.

All posts, railing, rail splices, anchor devices and angles shall be galvanized after shop fabrication in accordance with ASTM designation A-123 and A-385. Galvanized rail shall not be painted.

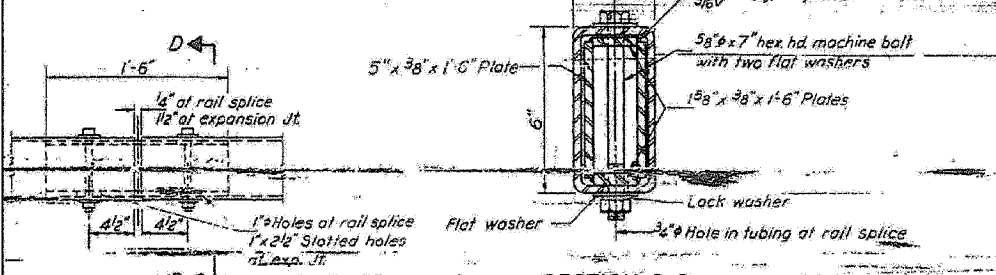
Railing shall be in accordance with Section 508 of the Standard Specifications, except as noted, and shall be paid for at the contract unit price per lineal foot for STEEL RAILING, TYPE N

All field drilled holes shall be coated with an approved zinc rich paint before erection.

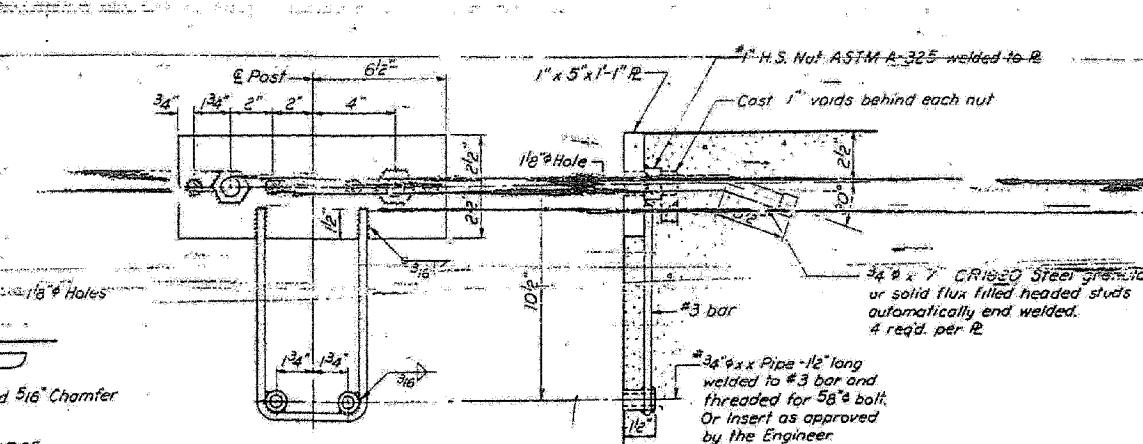
The lower portion of the post flange in contact with concrete shall receive two coats of asphalt paint conforming to Section 714.08 Type B or place 1/8" fabric bearing pad between the post and concrete.

The 3/4" high strength bolts used to connect the 6x4x3/8 angles to the post shall be tightened in accordance with Article 710.11 of the Standard Specifications. The 1" high strength bolts connecting the angles to the concrete beam shall be tightened to a snug fit and given an additional 1/8 turn.

For multi-span bridges, sufficient 1/2" x 6" x 1-4" galvanized steel shims shall be provided to align rail between adjacent spans. Cast incidental to Steel Railing.



RAIL SPLICE



ANCHOR DEVICE

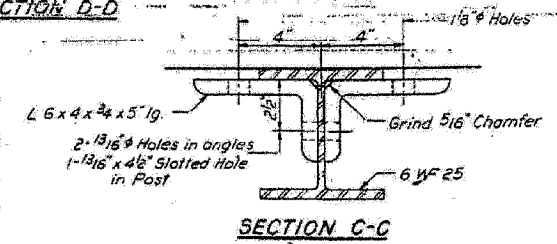
BILL OF MATERIAL

Item	Unit	Quantity
STEEL RAILING, TYPE N	Lin. Ft.	76

TYPE N
STEEL RAILING
S.B.I. RT.116 SEC.115 BR
LIVINGSTON COUNTY
STATION 126+00

DESIGNED	R. P. Summer
CHECKED	R. P. S.
DRAWN	J.L. Armstrong
CHECKED	R. P. S.

EXAMINED	Nov 17 1970
PASSED	
APPROVED	



SECTION C-C

EXISTING BRIDGE PLAN
FOR INFORMATION ONLY

FAP ROUTE 681
SECTION 115 BR
LIVINGSTON COUNTY

REVISIONS	
NAME	DATE

PLOT DATE = 06/28/2007
FILE NAME = H:\P\66690\F115 BR.dwg
PLOT SCALE = 28.0000 / 1
USER NAME = JUSER