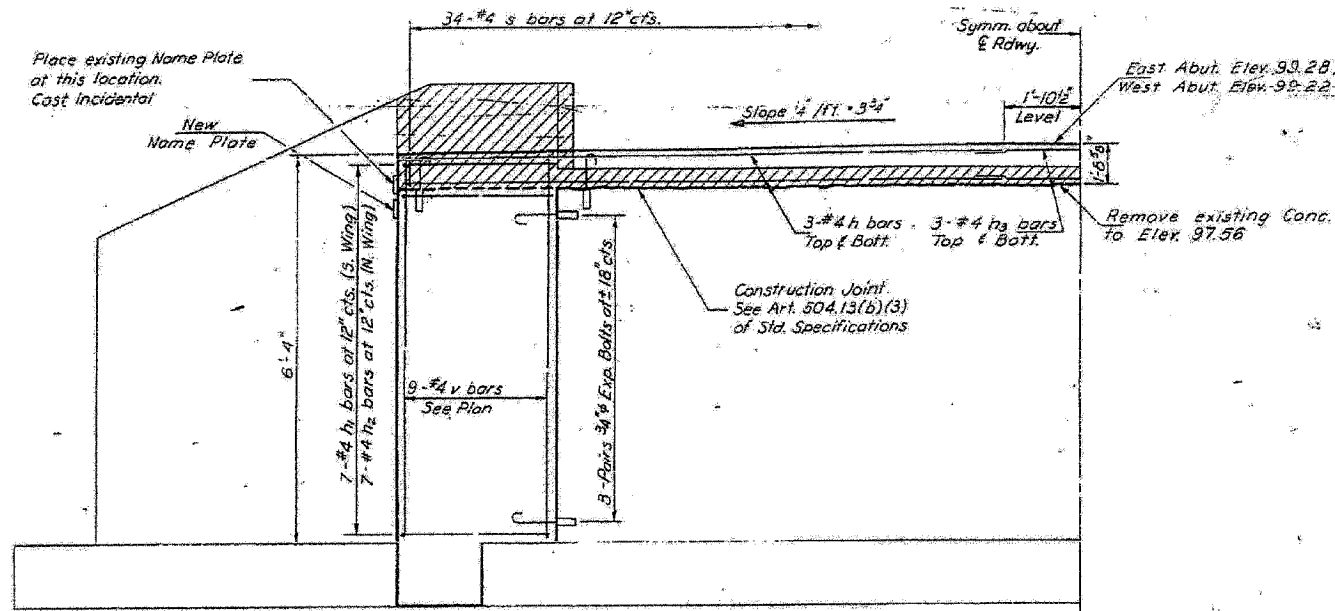


STATE OF ILLINOIS
DEPARTMENT OF PUBLIC WORKS & BUILDINGS
DIVISION OF HIGHWAYS

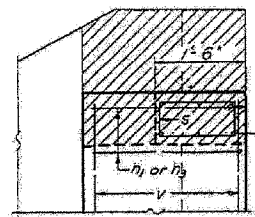
DESIGN NO.	SECTION	COUNTY	TOTAL SHEETS	SHEET NO.
681	115 BR	LIVINGSTON	32	25

F.A.P. RTE.	SECTION	COUNTY	TOTAL SHEETS	SHEET NO.
681	115 BR	LIVINGSTON	32	25

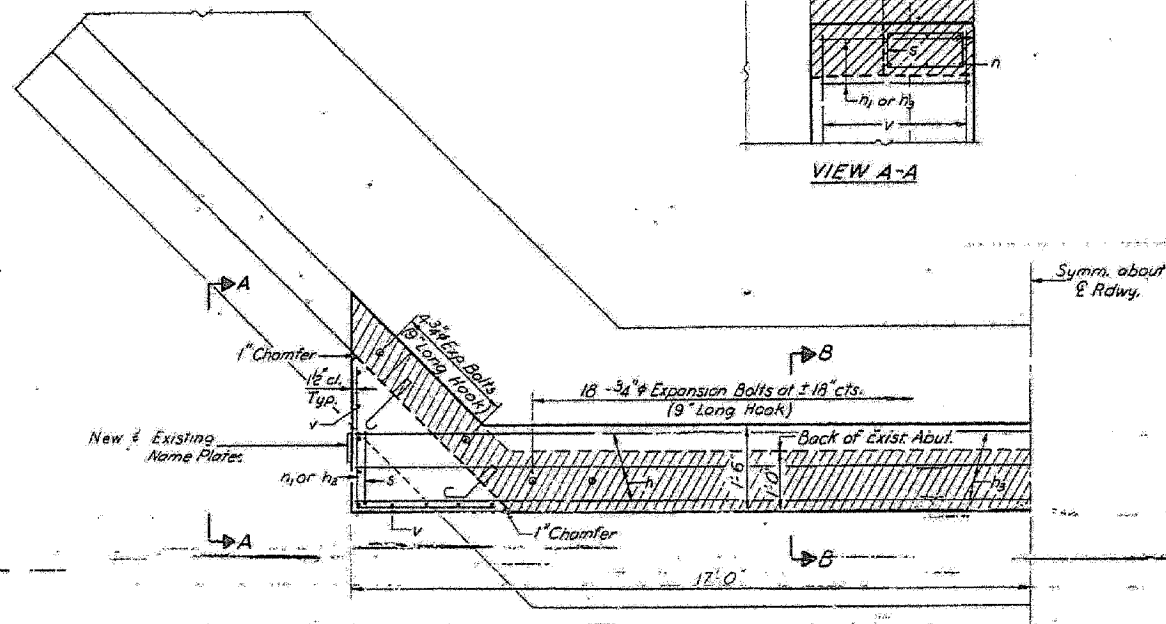
STA.	TO STA.
FED. ROAD DIST. NO.	ILLINOIS FED. AID PROJECT



ELEVATION

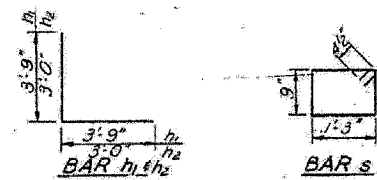


VIEW A-A



PLAN

NOTES:
Hatched area indicates Concrete Removal. Reinforcement extending into removed areas shall be steamed and incorporated into the new construction.
Expansion bolts shall be anchored in sound concrete.
All edges shall have standard 3/4" chamfers except as noted.



ITEMS

Bar	No.	Size	Length	Shape
n	12	#4	6'-0"	L
h1	14	#2	7'-6"	L
h2	14	#4	6'-0"	L
h3	12	#4	10'-0"	L
s	60	#4	4'-5"	□
v	36	#2	6'-0"	—

Class A Concrete	Cu Yds.	72.2
Reinforcement Bars	Lbs.	770
Expansion Bolts 3/4"	Each	76

ABUTMENTS
S.B.T. RT. 116 SEC. 115 BR
LIVINGSTON COUNTY
STATION 125+00

REVISIONS	
NAME	DATE

ILLINOIS DEPARTMENT OF TRANSPORTATION

EXISTING BRIDGE PLAN
FOR INFORMATION ONLY

FAP ROUTE 681
SECTION 115 BR
LIVINGSTON COUNTY

PLOT DATE = 8/20/2007
FILE NAME = H:\P\26690\F115B.dwg
PLOT SCALE = 25/8000 = 1/320
USER NAME = RJS/BJ

DESIGNED	<i>R. P. Summer</i>	EXAMINED	<i>[Signature]</i> NOV 17 1910
CHECKED	<i>R. P. Summer</i>	PASSED	
DRAWN	<i>R. P. Summer</i>	APPROVED	
CHECKED	<i>[Signature]</i>		