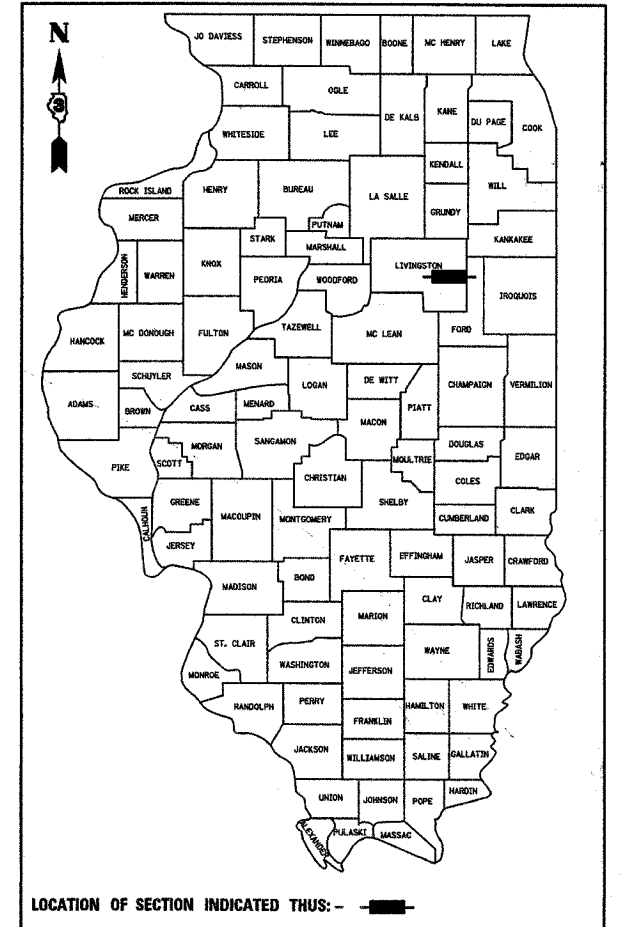


F.A.P. RTE.	SECTION	COUNTY	TOTAL SHEETS	SHEET NO.
681	115 BR	LIVINGSTON	32	1

P-93-038-04  
D-93-047-06



STATE OF ILLINOIS  
DEPARTMENT OF TRANSPORTATION  
DIVISION OF HIGHWAYS

**PROPOSED  
HIGHWAY PLANS**

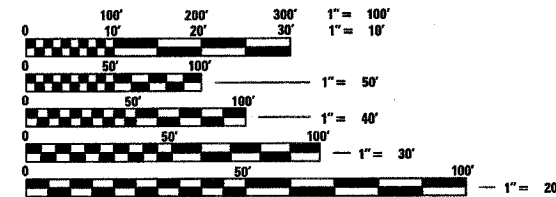
FAP ROUTE 681 (IL ROUTE 116)  
SECTION 115 BR  
PROJECT ACF-0681(033)  
LIVINGSTON COUNTY

C - 93 - 011 - 07

IL ROUTE 116 OVER UNNAMED DRAINAGE DITCH  
REPLACEMENT OF EXISTING BRIDGE WITH A DOUBLE PRECAST  
BOX CULVERT AND RAISING THE PROFILE GRADE OF THE ROADWAY.

**INDEX OF SHEETS**

SHEET NO.	ITEM
1	COVER SHEET
2	GENERAL NOTES, COMMITMENTS & HIGHWAY STANDARDS
3	SUMMARY OF QUANTITIES
4	TYPICAL SECTIONS
5	SCHEDULE OF QUANTITIES
6-8	PLAN & PROFILE SHEETS
9-14	STAGE CONSTRUCTION & TRAFFIC CONTROL
15	EROSION CONTROL & PAVEMENT MARKING PLANS
16	ROW PLANS
17-20	CULVERT PLANS & STRUCTURE BORINGS
21-25	EXISTING STRUCTURE PLANS
26-27	DETAILS
28-32	CROSS SECTIONS



FULL SIZE PLANS HAVE BEEN PREPARED USING STANDARD  
ENGINEERING SCALES, REDUCED SIZED PLANS WILL NOT  
CONFORM TO STANDARD SCALES, IN MAKING MEASUREMENTS  
ON REDUCED PLANS, THE ABOVE SCALES MAY BE USED.

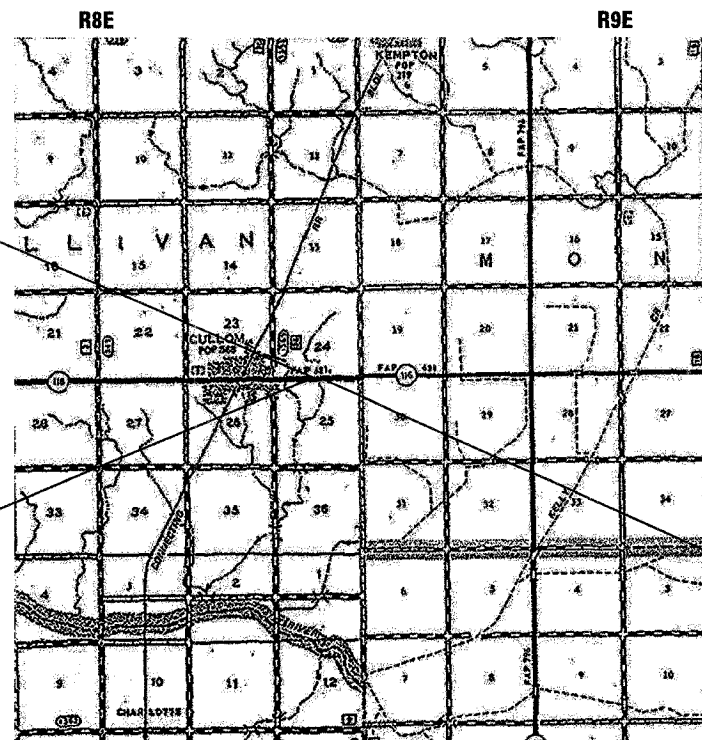
MICROFILMED \_\_\_\_\_  
REEL NUMBER \_\_\_\_\_  
AWARDED \_\_\_\_\_  
RESIDENT ENGINEER \_\_\_\_\_  
AS BUILT CHANGES WERE MADE  
ON THE FOLLOWING SHEETS \_\_\_\_\_

J.U.L.I.E.  
JOINT UTILITY LOCATION INFORMATION FOR EXCAVATION  
1-800-892-0123

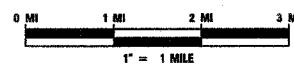
DISTRICT 3 NO. (815) 434-6131

PROJECT ENGINEER: DAVE BROVIAK  
UNIT CHIEF: SCOTT FERGUSON

CONTRACT NO. 66690



LOCATION MAP



GROSS LENGTH = 1165 FT. = 0.22 MI.  
NET LENGTH = 1165 FT. = 0.22 MI.

STATION 126 + 00.00  
DOUBLE 9'x4' PRECAST  
CONCRETE BOX CULVERT  
EXIST. S.N. 053-0105  
PROP. S.N. 053-2568

BEGIN IMPROVEMENT  
STA. 121 + 50.00

END IMPROVEMENT  
STA. 133 + 15.00

**FUNCTIONAL CLASSIFICATION**

RURAL MINOR ARTERIAL - F.A.P. 681 (IL RTE. 116)  
ADT 1,450 (2009)  
PV = 84.0%  
SU = 6.7%  
MU = 9.3%  
DESIGN SPEED = 55 MPH  
POSTED SPEED = 55 MPH

STATE OF ILLINOIS  
DEPARTMENT OF TRANSPORTATION  
DIVISION OF HIGHWAYS

SUBMITTED Aug. 27 20 07

George Ryan  
DEPUTY DIRECTOR OF HIGHWAYS, REGION ENGINEER

October 12, 20 07  
Eric E. Harman  
ENGINEER OF DESIGN AND ENVIRONMENT

October 12, 20 07  
Milton L. Seay  
DIRECTOR OF HIGHWAYS, CHIEF ENGINEER

**PRINTED BY THE AUTHORITY  
OF THE STATE OF ILLINOIS**

F.A.P. RTE.	SECTION	COUNTY	TOTAL SHEETS	SHEET NO.
681	115 BR	LIVINGSTON	32	2
STA.		TO STA.		
FED. ROAD DIST. NO.		ILLINOIS	FED. AID PROJECT	

**GENERAL NOTES**

1. THE THICKNESS OF HMA SHOWN ON THE PLANS IS THE NOMINAL THICKNESS. DEVIATIONS FROM THE NOMINAL THICKNESS WILL BE PERMITTED WHEN SUCH DEVIATIONS OCCUR DUE TO IRREGULARITIES IN THE EXISTING SURFACE OR BASE ON WHICH THE HMA IS PLACED.
2. EXCEPT AS NOTED ON THE PLANS, PAVEMENT GRADES SHOWN ARE AT THE TOP OF PAVEMENT SURFACES.
3. BEFORE ORDERING PIPE CULVERTS OR PIPE DRAINS, THE CONTRACTOR SHALL CONSULT THE ENGINEER FOR EXACT LENGTHS.
4. THE ENGINEER WILL BE THE SOLE JUDGE CONCERNING CURING TIME FOR THE VARIOUS HMA LIFTS.
5. FOR STABILIZATION, ALL TYPE III BARRICADES SHALL REQUIRE A MINIMUM OF FOUR SAND BAGS PER BARRICADE.
6. SEEDING SHALL NOT BE PERMITTED AT ANY TIME WHEN THE GROUND IS FROZEN, WET, OR IN AN UNTILLABLE CONDITION. LOCATIONS TO BE SEEDED WILL BE DETERMINED BY THE ENGINEER.
7. THE FINISHED EARTHWORK SHALL HAVE A VEGETATION SUSTAINING SOIL COVERING THE TOP FOUR INCHES IN AREAS TO BE SEEDED OR SODDED. THE VEGETATION SUSTAINING SOIL REQUIRED WILL NOT BE PAID FOR SEPARATELY BUT SHALL BE INCLUDED IN THE COST OF FURNISHED EXCAVATION.
8. ALL ELEVATIONS REFERRING TO U.S.G.S. MEAN SEA LEVEL DATUM.
9. ABANDONED UNDERGROUND UTILITIES THAT CONFLICT WITH CONSTRUCTION SHALL BE DISPOSED OF OUTSIDE THE LIMITS OF THE RIGHT OF WAY ACCORDING TO ARTICLE 202.03 OF THE STANDARD SPECIFICATIONS AND AS DIRECTED BY THE ENGINEER. THIS WORK WILL NOT BE PAID FOR SEPARATELY, BUT SHALL BE INCLUDED IN THE COST OF EARTH EXCAVATION.
10. ANY REFERENCE TO A STANDARD IN THESE PLANS SHALL BE INTERPRETED TO MEAN THE EDITION AS INDICATED BY THE SUBNUMBER SHOWN IN THE LIST OF STANDARDS INCLUDED IN THESE PLANS.
11. THE FOLLOWING RATES OF APPLICATION HAVE BEEN USED IN CALCULATING PLAN QUANTITIES:

GRANULAR MATERIALS	2.05	TONS / CU YD
BITUMINOUS MAT PRIME COAT	0.08	GAL / SQ YD OR
	0.375	GAL / SQ YD
AGGREGATE PRIME COAT	0.002	TONS / SQ YD
HMA MATERIALS	112	LBS / SQ YD / IN
SHORT TERM PAVEMENT MARKING	10	FT /100 FT OF APPLICATION

12. MEMBERS OF JULIE KNOWN TO BE WITHIN THE LIMITS OF THE IMPROVEMENT ARE:  
FRONTIER COMMUNICATIONS - TELEPHONE  
EASTERN ILLINI ELECTRIC COMPANY - ELECTRIC
13. THE FOLLOWING ITEMS AND APPROXIMATE QUANTITIES ARE INCLUDED IN THE "SCHEDULE OF PRICES" IN ORDER TO ESTABLISH A UNIT COST FOR WORK REQUIRED TO COMPLETE THE FIELD TILE RELOCATION. THE ACTUAL QUANTITY OF EACH ITEM SHALL BE DETERMINED BY THE ENGINEER IN THE FIELD.

EXPLORATION TRENCH, SPECIAL	100	FOOT
STORM SEWERS, CLASS A, TYPE 2, 12"	150	FOOT
STORM SEWER REMOVAL 12"	214	FOOT
MISCELLANEOUS CONCRETE	5	CU YD
FIELD TILE JUNCTION VAULTS, 3' DIA.	4	EACH

**COMMITMENTS**

1. REROUTE EXISTING 12" CONCRETE FIELD TILE AROUND THE PROPOSED STRUCTURE AND BURY WITH JUNCTION VAULTS AT THE RIGHT OF WAY LINES.
2. REMOVE EXISTING WEIRS BOTH UPSTREAM AND DOWNSTREAM OF THE PROJECT. REMOVE OVERFLOW PIPE AT DOWNSTREAM WEIR.
3. RELOCATE FIELD ENTRANCE AT NORTHWEST CORNER OF THE PROJECT TO THE EAST EDGE OF THE PROPERTY CURRENTLY OWNED BY KIP HARMS.

**HIGHWAY STANDARDS**

- 000001-04 - STANDARD SYMBOLS, ABBREVIATIONS AND PATTERNS
- 001001-01 - AREAS OF REINFORCEMENT REBARS
- 001006 - DECIMAL OF AN INCH AND OF A FOOT
- 280001-03 - TEMPORARY EROSION CONTROL SYSTEMS
- 515001-02 - NAME PLATE FOR BRIDGES
- 542401 - METAL END SECTIONS FOR PIPE CULVERTS
- 635011-01 - REFLECTOR MARKER AND MOUNTING DETAILS
- 666001 - RIGHT OF WAY MARKERS
- 667101 - PERMANENT SURVEY MARKERS
- 701301-02 - LANE CLOSURE 2L, 2W - SHORT TIME OPERATIONS
- 701311-02 - LANE CLOSURE 2L, 2W MOVING OPERATIONS ONLY
- 701321-08 - LANE CLOSURE, 2L, 2W, BRIDGE REPAIR WITH BARRIER
- 701326-02 - LANE CLOSURE, 2L, 2W, PAVEMENT WIDENING, FOR SPEEDS >= 45 MPH
- 702001-06 - TRAFFIC CONTROL DEVICES
- 704001-03 - TEMPORARY CONCRETE BARRIER
- 780001-01 - TYPICAL PAVEMENT MARKINGS
- 781001-02 - TYPICAL APPLICATIONS RAISED REFLECTIVE PAVEMENT MARKERS

STATE OF ILLINOIS  
DEPARTMENT OF TRANSPORTATION  
DISTRICT THREE

REVIEWED BY: Paul Powell  
DISTRICT STUDIES & PLANS ENGINEER

DATE: 8.27.07

EXAMINED BY: Herb Jones  
DISTRICT CONSTRUCTION ENGINEER

J. J. [Signature]  
DISTRICT MATERIALS ENGINEER

[Signature]  
DISTRICT OPERATIONS ENGINEER

REVISIONS	
NAME	DATE

ILLINOIS DEPARTMENT OF TRANSPORTATION  
**GENERAL NOTES, COMMITMENTS & HIGHWAY STANDARDS**  
FAP ROUTE 681  
SECTION 115 BR  
LIVINGSTON COUNTY

PLOT DATE = 08/29/2007  
 PLOT SCALE = 1/4" = 100'-0"  
 USER NAME = WJUSERS

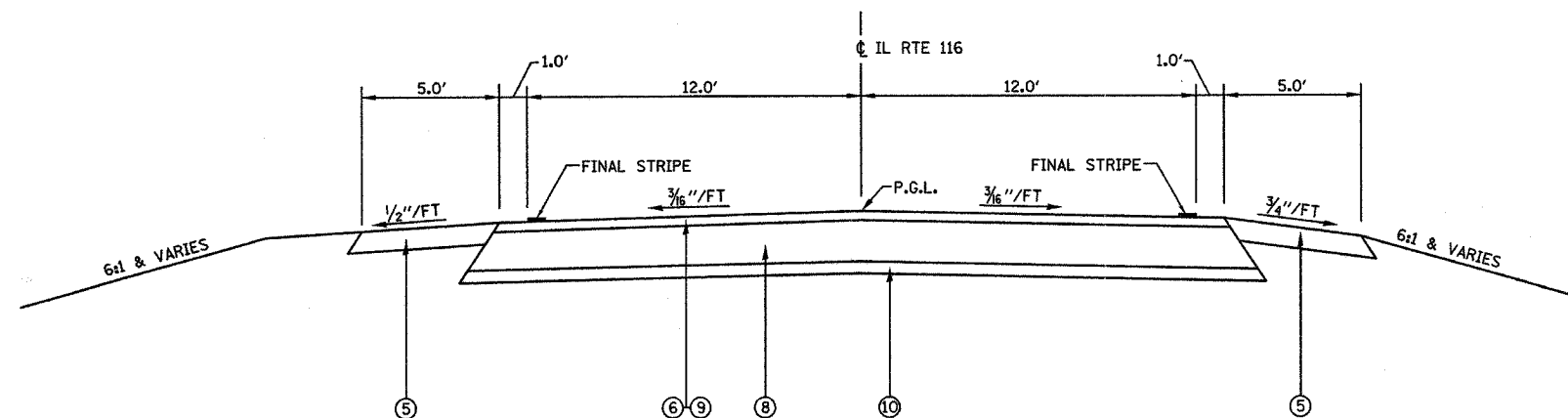
F.A.P. RTE.	SECTION	COUNTY	TOTAL SHEETS	SHEET NO.
681	115 BR	LIVINGSTON	32	3
STA.		TO STA.		
FED. ROAD DIST. NO.		ILLINOIS FED. AID PROJECT		

SUMMARY OF QUANTITIES			TOTAL QUANTITIES	CONSTRUCTION TYPE CODE	
CODE NO	ITEM	UNIT		I000	X028-2A
20200100	EARTH EXCAVATION	CU YD	513	513	
20300100	CHANNEL EXCAVATION	CU YD	112		112
20400800	FURNISHED EXCAVATION	CU YD	1207	1207	
20700220	POROUS GRANULAR EMBANKMENT	CU YD	201		201
20700400	POROUS GRANULAR EMBANKMENT, SPECIAL	CU YD	102		102
21300010	EXPLORATION TRENCH, SPECIAL	FOOT	100	100	
* 25000210	SEEDING, CLASS 2A	ACRE	1.2	1.2	
* 25000400	NITROGEN FERTILIZER NUTRIENT	POUND	112	112	
* 25000500	PHOSPHORUS FERTILIZER NUTRIENT	POUND	112	112	
* 25000600	POTASSIUM FERTILIZER NUTRIENT	POUND	112	112	
* 25100115	MULCH, METHOD 2	ACRE	1.2	1.2	
* 25100630	EROSION CONTROL BLANKET	SQ YD	42	42	
28000250	TEMPORARY EROSION CONTROL SEEDING	POUND	375	375	
28000300	TEMPORARY DITCH CHECKS	EACH	17	17	
28000400	PERIMETER EROSION BARRIER	FOOT	154	154	
28000500	INLET AND PIPE PROTECTION	EACH	2	2	
28100105	STONE RIPRAP, CLASS A3	SQ YD	74	74	
28200200	FILTER FABRIC	SQ YD	74	74	
31100300	SUB-BASE GRANULAR MATERIAL, TYPE A 4"	SQ YD	157	157	
35501325	HOT-MIX ASPHALT BASE COURSE, 10 1/4"	SQ YD	147	147	
35500708	HOT-MIX ASPHALT BASE COURSE WIDENING, 6"	SQ YD	1123	1123	
40200800	AGGREGATE SURFACE COURSE, TYPE B	TON	83	83	
40600100	BITUMINOUS MATERIALS (PRIME COAT)	GALLON	273	273	
40600300	AGGREGATE (PRIME COAT)	TON	7	7	
40600625	LEVELING BINDER (MACHINE METHOD), N50	TON	163	163	
40600982	HOT-MIX ASPHALT SURFACE REMOVAL - BUTT JOINT	SQ YD	348	348	
40600990	TEMPORARY RAMP	SQ YD	30	30	
40603000	HOT-MIX ASPHALT BINDER COURSE, 1/2-1.0, N50	TON	1690	1690	
40603310	HOT-MIX ASPHALT SURFACE COURSE, MIX "C", N50	TON	283	283	
44000100	PAVEMENT REMOVAL	SQ YD	80	80	
44000151	HOT-MIX ASPHALT SURFACE REMOVAL 1/2"	SQ YD	3222	3222	
48101600	AGGREGATE SHOULDERS, TYPE B 6"	SQ YD	1286	1286	
50100200	REMOVAL OF EXISTING STRUCTURES	L SUM	1		1
50102510	CONCRETE REMOVAL (SPECIAL)	EACH	2		2
50104000	BRIDGE RAIL REMOVAL	FOOT	76		76
50105220	PIPE CULVERT REMOVAL	FOOT	30	30	
50200100	STRUCTURE EXCAVATION	CU YD	252		252
50300225	CONCRETE STRUCTURES	CU YD	17.5		17.5

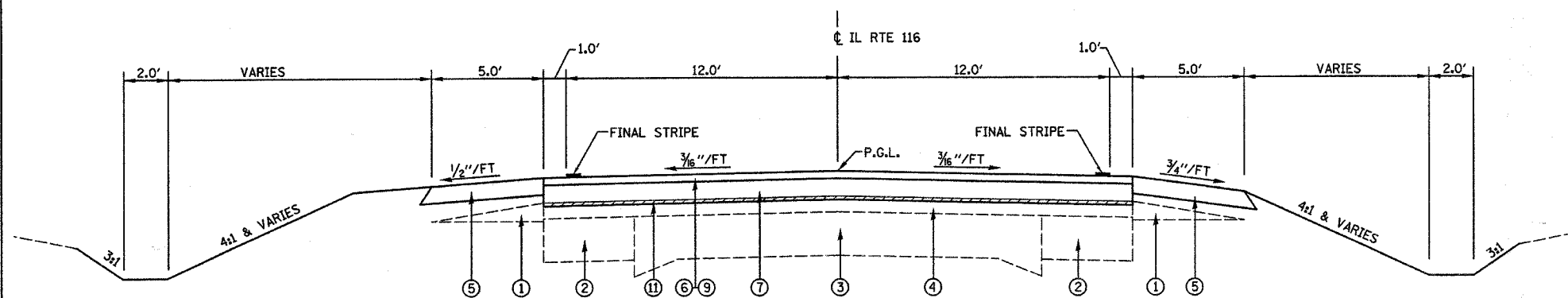
SUMMARY OF QUANTITIES			TOTAL QUANTITIES	CONSTRUCTION TYPE CODE	
CODE NO	ITEM	UNIT		I000	X028-2A
50800105	REINFORCEMENT BARS	POUND	950		950
51205200	TEMPORARY SHEET PILING	SQ FT	172		172
51500100	NAME PLATES	EACH	1		1
54020904	PRECAST CONCRETE BOX CULVERT 6' X 4' (M273)	FOOT	124		124
54200220	PIPE CULVERTS, CLASS D, TYPE 1 15"	FOOT	47	47	
54200223	PIPE CULVERTS, CLASS D, TYPE 1 16"	FOOT	43	43	
54215550	METAL END SECTIONS 15"	EACH	2	2	
54215553	METAL END SECTIONS 16"	EACH	2	2	
550A0340	STORM SEWERS, CLASS A, TYPE 2 12"	FOOT	150	150	
55100500	STORM SEWER REMOVAL 12"	FOOT	214	214	
61100605	MISCELLANEOUS CONCRETE	CU YD	5	5	
61133200	FIELD TILE JUNCTION VAULTS, 3' DIA.	EACH	4	4	
63200310	GUARDRAIL REMOVAL	FOOT	412	412	
66000105	FURNISHING AND ERECTING RIGHT-OF-WAY MARKERS	EACH	8	8	
67000400	ENGINEER'S FIELD OFFICE, TYPE A	CAL MO	5	5	
67100100	MOBILIZATION	L SUM	1	1	
70100405	TRAFFIC CONTROL AND PROTECTION, STANDARD 701321	EACH	2	2	
70100500	TRAFFIC CONTROL AND PROTECTION, STANDARD 701326	L SUM	1	1	
70100600	TEMPORARY BRIDGE TRAFFIC SIGNALS	EACH	1	1	
70300100	SHORT-TERM PAVEMENT MARKING	FOOT	117	117	
70300220	TEMPORARY PAVEMENT MARKING - LINE 4"	FOOT	3951	3951	
70300280	TEMPORARY PAVEMENT MARKING - LINE 24"	FOOT	24	24	
70301000	WORK ZONE PAVEMENT MARKING REMOVAL	SQ FT	1209	1209	
70400100	TEMPORARY CONCRETE BARRIER	FOOT	400	400	
70400200	RELOCATE TEMPORARY CONCRETE BARRIER	FOOT	175	175	
* 78000200	THERMOPLASTIC PAVEMENT MARKING - LINE 4"	FOOT	2330	2330	
* 78000400	THERMOPLASTIC PAVEMENT MARKING - LINE 6"	FOOT	290	290	
* 78100100	RAISED REFLECTIVE PAVEMENT MARKER	EACH	15	15	
78300100	PAVEMENT MARKING REMOVAL	SQ FT	82	82	
78300200	RAISED REFLECTIVE PAVEMENT MARKER REMOVAL	EACH	15	15	
X0819000	TEMPORARY PAVEMENT REMOVAL	SQ YD	1123	1123	
Z0030250	IMPACT ATTENUATORS, TEMPORARY (NON-REDIRECTIVE), TEST LEVEL 3	EACH	2	2	
Z0030350	IMPACT ATTENUATORS, RELOCATE (NON-REDIRECTIVE), TEST LEVEL 3	EACH	2	2	

\* SPECIALTY ITEM

F.A.P. RTE.	SECTION	COUNTY	TOTAL SHEETS	SHEET NO.
681	115 BR	LIVINGSTON	32	4
STA.		TO STA.		
FED. ROAD DIST. NO.	ILLINOIS	FED. AID PROJECT		



**PROPOSED TYPICAL SECTION**  
STA. 125+75.00 TO STA. 126+25.00



**PROPOSED TYPICAL SECTION**  
STA. 121+50.00 TO STA. 125+75.00  
STA. 126+25.00 TO STA. 133+15.00

NOTE: ESTIMATED VARIABLE DEPTH HMA BINDER THICKNESS  
 STA. 121+50 TO STA. 122+50 - NONE ANTICIPATED  
 STA. 122+50 TO STA. 125+75 - VARIES 0 TO 1'-2"  
 STA. 126+25 TO STA. 128+00 - VARIES 1'-3/2" TO 1'-9/4"  
 STA. 128+00 TO STA. 132+25 - VARIES 1'-9/4" TO 0  
 STA. 132+25 TO STA. 133+15 - NONE ANTICIPATED

**LEGEND**

- ① EXISTING AGGREGATE SHOULDER
- ② EXISTING BITUMINOUS CONCRETE BASE COURSE WIDENING, 7"
- ③ EXISTING PAVEMENT
- ④ EXISTING EXISTING BITUMINOUS CONCRETE OVERLAY
- ⑤ PROPOSED AGGREGATE SHOULDERS, TYPE B, 8"
- ⑥ PROPOSED 1/2" HOT-MIX ASPHALT SURFACE COURSE, MIX "C", N50
- ⑦ PROPOSED VARIABLE DEPTH HOT-MIX ASPHALT BINDER COURSE, IL-19.0, N50
- ⑧ PROPOSED HOT-MIX ASPHALT BASE COURSE, 10 1/4"
- ⑨ PROPOSED 1" LEVELING BINDER (MACHINE METHOD), N50
- ⑩ PROPOSED SUB-BASE GRANULAR MATERIAL, TYPE A, 4"
- ⑪ PROPOSED HOT-MIX ASPHALT SURFACE REMOVAL, 1/2"

**MIXTURE REQUIREMENTS**

	HMA BINDER	HMA LEVEL BINDER	HMA SURFACE COURSE	HMA BASE COURSE & BASE COURSE WIDENING
PG GRADE	PG58-22	PG64-22	PG64-22	PG58-22
MAX % RAP ALLOWABLE**	25%	15%	15%	25%
DESIGN AIR VOIDS	4.0% @ N50	4.0% @ N50	4.0% @ N50	4.0% @ N50
MIXTURE COMPOSITION	IL 19.0	IL 9.5	IL 12.5 or IL 9.5	IL 19.0
FRICTION AGGREGATE			MIXTURE C	
DENSITY TEST METHOD	CORES/NUCLEAR	SATISFACTION OF ENGINEER	CORES/NUCLEAR	CORES/NUCLEAR

• MATERIAL SHALL BE COMPACTED TO 93.0-97.4 PERCENT OF THE MAXIMUM THEORETICAL DENSITY, EXCEPT THAT WHEN PLACED AS FIRST LIFT ON AN UNIMPROVED SUBGRADE THE MINIMUM PERCENT COMPACTION SHALL BE 92.0 PERCENT. THE MAXIMUM THEORETICAL DENSITY SHALL BE DETERMINED FROM THE MOVING AVERAGE AS SPECIFIED IN THE QC/OA SPECIFICATION.

\*\* IF RAP OPTION IS SELECTED, THE ASPHALT CEMENT GRADE MAY NEED TO BE ADJUSTED. THIS WILL BE DETERMINED BY THE ENGINEER.

REVISIONS	
NAME	DATE

ILLINOIS DEPARTMENT OF TRANSPORTATION

**TYPICAL SECTIONS**

FAP ROUTE 681  
SECTION 115 BR  
LIVINGSTON COUNTY



F.A.P. RTE.	SECTION	COUNTY	TOTAL SHEETS	SHEET NO.
681	115 BR	LIVINGSTON	32	5
STA.		TO STA.		
FED. ROAD DIST. NO.		ILLINOIS	FED. AID PROJECT	

**GUARDRAIL REMOVAL**

STATION	STATION	GUARDRAIL REMOV 63200310 (FOOT)	BRIDGE RAIL REMOVAL 50104000 (FOOT)
LT 124+78.8	LT 125+81.1	103	
RT 124+78.7	RT 125+81.1	103	
LT 125+81.1	LT 126+18.9		38
RT 125+81.1	RT 126+18.9		38
LT 126+18.9	LT 127+21.4	103	
RT 126+18.9	RT 127+21.1	103	
TOTAL		412	76

**EARTHWORK SCHEDULE**

STATION	STATION	EARTH EXCAVATION (CU YD)	EARTH EXCAVATION ADJUSTED FOR SHRINKAGE (NOTE 1) (CU YD)	EMBANKMENT (CU YD)	EARTHWORK BALANCE WASTE (+) OR SHORTAGE (-) (CU YD)
		20200100			
121+50	133+96	513	385	1592	-1207
TOTAL		513	385	1592	-1207

**EARTHWORK NOTES:**

- ESTIMATED SHRINKAGE FACTOR = 25%.
- FURNISHED EXCAVATION = 1207 CU YD

**PAVEMENT MARKING SCHEDULE**

STATION	STATION	THPL PVT MK LINE 4 (NOTE 1) 78000200 (FOOT)	THPL PVT MK LINE 6 (NOTE 2) 78000400 (FOOT)	RAISED REFL PAVT MKR (NOTE 3) 78100100 (EACH)	PAVT MARKING REMOVAL (SQ FT)	RAISED REF PVT MK REM (EACH)
LT 121+50	LT 133+15	1165				
RT 121+50	RT 133+15	1165				
CL 121+50	CL 133+15		290	15		15
CL 121+50	CL 125+00				30	
CL 127+00	CL 133+15				52	
TOTAL		2330	290	15	82	15

**PAVEMENT MARKING NOTES:**

- SEE HIGHWAY STANDARD 780001 FOR PAVEMENT MARKING DETAILS.
- CENTERLINE SKIP DASH SHALL CONSIST OF 6 INCH WIDE LINES.
- SEE HIGHWAY STANDARD 781001 FOR RAISED REFLECTIVE PAVEMENT MARKER DETAILS.  
RAISED REFLECTIVE PAVEMENT MARKER QUANTITY INCLUDES THE FOLLOWING TYPES:  
15 EACH TWO-WAY AMBER MARKERS

**EROSION CONTROL SCHEDULE**

STATION	STATION	EROSION CONTROL BLANKET 25100630 (SQ YD)	PERIMETER EROS BAR 28000400 (FOOT)	INLET & PIPE PROTECTION 28000500 (EACH)	TEMPORARY DITCH CHECKS 28000300 (EACH)
LT 122+50					1
RT 122+80					1
LT 124+00					1
RT 124+10					1
RT 124+24	RT 124+76		92		
RT 124+30				1	
LT 125+50					1
RT 125+50					1
LT 125+77	LT 126+23	21			
RT 125+77	RT 126+23	21			
LT 126+50					1
RT 126+50					1
RT 128+40					1
LT 129+00					1
LT 130+00					1
RT 130+30					1
LT 131+00					1
RT 131+30					1
LT 132+00					1
RT 132+10					1
RT 133+00					1
RT 133+49	RT 134+07		62		
RT 134+00				1	
TOTAL		42	154	2	17

**EROSION CONTROL NOTES:**

- TEMPORARY DITCH CHECKS EVERY 1.5' RISE/FALL

**PAVEMENT SCHEDULE**

STATION	STATION	SUB GRAN MAT A 4 (SQ YD)	HMA BASE CSE 10 1/4 (SQ YD)	HMA BC WID 8 (SQ YD)	BIT MATLS PR CT (GAL)	AGG PR CT (TON)	LEV BIND MM N50 (TON)	HMA BC IL-19.0 N50 (TON)	HMA SC "C" N50 (TON)	PAVEMENT REM (SQ YD)	HMA SURF REM 1/2 (SQ YD)	AGGREGATE SHLDS B 8 (SQ YD)	TEMP PAVT REMOVAL (SQ YD)
121+50	125+75			352	99	2.5	56	382	103		1228	473	352
125+75	126+25	157	147	60	12	0.3	8			80		56	60
126+25	133+15			711	162	4.0	99	1308	168		1994	767	711
TOTAL		157	147	1123	273	7	163	1690	283	80	3222	1296	1123

**SEEDING SCHEDULE**

STATION	STATION	SEEDING CL 2A 25000210 (ACRE)	NITROGEN FERT NUTR 25000400 (POUND)	PHOSPHORUS FERT NUTR 25000500 (POUND)	POTASSIUM FERT NUTR 25000600 (POUND)	MULCH METHOD 2 25100115 (ACRE)	TEMP EROS CONTR SEED 28000250 (POUND)
LT 121+50	LT 126+00	0.24	22	22	22	0.24	72
RT 121+50	RT 126+00	0.26	23	23	23	0.26	79
LT 126+00	LT 133+15	0.35	32	32	32	0.35	106
RT 126+00	RT 133+15	0.39	35	35	35	0.39	118
TOTAL		1.2	112	112	112	1.2	375

**ROW MARKER SCHEDULE**

STATION	OFFSET	FUR ERECT ROW MARKERS (EACH)
LT 121+00	40.10'	1
RT 121+00	39.90'	1
LT 121+50	50'	1
RT 121+50	50'	1
LT 131+00	50'	1
RT 131+00	50'	1
LT 131+50	40.39'	1
RT 131+50	39.61'	1
TOTAL		8

**TRAFFIC CONTROL ITEMS**

STATION	STATION	SHORT-TERM PAVT MKING 70300100 (FOOT)	TEMP PVT MK LINE 4 70300220 (FOOT)	TEMP PVT MK LINE 24 70300280 (FOOT)	WORK ZONE PAVT MK REM 70301000 (SQ FT)	TEMP CONC BARRIER 70400100 (FOOT)	REL TEMP CONC BARRIER 70400200 (FOOT)	IMP ATTN TEMP FRN TL3 Z0030260 (EACH)	IMP ATTN REL FRD TL3 Z0030330 (EACH)
STAGE 1									
RT 121+90				12					
RT 122+50	RT 132+50		1000		330				
LT 122+13	LT 125+62		349		115				
LT 124+82	LT 125+12						1		
LT 125+12	LT 126+87					175			
LT 126+87	LT 127+17						1		
LT 126+38	LT 133+10		672		222				
LT 133+10				12					
STAGE 2									
RT 121+90					24				
LT 121+85	LT 133+15		1130		373				
RT 122+00	RT 124+50		250		83				
LT 123+70	LT 124+00							1	
LT 124+00	LT 128+00					225	175		
LT 128+00	LT 128+30							1	
LT 133+10					24				
RT 127+50	RT 133+00		550						
CL 121+50	CL 133+15	117			39				
TOTAL		117	3951	24	1209	400	175	2	2

**CHANNEL EXCAVATION SCHEDULE**

LOCATION	CHANNEL EXCAVATION (CU YD)
UPSTREAM OF CULVERT	26
DOWNSTREAM OF CULVERT	86
TOTAL	112

**CHANNEL EXCAVATION NOTES:**

- QUANTITY CALCULATED ASSUMING A 21' FLAT BOTTOM DITCH WITH 1:3 SIDE SLOPES. ACTUAL DITCH SECTION TO BE DETERMINED BY ENGINEER IN THE FIELD.

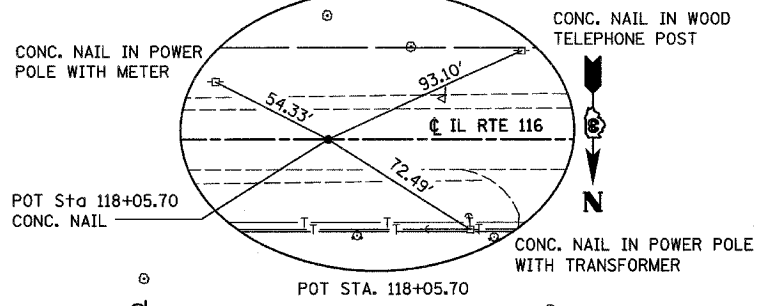
REVISIONS	
NAME	DATE

ILLINOIS DEPARTMENT OF TRANSPORTATION

**SCHEDULE OF QUANTITIES**

FAP ROUTE 681  
SECTION 115 BR  
LIVINGSTON COUNTY

F.A.P. RTE.	SECTION	COUNTY	TOTAL SHEETS	SHEET NO.
681	115 BR	LIVINGSTON	32	6
STA. 118+00		TO STA. 124+00		
FED. ROAD DIST. NO.		ILLINOIS FED. AID PROJECT		



POT Sta 118+05.70  
CONC. NAIL

POT STA. 118+05.70

CONC. NAIL IN POWER POLE WITH TRANSFORMER

NANCY J. KOEHLER, TRUSTEES

STA. 121+00  
40.10' LT.

STA. 121+50  
50' LT.

BEGIN CONSTRUCTION  
STA. 121+50

PROPOSED ROW

174 SQ YD - HMA SURF  
REM - BUTT JOINT  
(SEE BUTT JOINT DETAIL)

CONST LIMITS

AGGREGATE SHLDS

MATCH LINE STA. 124+00

AGGREGATE SHLDS

CONST LIMITS

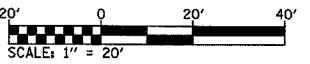
15 SQ YD - TEMPORARY RAMP

PROPOSED ROW

DARLENE V. BILLERBECK

STA. 121+00  
39.90' RT.

STA. 121+50  
50' RT.

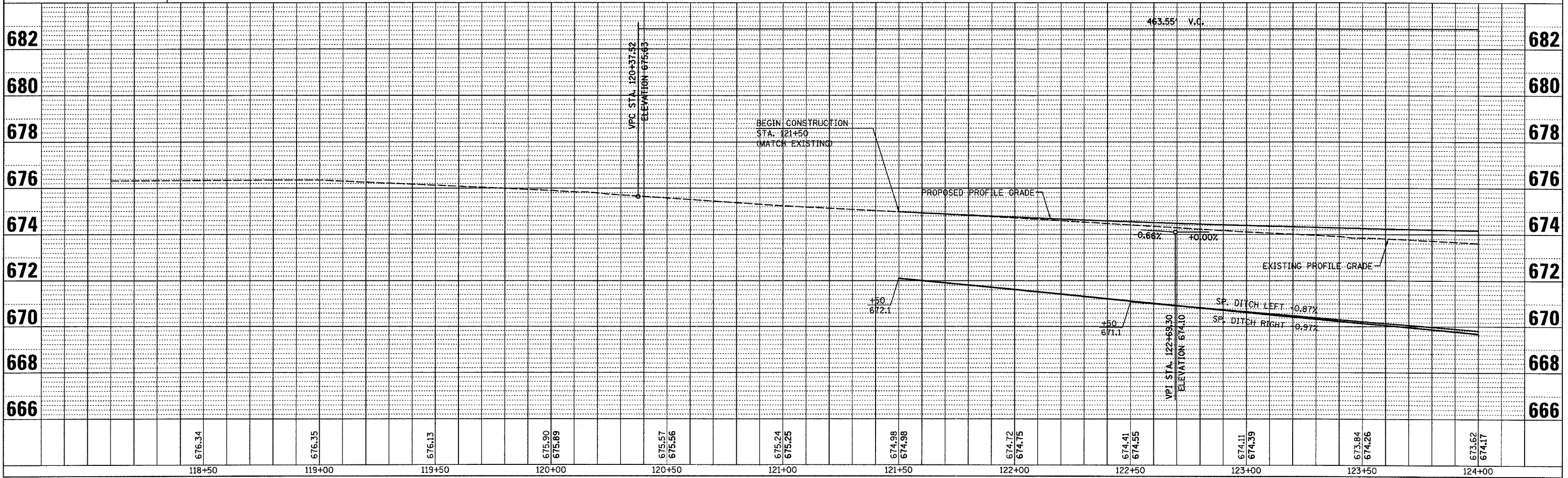


POT STA. 118+05.70  
POINT 200 FROM FIELD BOOK  
NORTHING = 1,533,861.1710  
EASTING = 1,007,763.7770

PLAN	DATE
DATE	
BY	
SURVEYED	
PLOTTED	
CHECKED	
DATE	
BY	
NOTE BOOK	
NO.	
FILE NAME	

PROFILE	DATE
DATE	
BY	
SURVEYED	
PLOTTED	
CHECKED	
DATE	
BY	
NOTE BOOK	
NO.	
FILE NAME	

PLOT DATE = 08/28/2007  
FILE NAME = H:\P\66654\Files Copied from M Drive\Microstation\Microsta\66654\66654.dwg  
PLOT SCALE = 28.0000 / IN.  
USER NAME = JUSERS



STA. 118+00 TO STA. 124+00

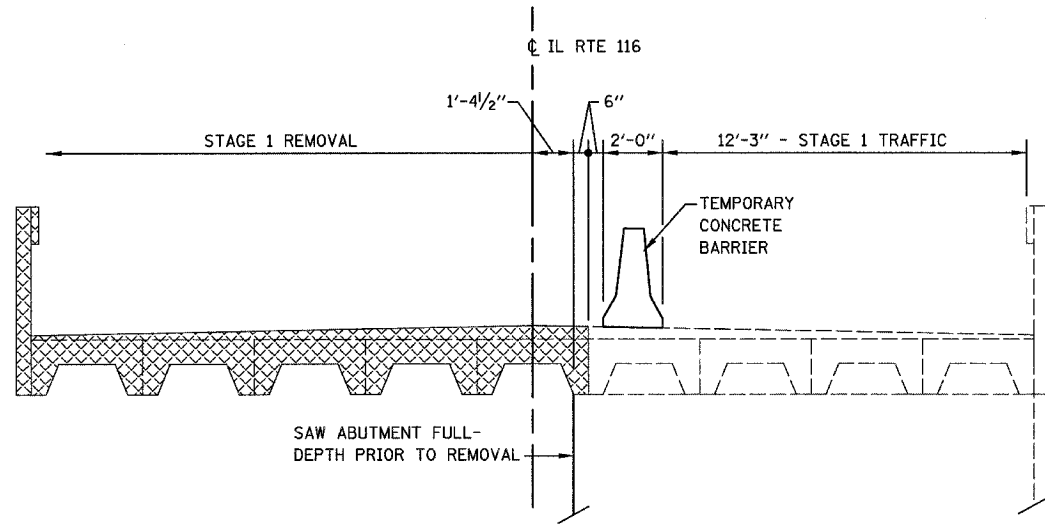




F.A.P. RTE.	SECTION	COUNTY	TOTAL SHEETS	SHEET NO.
681	115 BR	LIVINGSTON	32	9
STA.		TO STA.		
FED. ROAD DIST. NO.		ILLINOIS	FED. AID PROJECT	

**STAGE CONSTRUCTION GENERAL NOTES**

1. ALL TRAFFIC CONTROL DEVICES SHALL BE FURNISHED, ERECTED AND MAINTAINED BY THE CONTRACTOR.
2. ALL SIGNS NOT ATTACHED TO BARRICADES SHALL BE POST MOUNTED.
3. ONE LANE OF TRAFFIC ON ILLINOIS ROUTE 116 SHALL BE MAINTAINED AT ALL TIMES.
4. THE FURNISHING, PLACEMENT AND REMOVAL OF THE TYPE C BI-DIRECTIONAL REFLECTORS SHALL BE INCLUDED IN THE COST OF "TRAFFIC CONTROL AND PROTECTION, STANDARD 701321."
5. EMERGENCY ACCESS SHALL BE PROVIDED AT ALL TIMES.
6. EXISTING CENTERLINE AND EDGE LINE MARKINGS WHICH CONFLICT WITH THE PROPOSED TRAFFIC PATTERN SHALL BE REMOVED. THE COST OF WHICH WILL BE PAID FOR AS "PAVEMENT MARKING REMOVAL."
7. THE BOTTOM 6" OF THE TRAFFIC FACE OF THE TEMPORARY CONCRETE BARRIER SHALL BE PAINTED WITH WHITE TEMPORARY PAVEMENT MARKING PAINT. THE WORK SHALL NOT BE PAID FOR SEPARATELY, BUT INCLUDED IN THE COST OF "TEMPORARY CONCRETE BARRIER."



**STAGE 1 CONSTRUCTION TYPICAL SECTION**  
(LOOKING WEST @ STRUCTURE)

**SUGGESTED STAGE CONSTRUCTION**

SUGGESTED STAGE 1

PHASE 1

1. UTILIZING TRAFFIC CONTROL AND PROTECTION, STANDARD 701301, CONSTRUCT THE PROPOSED FIELD ENTRANCE ON THE NORTH SIDE OF FAP ROUTE 681 AT STA. 133+78.
2. ERECT TYPE 3 BARRICADES ACROSS THE ENTRANCE ON THE NORTH SIDE OF FAP ROUTE 681 AT STA. 129+04.

PHASE 2

1. UTILIZING TRAFFIC CONTROL AND PROTECTION, STANDARD 701326, CONSTRUCT THE HMA BASE COURSE WIDENING, 8" ON THE NORTH SIDE OF THE ROADWAY.

PHASE 3

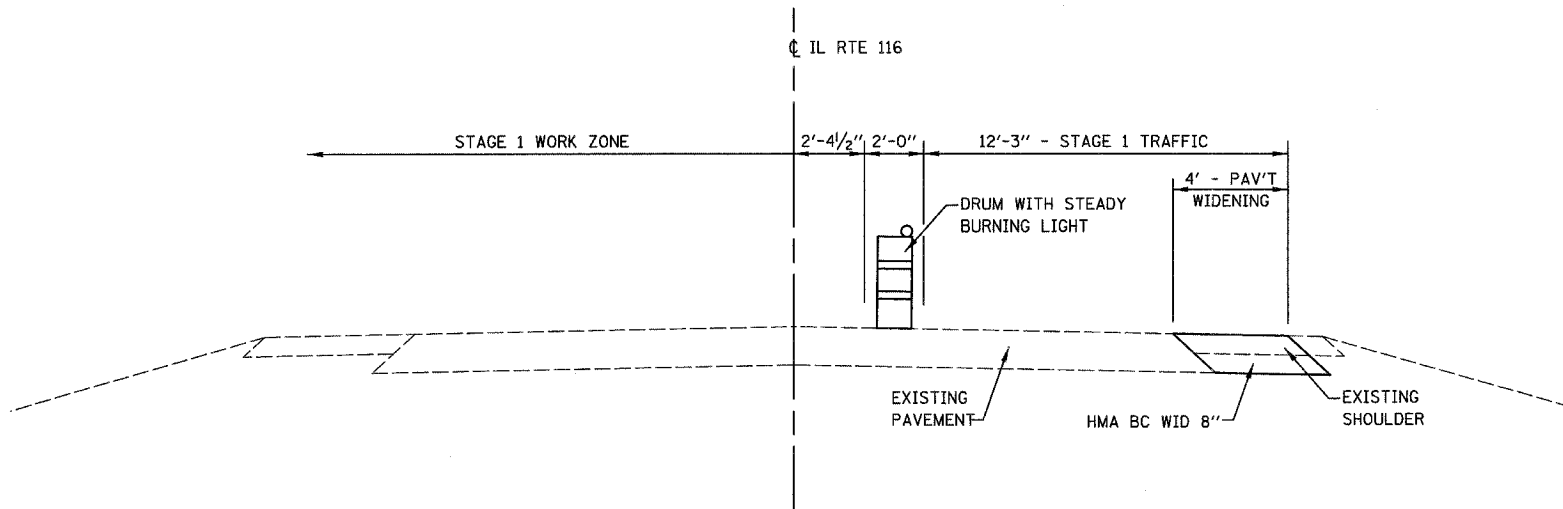
1. UTILIZING TRAFFIC CONTROL AND PROTECTION, STANDARD 701321, DIRECT TRAFFIC ON THE WESTBOUND LANES OF FAP ROUTE 681. REMOVE THE SOUTHERN PORTION OF THE EXISTING STRUCTURE.
2. CONSTRUCT THE SOUTHERN PORTION OF THE BOX CULVERT AND THE RELOCATED FIELD TILE.
3. CONSTRUCT THE PROPOSED BASE COURSE FOR THE EASTBOUND LANE OF FAP ROUTE 681 FROM STA. 125+75 TO STA. 126+25.
4. COMPLETE HMA SURFACE REMOVAL, 1/2" FOR THE EASTBOUND LANE OF FAP ROUTE 681 FROM STA. 121+50 TO STA. 125+75 AND FROM STA. 126+25 TO STA. 133+15.
5. CONSTRUCT THE PROPOSED BINDER COURSE FOR THE EASTBOUND LANE OF FAP ROUTE 681 FROM STA. 121+50 TO STA. 125+75 AND FROM STA. 126+25 TO STA. 133+15.
6. CONSTRUCT THE HMA BASE COURSE WIDENING, 8" ON THE SOUTH SIDE OF FAP ROUTE 681 FROM STA. 121+85 TO STA. 133+15.
7. TEMPORARY PAVEMENT MARKING.

SUGGESTED STAGE 2

1. UTILIZING TRAFFIC CONTROL AND PROTECTION, STANDARD 701321, DIRECT TRAFFIC ON THE EASTBOUND LANES OF FAP ROUTE 681.
2. REMOVE THE NORTHERN PORTION OF THE EXISTING STRUCTURE.
3. CONSTRUCT THE NORTHERN PORTION OF THE BOX CULVERT AND THE RELOCATED FIELD TILE.
4. REMOVE THE WIDENING AS REQUIRED ON THE NORTH SIDE OF THE FAP ROUTE 681 AND THE BARRICADES ACROSS THE ENTRANCE AT STA. 129+04.
5. CONSTRUCT THE PROPOSED BASE COURSE FOR THE WESTBOUND LANE OF FAP ROUTE 681 FROM STA. 125+75 TO STA. 126+25.
6. COMPLETE HMA SURFACE REMOVAL, 1/2" FOR THE WESTBOUND LANE OF FAP ROUTE 681 FROM STA. 121+50 TO STA. 125+75 AND FROM STA. 126+25 TO STA. 133+15.
7. CONSTRUCT THE PROPOSED BINDER COURSE FOR THE WESTBOUND LANE OF FAP ROUTE 681 FROM STA. 121+50 TO STA. 125+75 AND FROM STA. 126+25 TO STA. 133+15.
8. OPEN BOTH LANES OF FAP 681 TO TRAFFIC.

SUGGESTED STAGE 3

1. UTILIZING TRAFFIC CONTROL AND PROTECTION, STANDARD 701306, CONSTRUCT THE PROPOSED SURFACE COURSE FOR BOTH LANES OF FAP ROUTE 681 FROM STA. 121+50 TO STA. 133+15.
2. UTILIZING TRAFFIC CONTROL AND PROTECTION, STANDARD 701326, REMOVE THE WIDENING ON THE SOUTH SIDE OF FAP ROUTE 681 FROM STA. 121+85 TO STA. 133+15 AND CONSTRUCT THE PROPOSED AGGREGATE SHOULDER ON THE SOUTH SIDE OF FAP ROUTE 681 FROM STA. 121+50 TO STA. 133+15.
3. UTILIZING TRAFFIC CONTROL AND PROTECTION, STANDARD 701326, CONSTRUCT THE PROPOSED AGGREGATE SHOULDER ON THE NORTHSIDE OF FAP ROUTE 681 FROM STA. 121+50 TO STA. 133+15.
4. UTILIZING TRAFFIC CONTROL AND PROTECTION, STANDARD 701311, CONSTRUCT THE FINAL PAVEMENT MARKING.



**STAGE 1 CONSTRUCTION TYPICAL SECTION**  
(LOOKING WEST @ APPROACH)

REVISIONS	
NAME	DATE

ILLINOIS DEPARTMENT OF TRANSPORTATION

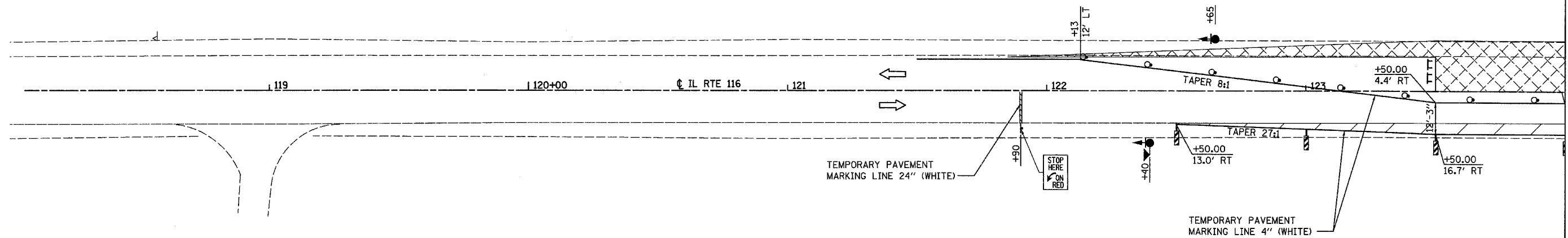
**STAGE CONSTRUCTION & TRAFFIC CONTROL**

FAP ROUTE 681  
SECTION 115 BR  
LIVINGSTON COUNTY

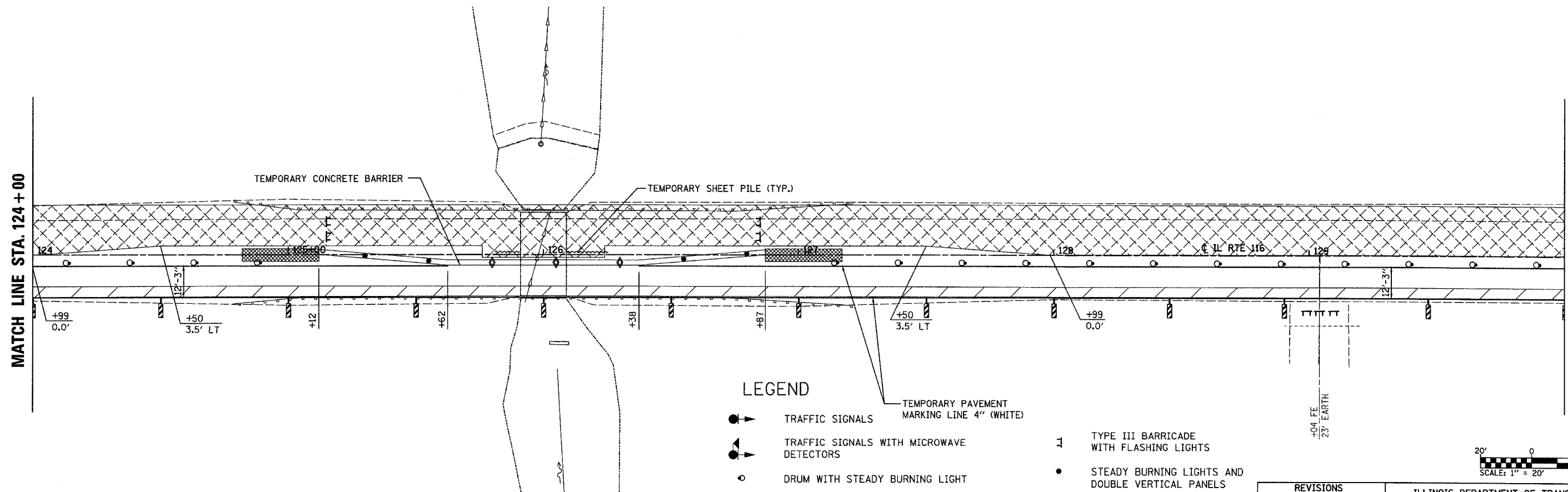
PLOT DATE = 8/20/2007  
 FILE NAME = H:\V\250561\F1.dwg  
 PLOT SCALE = 28.0000 / IN.  
 USER NAME = MUSER



F.A.P. RTE.	SECTION	COUNTY	TOTAL SHEETS	SHEET NO.
681	115 BR	LIVINGSTON	32	10
STA.		TO STA.		
FED. ROAD DIST. NO.		ILLINOIS FED. AID PROJECT		



MATCH LINE STA. 124+00

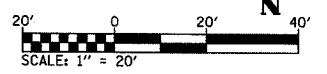


MATCH LINE STA. 124+00

MATCH LINE STA. 130+00

**LEGEND**

- TRAFFIC SIGNALS
- TRAFFIC SIGNALS WITH MICROWAVE DETECTORS
- DRUM WITH STEADY BURNING LIGHT
- STOP LINE 24"
- IMPACT ATTENUATORS, TEMPORARY (FULLY-REDIRECTIVE, NARROW) TEST LEVEL 3
- DOUBLE VERTICAL PANEL
- TYPE C BI-DIRECTIONAL REFLECTOR
- TYPE III BARRICADE WITH FLASHING LIGHTS
- STEADY BURNING LIGHTS AND DOUBLE VERTICAL PANELS
- WORK AREA
- SIGN
- TEMPORARY HMA BASE COURSE WIDENING, 8"
- DIRECTION OF TRAFFIC



REVISIONS	
NAME	DATE

ILLINOIS DEPARTMENT OF TRANSPORTATION

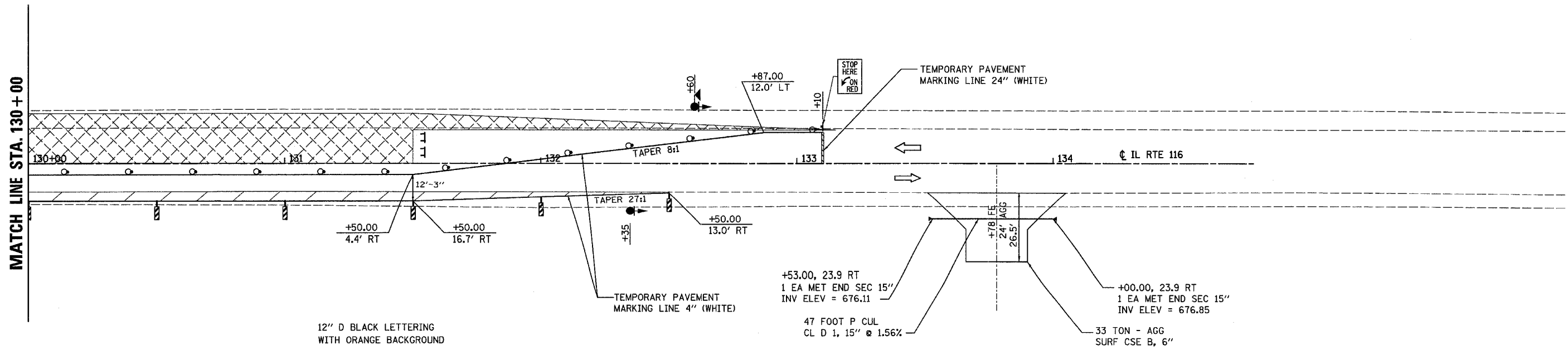
**STAGE 1 CONSTRUCTION & TRAFFIC CONTROL**

FAP ROUTE 681  
SECTION 115 BR  
LIVINGSTON COUNTY

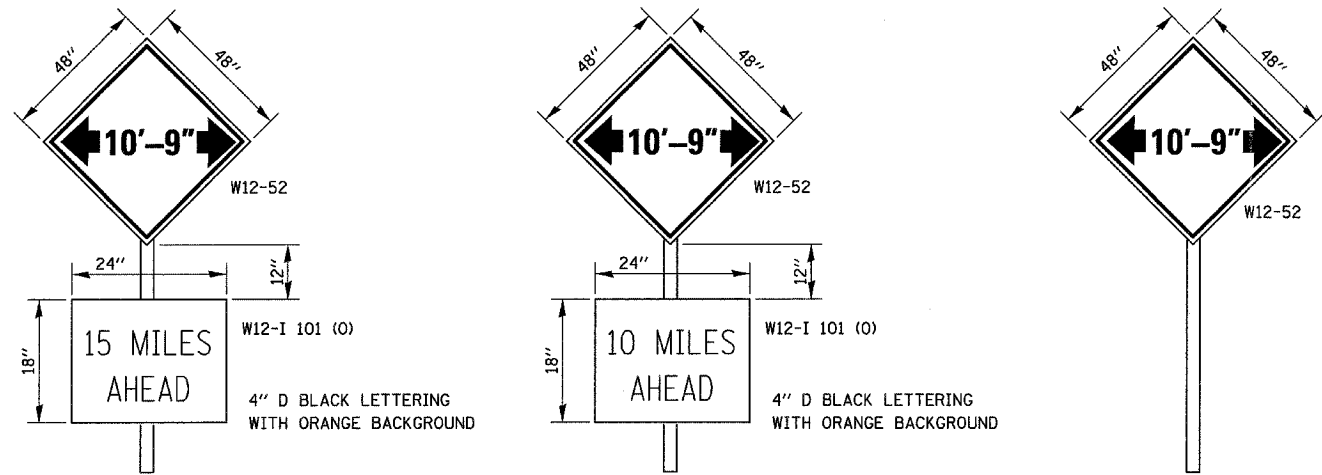
PLOT DATE = 08/20/2007  
FILE NAME = H:\V\25654\Files Copied from M Drive\Microstation\Microstation (Working Project File)\shasas02.dgn  
PLOT SCALE = 20.0000 / IN.  
USER NAME = MUSER0

**TRAFFIC CONTROL PLAN - STAGE 1**

F.A.P. RTE.	SECTION	COUNTY	TOTAL SHEETS	SHEET NO.
681	115 BR	LIVINGSTON	32	11
STA.		TO STA.		
FED. ROAD DIST. NO.		ILLINOIS FED. AID PROJECT		



NOTES:  
1. SIGNING AND BARRICADES OUTSIDE OF THE LIMITS OF THE STOP BARS SHALL BE IN ACCORDANCE WITH STANDARD 701321



AT JUNCTION OF I-57 AND IL 116                      AT JUNCTION OF IL 47 AND IL 116

A W12-52 SIGN, WITH A W12-I101 SIGN, SHALL BE ERECTED AT THE JUNCTION OF IL 47 AND IL 116 AND AT THE JUNCTION OF I-57 AND IL 116. THE ACTUAL LOCATION OF THE SIGNS TO BE DETERMINED BY THE ENGINEER. AN ADDITIONAL W12-52 SIGN SHALL BE ERECTED 1000 FEET IN EACH DIRECTION FROM THE BRIDGE PRIOR TO STAGE 1 CONSTRUCTION. THESE SIGNS SHALL BE MAINTAINED BY THE CONTRACTOR DURING STAGE 1 CONSTRUCTION AND SHALL BE REMOVED WHEN TRAFFIC IS OPEN FOR STAGE 2.

THE ENGINEER WILL NOTIFY DISTRICT 3 BUREAU OF OPERATIONS 14 CALENDAR DAYS PRIOR TO INSTALLING ANY TRAFFIC CONTROL DEVICES THAT WILL RESTRICT THE PAVEMENT WIDTH.

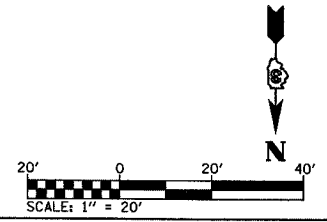
THE CONTRACTOR SHALL BE RESPONSIBLE FOR COORDINATING WITH THE ENGINEER TO MEET THIS REQUIREMENT.

COST OF SUPPLYING, INSTALLING, MAINTAINING AND REMOVING WIDTH RESTRICTION SIGNS SHALL BE INCLUDED IN THE COST OF THE TRAFFIC CONTROL AND PROTECTION PAY ITEMS.

**WIDTH RESTRICTION SIGNING DETAILS**

**LEGEND**

- TRAFFIC SIGNALS
- TRAFFIC SIGNALS WITH MICROWAVE DETECTORS
- DRUM WITH STEADY BURNING LIGHT
- STOP LINE 24"
- IMPACT ATTENUATORS, TEMPORARY (FULLY-REDIRECTIVE, NARROW) TEST LEVEL 3
- DOUBLE VERTICAL PANEL
- TYPE C BI-DIRECTIONAL REFLECTOR
- TYPE III BARRICADE WITH FLASHING LIGHTS
- STEADY BURNING LIGHTS AND DOUBLE VERTICAL PANELS
- WORK AREA
- SIGN
- TEMPORARY HMA BASE COURSE WIDENING, 8"
- DIRECTION OF TRAFFIC



REVISIONS	
NAME	DATE

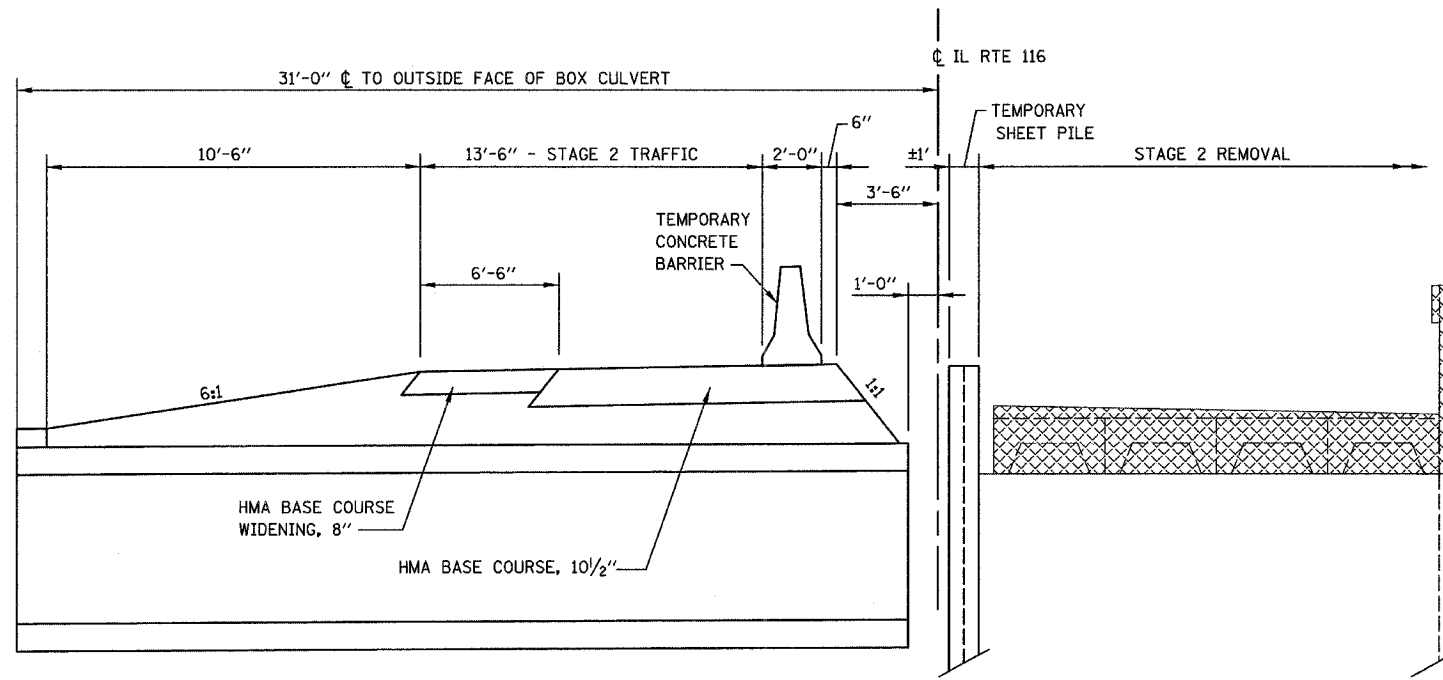
ILLINOIS DEPARTMENT OF TRANSPORTATION

**STAGE 1 CONSTRUCTION & TRAFFIC CONTROL**

FAP ROUTE 681  
SECTION 115 BR  
LIVINGSTON COUNTY

PLOT DATE = 08/20/2007  
 FILE NAME = H:\P\66690\F111.dwg  
 PLOT SCALE = 20.0000 / IN.  
 USER NAME = JUSSEN

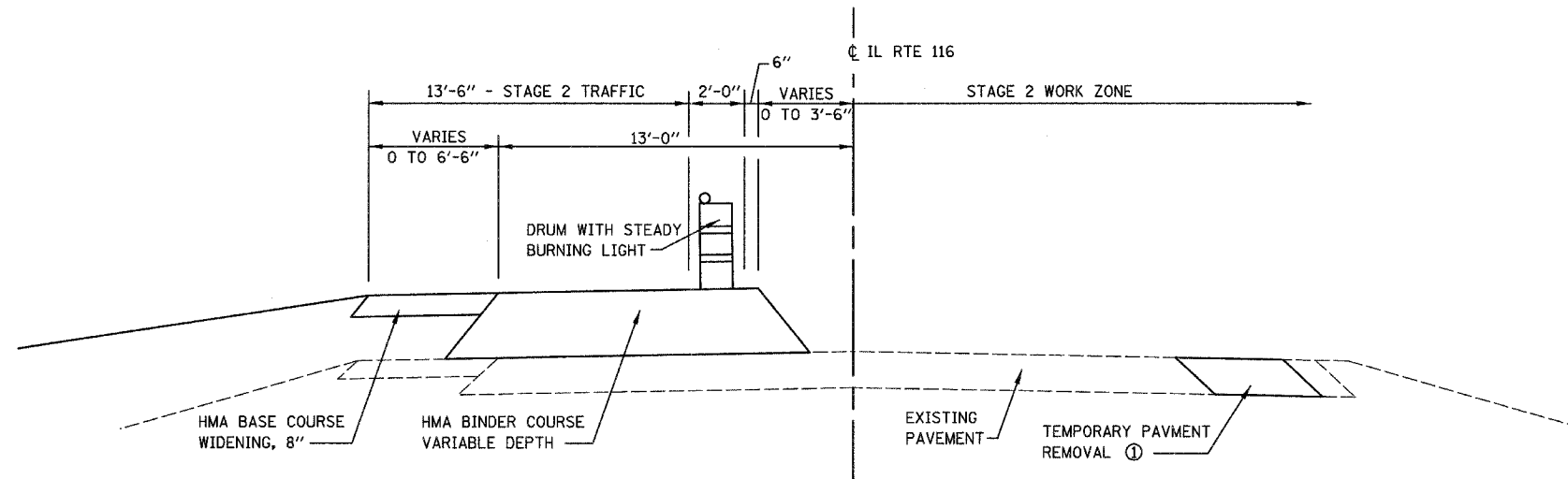
F.A.P. RTE.	SECTION	COUNTY	TOTAL SHEETS	SHEET NO.
681	115 BR	LIVINGSTON	32	12
STA.		TO STA.		
FED. ROAD DIST. NO.	ILLINOIS	FED. AID PROJECT		



**STAGE 2 CONSTRUCTION TYPICAL SECTION**  
(LOOKING WEST @ STRUCTURE)

**NOTES**

- ① THE TEMPORARY WIDENING SHALL REMAIN IN PLACE BENEATH THE PROPOSED PAVEMENT AS REQUIRED. THE TEMPORARY WIDENING BEYOND THE PROPOSED EDGE OF PAVEMENT THAT IS IN CONFLICT WITH THE AGGREGATE SHOULDER SHALL BE REMOVED. THE COST OF WHICH WILL BE PAID FOR AS "TEMPORARY PAVEMENT REMOVAL."



**STAGE 2 CONSTRUCTION TYPICAL SECTION**  
(LOOKING WEST @ APPROACH)

REVISIONS	
NAME	DATE

ILLINOIS DEPARTMENT OF TRANSPORTATION

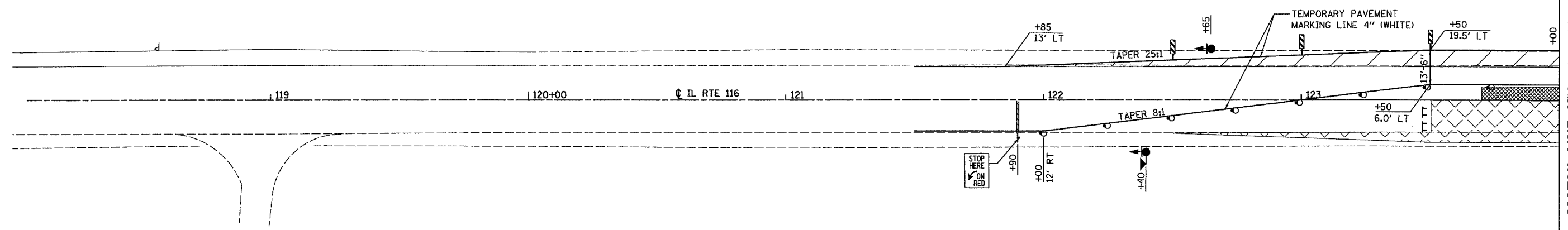
**STAGE CONSTRUCTION & TRAFFIC CONTROL**

FAP ROUTE 681  
SECTION 115 BR  
LIVINGSTON COUNTY

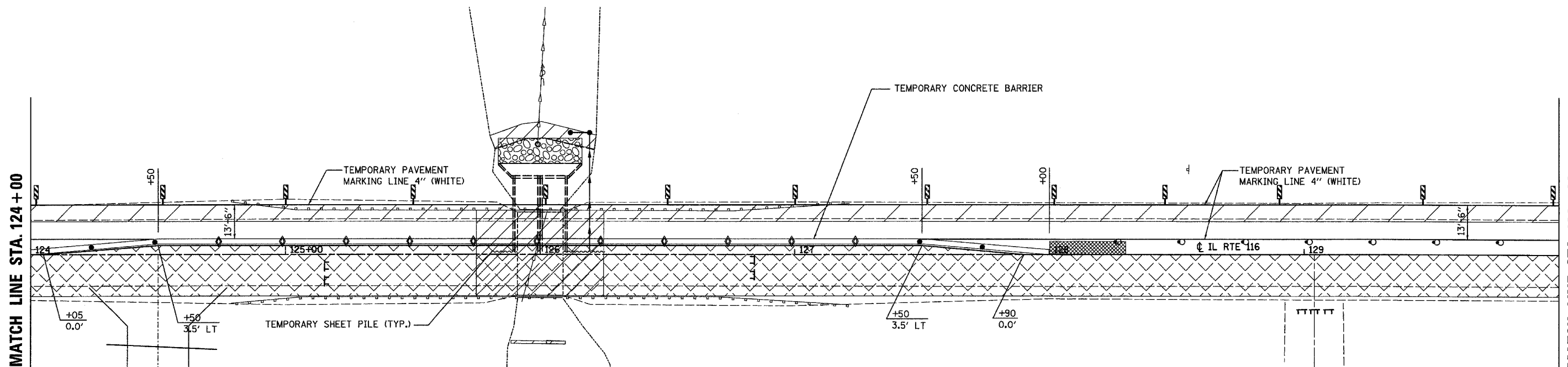


F.A.P. RTE.	SECTION	COUNTY	TOTAL SHEETS	SHEET NO.
681	115 BR	LIVINGSTON	32	13

STA.	TO STA.
FED. ROAD DIST. NO.	ILLINOIS FED. AID PROJECT



MATCH LINE STA. 124 + 00

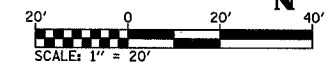


MATCH LINE STA. 124 + 00

MATCH LINE STA. 130 + 00

**LEGEND**

- TRAFFIC SIGNALS
- TRAFFIC SIGNALS WITH MICROWAVE DETECTORS
- DRUM WITH STEADY BURNING LIGHT
- STOP LINE 24"
- IMPACT ATTENUATORS, TEMPORARY (FULLY-REDIRECTIVE, NARROW) TEST LEVEL 3
- DOUBLE VERTICAL PANEL
- TYPE C BI-DIRECTIONAL REFLECTOR
- TYPE III BARRICADE WITH FLASHING LIGHTS
- STEADY BURNING LIGHTS AND DOUBLE VERTICAL PANELS
- WORK AREA
- SIGN
- TEMPORARY HMA BASE COURSE WIDENING, 8"
- DIRECTION OF TRAFFIC



REVISIONS	
NAME	DATE

ILLINOIS DEPARTMENT OF TRANSPORTATION

**STAGE 2 CONSTRUCTION & TRAFFIC CONTROL**

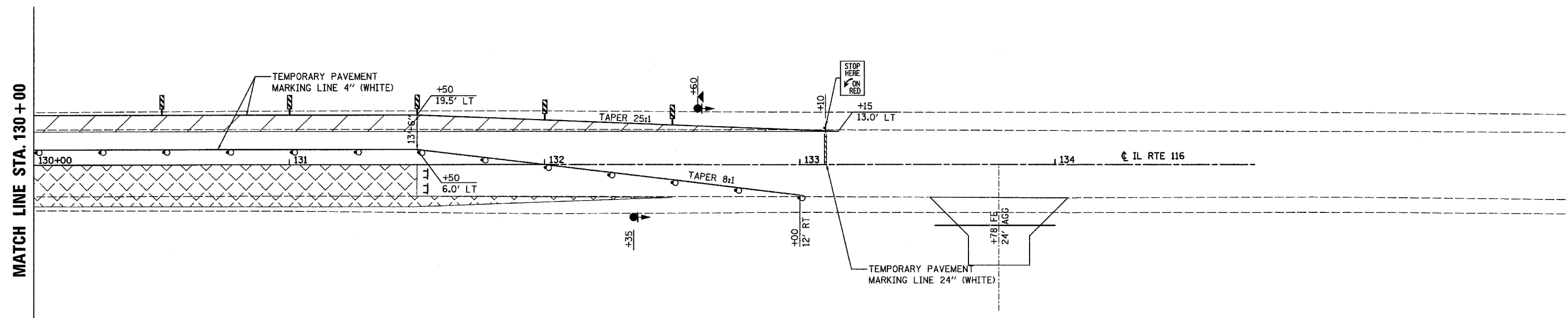
FAP ROUTE 681  
SECTION 115 BR  
LIVINGSTON COUNTY

PLOT DATE = 8/20/2007  
 FILE NAME = H:\V\6804\Files Copied From M Drive\Microstation\Working Project Files\shes2.dgn  
 USER NAME = RUSBY

**TRAFFIC CONTROL PLAN - STAGE 2**

F.A.P. RTE.	SECTION	COUNTY	TOTAL SHEETS	SHEET NO.
681	115 BR	LIVINGSTON	32	14

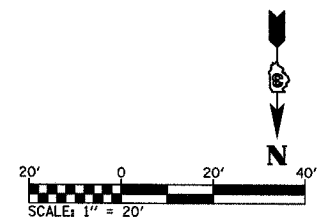
STA.	TO STA.
FED. ROAD DIST. NO.	ILLINOIS FED. AID PROJECT



NOTES:  
 1. SIGNING AND BARRICADES OUTSIDE OF THE LIMITS OF THE STOP BARS SHALL BE IN ACCORDANCE WITH STANDARD 701321

**LEGEND**

- TRAFFIC SIGNALS
- TRAFFIC SIGNALS WITH MICROWAVE DETECTORS
- DRUM WITH STEADY BURNING LIGHT
- STOP LINE 24"
- IMPACT ATTENUATORS, TEMPORARY (FULLY-REDIRECTIVE, NARROW) TEST LEVEL 3
- DOUBLE VERTICAL PANEL
- TYPE C BI-DIRECTIONAL REFLECTOR
- TYPE III BARRICADE WITH FLASHING LIGHTS
- STEADY BURNING LIGHTS AND DOUBLE VERTICAL PANELS
- WORK AREA
- SIGN
- TEMPORARY HMA BASE COURSE WIDENING, 8'
- DIRECTION OF TRAFFIC



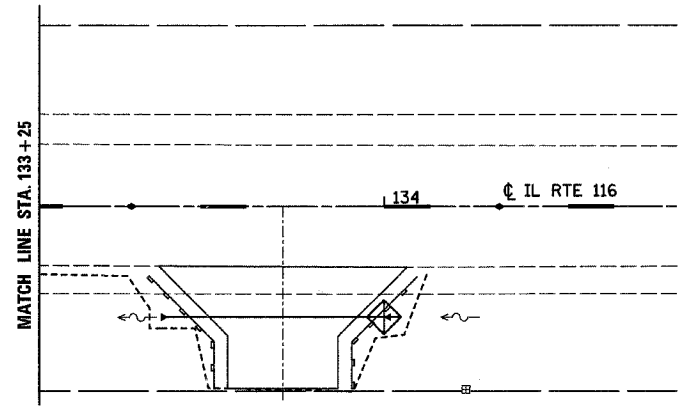
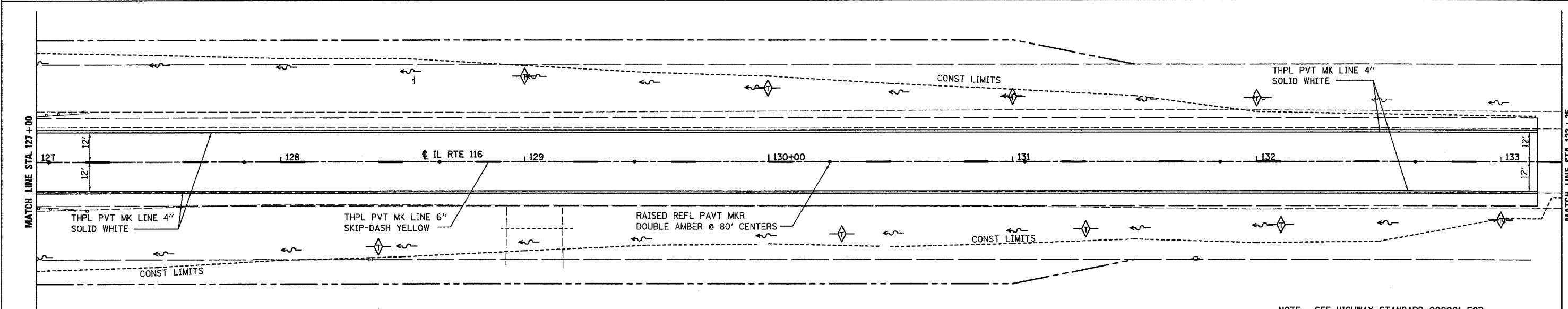
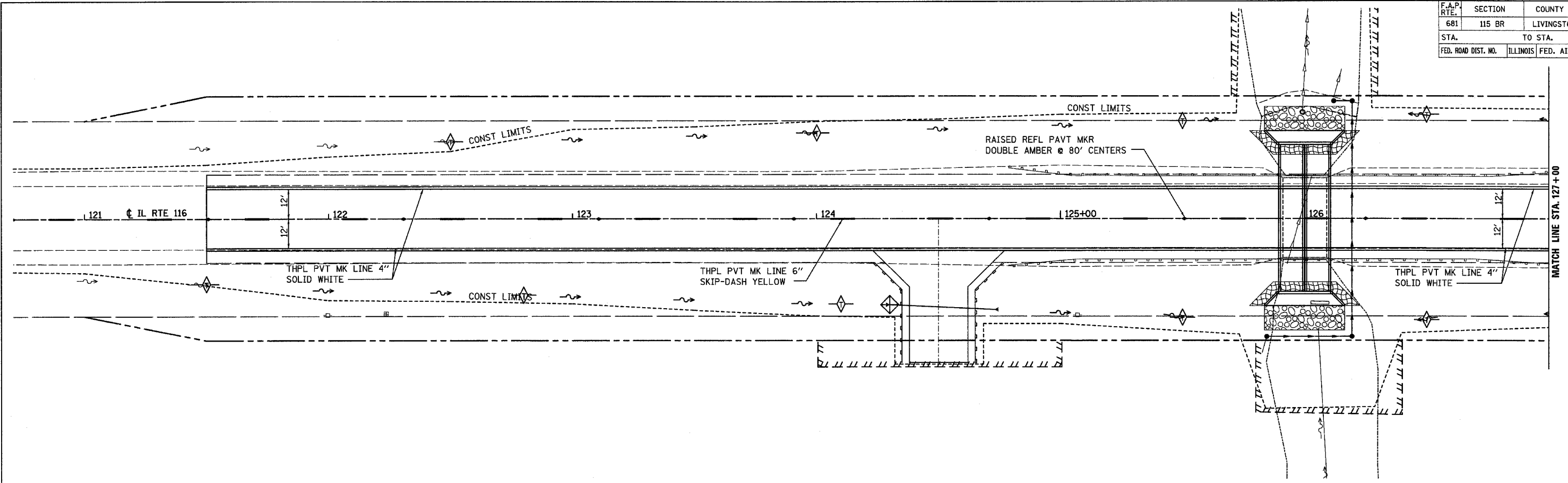
REVISIONS	
NAME	DATE

ILLINOIS DEPARTMENT OF TRANSPORTATION  
**STAGE 2 CONSTRUCTION & TRAFFIC CONTROL**  
 FAP ROUTE 681  
 SECTION 115 BR  
 LIVINGSTON COUNTY

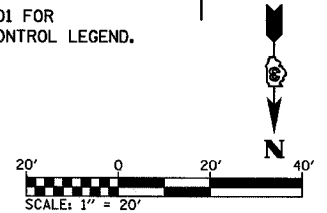
**TRAFFIC CONTROL PLAN - STAGE 2**

PLOT DATE = 08/26/2007  
 FILE NAME = H:\P\26054\Files Copied from M Drive\Microstation\Microstation (Working Project Files)\sheets\02.dgn  
 PLOT SCALE = 28.0000 / / IN.  
 USER NAME = #USER#

F.A.P. RTE.	SECTION	COUNTY	TOTAL SHEETS	SHEET NO.
681	115 BR	LIVINGSTON	32	15
STA.		TO STA.		
FED. ROAD DIST. NO.	ILLINOIS	FED. AID PROJECT		



NOTE: SEE HIGHWAY STANDARD 000001 FOR LANDSCAPING AND EROSION CONTROL LEGEND.



REVISIONS	
NAME	DATE

ILLINOIS DEPARTMENT OF TRANSPORTATION  
**EROSION CONTROL & PAVEMENT MARKING**  
 FAP ROUTE 681  
 SECTION 115 BR  
 LIVINGSTON COUNTY

PLOT DATE = 8/28/2007  
 FILE NAME = H:\P\26065\Files Copied from M Drive\Microstation\Working Project Files\shesha64.dgn  
 PLOT SCALE = 28.0000 / / IN.  
 USER NAME = #USER#

S.E. 1/4 OF SEC. 24, T.28N., R.8E. OF THE 3RD P.M.

F.A.P. RTE.	SECTION	COUNTY	TOTAL SHEETS	SHEET NO.
681	115 BR	LIVINGSTON	32	16
STA.		TO STA.		
FED. ROAD DIST. NO.		ILLINOIS FED. AID PROJECT		

S.W. 1/4 OF SEC. 24,  
T.28N., R.8E. OF THE 3RD P.M.

**PARCEL 3UK0003**

**KREGG HARMS, et al.**

TOTAL HOLDING = 240.572 AC.±  
 TOTAL R.O.W. REQUIRED = 0.581 AC.±  
 AREA IN EXIST. R.O.W. = 0.408 AC.±  
 NET R.O.W. REQUIRED = 0.173 AC.±  
 REMAINDER = 239.991 AC.±  
 TOTAL TEMPORARY EASEMENT = 0.066 AC.±  
 T.E.-1 = 1800 SQ.FT.  
 T.E.-2 = 1072 SQ.FT.  
 PURPOSE: GRADING & SHAPING

3-T.E.-2		
POINT TO POINT	BEARING	DISTANCE
1 TO 2	S.88°59'51"W.	107.23'
2 TO 3	N.01°00'09"W.	10.00'
3 TO 4	N.88°59'51"E.	107.14'
4 TO 1	S.01°31'10"E.	10.00'

**PARCEL 3UK0002**

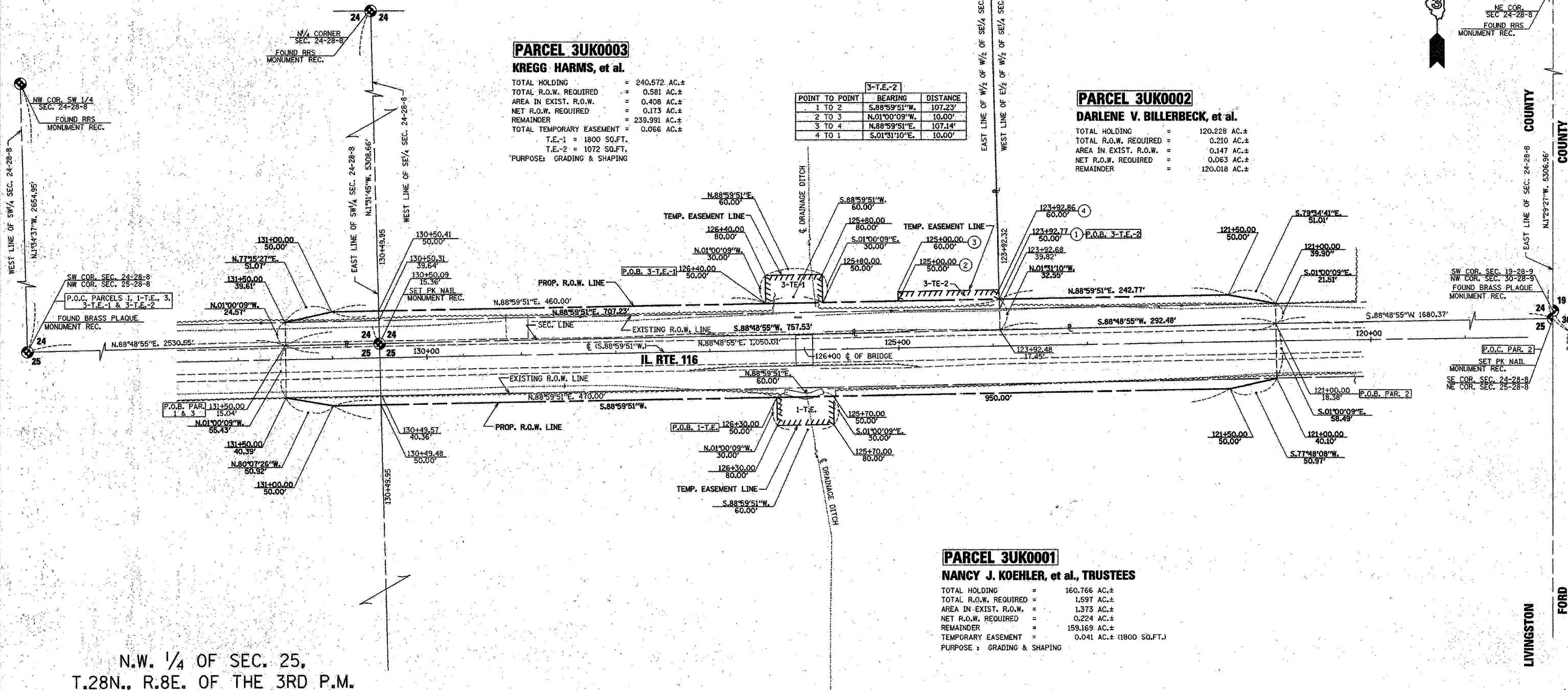
**DARLENE V. BILLERBECK, et al.**

TOTAL HOLDING = 120.228 AC.±  
 TOTAL R.O.W. REQUIRED = 0.210 AC.±  
 AREA IN EXIST. R.O.W. = 0.147 AC.±  
 NET R.O.W. REQUIRED = 0.063 AC.±  
 REMAINDER = 120.018 AC.±

**PARCEL 3UK0001**

**NANCY J. KOEHLER, et al., TRUSTEES**

TOTAL HOLDING = 160.766 AC.±  
 TOTAL R.O.W. REQUIRED = 1.597 AC.±  
 AREA IN EXIST. R.O.W. = 1.373 AC.±  
 NET R.O.W. REQUIRED = 0.224 AC.±  
 REMAINDER = 159.169 AC.±  
 TEMPORARY EASEMENT = 0.041 AC.± (1800 SQ.FT.)  
 PURPOSE: GRADING & SHAPING



N.W. 1/4 OF SEC. 25,  
T.28N., R.8E. OF THE 3RD P.M.

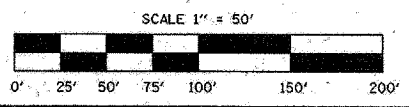
N.E. 1/4 OF SEC. 25, T.28N., R.8E. OF THE 3RD P.M.

I VINCENT D. BRANDOW, HEREBY CERTIFY THAT I AM A PROFESSIONAL LAND SURVEYOR OF THE STATE OF ILLINOIS, THAT THE SURVEY OF PROPOSED F.A.P. 681 (IL. RTE. 116) WAS MADE BY RENWICK & ASSOCIATES, INC. UNDER MY DIRECTION, AND THAT THE SURVEY IS TRUE AND COMPLETE AS SHOWN TO THE BEST OF MY KNOWLEDGE AND BELIEF THAT ALL MONUMENTS AND MARKS ARE OF THE CHARACTER AND OCCUPY THE POSITION SHOWN THEREON, AND ARE SUFFICIENT TO ENABLE THE SURVEY TO BE RETRACED. THIS PROFESSIONAL SERVICE CONFORMS TO THE CURRENT ILLINOIS MINIMUM STANDARDS FOR A BOUNDARY SURVEY.



*V. D. Brandow*  
 ILLINOIS PROFESSIONAL LAND SURVEYOR  
 NO. 2655

DATE: \_\_\_\_\_  
 SURVEY BOOK NO. \_\_\_\_\_  
 11-30-08  
 EXPIRATION DATE



RIGHT OF WAY PLANS	
ROUTE	F.A.P. 681 (IL 116)
SECTION	115BR
PROJECT	
COUNTY	LIVINGSTON
JOB NUMBER	R-93-003-07
STATION	120+00 TO 132+00
SHEET	1 OF 1 SCALE 1" = 50'

NOTE: ALL BEARINGS ARE REFERENCED TO THE ILLINOIS STATE PLANE COORDINATE SYSTEM, EAST ZONE (N.A.D. 83)

ROW PLAN

PLOT DATE = 08/20/2007  
 FILE NAME = H:\Projects\115BR\115BR.dwg  
 PLOT SCALE = 20.000000 / 1  
 USER NAME = WISEN

B.M.: Chiseled "X" on top of rail post, Sta. 125+85.89, 17.85' lt.  
Elev. 674.52

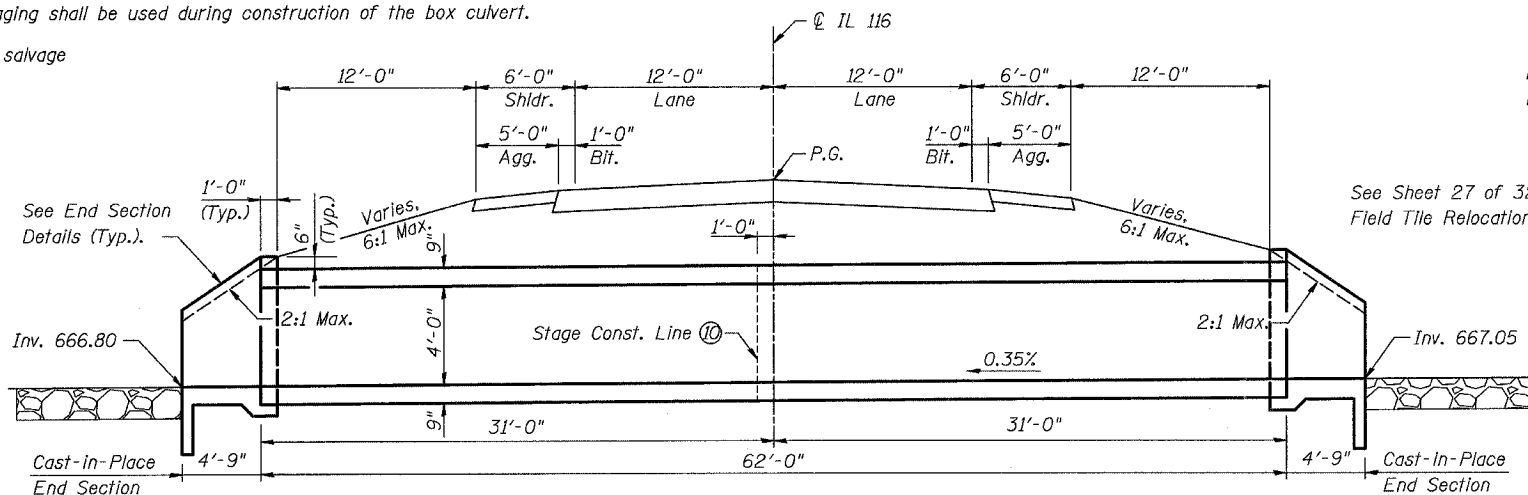
Existing Structure: SN 053-0105 was originally constructed in 1928. The superstructure was replaced and the substructure was widened in 1972. The superstructure consists of a single span of 18' precast concrete channel beams on closed abutments. The back-to-back abutments dimension measures 18'-0" while the out-to-out width measures 33'-9". The existing superstructure and substructure shall be removed. Staging shall be used during construction of the box culvert.

No salvage

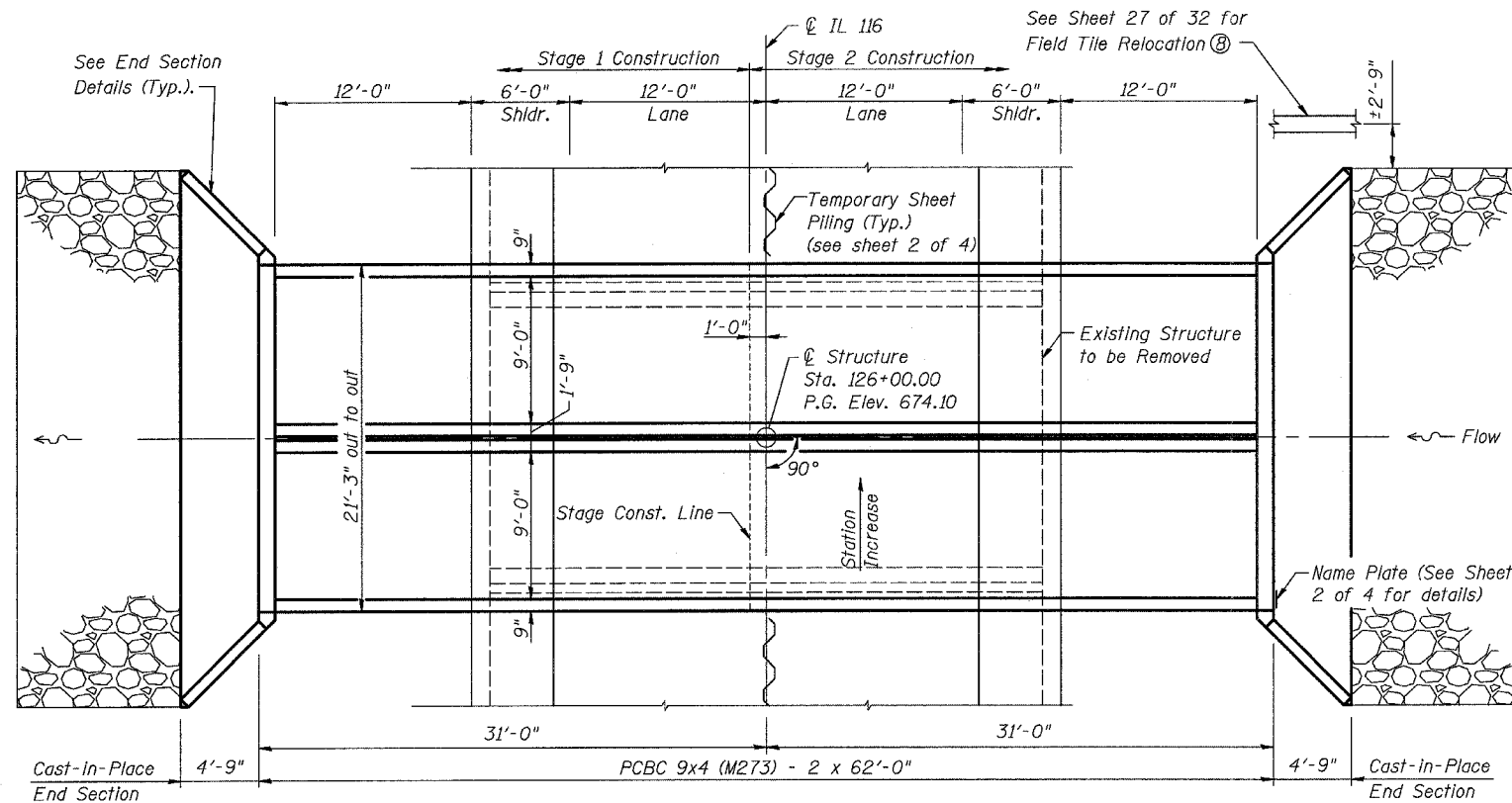
STATE OF ILLINOIS  
DEPARTMENT OF TRANSPORTATION

ROUTE NO. FAP 681	SECTION 115 BR	COUNTY LIVINGSTON	TOTAL SHEETS 32	SHEET NO. 17	SHEET NO. 1 4 SHEETS
FED. ROAD DIST. NO. 7		ILLINOIS	FED. AID PROJECT-		

Contract # 66690



**ELEVATION**  
(Looking west)



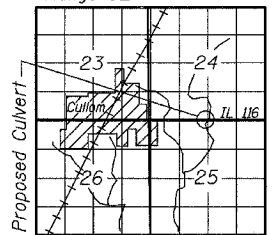
**PLAN**

**WATERWAY INFORMATION**

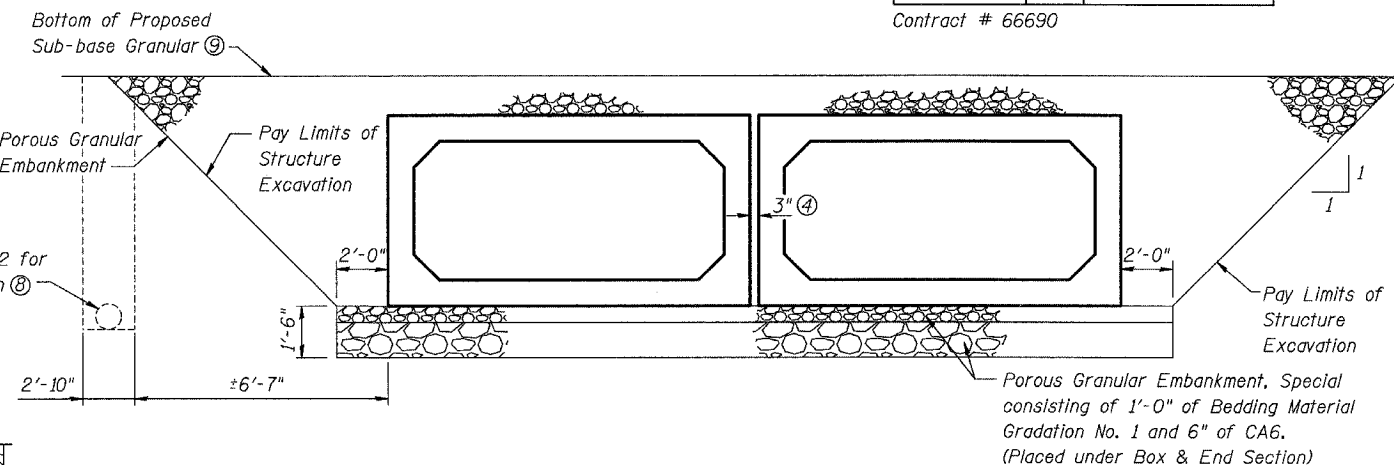
Drainage Area = 1.10 sq. mi. Low Grade Elev. 674.10 @ Sta. 128+00

Flood	Freq. Yr.	Q C.F.S.	Opening Sq. Ft.		Nat. H.W.E.	Head - Ft.		Headwater El.	
			Exist.	Prop.		Exist.	Prop.	Exist.	Prop.
Design	10	221	40	45	670.1	0.8	0.2	670.9	670.3
Base	50	332	41	50	670.4	1.5	0.5	671.9	670.9
Overtopping	100	378	41	50	670.4	1.9	0.7	672.3	671.1
Max. Calc.	75	360	41		670.4	1.8		672.2	
		500	484	52	670.5		1.3		671.8

Range 8E 3rd P.M.



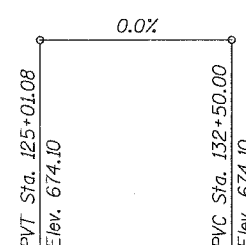
**LOCATION SKETCH**



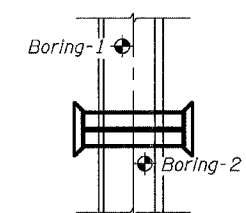
**DOUBLE 9' x 4' PRECAST CONCRETE BOX CULVERT  
SECTION THROUGH BARREL**

**GENERAL NOTES**

- 1 Precast Concrete Box Culvert sections shall conform to the requirements of Article 540.06 of the Standard Specifications and the applicable requirements of AASHTO M 273.
- 2 Reinforcement bars shall conform to the requirements of ASTM A 706 Gr 60 (IL Modified). See Special Provisions.
- 3 Lifting holes shall be filled with concrete plugs and mastic after box sections are in place.
- 4 Fill space between boxes with class SI Concrete in accordance with Article 540.06 of the Standard Specifications. Cost included with Precast Concrete Box Culvert 9'x4' (M273).
- 5 Excavation behind existing abutment walls shall be performed to balance front and back soil pressure before removing the existing superstructure. The Contractor shall sawcut the upper portion of the existing abutment at the stage removal line before Stage 1 removal to ensure the remaining portion will not be prematurely damaged. Cost of sawcut included with Removal of Existing Structures.
- 6 If the Contractor chooses to alter the temporary cantilevered sheet piling design requirements shown on the plans, a design submittal including plan details and calculations will be required for review and acceptance by the Engineer.
- 7 The Contractor shall connect the first sheet to the existing abutment wall to ensure stability of sheets driven to the top of the existing footing. This connection shall be reviewed and accepted by the Engineer and included in the cost for Temporary Sheet Piling.
- 8 Trench Backfill associated with field tile relocation will be included in the cost for Porous Granular Embankment.
- 9 Porous Granular Embankment shall extend the entire length of the box, maintaining 2' of earth above the Porous Granular Embankment outside of the roadway shoulders.
- 10 See Roadway Plans for staging.



**PROFILE GRADE**  
(Along Centerline of Roadway)



**BORING LOCATIONS**

**DESIGN SPECIFICATIONS**  
1996 AASHTO with 1997 thru 2002 Interims

**LOADING HS20-44**

Allow 50#/sq. ft. for future wearing surface.  
Design Fill Height = < 2 ft.

**DESIGN STRESSES**

Precast  
f'c = 5,000 psi  
fy = 65,000 psi (welded wire fabric)  
Cast-In-Place  
f'c = 3,500 psi  
fy = 60,000 psi (reinforcement)

**TOTAL BILL OF MATERIAL**

Item	Unit	Total
Porous Granular Embankment	Cu. Yd.	201
Porous Granular Embankment, Special	Cu. Yd.	102
Removal of Existing Structures	L. Sum	1
Bridge Rail Removal	Foot	76
Structure Excavation	Cu. Yd.	252
Concrete Structures	Cu. Yd.	17.5
Reinforcement Bars	Pound	950
Temporary Sheet Piling	Sq. Ft.	172
Name Plates	Each	1
Precast Concrete Box Culvert 9'x4' (M273)	Foot	124

PREPARED BY  
OATES ASSOCIATES, INC.  
DATE: 8/20/2007  
E-CHECKS: 11/30/2008

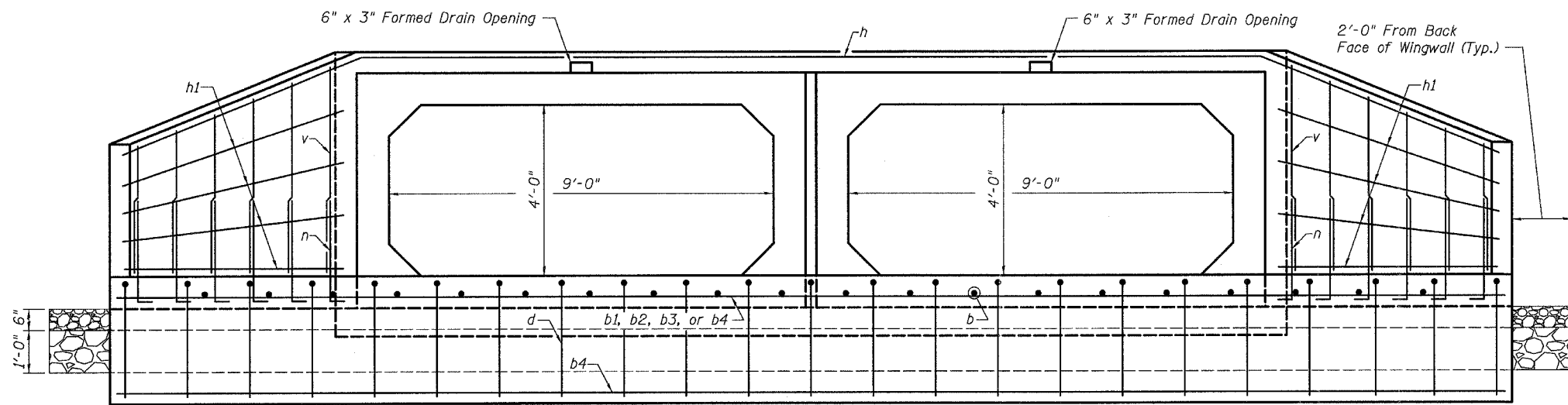
**GENERAL PLAN**  
**IL 116 OVER DRAINAGE DITCH**  
**FAP ROUTE 681 - SECTION 115BR**  
**LIVINGSTON COUNTY**  
**STATION 126+00.00**  
**STRUCTURE NO. 053-2568**

STATE OF ILLINOIS  
DEPARTMENT OF TRANSPORTATION

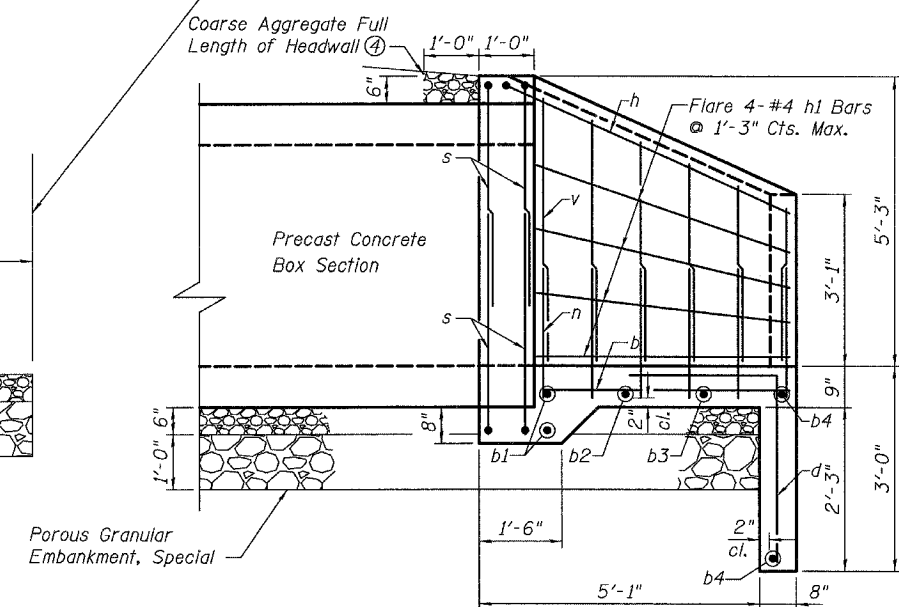
Pay Limits for Structure  
Excavation and Porous  
Granular Embankment, Special

ROUTE NO. FAP 681	SECTION 115 BR	COUNTY LIVINGSTON	TOTAL SHEETS 32	SHEET NO. 18	SHEET NO. 2 4 SHEETS
FED. ROAD DIST. NO. 7		ILLINOIS	FED. AID PROJECT		

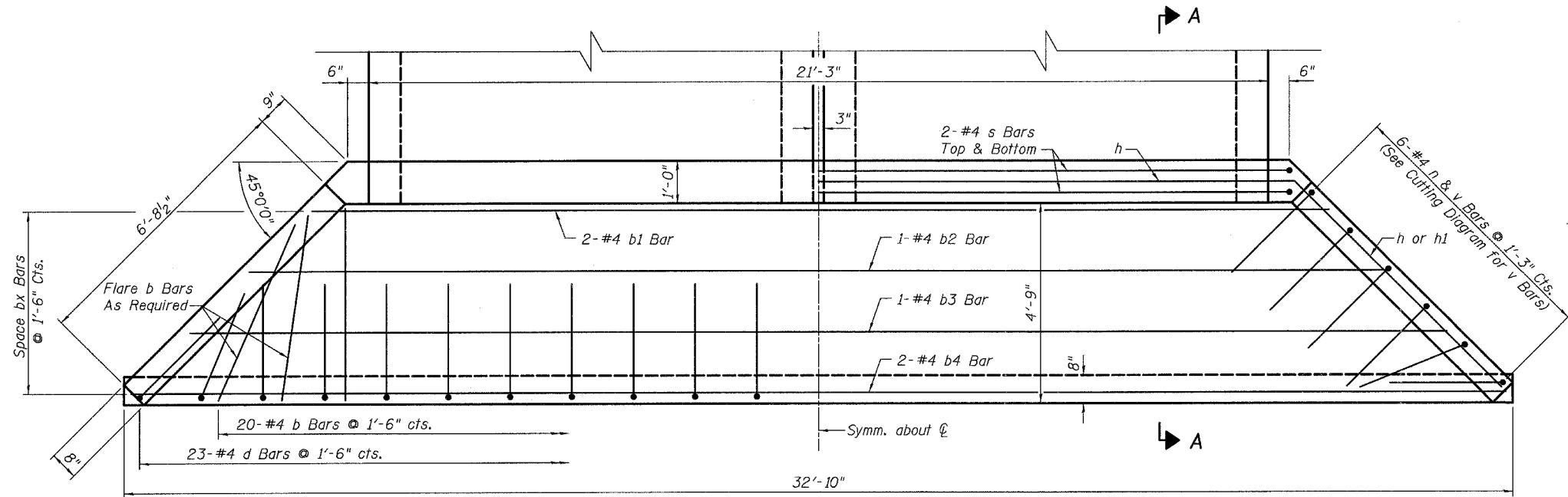
Contract #66690



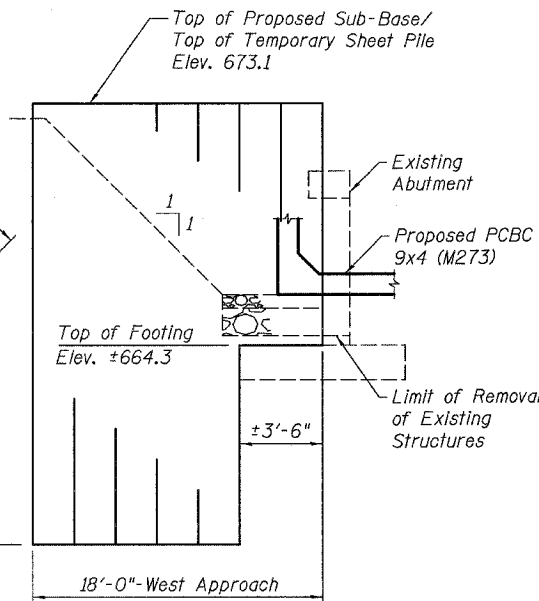
END ELEVATION



SECTION A-A



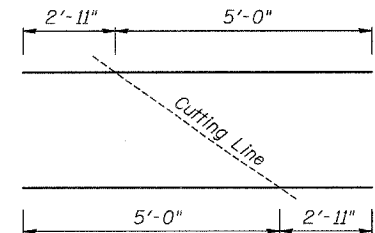
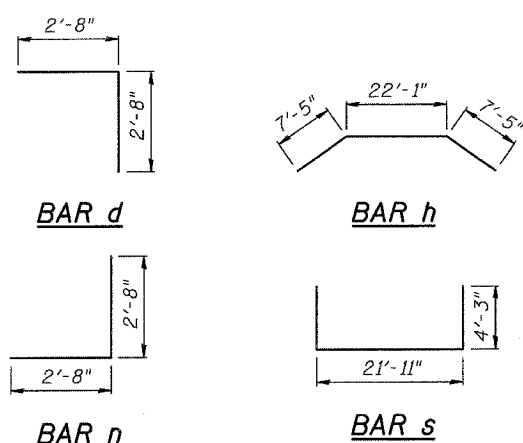
PLAN



TEMPORARY SHEET PILE DETAIL

BILL OF MATERIAL  
(Two End Sections)

Bar	No.	Size	Length	Shape	
b	40	#4	4'-5"	—	
b1	4	#4	23'-6"	—	
b2	2	#4	26'-6"	—	
b3	2	#4	29'-6"	—	
b4	4	#4	32'-6"	—	
d	46	#4	5'-4"	—	
h	2	#4	36'-11"	—	
h1	16	#4	7'-0"	—	
n	24	#4	5'-4"	—	
s	8	#4	30'-5"	—	
v	12	#4	7'-11"	—	
Reinforcement Bars				Pound	950
Concrete Structures				Cu. Yd.	17.5



CUTTING DIAGRAM v BARS

Order v Bars full length. Cut bars as shown and use half in one Wingwall and half in the opposite Wingwall.

STATION 126+00  
BUILT 200 BY  
STATE OF ILLINOIS  
F.A.P. RTE. 681 SEC. 115 BR  
LOADING HS20  
STRUCTURE NO. 053-2568

NAME PLATE  
See Std. 515001

- Notes:
- Cast-In-Place Reinforced Concrete End Sections shall be constructed in accordance with Section 542 of the Standard Specifications.
  - Ends of Precast Concrete Box Culvert 9'x4' (M273) sections protruding thru Cast-In-Place Reinforced Concrete End Sections shall be cast without bell or spigot.
  - Bar lap lengths - #4 = 1'-8".
  - Cost of Coarse Aggregate Full Length of Headwall shall be included in the cost of "Concrete Structures".
  - Hard driving may be encountered during the sheet pile installation. The Contractor shall provide the appropriate driving equipment for the soil conditions indicated on the boring logs.

BOX CULVERT END SECTION  
IL 116 OVER DRAINAGE DITCH  
FAP ROUTE 681 - SECTION 115BR  
LIVINGSTON COUNTY  
STATION 126+00.00  
STRUCTURE NO. 053-2568



### SOIL BORING LOG

Page 1 of 2

Date 11/2/05

ROUTE IL 116 DESCRIPTION IL Rt 116 over Drainage Ditch LOGGED BY Larry Myers  
 SECTION 115BR LOCATION SW 1/4, SEC. 24, TWP. 28N, RNG. 8E, 3<sup>rd</sup> PM  
 COUNTY Livingston DRILLING METHOD Hollow Stem Auger HAMMER TYPE CME automatic

STRUCT. NO.	DEPT	BL	UC	MO	Surface Water Elev.	DEPT	BL	UC	MO
Station	TH	WS	S	IST	ft	TH	WS	S	IST
BORING NO.	H	S	Qu	T	ft	H	S	Qu	T
Station	(ft)	(/6")	(tsf)	(%)	ft	(ft)	(/6")	(tsf)	(%)
053-0105 126+00					649.20	3			
#1: S.B.L.: N Abut 126+25					647.70	6	4.4		12.8
50.00R W. of Cl.						10	S		
Ground Surface Elev. 659.70						3			
						2			
						2	1.5		19.1
						2	P		
						2			
						4	1.7		16.3
						6	B		
						2			
						3	1.0		15.8
						4	B		
						4			
						4	1.1		16.7
						3	B		
						1			
						3	1.0		16.5
						4	B		
						1			
						3	1.0		17.3
						5	B		
						3			
						7	3.4		18.5
						9	B		
						11	B		
						1			
						3	1.0		17.3
						5	B		
						3			
						7	3.4		18.5
						11	B		

The Unconfined Compressive Strength (UCS) Failure Mode is indicated by (B-Bulge, S-Shear, P-Penetrometer)  
 The SPT (N value) is the sum of the last two blow values in each sampling zone (AASHTO T206)  
 BBS, from 137 (Rev. 8-99)



### SOIL BORING LOG

Page 2 of 2

Date 11/2/05

ROUTE IL 116 DESCRIPTION IL Rt 116 over Drainage Ditch LOGGED BY Larry Myers  
 SECTION 115BR LOCATION SW 1/4, SEC. 24, TWP. 28N, RNG. 8E, 3<sup>rd</sup> PM  
 COUNTY Livingston DRILLING METHOD Hollow Stem Auger HAMMER TYPE CME automatic

STRUCT. NO.	DEPT	BL	UC	MO	Surface Water Elev.	DEPT	BL	UC	MO
Station	TH	WS	S	IST	ft	TH	WS	S	IST
BORING NO.	H	S	Qu	T	ft	H	S	Qu	T
Station	(ft)	(/6")	(tsf)	(%)	ft	(ft)	(/6")	(tsf)	(%)
053-0105 126+00						4			
#1: S.B.L.: N Abut 126+25						6	2.7		19.7
50.00R W. of Cl.						10	B		
Ground Surface Elev. 659.70						10			
						13			10.0
						12			12.3
						6			
						9	3.0		22.7
						9			
						9			
						9			
						11	4.0		17.6
						13			
						4			
						6	3.0		17.9
						12			
						7			
						12	6.7		18.1
						16			
						12			
						16	9.0		11.1
						17			
						12			
						17	9.0		12.4
						18			
						11			
						18	>4.5		15.0
						27	P		

The Unconfined Compressive Strength (UCS) Failure Mode is indicated by (B-Bulge, S-Shear, P-Penetrometer)  
 The SPT (N value) is the sum of the last two blow values in each sampling zone (AASHTO T206)  
 BBS, from 137 (Rev. 8-99)

PLOT DATE = 06/28/2007  
 FILE NAME = H:\P\2005\4\Files Copied From H Drive\Microstation\Working Structural Files\Boring sheets.dgn  
 PLOT SCALE = 50.00000 / IN.  
 USER NAME = #USER#

REVISIONS	
NAME	DATE

ILLINOIS DEPARTMENT OF TRANSPORTATION

#### STRUCTURE BORINGS

FAP ROUTE 681  
 SECTION 115 BR  
 LIVINGSTON COUNTY









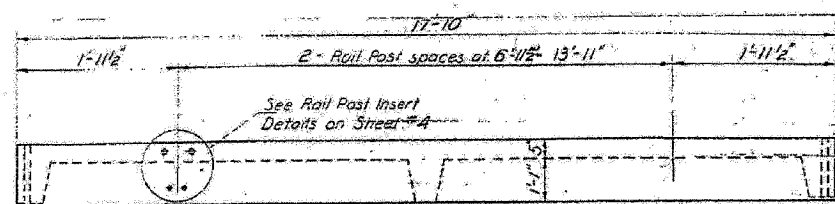


F.A.P. RTE.	SECTION	COUNTY	TOTAL SHEETS	SHEET NO.
681	115 BR	LIVINGSTON	32	23
STA.		TO STA.		
FED. ROAD DIST. NO.		ILLINOIS FED. AID PROJECT		

STATE OF ILLINOIS  
DEPARTMENT OF PUBLIC WORKS & BUILDINGS  
DIVISION OF HIGHWAYS

NO.	SECTION	QUANTITY	UNIT	AMOUNT
1	PRECAST CONCRETE BRIDGE SLAB	1	SLAB	35
2	REINFORCEMENT BARS	1	LB	1,800
3	FORMING	1	SQ. YD.	20,000

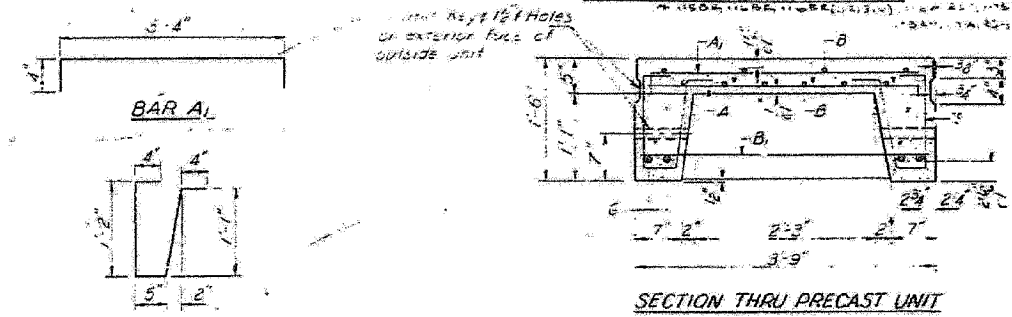
SHEET NO. 3  
5 SHEETS



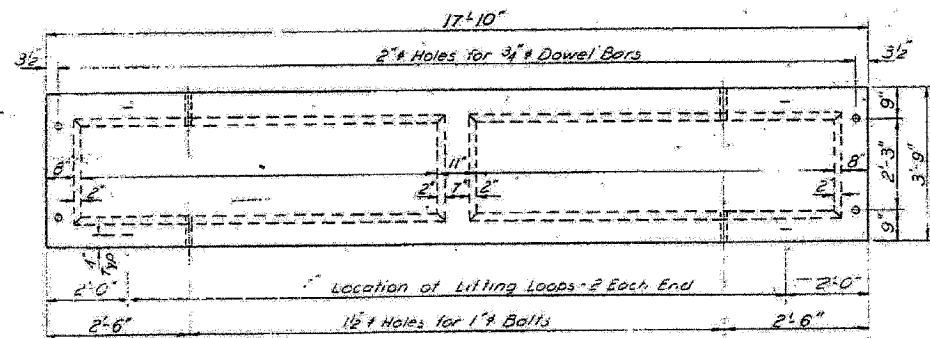
ELEVATION

**BAR LIST - ONE UNIT**  
Reinforcement to be cast into slab

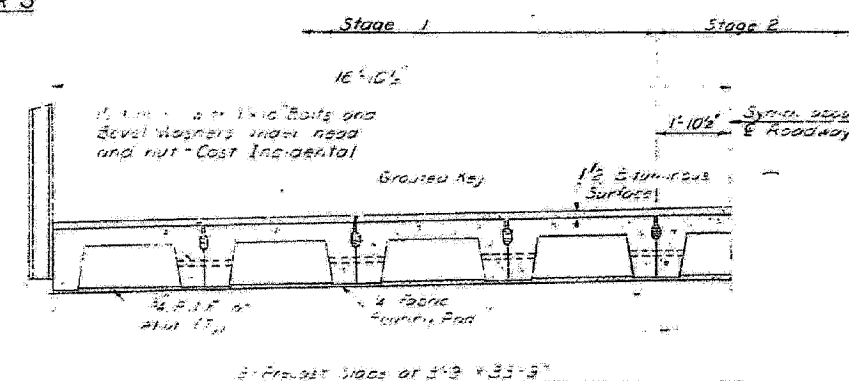
Bar	No.	Size	Length	Shape
A	47	#4	3'-3"	
A <sub>1</sub>	24	#4	4'-0"	
B	10	#4	17'-6"	
B <sub>1</sub>	6	#4	3'-6"	
G	4	#10	17'-6"	
S	38	#3	3'-4"	U



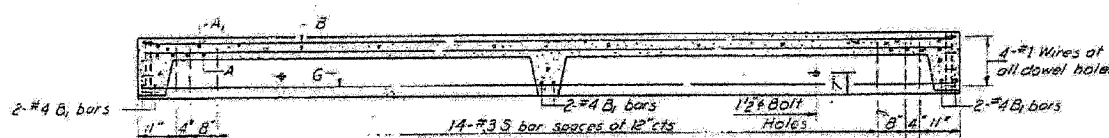
SECTION THRU PRECAST UNIT



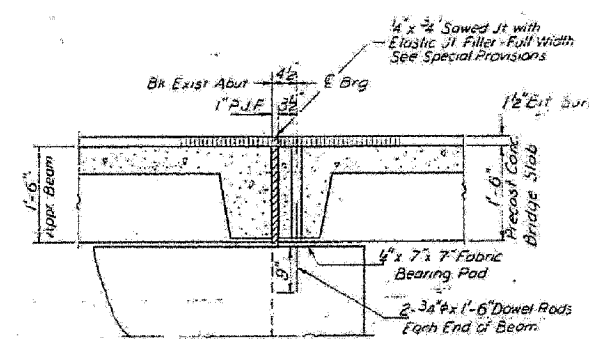
PLAN OF ONE UNIT



HALF CROSS SECTION  
Looking West



LONGITUDINAL SECTION

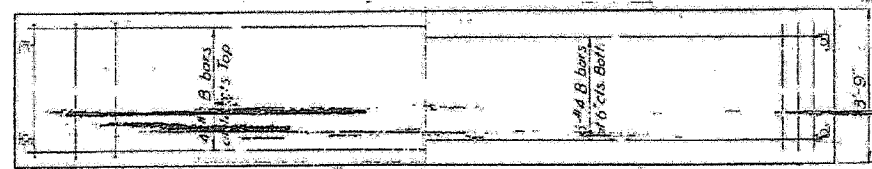


SECTION THRU ABUT.  
AT OUTSIDE BEAM

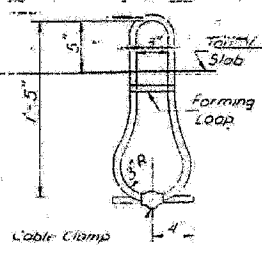
**NOTES**  
Unless otherwise approved by the Engineer, lifting loops shall be 2" x 13" cross wire rope with fiber core and shall have a minimum ultimate strength of 12,000 lbs. Loops shall be turned off after slab has been erected. Holes shall be drilled and anchor dowels grouted in place. Cost of reinforcement and accessories cast into the slab and bearing pads, furnishing, drilling for placing and grouting anchor dowels is included in unit bid price for Precast Concrete Bridge Slab.

**BILL OF MATERIAL**

Item	Unit	Quantity
Precast Concrete Bridge Slab	Sq Ft	602
Removal of Existing Substructure	EACH	1



SLAB REINFORCEMENT



LIFTING LOOP DETAIL

**STRESSES**  
4,500 psi  
1,800 psi  
20,000 psi  
HS-20

**SUPERSTRUCTURE**  
S.B.I. RT.116 SEC.115 BR  
LIVINGSTON COUNTY  
STATION 126+00

DESIGNED	EXAMINED
CHECKED R. P. Summer	ASSED
DRAWN R. P. Summer	APPROVED
CHECKED	

NOV 17 1970

**REVISIONS**

NAME	DATE

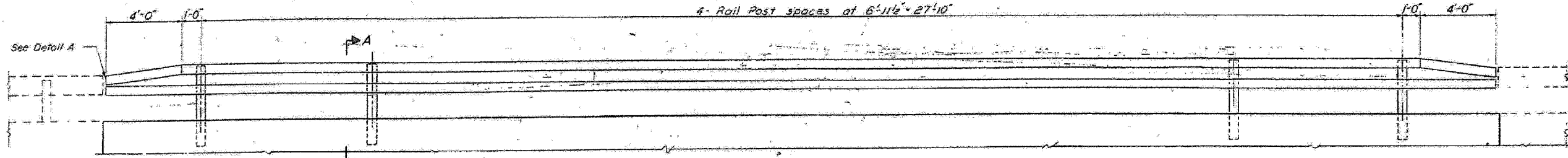
NO SCALE SHEET 3 OF 5  
ILLINOIS DEPARTMENT OF TRANSPORTATION  
**EXISTING BRIDGE PLAN  
FOR INFORMATION ONLY**  
FAP ROUTE 681  
SECTION 115 BR  
LIVINGSTON COUNTY

PLOT DATE = 8/28/2007  
 FILE NAME = H:\V\66690\F115.dwg  
 PLOT SCALE = 28.0000 / 1 IN.  
 USER NAME = RUSBY

STATE OF ILLINOIS  
DEPARTMENT OF PUBLIC WORKS & BUILDINGS  
DIVISION OF HIGHWAYS

PROJECT NO.	SECTION	COUNTY	TOTAL SHEETS	SHEET NO.
681	115 BR	LIVINGSTON	32	24

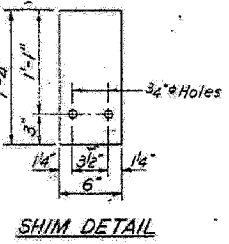
F.A.P. RTE.	SECTION	COUNTY	TOTAL SHEETS	SHEET NO.
681	115 BR	LIVINGSTON	32	24
STA.		TO STA.		
FED. ROAD DIST. NO.	ILLINOIS	FED. AID PROJECT		



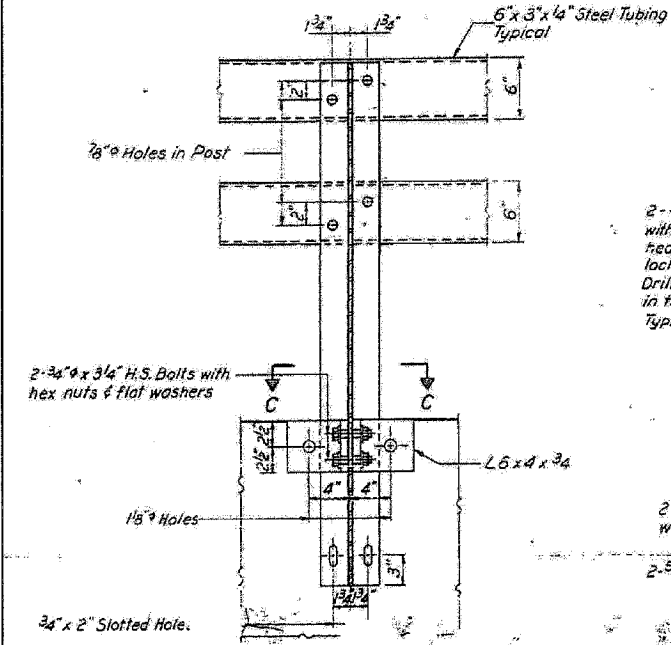
**ELEVATION**  
Showing inside face of railing

**NOTES**

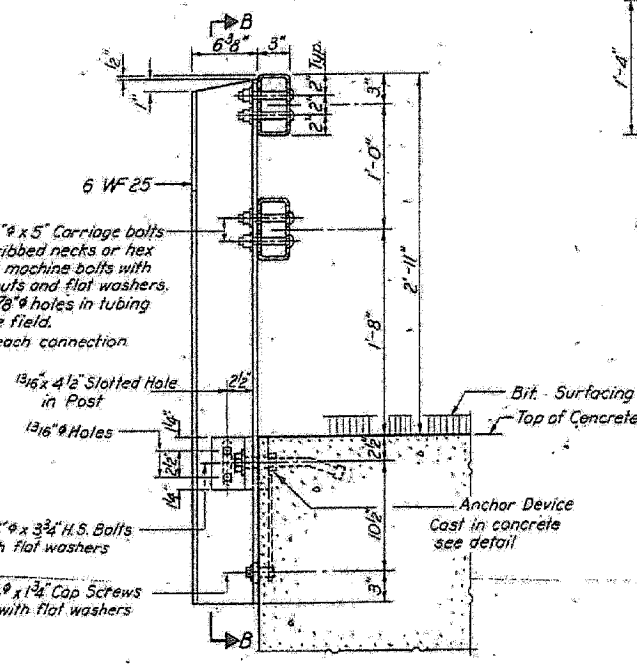
Hollow structural steel tubing shall conform to the requirements of ASTM designation A-501 "Hot Formed Welded and Seamless Carbon Steel Structural Tubing."  
All other steel shapes and plates shall conform to the requirements of ASTM designation A-36 except posts shall conform to ASTM A-441.  
Bolts, cap screws, and nuts shall conform to the requirements of ASTM designation A-307 except for high strength bolts, nuts and washers noted which shall conform to ASTM designation A-325.  
All bolts, nuts, cap screws, washers and lock washers shall be galvanized in accordance with ASTM designation A-153.  
All posts, railing, rail splices, anchor devices and angles shall be galvanized after shop fabrication in accordance with ASTM designation A-123 and A-385. Galvanized rail shall not be painted.  
Railing shall be in accordance with Section 508 of the Standard Specifications, except as noted, and shall be paid for at the contract unit price per lineal foot for STEEL RAILING, TYPE N  
All field drilled holes shall be coated with an approved zinc rich paint before erection.  
The lower portion of the post flange in contact with concrete shall receive two coats of asphalt paint conforming to Section 714.08 Type B or place 1/2" fabric bearing pad between the post and concrete.  
The 3/4" high strength bolts used to connect the 6x4x3/4 angles to the post shall be tightened in accordance with Article 710.11 of the Standard Specifications. The 1" high strength bolts connecting the angles to the concrete beam shall be tightened to a snug fit and given an additional 1/8 turn.  
For multi-span bridges, sufficient 1/2" x 6" x 1-4" galvanized steel shims shall be provided to align rail between adjacent spans. Cast incidental to Steel Railing.



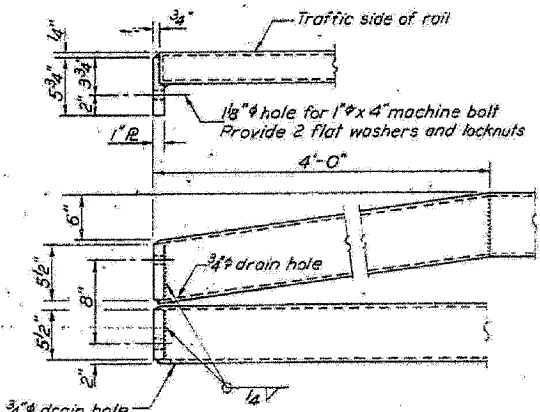
**SHIM DETAIL**



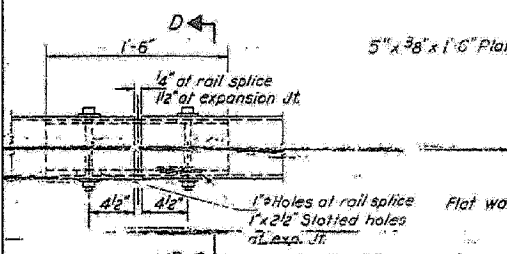
**SECTION B-B**



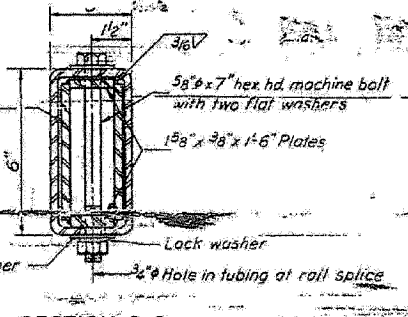
**SECTION A-A**



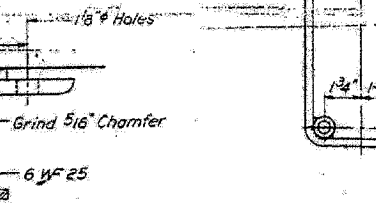
**DETAIL A**



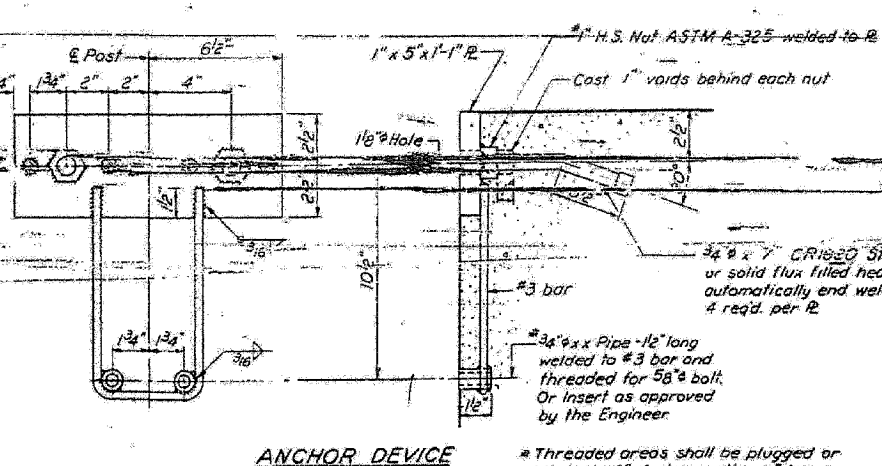
**RAIL SPLICE**



**SECTION D-D**



**SECTION C-C**



**ANCHOR DEVICE**

**BILL OF MATERIAL**

Item	Unit	Quantity
STEEL RAILING, TYPE N	Lin. Ft.	76

**TYPE N  
STEEL RAILING  
S.B.I. RT.116 SEC.115 BR  
LIVINGSTON COUNTY  
STATION 126+00**

DESIGNED	R. P. Summer
CHECKED	R. R. S.
DRAWN	J.L. Armstrong
CHECKED	R. P. Summer

EXAMINED	Nov 17 1970
PASSED	
APPROVED	

PLOT DATE = 06/28/2007  
 FILE NAME = H:\P\66690\F115 BR.dwg  
 PLOT SCALE = 28.0000 / 1 IN.  
 USER NAME = JUSER

REVISIONS	
NAME	DATE

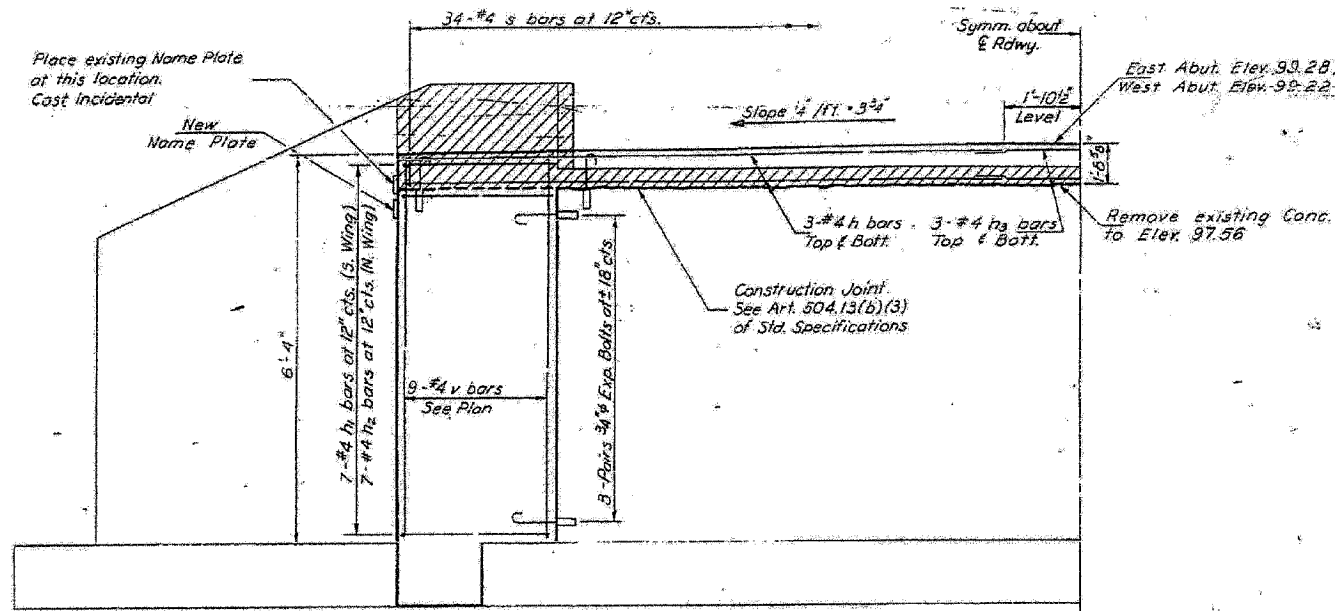
STATE OF ILLINOIS  
DEPARTMENT OF PUBLIC WORKS & BUILDINGS  
DIVISION OF HIGHWAYS

PROJECT NO.	SECTION	COUNTY	TOTAL SHEETS	SHEET NO.
115 BR	115 BR	LIVINGSTON	32	25

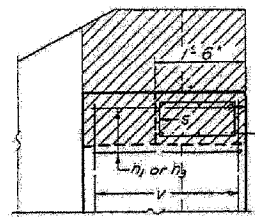
F.A.P. RTE.	SECTION	COUNTY	TOTAL SHEETS	SHEET NO.
681	115 BR	LIVINGSTON	32	25

STA.	TO STA.

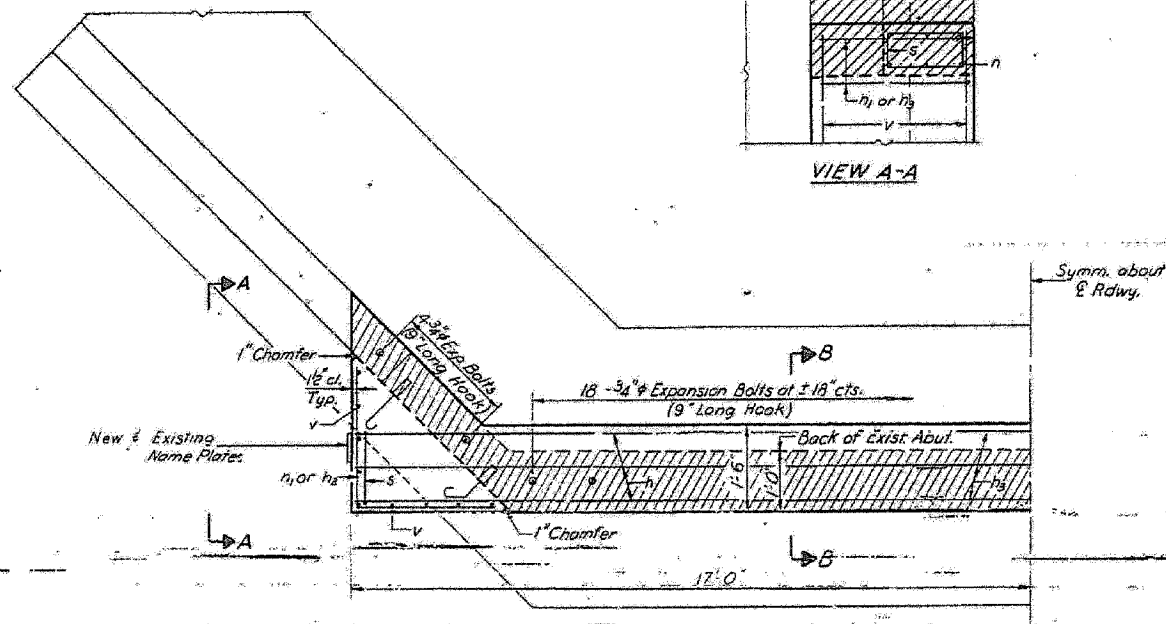
FED. ROAD DIST. NO.	ILLINOIS	FED. AID PROJECT



ELEVATION

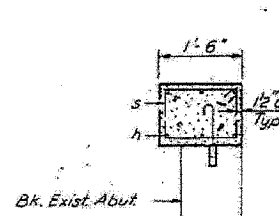


VIEW A-A



PLAN

NOTES:  
Hatched area indicates Concrete Removal. Reinforcement extending into removed areas shall be cleaned and incorporated into the new construction.  
Expansion bolts shall be anchored in sound concrete.  
All edges shall have standard 3/4 chamfers except as noted.



SECTION B-B

Bar	No.	Size	Length	Shape
n	12	#4	6'-0"	L
h1	14	#4	7'-6"	L
h2	14	#4	6'-0"	L
h3	12	#4	10'-0"	L
s	60	#4	4'-5"	□
v	36	#4	6'-0"	□

Class A Concrete	Cu Yds.	T.E. 2
Reinforcement Bars	Lbs.	770
Expansion Bolts 3/4"	Each	76

ABUTMENTS  
S.B.T. RT. 116 SEC. 115 BR  
LIVINGSTON COUNTY  
STATION 125+00

REVISIONS	
NAME	DATE

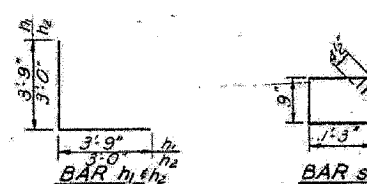
ILLINOIS DEPARTMENT OF TRANSPORTATION

EXISTING BRIDGE PLAN  
FOR INFORMATION ONLY

FAP ROUTE 681  
SECTION 115 BR  
LIVINGSTON COUNTY

DESIGNED	<i>R. P. Summer</i>
CHECKED	<i>R. P. Summer</i>
DRAWN	<i>R. P. Summer</i>
CHECKED	<i>R. P. Summer</i>

EXAMINED	<i>[Signature]</i> NOV 17 1910
PASSED	
APPROVED	







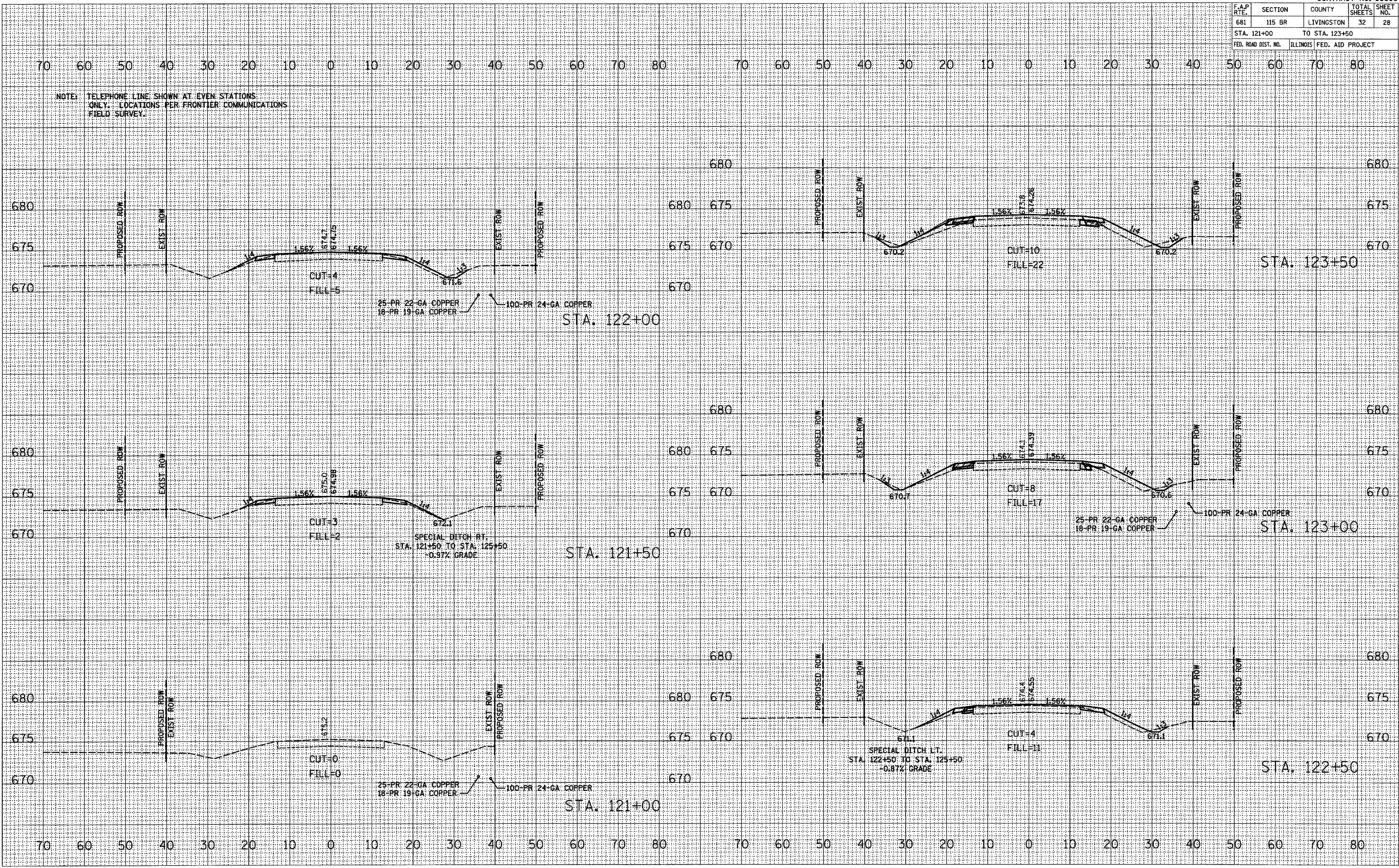


F.A.P. RTE.	SECTION	COUNTY	TOTAL SHEETS	SHEET NO.
681	115 BR	LIVINGSTON	32	28
STA. 121+00 TO STA. 123+50			ILLINOIS FED. AID PROJECT	

NOTE: TELEPHONE LINE SHOWN AT EVEN STATIONS ONLY. LOCATIONS PER FRONTIER COMMUNICATIONS FIELD SURVEY.

DATE	
BY	
FINAL SURVEY	
PLOTTED	
NOTE BOOK	
AREAS CHECKED	

DATE	
BY	
ORIGINAL SURVEY	
PLOTTED	
NOTE BOOK	
AREAS CHECKED	



PLOT DATE: 08/28/2007  
 FILE NAME: H:\A266\A1\Files  
 PLOT SCALE: 1/8"=1'-0"  
 REFERENCE: \*REF\*

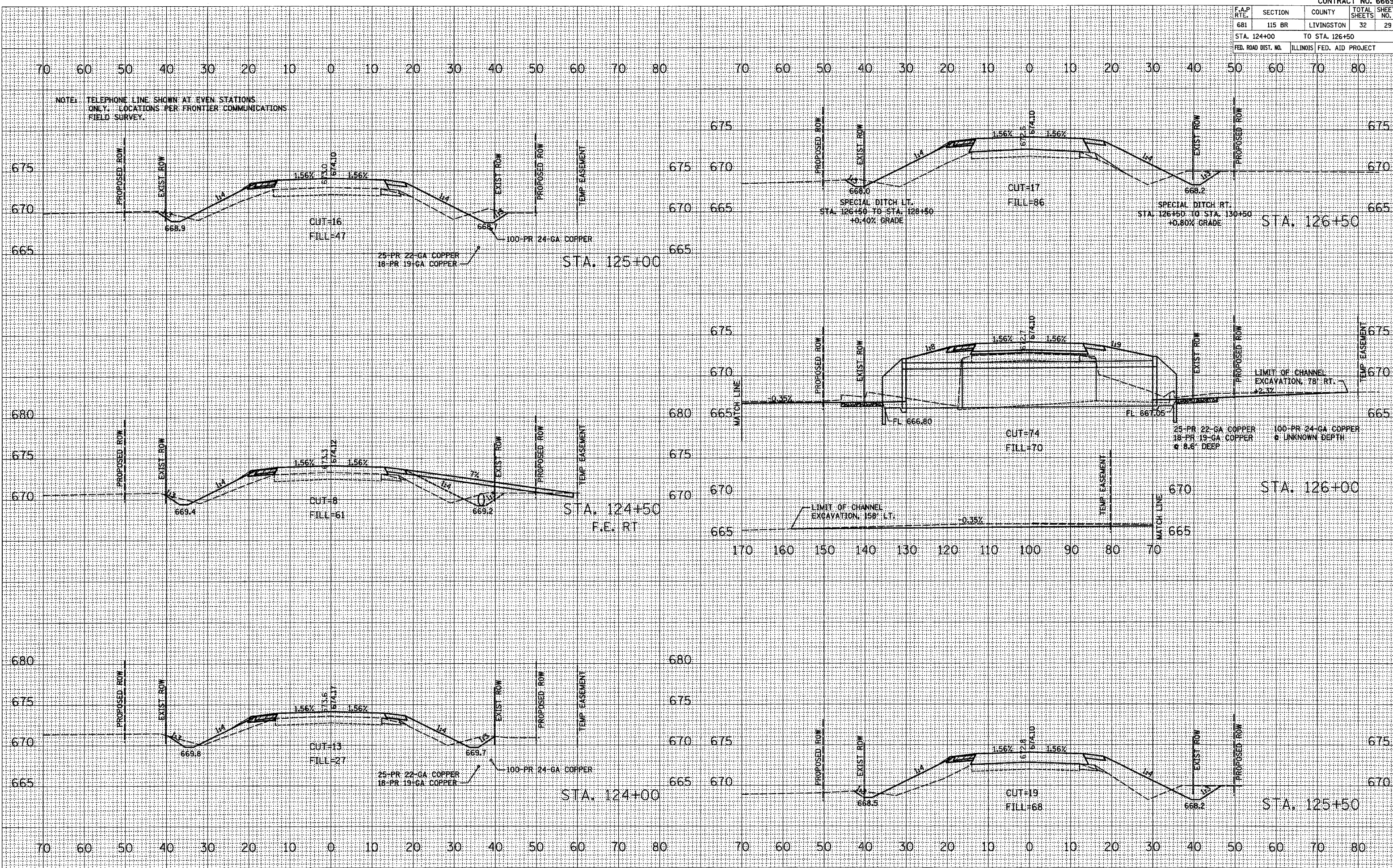


F.A.P. RTE.	SECTION	COUNTY	TOTAL SHEETS	SHEET NO.
681	115 BR	LIVINGSTON	32	29
STA. 124+00		TO STA. 126+50		
FED. ROAD DIST. NO.		ILLINOIS FED. AID PROJECT		

DATE	
BY	
FINAL SURVEY	
PLOTTED	
NOTE BOOK	
AREAS CHECKED	
NO.	

DATE	
BY	
ORIGINAL SURVEY	
PLOTTED	
NOTE BOOK	
AREAS CHECKED	
NO.	

NOTE: TELEPHONE LINE SHOWN AT EVEN STATIONS ONLY. LOCATIONS PER FRONTIER COMMUNICATIONS FIELD SURVEY.



PLOT DATE = 06/28/2007  
 FILE NAME = H:\V\66690\A\Fig Copied from M...  
 PLOT SCALE = 1/8"=1'-0" / IN.  
 REFERENCE = REF#

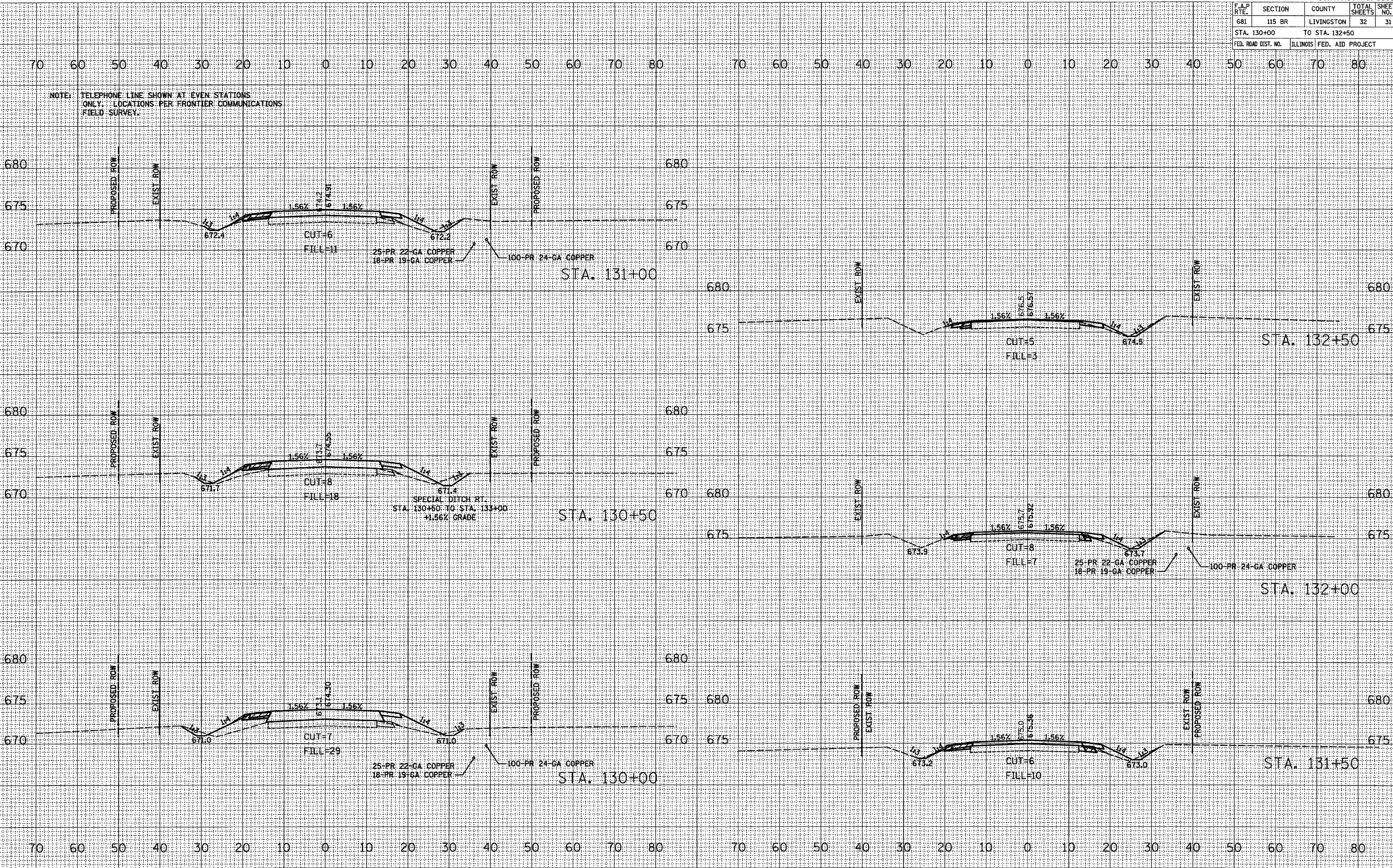






F.A.P. RTE.	SECTION	COUNTY	TOTAL SHEETS	SHEET NO.
681	115 BR	LIVINGSTON	32	31
STA. 130+00 TO STA. 132+50				
FED. ROAD DIST. NO. ILLINOIS FED. AID PROJECT				

NOTE: TELEPHONE LINE SHOWN AT EVEN STATIONS ONLY. LOCATIONS PER FRONTIER COMMUNICATIONS FIELD SURVEY.



BY	DATE
SURVEYED	
PLOTTED	
NOTE BOOK	
AREAS CHECKED	

BY	DATE
ORIGINAL SURVEY	
PLOTTED	
AREAS CHECKED	

FILE NAME = H:\V\66690\Files Copied from M...  
PLOT SCALE = 1/8"=1'-0" / IN.  
REFERENCE = REF#

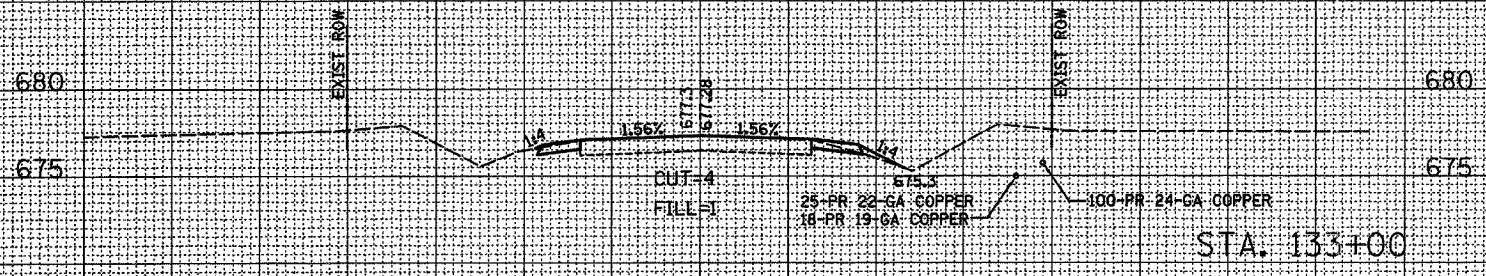
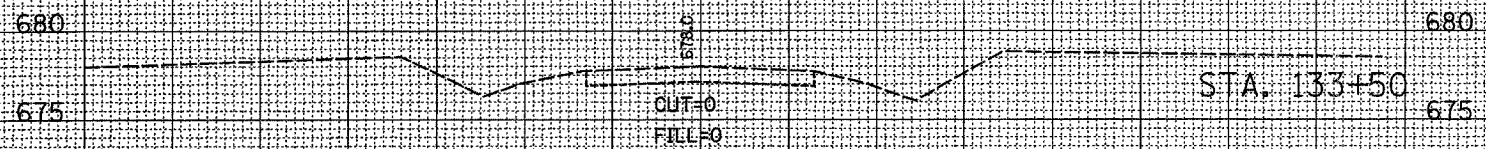
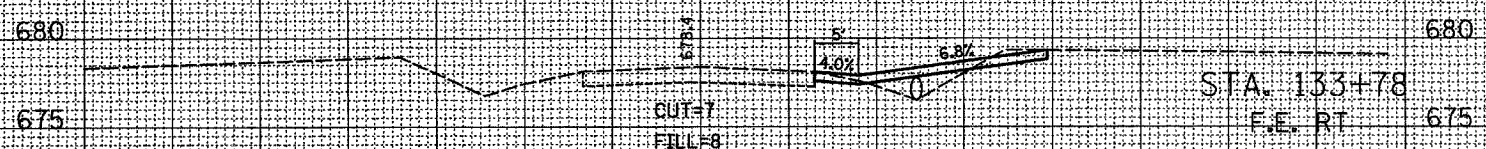


F.A.P. RTE.	SECTION	COUNTY	TOTAL SHEETS	SHEET NO.
681	115 BR	LIVINGSTON	32	32
STA. 133+00		TO STA. 133+78		
FED. ROAD DIST. NO.		ILLINOIS FED. AID PROJECT		

70 60 50 40 30 20 10 0 10 20 30 40 50 60 70 80

NOTE: TELEPHONE LINE SHOWN AT EVEN STATIONS ONLY. LOCATIONS PER FRONTIER COMMUNICATIONS FIELD SURVEY.

FINAL SURVEY	SURVEYED	DATE
NOTE BOOK	PLOTTED	BY
NO.	TEMP. DATE	
	AREAS CHECKED	
	NO.	



70 60 50 40 30 20 10 0 10 20 30 40 50 60 70 80

ORIGINAL SURVEY	SURVEYED	DATE
DATE	PLOTTED	BY
NO.	TEMP. DATE	
	AREAS CHECKED	
	NO.	

PLOT DATE = 06/20/2007  
 FILE NAME = H:\P\2007\115 BR Doped from M  
 REFERENCE = MREF