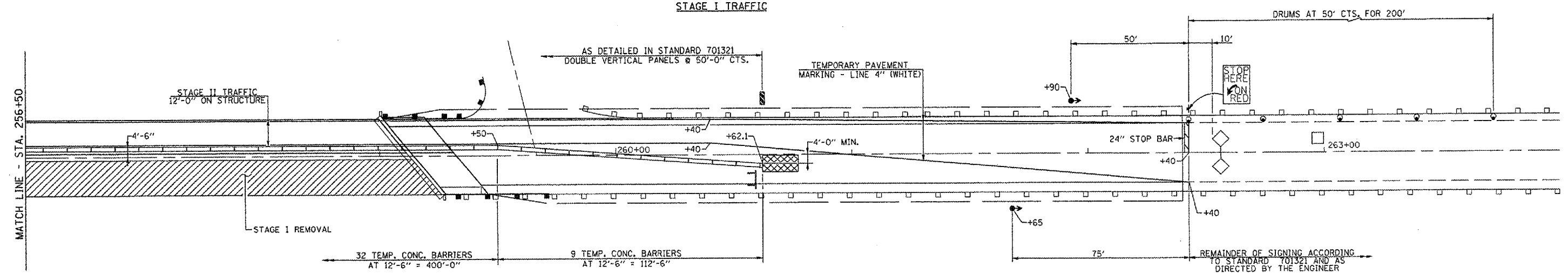
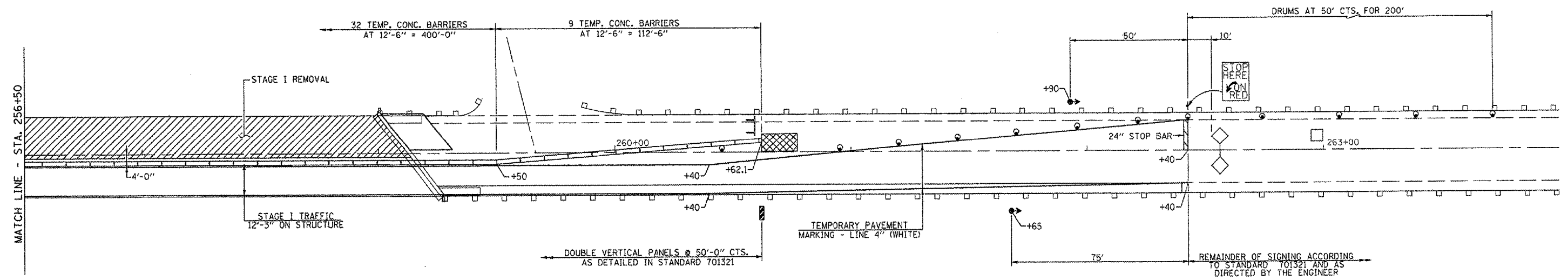


CONTRACT NO. 68468				
F.A.P. RTE.	SECTION	COUNTY	TOTAL SHEETS	SHEET NO.
317	(18B)1	FULTON	50	10
STA. 252+75		TO STA. 262+40		
FED. ROAD DIST. NO. 1 ILLINOIS FED. AID PROJECT				



SCHEDULE  
TEMPORARY PAVEMENT MARKING &  
WORK ZONE PAVEMENT MARKING REMOVAL

LOCATION STATION TO STATION	TEMP. PAV'T. MARKING LINE - 4" (FOOT)	TEMP. PAV'T. MARKING LINE - 24" (FOOT)	WORK ZONE PAVEMENT MARKING REMOVAL (SQ. FT.)
STAGE I			
STA. 252+75 RT.		12	24
STA. 252+75 TO STA. 262+40 RT.	965		319
STA. 252+75 TO STA. 262+40 C	965		319
STA. 262+40 LT.		12	24
STAGE II			
STA. 252+75 TO STA. 262+40 LT.	965		319
STA. 252+75 TO STA. 262+40 C	965		319
TOTAL	3860	24	1324

TRAFFIC CONTROL SCHEDULE

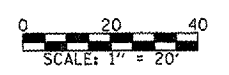
LOCATION STATION TO STATION	TEMP. CONC. BARRIER (FOOT)	RELOCATE TEMP. CONC. BARRIER (FOOT)	IMPACT ATTENUATOR TEMPORARY (EACH)	RELOCATE IMPACT ATTENUATOR (EACH)
STAGE I				
STA. 254+22.9 TO STA. 254+37.9			1	
STA. 254+37.9 TO STA. 260+62.1	625			
STA. 260+62.1 TO STA. 260+77.1			1	
STAGE II				
STA. 254+22.9 TO STA. 254+37.9				1
STA. 254+37.9 TO STA. 260+62.1		625		
STA. 260+62.1 TO STA. 260+77.1				1
TOTAL	625	625	2	2

SYMBOLS

- WORK AREA
- SIGN
- TYPE III BARRICADE
- DRUM WITH STEADY BURNING LIGHT
- TRAFFIC SIGNAL
- TEMPORARY RUMBLE STRIP
- INDUCTION LOOP DETECTOR
- DOUBLE VERTICAL PANEL
- TYPE C BIDIRECTIONAL REFLECTOR
- TEMPORARY CONCRETE BARRIER
- IMPACT ATTENUATOR
- STEADY BURNING LIGHTS AND DOUBLE VERTICAL PANELS

NOTE: WORK THIS SHEET WITH SHEETS 7, 8 & 9.

STAGE CONSTRUCTION TRAFFIC DETAILS  
US ROUTE 24 OVER OTTER CREEK  
F.A.P. RTE. 317 - SECTION (18B)1  
FULTON COUNTY  
STA. 257+54.33  
S.N. 029-2005



PLOT DATE = 04/25/05  
FILE NAME = 0418B1.DWG  
MODEL NAME = 0418B1.DWG