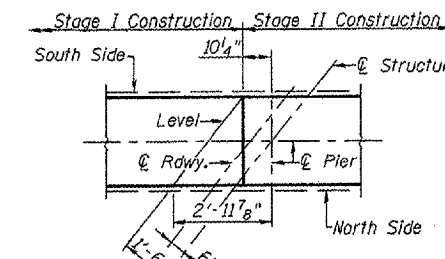
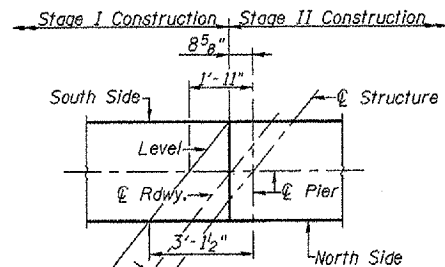


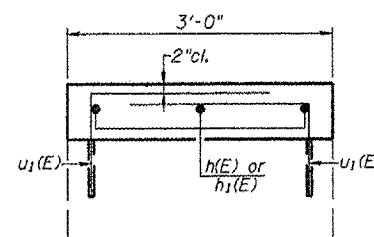
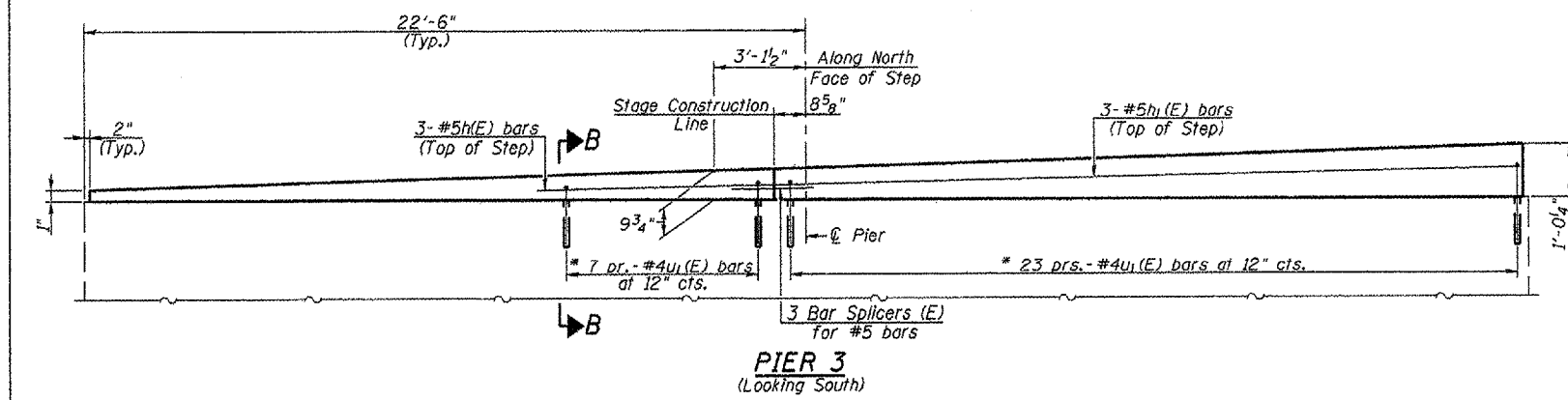
SECTION A-A



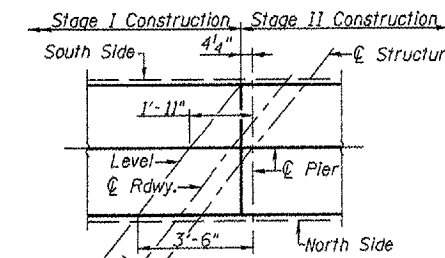
PARTIAL PLAN (Pier 1)



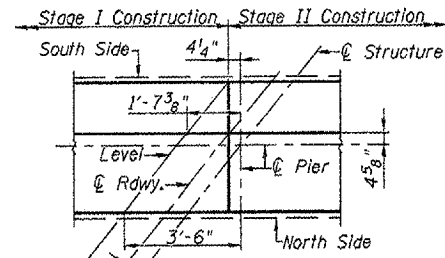
PARTIAL PLAN (Pier 3)



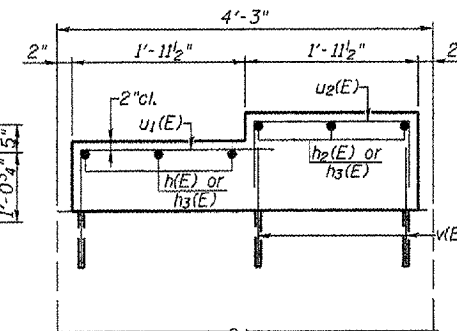
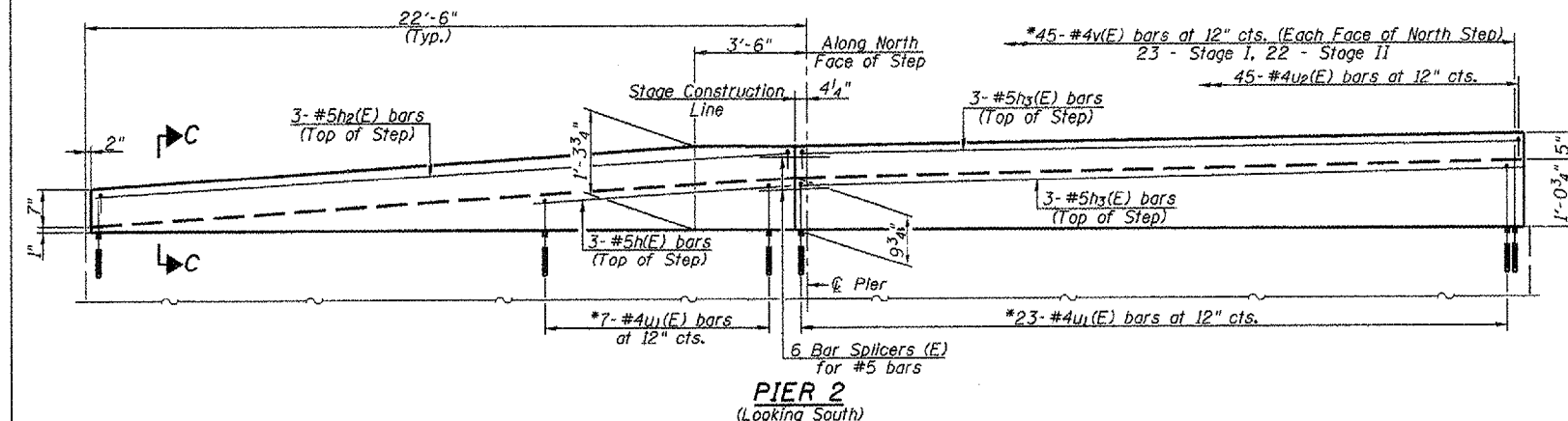
SECTION B-B



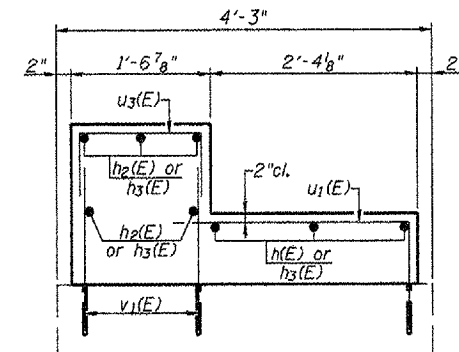
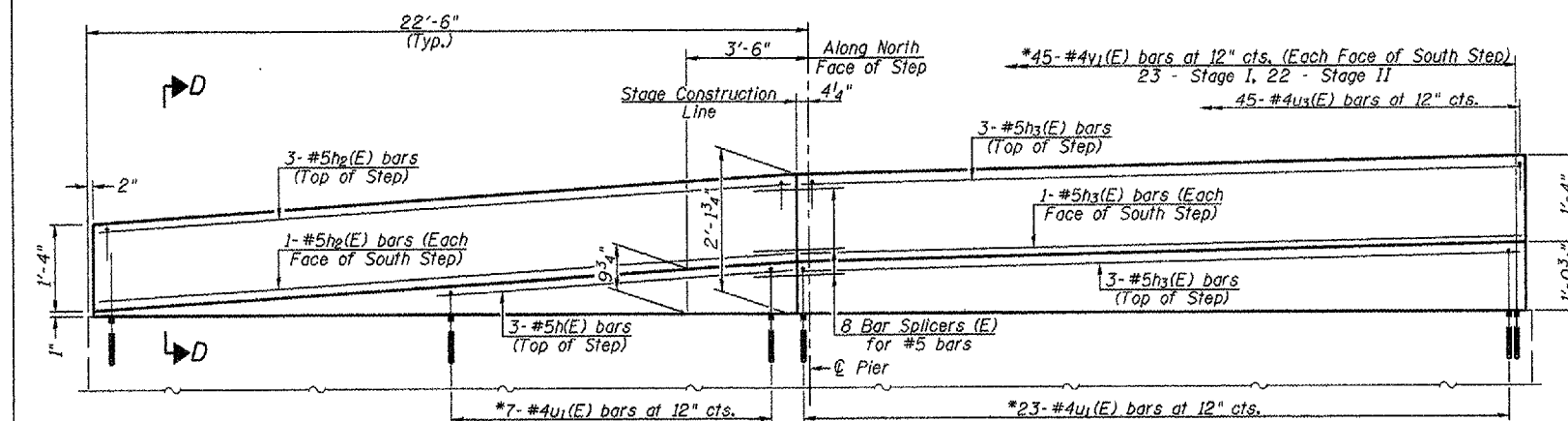
PARTIAL PLAN (Pier 2)



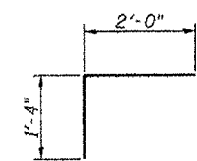
PARTIAL PLAN (Pier 4)



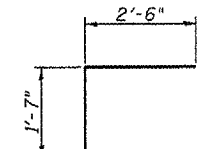
SECTION C-C



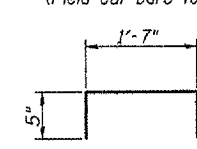
SECTION D-D



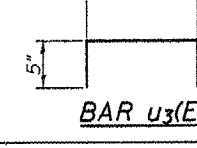
BAR u(E)  
(Field cut bars to fit)



BAR u1(E)  
(Field cut bars to fit)



BAR u2(E)



BAR u3(E)

Notes: Field cut v(E) & v (E) bars to fit.  
 Bridge seat dimensions are taken from the existing plan and assumed to be accurate. Dimensions shall be field verified prior to removal of existing concrete.  
 Space reinforcement in cap to miss reinforcement.

**BILL OF MATERIAL**

Bar	No.	Size	Length	Shape
h(E)	12	#5	6'-3"	—
h1(E)	6	#5	22'-8"	—
h2(E)	8	#5	21'-8"	—
h3(E)	14	#5	22'-4"	—
u(E)	60	#4	3'-4"	□
u1(E)	120	#4	4'-1"	□
u2(E)	45	#4	2'-5"	□
u3(E)	45	#4	2'-0"	□
v(E)	90	#4	2'-0"	—
v1(E)	90	#4	2'-11"	—
Reinforcement Bars, Epoxy Coated			Pound	1620
Concrete Structures			Cu. Yd.	20.9
Bar Splicers, Epoxy Coated			Each	20

**SUBSTRUCTURE DETAILS**  
 F.A.P. ROUTE 317 (U.S. 24)  
 OVER OTTER CREEK  
 SECTION (18B)1  
 FULTON COUNTY  
 STATION 257+54.33  
 STRUCTURE NO. 029-005