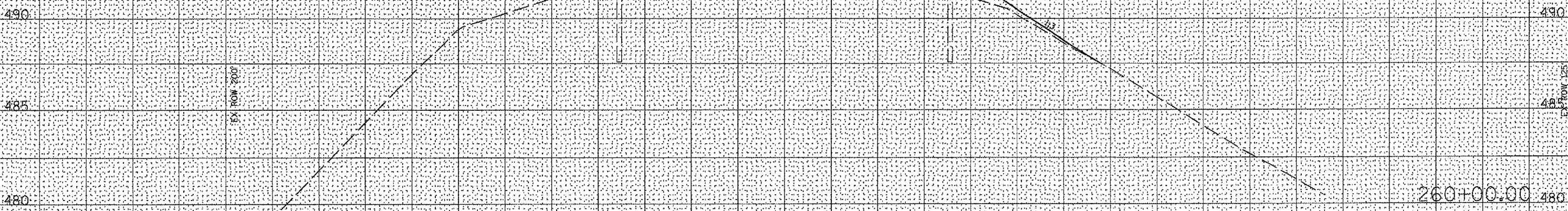
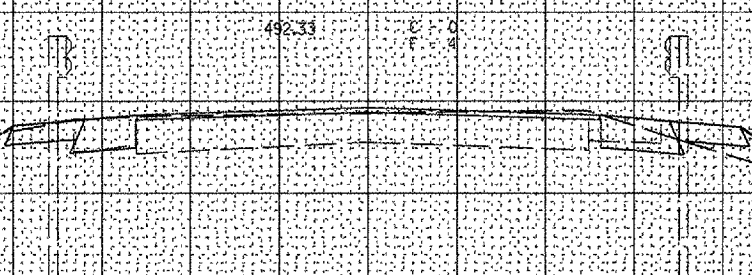


F.A.P. RTE.	SECTION	COUNTY	TOTAL SHEETS	SHEET NO.
317	(188)	FULTON	50	48
STA. 259+67.00		TO STA. 260+00.00		
FED. ROAD DIST. NO.		ILLINOIS FED. AID PROJECT		

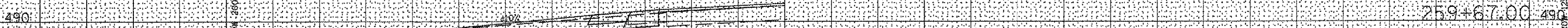
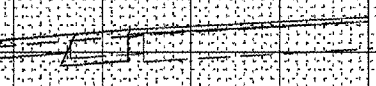
80 75 70 65 60 55 50 45 40 35 30 25 20 15 10 5 0 5 10 15 20 25 30 35 40 45 50 55 60 65 70 75 80

REMOVE AND RE-ERECT STEEL PLATE BEAM GUARDRAIL - STA. 260+11 TO STA. 262+36 LT.



REMOVE AND RE-ERECT STEEL PLATE BEAM GUARDRAIL - STA. 259+68 TO STA. 262+30.3 RT.

FIELD ENTRANCE LT.



CROSS SECTIONS
 US ROUTE 24 OVER OTTER CREEK
 F.A.P. ROUTE 317 - SECTION (188)
 FULTON COUNTY
 STA. 257+54.33
 S.N. 029-2005

80 75 70 65 60 55 50 45 40 35 30 25 20 15 10 5 0 5 10 15 20 25 30 35 40 45 50 55 60 65 70 75 80

DATE	
BY	
FINN SURVEYED	
PLOTTED	
NOTE BOOK	
AREAS CHECKED	
NO.	

DATE	
BY	
ORIGINAL SURVEYED	
PLOTTED	
NOTE BOOK	
AREAS CHECKED	
NO.	

PLOT DATE: *05/05/05
 FILE NAME: *S11E1A
 PLOT SCALE: *1/4"=1'-0"
 USER NAME: *MSURER